

# SUPERGLAZE™ SiBR

Silicon Bronze wire for welding, plasma, laser and MIG brazing

## Consistent Chemistry

- Strict quality control from mill to manufacturing
- Controlled chemistry to improve puddle fluidity
- Q2 certificates available online

## Cleanest & Smoothest Wire in its Class

- Notably clean and smooth wire surface compared to competitors
- A clean and smooth surface improves:
  - Deposit appearance leading to fewer touch ups
  - Feedability, resulting in higher productivity

## CONFORMANCES

**AWS A5.7**

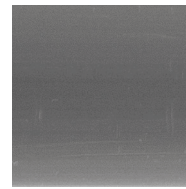
ERCuSi-A

**ISO 24373**

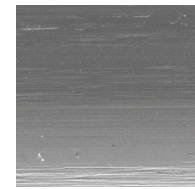
S Cu 6560 [CuSi3Mn]

## SURFACE AND CLEANLINESS OF WIRE

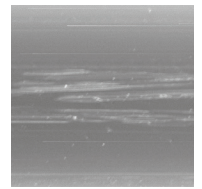
100x SEM Magnification - 0.035 in (0.9 mm)



SUPERGLAZE™ SiBR



COMPETITOR 1



COMPETITOR 2

## Superior Mechanical Properties

- Values of ultimate tensile strength, yield strength and elongation are above average versus the competition:

	Lincoln Electric Average	Market Average
UTS	↑ 374.04 MPa (54.25 ksi)	↓ 350 MPa (50.7 ksi)
0.2% Y/S	↑ 182.71 MPa (26.5 ksi)	↓ 130 MPa (18.8 ksi)
Elongation	↑ 58%	↓ 40%

- The greater elongation percentage indicates higher ductility in the weld metal



## GEM-PAK® Premium Packaging Solution

- A reliable and robust wire bulk package that is tangle-free guaranteed
- Fast and easy set-up needing no external payoff devices
- Controlled feed system using gems unlike any other wire bulk packaging system in the industry



## DIAMETERS / PACKAGING

Diameter in (mm)	33 lb (15 kg) Plastic Spool	500 lb (227 kg) Gem-Pak® Box
0.035 (0.9)	ED036805	ED036802
0.040 (1.0)	ED036806	ED036803
0.045 (1.1)	ED036807	ED036804

For additional wire diameters, grades and packaging, contact Lincoln Electric.

### TEST RESULTS

Test results for mechanical properties, deposit or electrode composition and diffusible hydrogen levels were obtained from a weld produced and tested according to prescribed standards, and should not be assumed to be the expected results in a particular application or weldment. Actual results will vary depending on many factors, including, but not limited to, weld procedure, plate chemistry and temperature, weldment design and fabrication methods. Users are cautioned to confirm by qualification testing, or other appropriate means, the suitability of any welding consumable and procedure before use in the intended application.

### CUSTOMER ASSISTANCE POLICY

The Lincoln Electric Company is manufacturing and selling high quality welding equipment, consumables, and cutting equipment. Our challenge is to meet the needs of our customers and to exceed their expectations. On occasion, purchasers may ask Lincoln Electric for information or advice about their use of our products. Our employees respond to inquiries to the best of their ability based on information provided to them by the customers and the knowledge they may have concerning the application. Our employees, however, are not in a position to verify the information provided or to evaluate the engineering requirements for the particular weldment. Accordingly, Lincoln Electric does not warrant or guarantee or assume any liability with respect to such information or advice. Moreover, the provision of such information or advice does not create, expand, or alter any warranty on our products. Any express or implied warranty that might arise from the information or advice, including any implied warranty of merchantability or any warranty of fitness for any customers' particular purpose is specifically disclaimed.

Lincoln Electric is a responsive manufacturer, but the selection and use of specific products sold by Lincoln Electric is solely within the control of, and remains the sole responsibility of the customer. Many variables beyond the control of Lincoln Electric affect the results obtained in applying these types of fabrication methods and service requirements.

Subject to Change – This information is accurate to the best of our knowledge at the time of printing. Please refer to [www.lincolnelectric.com](http://www.lincolnelectric.com) for any updated information.