

# FANUC ROBOT R-30iB Mini Plus

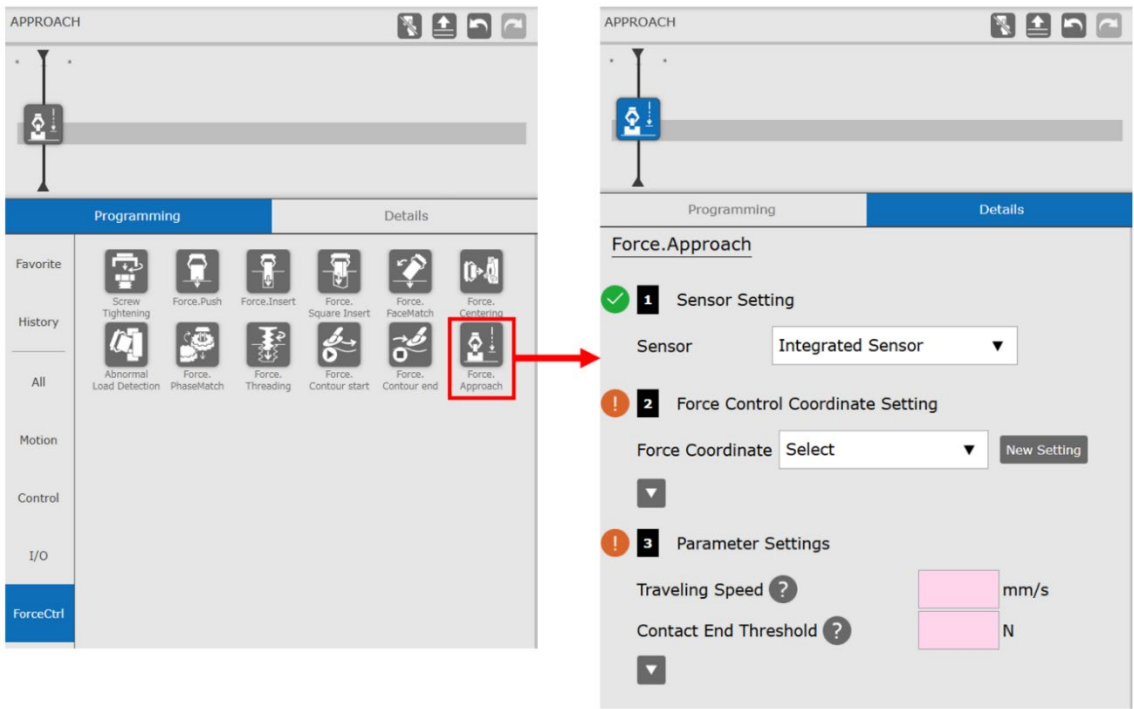
## Software Update Contents

### 1 Change Summary

Updated the software version of R-30iB Mini Plus series 7DF5 from 70 to 71 (from V9.40P/70 to V9.40P/71).

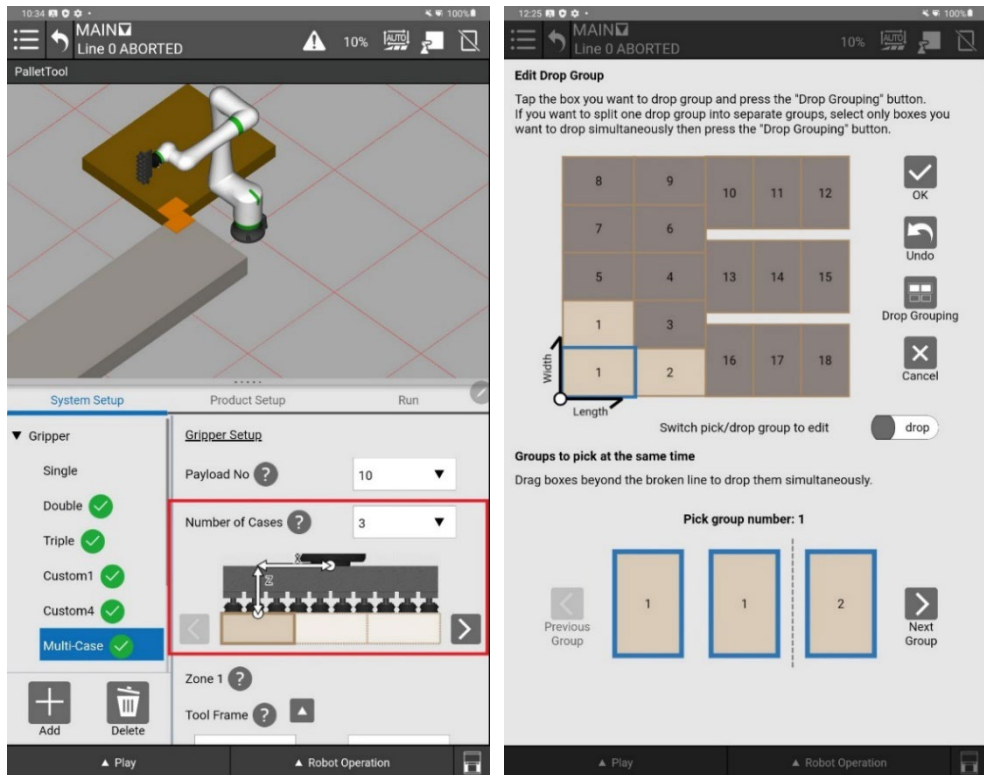
### 2 Reasons for Change

- Added the Force.Approach icon. This function is used to reduce force overshoot when contact occurs. When contact occurs with the Force.Approach icon set, contact is detected immediately and the robot stops quickly, minimizing force overshoot.



Title	FANUC ROBOT R-30iB Mini Plus Software Update Contents	Ed 71	Draw A-97606-07164EN	Sheet 1/5
		Date 2025 02.26	FANUC CORPORATION	

- Added the Multi-case gripper user interface to the PalletTool 3 option (R938), which enables picking/placing multiple boxes at a time. The Multi-case gripper function provides a user interface for configuring pick/place groups.



- Added a new UI to enable Palletizing mode in the PalletTool 3 option (R938). This function lets you run a palletizing cycle with Palletizing mode enabled.



- Changed internal processes to improve reliability.

Title	FANUC ROBOT R-30iB Mini Plus Software Update Contents	Ed 71	Draw A-97606-07164EN	Sheet 2/5
		Date 2025 02.26	FANUC CORPORATION	

【Version history】

Ed	Date	Description
01	2020/08/20	The first edition registration
02	2020/09/24	Updated to 7DF5/03 (V9.40P/03)
03	2020/09/28	Updated to 7DF5/04 (V9.40P/04)
04	2020/10/30	Updated to 7DF5/05 (V9.40P/05)
05	2020/11/26	Updated to 7DF5/06 (V9.40P/06)
06	2020/12/10	Updated to 7DF5/07 (V9.40P/07)
07	2020/12/21	Updated to 7DF5/08 (V9.40P/08)
08	2021/01/26	Updated to 7DF5/09 (V9.40P/09)
09	2021/02/25	Updated to 7DF5/10 (V9.40P/10)
10	2021/03/09	Updated to 7DF5/11 (V9.40P/11)
11	2021/04/07	Updated to 7DF5/12 (V9.40P/12)
12	2021/05/07	Updated to 7DF5/13 (V9.40P/13)
13	2021/05/30	Adjusted this document edition to the software version
14	2021/05/31	Updated to 7DF5/14 (V9.40P/14)
15	2021/06/28	Updated to 7DF5/15 (V9.40P/15)
16	2021/07/30	Undisclosed 7DF5/16 (V9.40P/16)
17	2021/07/30	Updated to 7DF5/17 (V9.40P/17)
18	2021/09/03	Updated to 7DF5/18 (V9.40P/18)
19	2021/09/29	Updated to 7DF5/19 (V9.40P/19)
20	2021/11/05	Updated to 7DF5/20 (V9.40P/20)
21	2021/12/01	Undisclosed 7DF5/21 (V9.40P/21)
22	2021/12/07	Updated to 7DF5/22 (V9.40P/22)
23	2022/01/05	Undisclosed 7DF5/23 (V9.40P/23)
24	2022/01/28	Undisclosed 7DF5/24 (V9.40P/24)
25	2022/03/23	Undisclosed 7DF5/25 (V9.40P/25)
26	2022/03/23	Updated to 7DF5/26 (V9.40P/26)
27	2022/04/13	Undisclosed 7DF5/27 (V9.40P/27)
28	2022/04/13	Undisclosed 7DF5/28 (V9.40P/28)
29	2022/04/28	Updated to 7DF5/29 (V9.40P/29)
30	2022/06/03	Undisclosed to 7DF5/30 (V9.40P/30)
31	2022/06/03	Updated to 7DF5/31 (V9.40P/31)
32	2022/07/12	Undisclosed to 7DF5/32 (V9.40P/32)
33	2022/07/12	Updated to 7DF5/33 (V9.40P/33)
34	2022/08/04	Updated to 7DF5/34 (V9.40P/34)

Title	FANUC ROBOT R-30iB Mini Plus Software Update Contents	Ed 71	Draw	A-97606-07164EN	
		Date 2025 02.26	FANUC CORPORATION		Sheet 3/5

Ed	Date	Description		
35	2022/09/02	Updated to 7DF5/35 (V9.40P/35)		
36	2022/09/22	Updated to 7DF5/36 (V9.40P/36)		
37	2022/10/21	Undisclosed to 7DF5/37 (V9.40P/37)		
38	2022/10/21	Updated to 7DF5/38 (V9.40P/38)		
39	2023/01/16	Updated to 7DF5/39 (V9.40P/39)		
40	2023/01/17	Updated to 7DF5/40 (V9.40P/40)		
41	2023/02/01	Updated to 7DF5/41 (V9.40P/41)		
42	2023/03/09	Updated to 7DF5/42 (V9.40P/42)		
43	2023/04/05	Updated to 7DF5/43 (V9.40P/43)		
44	2023/05/09	Updated to 7DF5/44 (V9.40P/44)		
45	2023/06/08	Updated to 7DF5/45 (V9.40P/45)		
46	2023/07/06	Undisclosed to 7DF5/46 (V9.40P/46)		
47	2023/07/06	Updated to 7DF5/47 (V9.40P/47)		
48	2023/08/03	Updated to 7DF5/48 (V9.40P/48)		
49	2023/09/11	Undisclosed to 7DF5/49 (V9.40P/49)		
50	2023/09/11	Updated to 7DF5/50 (V9.40P/50)		
51	2023/10/13	Updated to 7DF5/51 (V9.40P/51)		
52	2023/11/14	Updated to 7DF5/52 (V9.40P/52)		
53	2023/12/13	Updated to 7DF5/53 (V9.40P/53)		
54	2024/01/19	Updated to 7DF5/54 (V9.40P/54)		
55	2024/02/16	Undisclosed to 7DF5/55 (V9.40P/55)		
56	2024/02/16	Updated to 7DF5/56 (V9.40P/56)		
57	2024/03/21	Updated to 7DF5/57 (V9.40P/57)		
58	2024/04/15	Updated to 7DF5/58 (V9.40P/58)		
59	2024/05/24	Updated to 7DF5/59 (V9.40P/59)		
60	2024/06/03	Updated to 7DF5/60 (V9.40P/60)		
61	2024/06/21	Updated to 7DF5/61 (V9.40P/61)		
62	2024/08/09	Updated to 7DF5/62 (V9.40P/62)		
63	2024/09/09	Updated to 7DF5/63 (V9.40P/63)		
64	2024/10/11	Updated to 7DF5/64 (V9.40P/64)		
65	2024/10/16	Updated to 7DF5/65 (V9.40P/65)		
66	2024/11/13	Updated to 7DF5/66 (V9.40P/66)		
67	2024/12/16	Undisclosed to 7DF5/67 (V9.40P/67)		
68	2024/12/16	Updated to 7DF5/68 (V9.40P/68)		
69	2025/01/24	Updated to 7DF5/69 (V9.40P/69)		
Title	FANUC ROBOT R-30iB Mini Plus Software Update Contents	Ed 71	Draw	A-97606-07164EN
		Date 2025 02.26		

Ed	Date	Description
70	2025/01/27	Updated to 7DF5/70 (V9.40P/70)
71	2025/02/26	Updated to 7DF5/71 (V9.40P/71)

Title	FANUC ROBOT R-30iB Mini Plus Software Update Contents	Ed 71	Draw	A-97606-07164EN	
		Date 2025 02.26	FANUC CORPORATION		Sheet 5/5