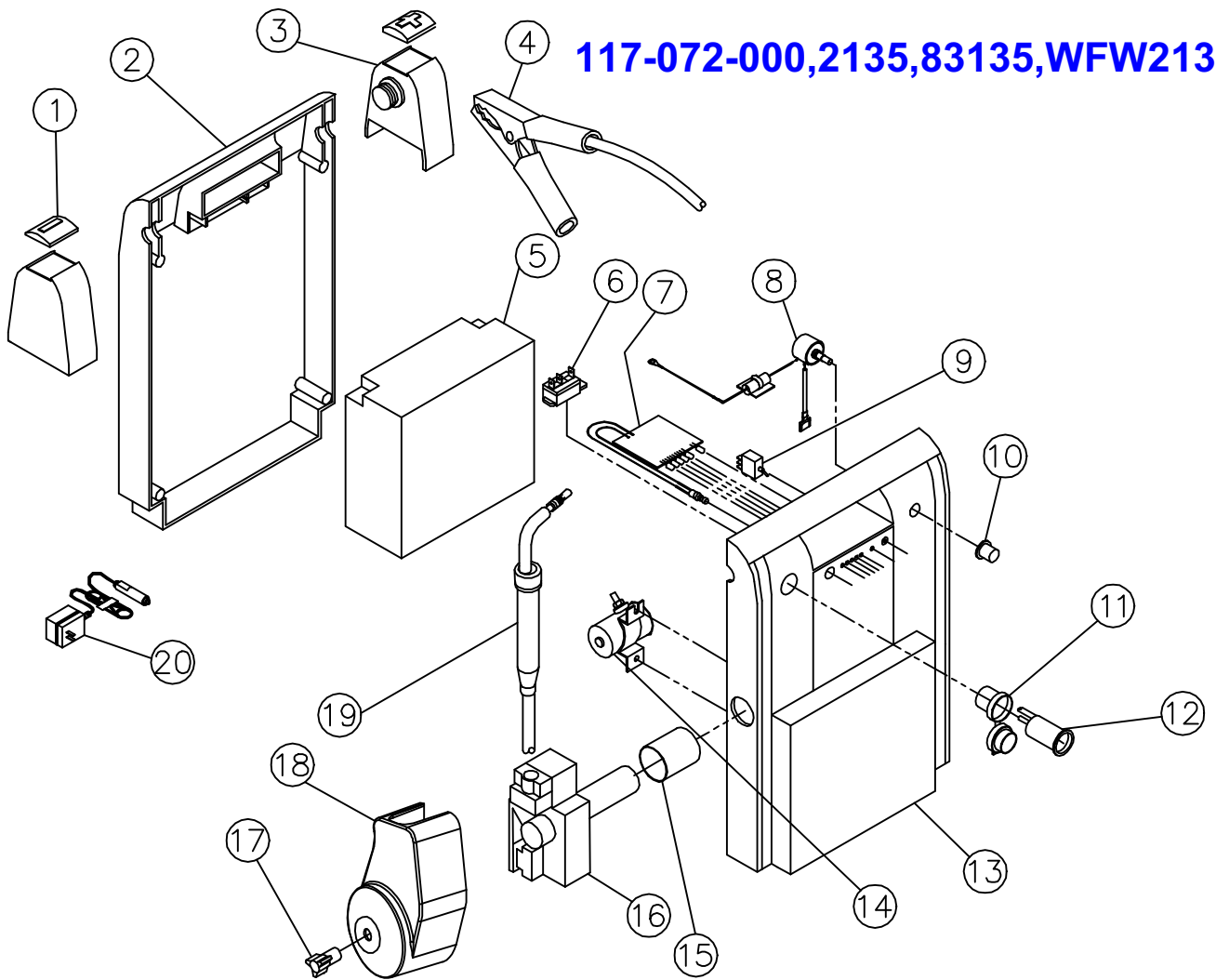


117-072-000,2135,83135,WFW2135

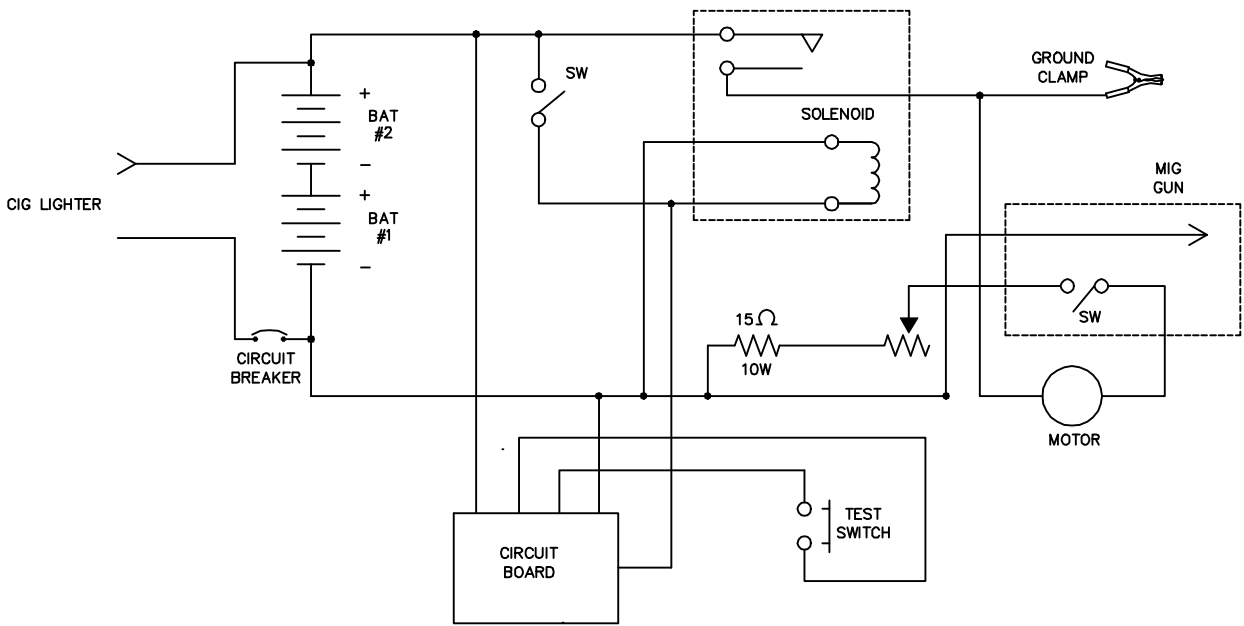


REPLACEMENT PARTS LIST, MODEL 2135, 117-072-000
CORDLESS WIRE FEED WELDER WITH SOLENOID

ITEM	DESCRIPTION	PART NUMBER
1.	NEGATIVE CAP & HOLSTER	312-258-000
2.	CASE, BACK	312-259-000
3.	POSITIVE CAP & HOLSTER	312-257-000
4.	CABLE, GROUND ASSEMBLY	238-491-666
5.	BATTERY, PANASONIC (QTY 2)	ES1217
6.	CIRCUIT BREAKER	246-416-666
7.	PCB ASSEMBLY	880-388-666
8.	REOSTATE/RESISTOR ASSY	880-390-666
9.	TOGGLE SWITCH	246-400-666
10.	KNOB	246-399-666
11.	RETAINER, SNAP-IN W/CAP	312-283-000
12.	CIGARETTE LIGHTER SOCKET	246-417-666
13.	CASE, FRONT	312-256-000
14.	SOLENOID	246-398-666
15.	MOTOR COVER	312-265-000
16.	GEAR MOTOR/DRIVE ASSY	880-382-666
17.	KNOB	246-419-666
18.	MOLDED COVER	312-261-000
19.	GUN ASSY	238-490-666
20.	CHARGER, .75AMP	141-301-000

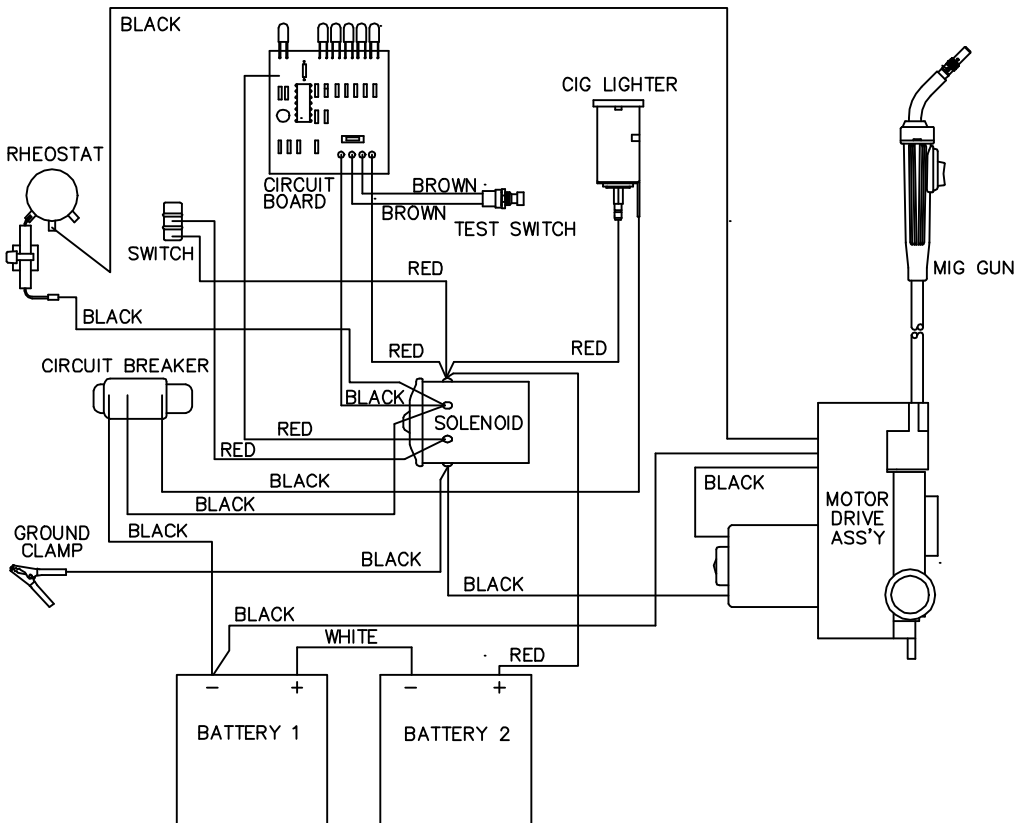
SERVICING SHOULD BE PERFORMED BY QUALIFIED SERVICE PERSONNEL.

FORM NO. 812-654-000
REV A



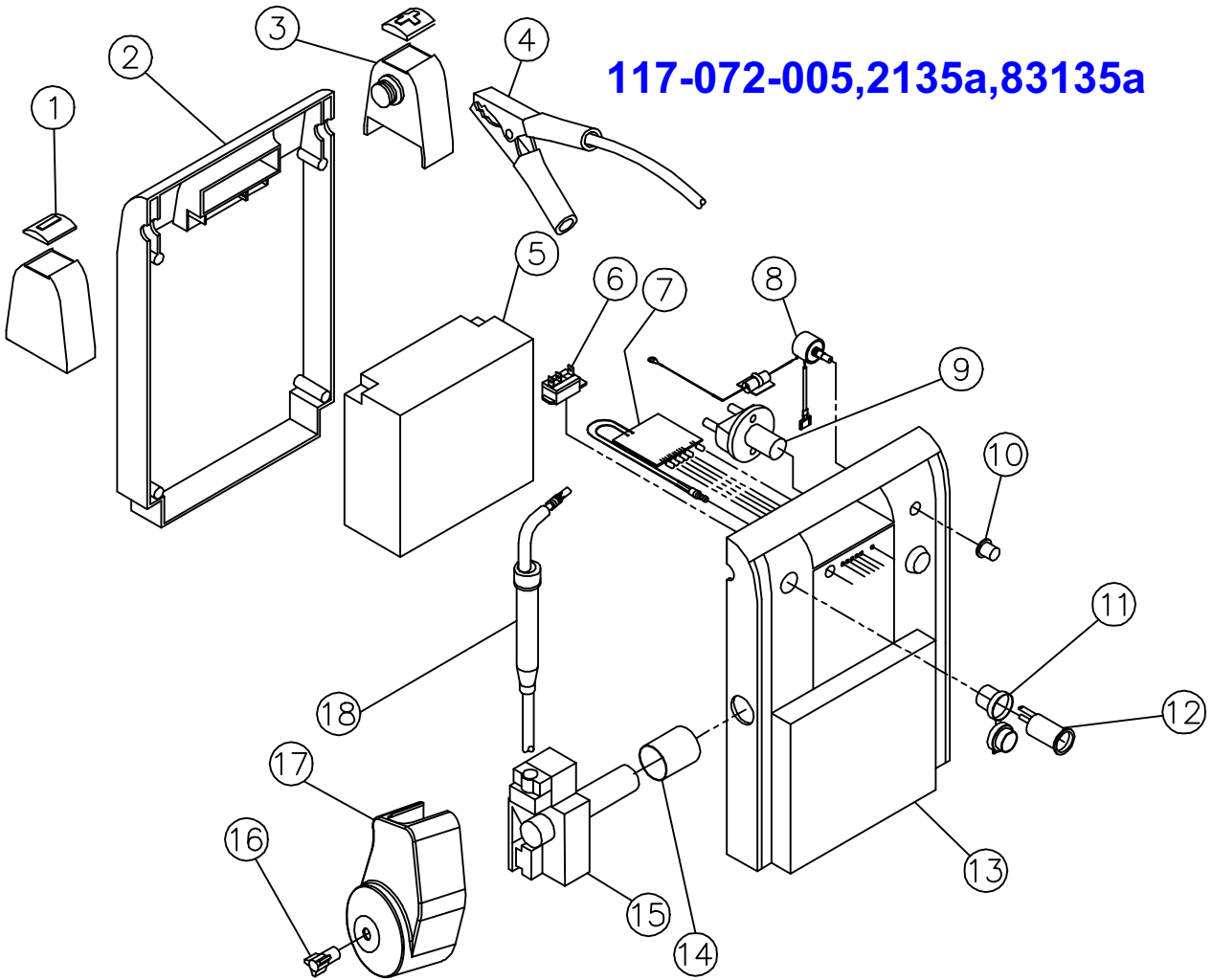
117-072-000,2135,83135,WFW2135

REPLACEMENT PARTS LIST, MODEL 2135, 117-072-000
CORDLESS WIRE FEED WELDER WITH SOLENOID



WIRING DIAGRAM

117-072-005,2135a,83135a

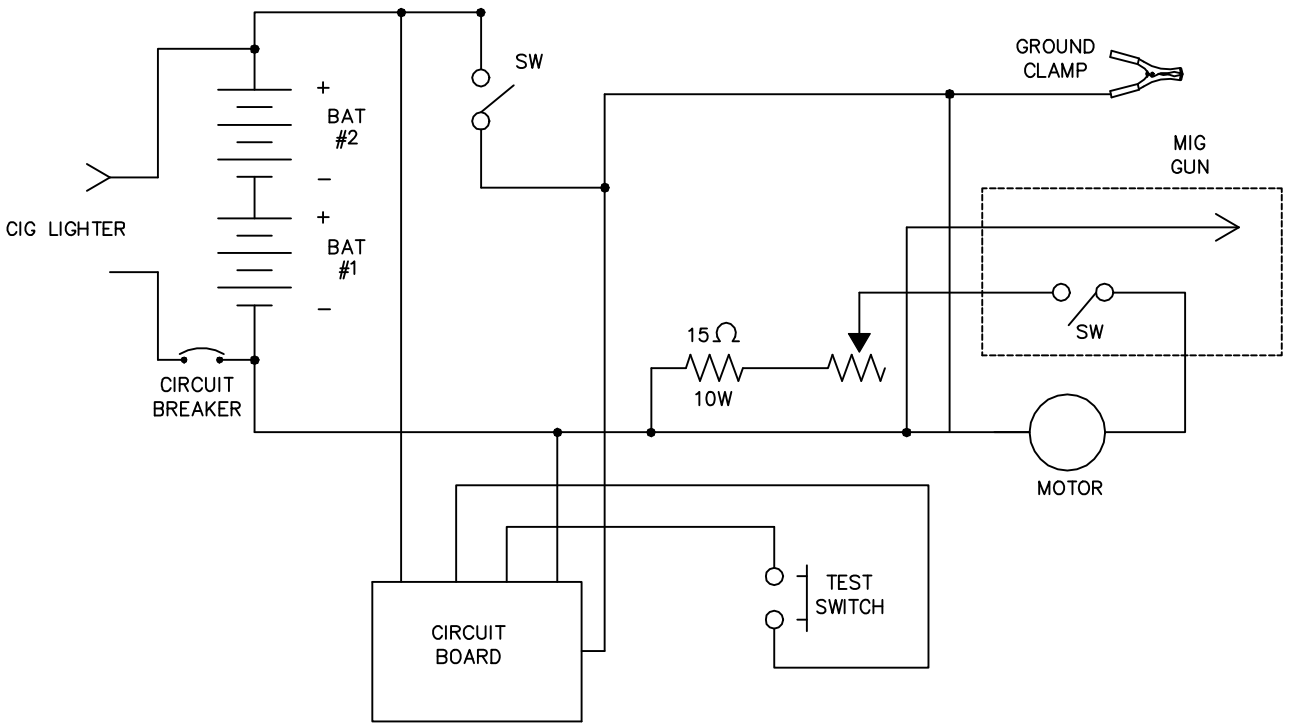


REPLACEMENT PARTS LIST CORDLESS WIRE FEED WELDER

ITEM	DESCRIPTION	PART NUMBER
1.	NEGATIVE CAP & HOLSTER	312-258-000
2.	CASE, BACK	312-259-000
3.	POSITIVE CAP & HOLSTER	312-257-000
4.	CABLE, GROUND ASSEMBLY	238-491-666
5.	BATTERY, PANASONIC (QTY 2)	ES1217
6.	CIRCUIT BREAKER	246-416-666
7.	PCB ASSEMBLY	880-420-666
8.	RHEOSTATE/RESISTOR ASSY	880-390-666
9.	KEY SWITCH	246-425-666
10.	KNOB	246-399-666
11.	RETAINER, SNAP-IN W/CAP	312-283-000
12.	CIGARETTE LIGHTER SOCKET	246-417-666
13.	CASE, FRONT	312-298-000
14.	MOTOR COVER	312-265-000
15.	GEAR MOTOR/DRIVE ASSY	880-382-666
16.	KNOB	246-419-666
17.	MOLDED COVER	312-251-000
18.	GUN ASSY.	238-490-666
19.	CHARGER ONLY (NOT SHOWN)	141-301-000
20.	KEY FOR SWITCH (NOT SHOWN)	312-301-000

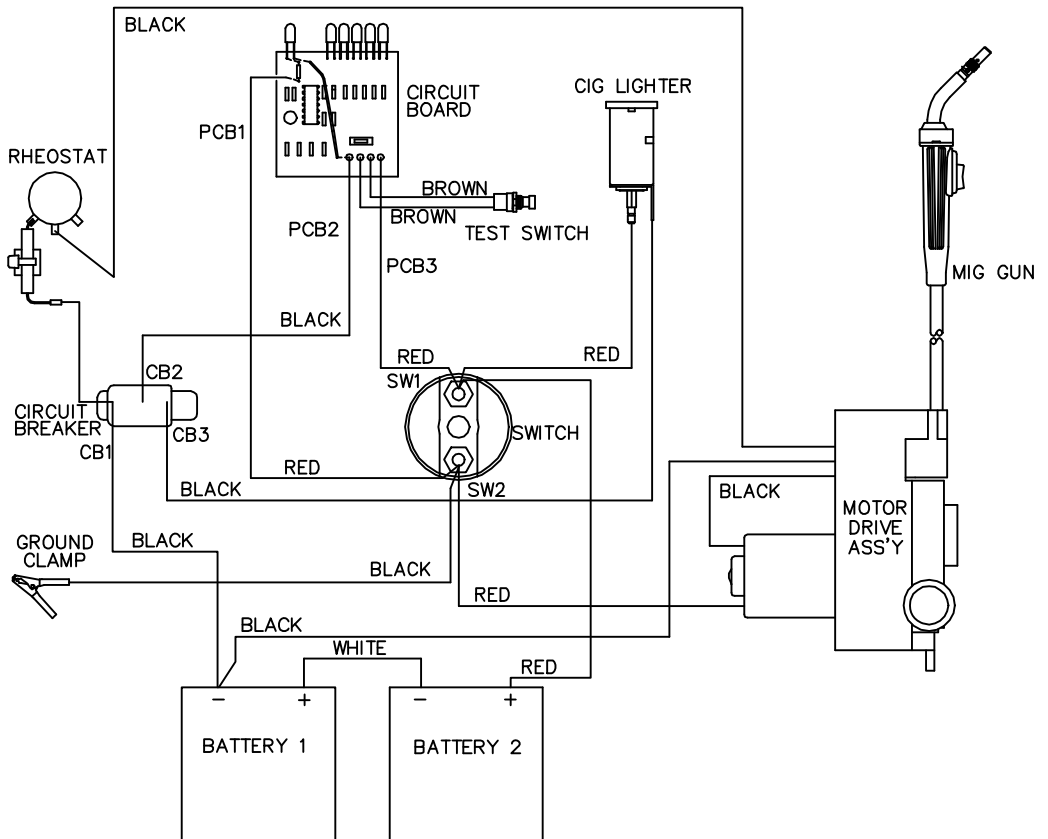
SERVICING SHOULD BE PERFORMED BY QUALIFIED SERVICE PERSONNEL.

FORM NO. 812-677-000

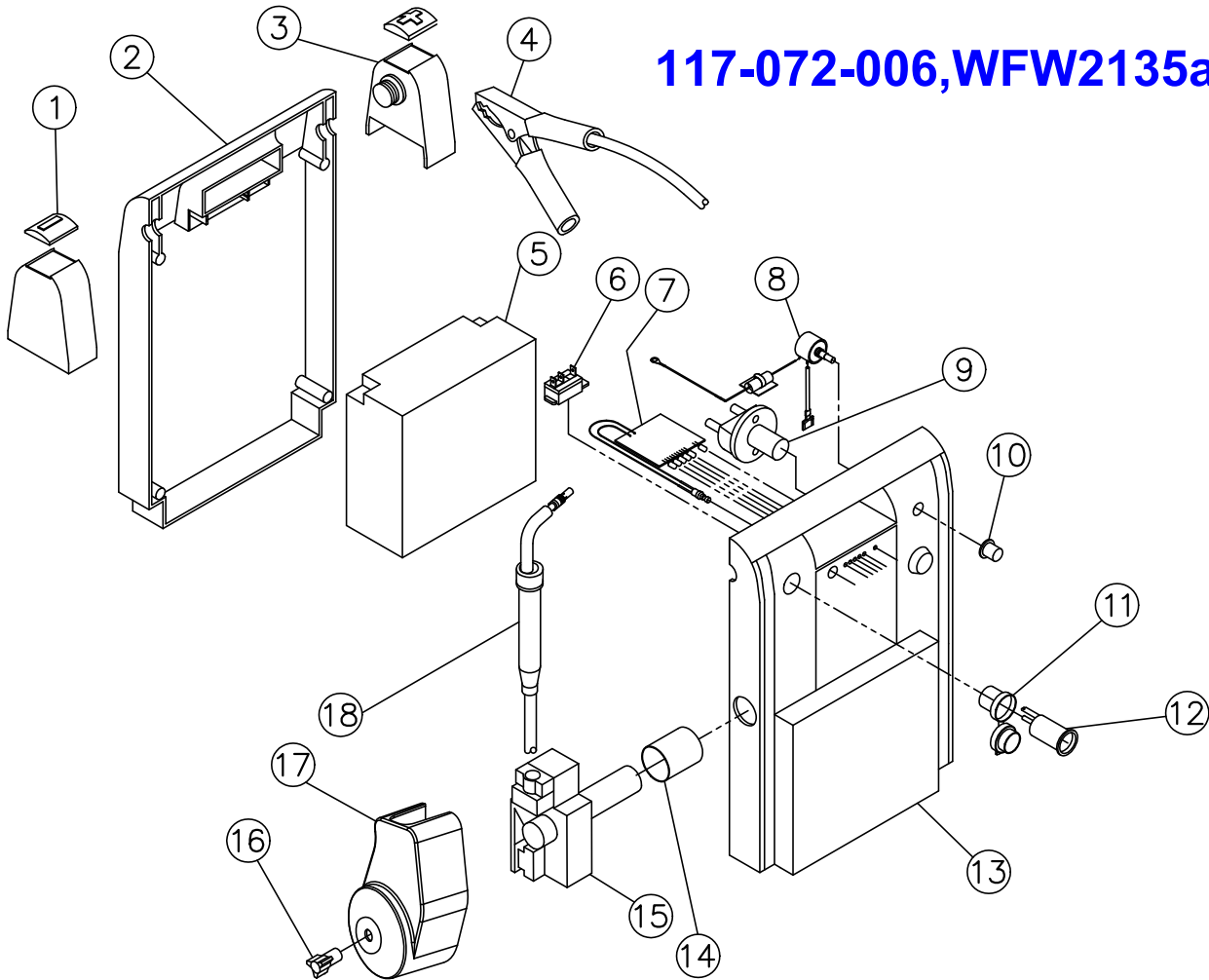


SCHEMATIC DIAGRAM
 CORDLESS WIRE FEED WELDER
 117-072

117-072-005,2135a,83135a



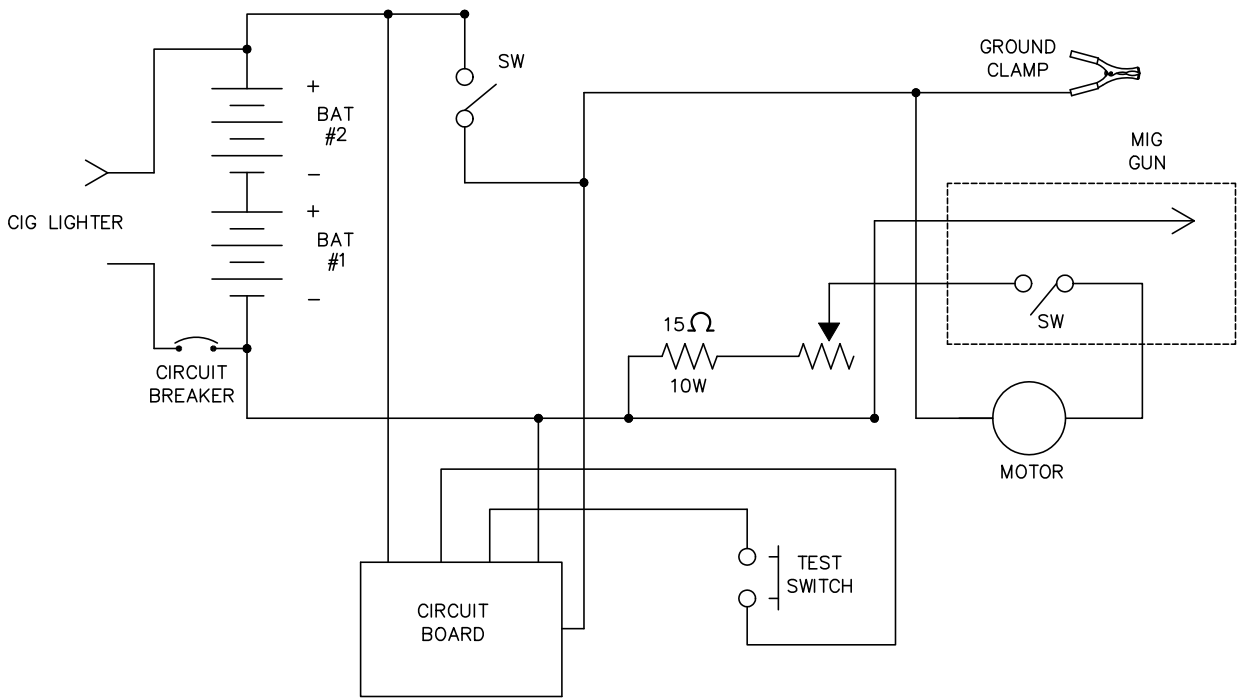
WIRING DIAGRAM



**REPLACEMENT PARTS LIST
CORDLESS WIRE FEED WELDER**

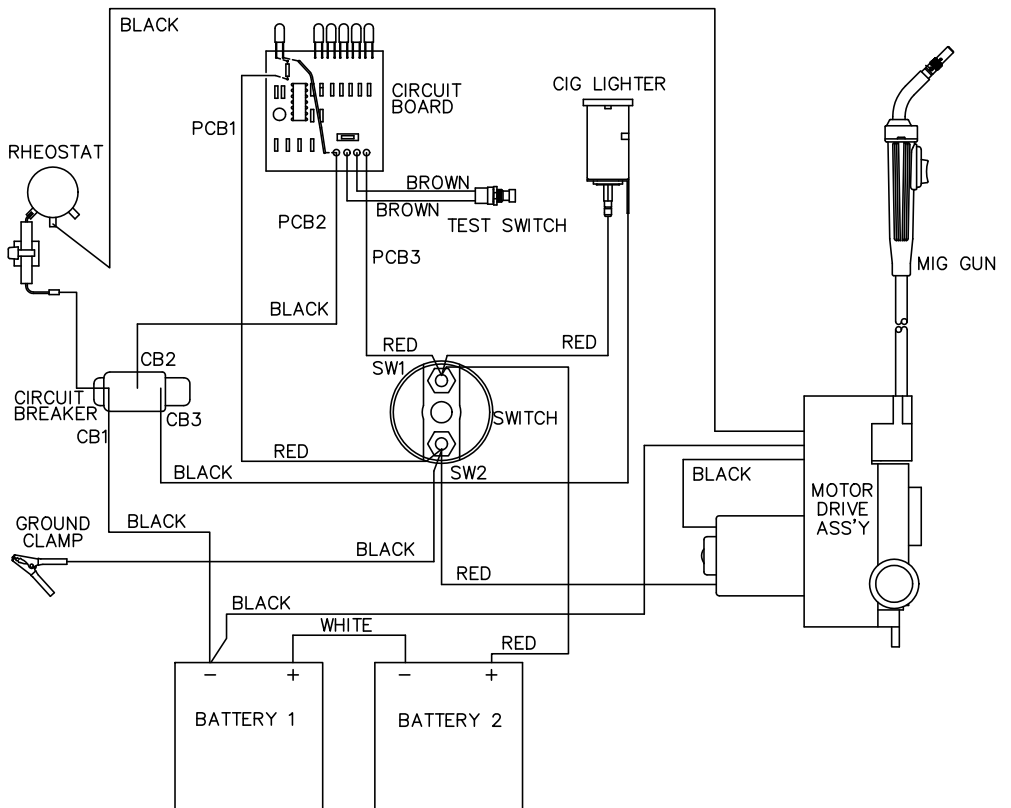
ITEM	DESCRIPTION	PART NUMBER
1.	NEGATIVE CAP & HOLSTER	312-258-000
2.	CASE, BACK	312-259-000
3.	POSITIVE CAP & HOLSTER	312-257-000
4.	CABLE, GROUND ASSEMBLY	238-491-666
5.	BATTERY, PANASONIC (QTY 2)	ES1217
6.	CIRCUIT BREAKER	246-416-666
7.	PCB ASSEMBLY	880-420-666
8.	RHEOSTATE/RESISTOR ASSY	880-390-666
9.	KEY SWITCH	246-425-666
10.	KNOB	246-399-666
11.	RETAINER, SNAP-IN W/CAP	312-283-000
12.	CIGARETTE LIGHTER SOCKET	246-417-666
13.	CASE, FRONT	312-298-000
14.	MOTOR COVER	312-265-000
15.	GEAR MOTOR/DRIVE ASSY	880-382-666
16.	KNOB	246-419-666
17.	MOLDED COVER	312-261-000
18.	GUN ASSY	238-490-666
19.	KEY (NOT SHOWN)	312-301-000
20.	CHARGER (NOT SHOWN)	141-301-000

SERVICING SHOULD BE PERFORMED BY QUALIFIED SERVICE PERSONNEL.



SCHEMATIC DIAGRAM
CORDLESS WIRE FEED WELDER

117-072-006, WFW2135a



WIRING DIAGRAM