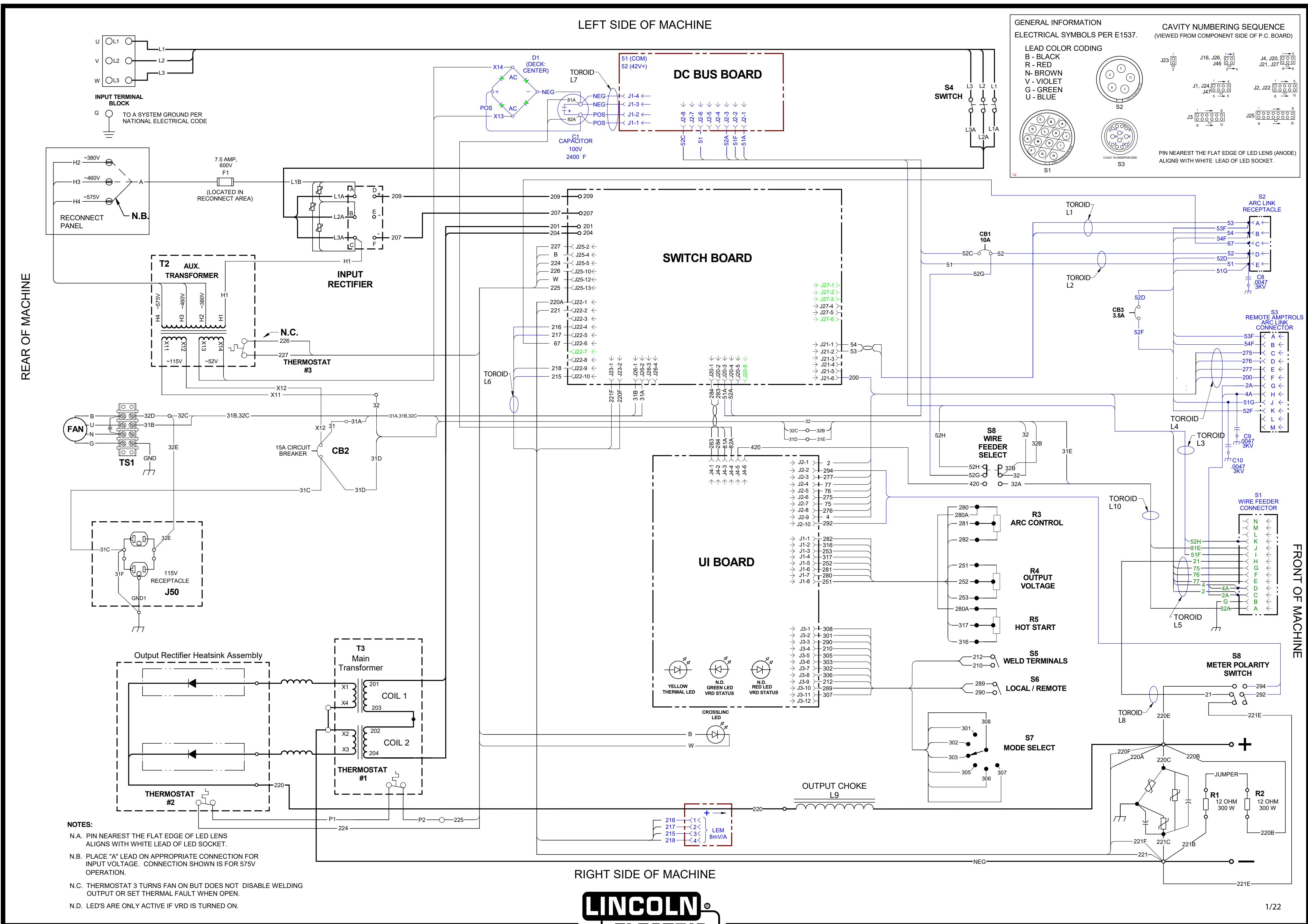


# RED-D-ARC FX650XL WIRING DIAGRAM G8737-1 REV: A



**GENERAL INFORMATION**  
ELECTRICAL SYMBOLS PER E1537.

**LEAD COLOR CODING**  
B - BLACK  
R - RED  
N - BROWN  
V - VIOLET  
G - GREEN  
U - BLUE

**CAVITY NUMBERING SEQUENCE**  
(VIEWED FROM COMPONENT SIDE OF P.C. BOARD)

**PIN NEAREST THE FLAT EDGE OF LED LENS (ANODE) ALIGNS WITH WHITE LEAD OF LED SOCKET.**

REAR OF MACHINE

FRONT OF MACHINE

- NOTES:**
- N.A. PIN NEAREST THE FLAT EDGE OF LED LENS ALIGNS WITH WHITE LEAD OF LED SOCKET.
  - N.B. PLACE "A" LEAD ON APPROPRIATE CONNECTION FOR INPUT VOLTAGE. CONNECTION SHOWN IS FOR 575V OPERATION.
  - N.C. THERMOSTAT 3 TURNS FAN ON BUT DOES NOT DISABLE WELDING OUTPUT OR SET THERMAL FAULT WHEN OPEN.
  - N.D. LED'S ARE ONLY ACTIVE IF VRD IS TURNED ON.

RIGHT SIDE OF MACHINE

