

Step 6

With 1/2 Hardware B – Attach the EE connector cable that come with the robot to the back of the Accessory Bracket

With 1/2 Hardware C – For water cooled systems, connect both red and blue water hoses to the connection kit on the back of the wire feeder.

Trim and connect the air hoses that come with the robot to the back of Item 8 [gas fitting] on the Item 6 [accessory bracket A]. Install Item 14 [gas hose assembly] to make connection between the wire feeder and the accessory bracket air inlet. Note: Teflon tape must be used to mate the item 14 gas hose to item 8 through item 11.

Two of the Item 11 are provided to use with gas connection at the bulk head bracket A [item6] and base of the robot for gas connection.

Step 7

With Hardware J – Examine and bundle the cables and hoses to provide enough clearance from any interference during robot movement. Tighten all screws and nuts.

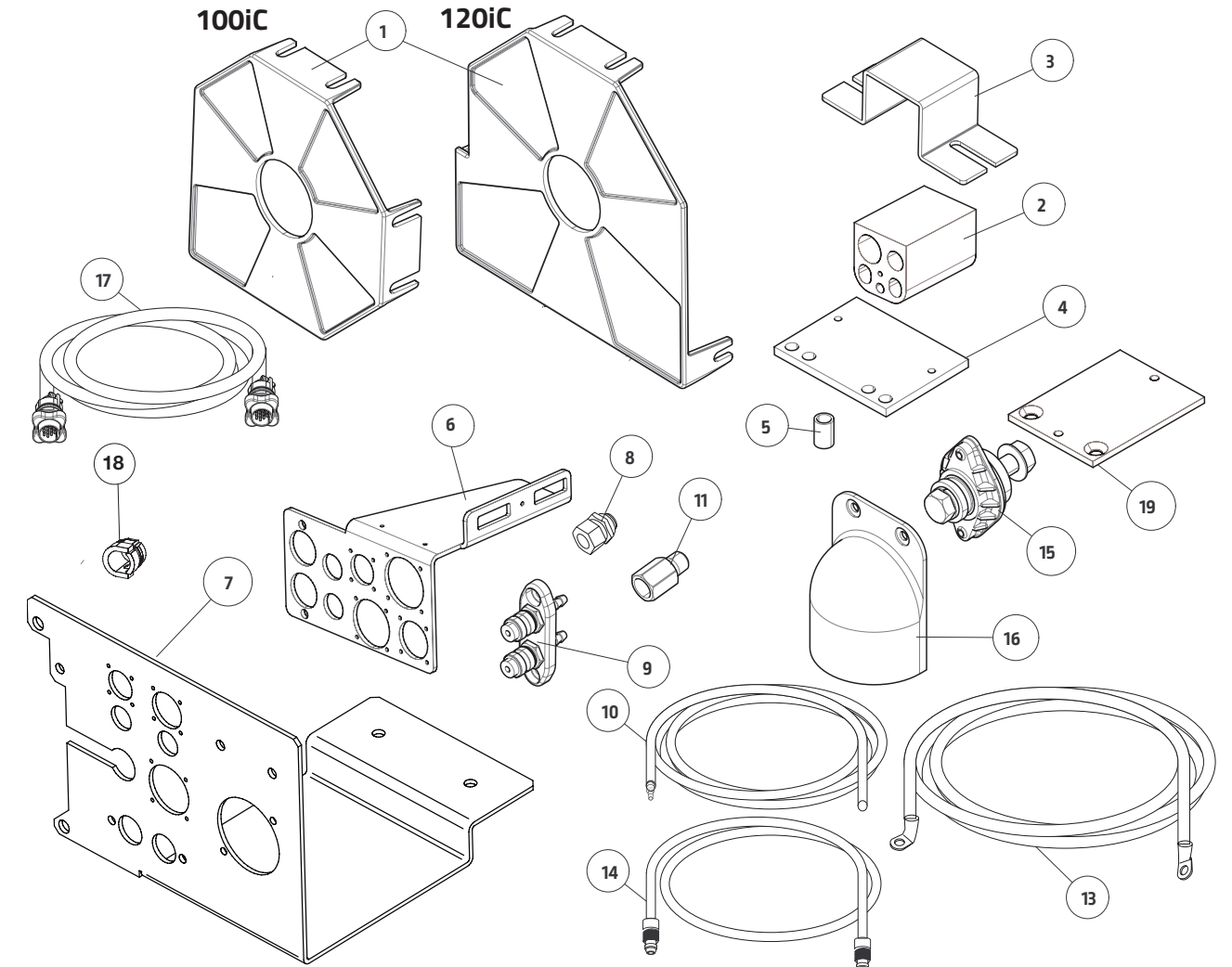
Periodically, check the screws and nuts to make sure that they are tightened; and the cables and hoses are not damaged.

Hardware Kit Packages		Fanuc K4250-100iC-A	Fanuc K4250-120iC-A
DESCRIPTION	CONTENTS	QTY	
Hardware A (item7 to Robot base)	M8x15 bolt	2	
	M8 spring washer	2	
	M8 flat washer	2	
Hardware B (cables to item 6&7)	M3x10 Screws	12	
Hardware C (item9 to item 6&7)	M4x15 bolt	4	
	M4 lock washer	4	
	M4 flat washer	8	
	M4 nut	4	
	Water Hose Clamp	4	
Hardware D (item15&16 to item7)	M4x25 bolt	2	
	M4 nut	2	
	M4 flat washer	2	
	M5x16 bolt	2	
	M5 nut	2	
	M5 flat washer	4	
	G 1/2 Bolt	1	
G 1/2 flat washer	2		
G 1/2 Nut	1		
Hardware F (item3&4 to robot & item 7)	M8x50 bolt (For 120ic only)	4	
	M8x 20 bolt (For 100ic only)	4	
	M8 spring washer	4	
	M8 flat washer	8	
	M6x20 bolt	6	
	M6 spring washer	8	
	M6 flat washer	8	
Hardware H (wire feeder to robot)	M6X14	2	
	M6x10 bolt	2	
	M6x16 bolt	6	
	M6 spring washer	6	
Hardware I (For item1 to robot)	M6 flat washer	6	
	M6x22 bolt (For 120iC only)	1	
	M6x12 bolt [4 for 100iC, 3 for 120iC]	4	
	M6 flat washer	4	
Hardware J	M6 spring washer	4	
	Black Zip Tie	10	
	#8-32 x .375 Phillips Pan Head Screw	6	
Hardware M (For AutoDrive S/SA feeder to feeder bracket, and feeder bracket to arm)	M4 Oversized Washer	6	
	M6 X 1.0 X 12 mm SHCS	4	
	M6 lock washer	4	
	M8 X 15 bolt	4	
	M8 lock washer	4	

Fanuc Dress Out Kit Instruction Manual



Select your arm (Not for Model 100iC8L):		Fanuc K4250-100iC-A	Fanuc K4250-120iC-A
Item	Description	Part Number	Qty
1	INSULATOR	S23119-1	1
2	RUBBER CABLE HOLDER	S31678	4
3	CABLE HOLDER BRACKET, TOP	M25431-1	4
4	CABLE HOLDER BRACKET, BOTTOM	S30266-17	2
5	SPACER, CABLE BRACKET	N/A	0
6	BULK HEAD BRACKET, A	L16629-1	1
7	BULK HEAD BRACKET, B	L16629-18	1
8	GAS FITTING	S30266-8	2
9	WATER CONNECTION KIT	S31896	1
10	WATER HOSE [3.9M] - Red & Blue	E4823-19	1
11	FEMALE CONNECTOR	S30266-16	2
12	HARDWARE KIT	S30266-23	1
13	POWER CABLE WITH 60 DEGREE BEND	M25439-11(3.5M)	1
14	GAS HOSE , 0.3 M	S30266-20	1
15	OUTPUT STUDS	S16656-5	1
16	OUTPUT STUDS COVER	M20007	2
17	ARCLINK CONTROL CABLE	M25431-15 (3.2M)	1
18	LEAD GROMMET	S27052-2	1
19	3rd AXIS CABLE HOLDER BRACKET, BOTTOM	L16629-20	1



WARNING

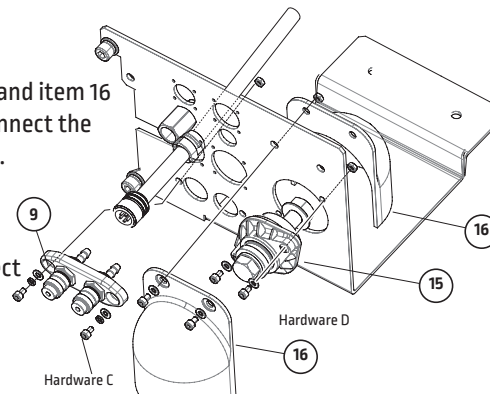


Turn off power to arm and feeder before installing dress out kit. Verify that power is not available to wirefeeder. Only qualified personnel should install Dress Out Kit.

Step 1

With Hardware D – Install item 15 (power stud) and item 16 (stud covers) to Item 7 (bulk head bracket B). Connect the end of the power cable with 60° bend to item 15.

With 1/2 Hardware C – Install item 10 (water connection kit) to item 7 (bulk head bracket B). Trim excess water tubes, if necessary and connect the hoses with connectors.



Step 2

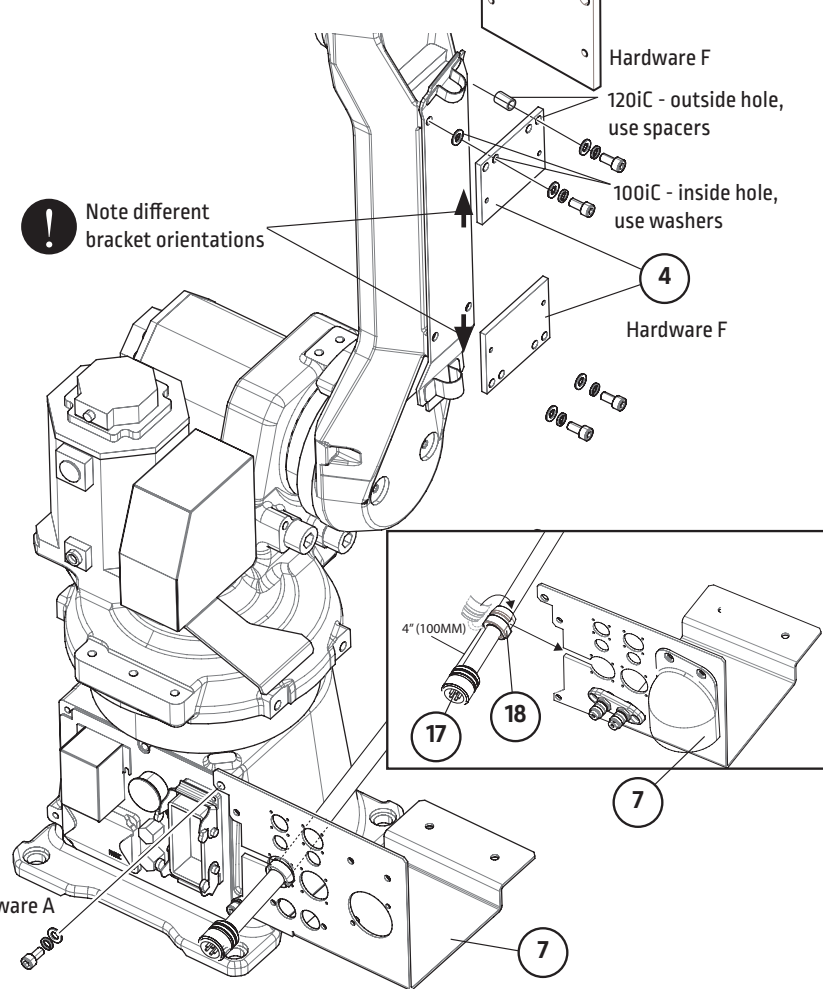
Peel off the masking tape, if it is still on Item 7, Bulk Head Bracket B, to provide good ground connection.

With Item 18 grommet, anchor the control cable Item 17, 4 inch (100mm) away from the male connector, thru the slot on the side of Item 7, Bulkhead Bracket B

With Hardware A – Install Item 7, bulk head bracket B, to the base of the robot. If any bolts are present, remove them and use the supplied bolts, lock washers and plain washers.

With Hardware F – Install item 4, cable holder bracket bottom. For 120iC, use Item 5 spacers (Item 5). For 100iC, replace spacer with 4 flat washers in the Hardware F.

Spacers used for 120 iC – Screws and spacers should be lined up on the outside set of the mounting holes. 100iC use the inner sets of holes on the bracket.

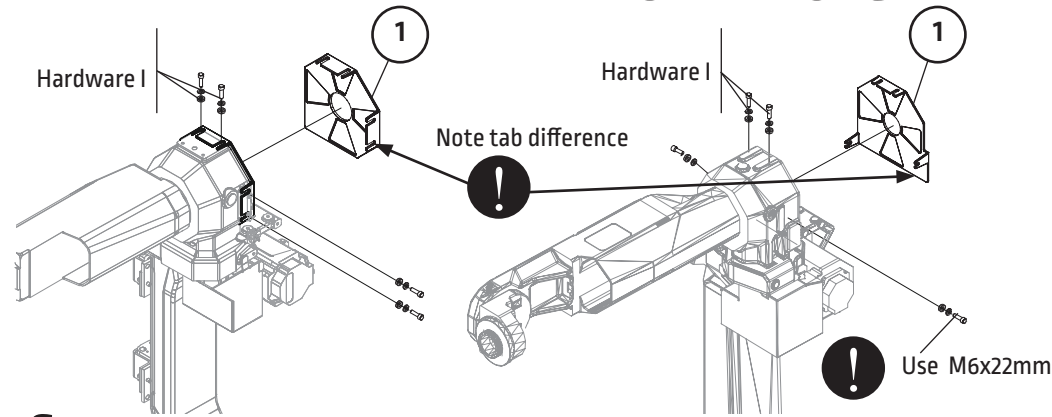


Step 3

With Hardware I – Install item 1, the motor insulator, on to the robot.

for 100iC

for 120iC



Step 4

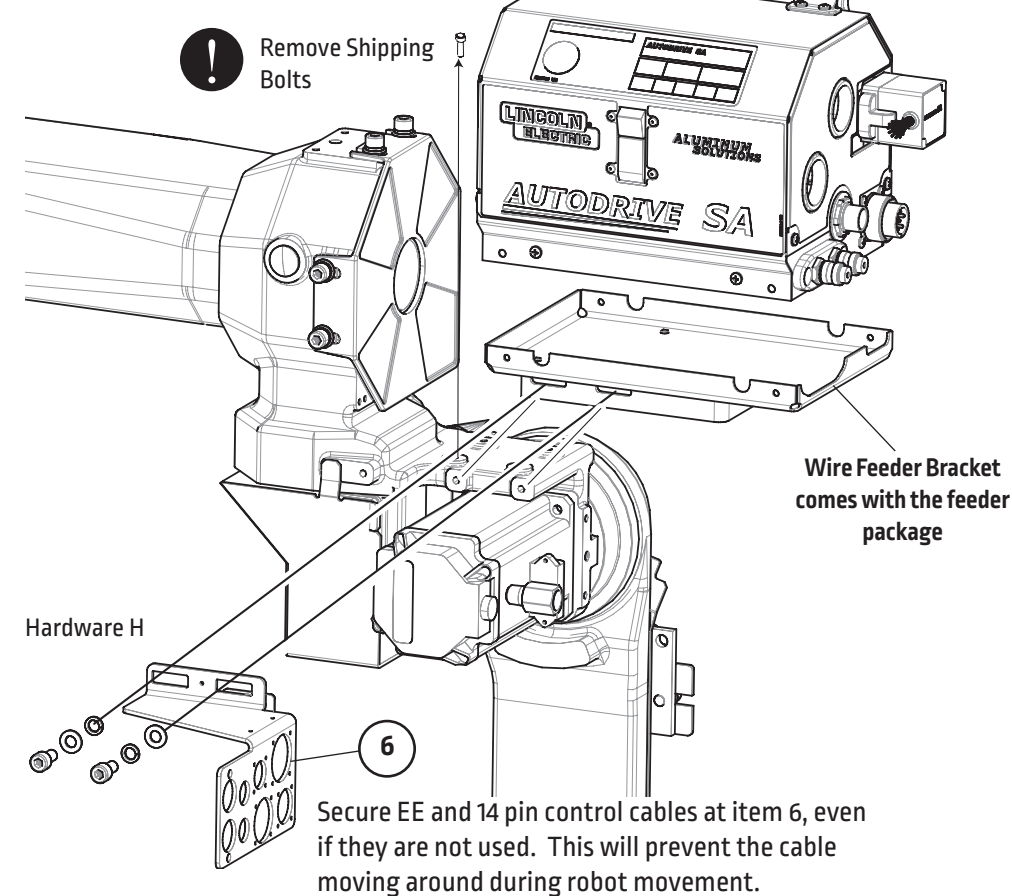
Refer to AutoDrive SA or AutoDrive S Instruction Manual to install the torch and goose neck assemblies.

Remove top shipping bolts, if any.

With Hardware H – Install Wire Feeder Bracket and Item 6 onto arm. With Hardware M, install the wire feeder to the wirefeeder bracket. Install the two inside ones at the wire feeder and the side flange below the feeder door first. Do not tighten the screws until all 6 sets of flat washers and screws are in place.

Tighten all Hardware H on robots.

Follow the AutoDrive SA and S Operator Manual to connect the feeder and torch together.



Step 5

Connect the flat end of item 13 (power cable) to inside the feeder as shown. Connect item 17(Arclink Control Cable) to the back of the feeder. Install Item 19 bracket to arm.

Hardware J – Bundle the water Hoses and power cables and install them into 3 of Item 2's (rubber cable holders).

Power and control cable should be closer to the arm for two side arm mounting. The water hoses should be closer to the ground at the B Bulk Head Bracket.

Hardware H –Mount two item 2 with two item3 on the robot side arm; and the 3rd one on the bulk head bracket B by the base of the robot; with water lines toward the bottom.

The white tape mark on the cables, for your reference, are to be tugged in the highest rubber cable holder. The black foam tape on the cable is used to prevent the cable from slip down the cable holder. Secure all of them so that cables do not slip down over time.

