

# AC/DC 225/125 (50 Hz, 220V ONLY) WIRING DIAGRAM M22430 REV: B



**WARNING**



**ELECTRIC SHOCK CAN KILL**

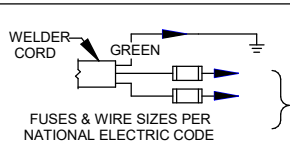
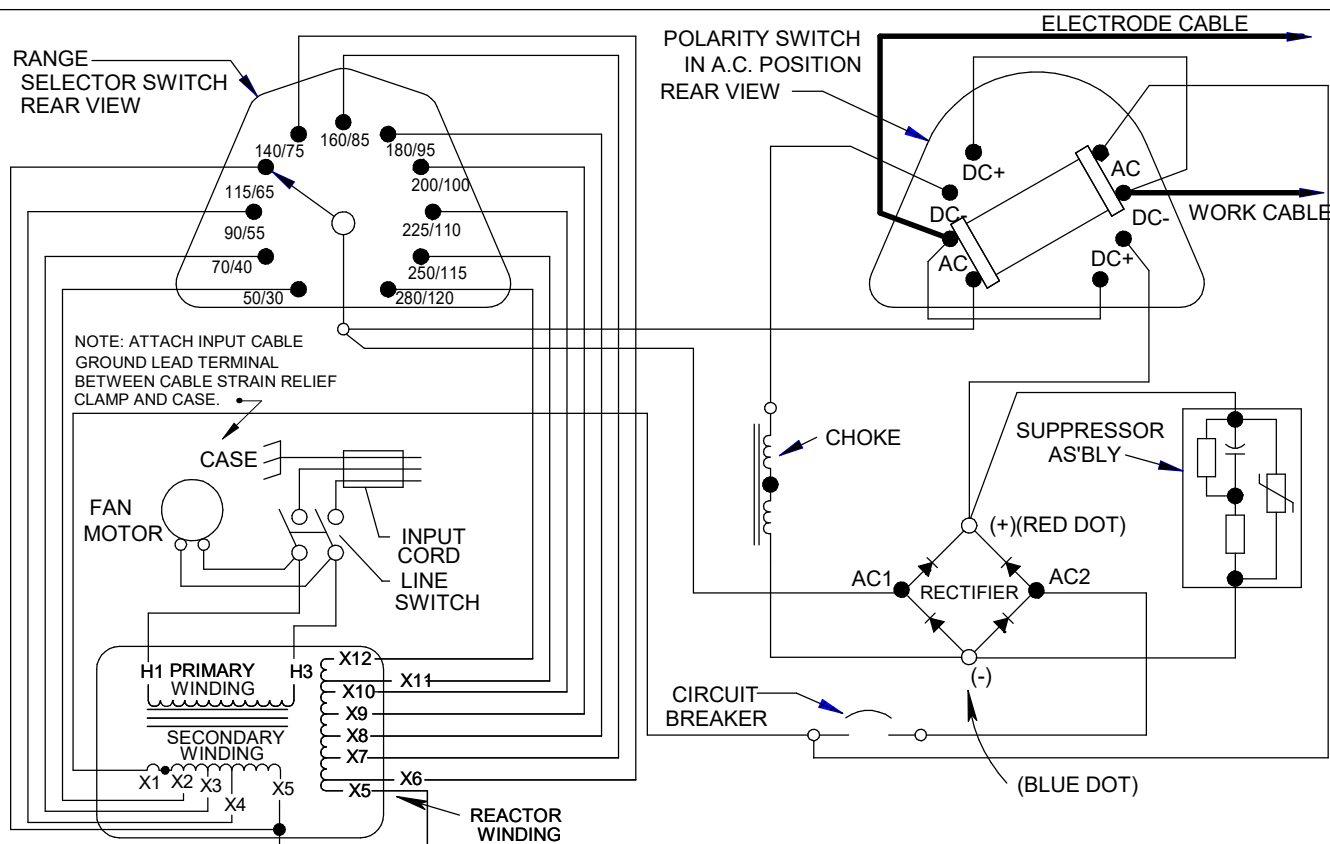
- Do not operate with covers removed
- Disconnect input power before servicing
- Do not touch electrically live parts

## CAUTION

IF ANY LEAD CONNECTION TO THE RECTIFIER ALUMINUM HEAT SINKS IS DISCONNECTED, TAKE THE FOLLOWING STEPS BEFORE RECONNECTING:

1. CLEAN MATING SURFACES OF ALUMINUM SINK & CONNECTING LEAD.
2. APPLY THIN UNIFORM COATING OF DOW CORNING 340 COMPOUND OR EQUIVALENT TO ENTIRE SINK AREA WHERE THE CONNECTING LEAD WILL COME IN CONTACT WITH IT.
3. RECONNECT, PLACING THE PRE-TINNED SURFACE OF THE LEAD AGAINST THE COATED AREA OF THE HEAT SINK. PLACE A PLAIN WASHER UNDER THE CONNECTING SCREW HEAD AND A PLAIN WASHER AND A LOCK WASHER UNDER THE NUT WITH THE LOCK WASHER AGAINST THE NUT. TIGHTEN TO A MINIMUM OF 70 IN.-LBS. TORQUE.

FAILURE TO FOLLOW THE ABOVE INSTRUCTIONS CAN RESULT IN CORROSION & OVERHEATING OF THE CONNECTION.



CUSTOMER CONNECTION OF WELDER CORD TO POWER SUPPLY

{ TO A SYSTEM GROUNDING WIRE, TO A COLD WATER LINE OR TO A PIPE DRIVEN EIGHT FEET INTO THE GROUND PER NATIONAL ELECTRICAL CODE

{ TO HOT WIRES OF A 3 WIRE EDISON SINGLE PHASE SYSTEM OR ACROSS ONE PHASE OF A 3 PHASE SYSTEM

ELECTRICAL SYMBOLS PER E-1537

THE LINCOLN ELECTRIC CO.  
CLEVELAND OHIO U.S.A.

AC/DC 225/125  
(50 HZ)

5/22