

# LF 52Ds

Spare Parts.....	1
Figure A: Machine Assembly .....	2
Figure B: Partition Assembly .....	3
Figure C: Wire Drive Assembly .....	4
Figure D: Front Assembly.....	5
Figure E: Rear Panel .....	6
Miscellaneous Items (not shown in figure A, B, C, D, E).....	6
Electrical Schematic.....	7
CODE: 50668 .....	7



# Spare Parts

SP50668 REV02  
11/2022

ASSEMBLY PAGE NAME			Machine Assembly	Partition Assembly	Wire Drive Assembly	Front Assembly	Rear Panel	Miscellaneous Items
CODE NO.:	K NO.:	FIGURE NO.:	A	B	C	D	E	
50668	K14186-2	LF 52Ds	1	1	1	1	1	1

\*items highlighted in bold are recommended spare parts

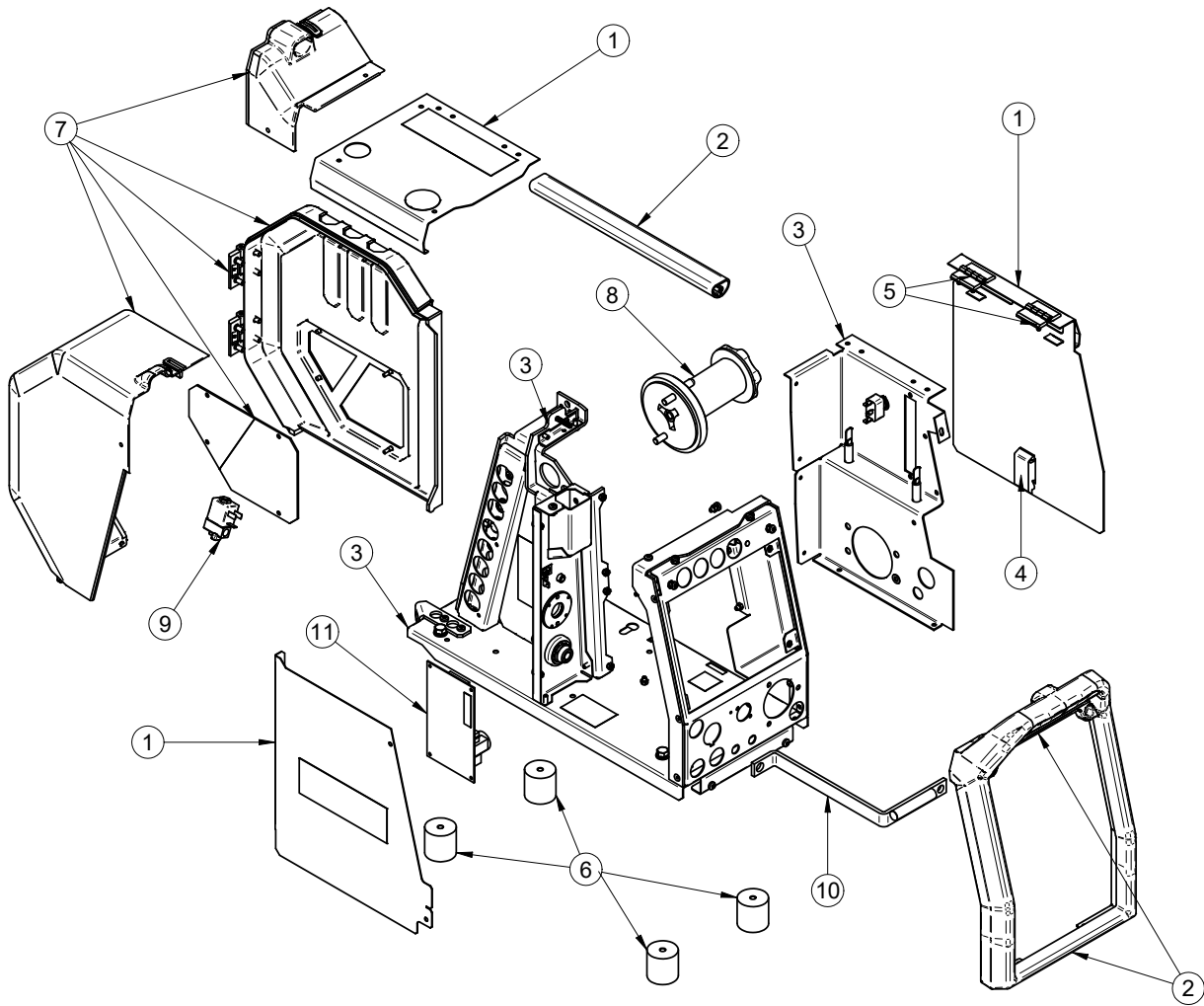


Figure A

**Figure A: Machine Assembly**

Item	Description	Part Number	QTY	1	2	3	4	5	6	7	
1	SIDE PANEL KIT includes:	T-8040-117-1R	1	X							
	LEFT SIDE PANEL		1	X							
	RIGHT SIDE PANEL		1	X							
	COVER		1	X							
	LABLE		5	X							
	SHELF		1	X							
2	FRONT PANEL FRAME KIT:	T-8040-040-1R	1	X							
	FRONT PANEL		1	X							
	RED INSERT		1	X							
	HANDLE		1	X							
3	BASE, PARTITION, SHELF KIT:	T-8040-062-1R	1	X							
	BASE ASSEMBLY		1	X							
	PARTITION ASSEMBLY		1	X							
	PARTITION LABEL		1	X							
	FRONT PANEL		1	X							
	BACK LABEL		1	X							
	BRACKET		1	X							
4	LOCK	0654-610-004R	1	X							
5	LEAF HINGE	0654-610-007R	2	X							
6	RUBBER M8 40x40	1373-184-039R	4	X							
7	PLASTIC COVER KIT	T-8040-044-1R	1	X							
8	REEL HUB STANDARD	0744-000-192R	1	X							
9	GAS SOLENOID	W8500011R	1	X							
10	COPPER BAR	R-1212-135-1R	1	X							
11	<b>CONTROL BOARD</b>	<b>R-6042-096-1R</b>	<b>1</b>	<b>X</b>							

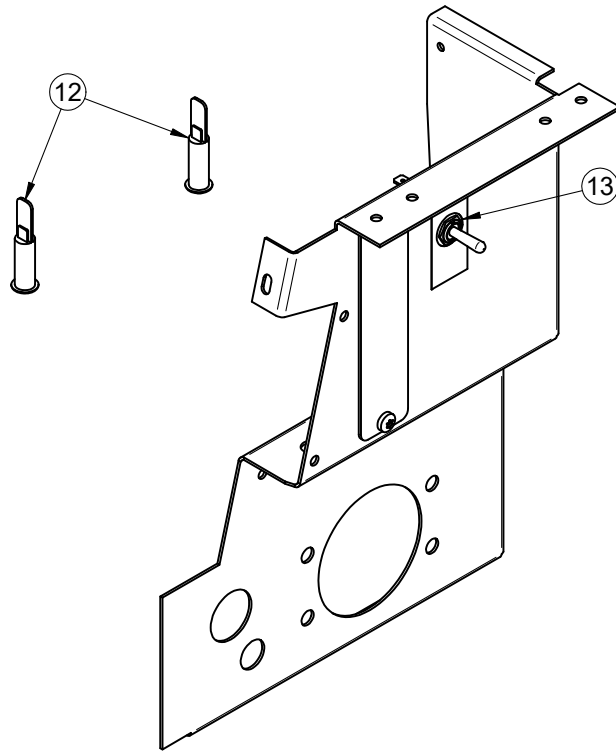


Figure B

**Figure B: Partition Assembly**

Item	Description	Part Number	QTY	1	2	3	4	5	6	7
12	WHITE LAMP	0917-421-049R	2	X						
13	SWITCH	1115-280-004R	1	X						

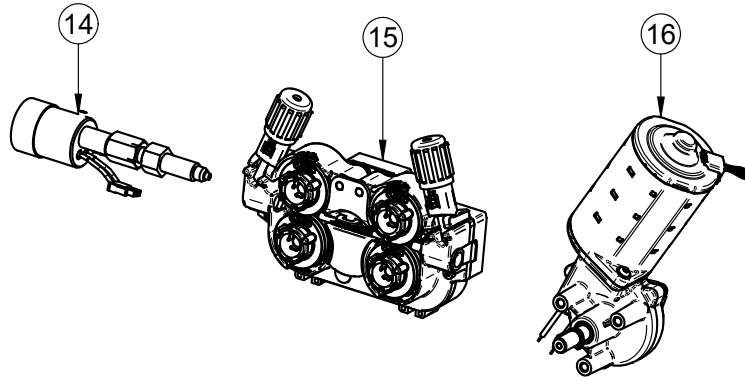


Figure C

**Figure C: Wire Drive Assembly**

Item	Description	Part Number	QTY	1	2	3	4	5	6	7
14	EURO SOCKET	T-8040-051-1R	1	X						
15	WIRE FEEDER	0744-000-009R	1	X						
16	WIRE MOTOR	T-8040-049-1R	1	X						

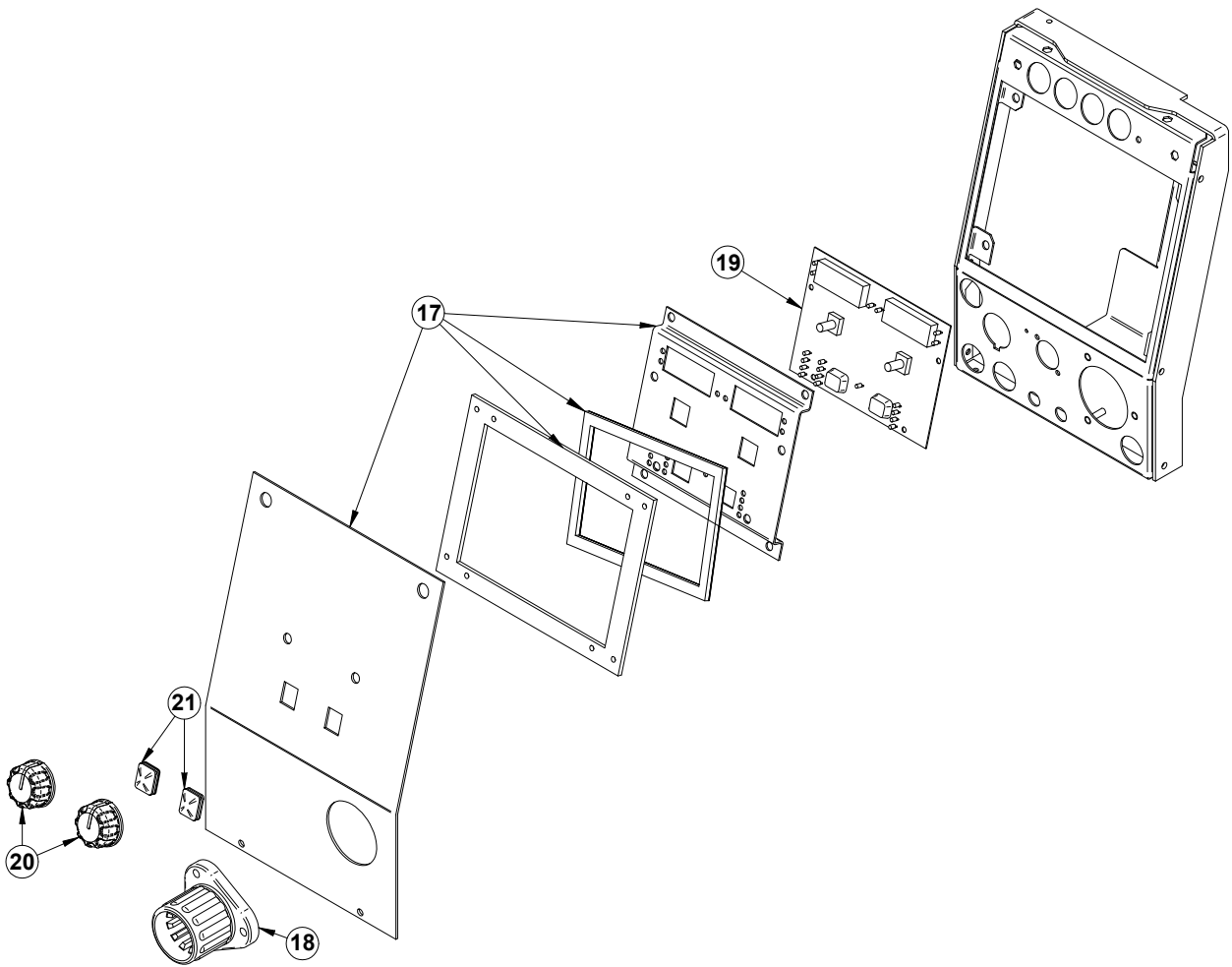


Figure D

Figure D: Front Assembly

Item	Description	Part Number	QTY	1	2	3	4	5	6	7
17	FRONT PANEL KIT:	T-8040-063-2R	1	X						
	DISPLAY FRONT PANEL		1	X						
	BRACKET		1	X						
	BRACKET		1	X						
	GASKET		1	X						
18	EURO SLEEVE	C-1891-006-1R	1	X						
19	<b>USER INTERFACE PCB</b>	<b>R-6042-116-1R</b>	<b>1</b>	<b>X</b>						
20	KNOB	9SM22778-2	2	X						
21	<b>BUTTON</b>	<b>9SS23055</b>	<b>2</b>	<b>X</b>						

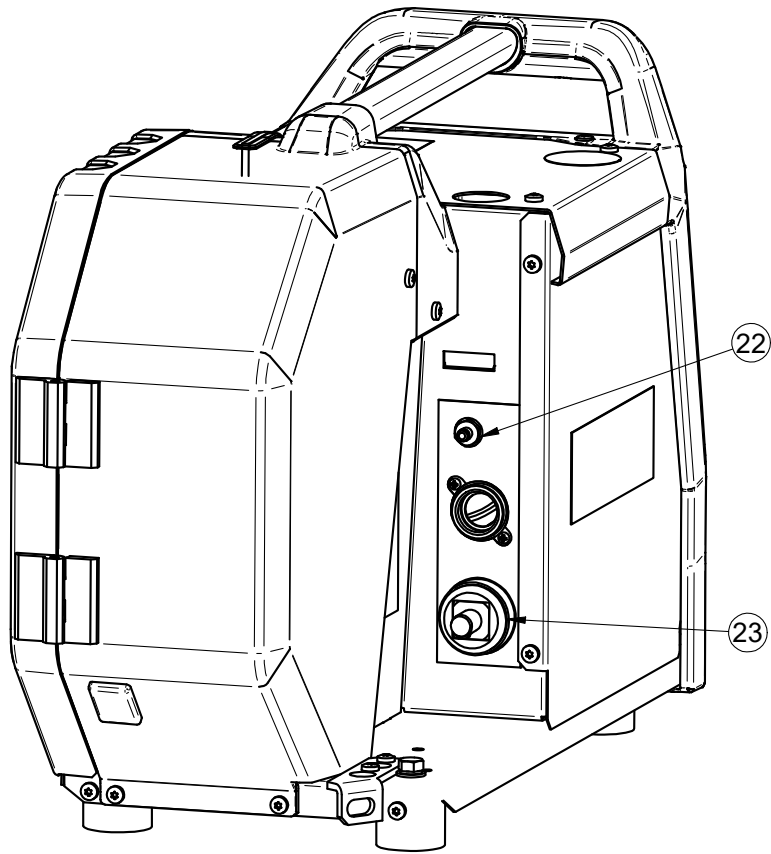


Figure E

**Figure E: Rear Panel**

Item	Description	Part Number	QTY	1	2	3	4	5	6	7
22	GAS CONNECTION KIT	T-8040-055-1R	1	X						
23	SOCKET	D-2985-002-1R	1	X						

**Miscellaneous Items (not shown in figure A, B, C, D, E)**

Item	Description	Part Number	QTY	1	2	3	4	5	6	7
24	HARNESS KIT	T-8040-053-1R	1	X						

