

PROCEDURE FOR INSTALLING THE TABLET TP APP

This document describes the procedures used to install the Tablet TP app. By following these procedures, users can install the Tablet TP app onto their Tablets.

Note

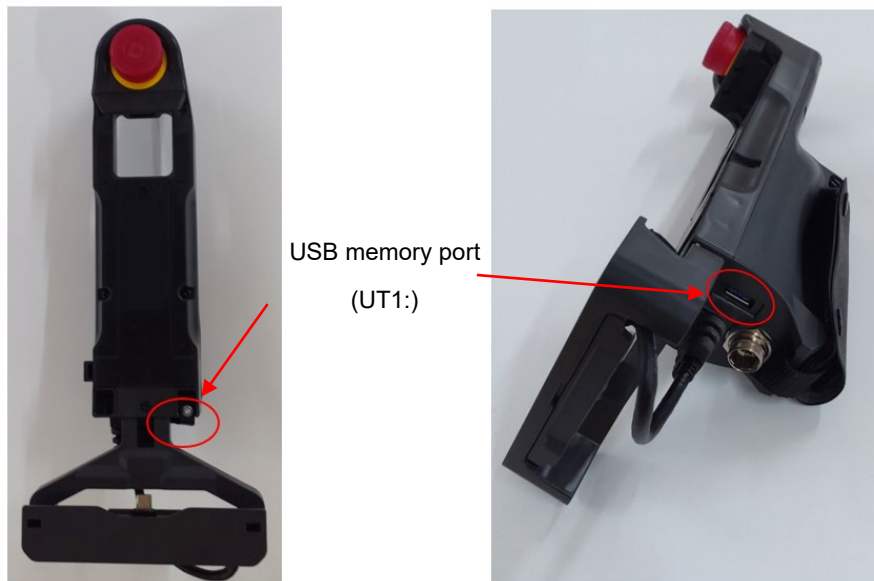
- This document is the procedure manual for installing the Tablet TP app.
- The Tablet TP app is only for Android OS.
- Tablet TP can only be used for the CRX robot series or robot controllers with the Tablet TP option (S527) ordered.
- Some USB memory devices might not be supported the installation. Please use the USB memory devices FANUC recommends or have tested.

Preparation

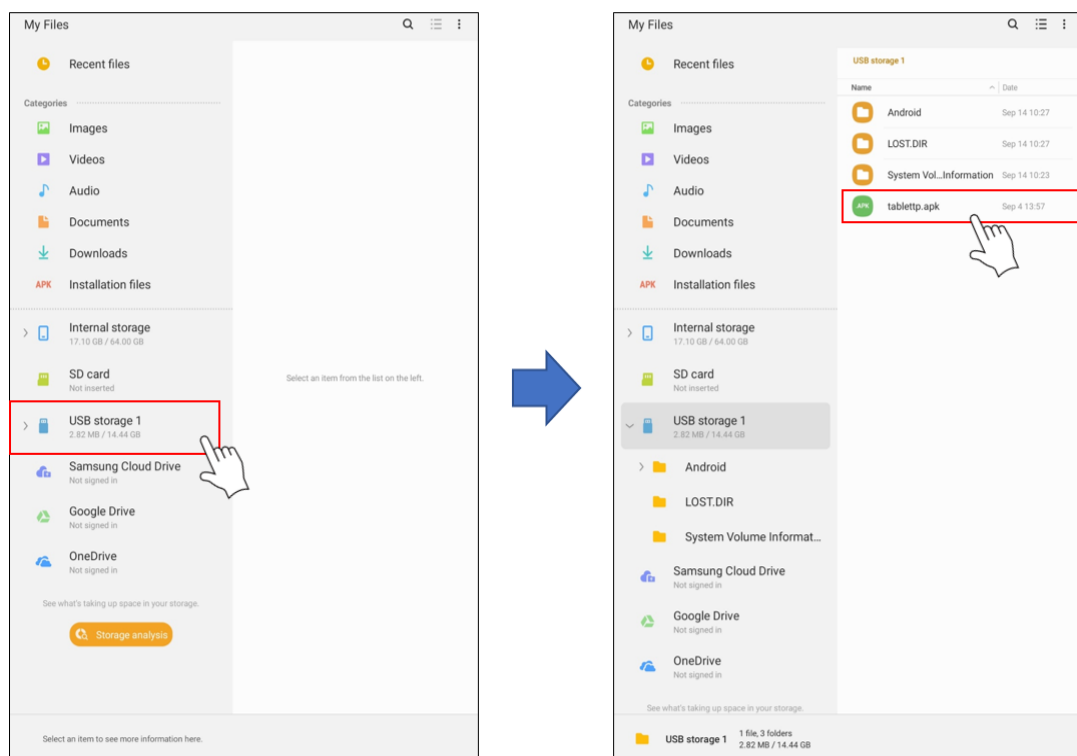
1. Download the latest Tablet TP app installer zip file from your regional FANUC customer service website that provides software downloads.
In Japan, the website is <https://member.fanuc.co.jp/portal>.
The website in your region will vary. Please visit www.fanuc.com to select your region.
2. Prepare a USB device containing no files or folders. Format the USB memory device as FAT32. For more information about formatting as FAT32, read "Format" in "8.1 FILE INPUT/OUTPUT UNITS" of "R-30iB/R-30iB Mate/R-30iB Compact Plus/R-30iB Mini Plus CONTROLLER OPERATOR'S MANUAL (Basic Function) (B-83284)".
3. Unzip the Tablet TP app installer zip file and copy "tablettp.apk" to the root directory of the USB memory device prepared in Step 2.

Procedure to install Tablet TP

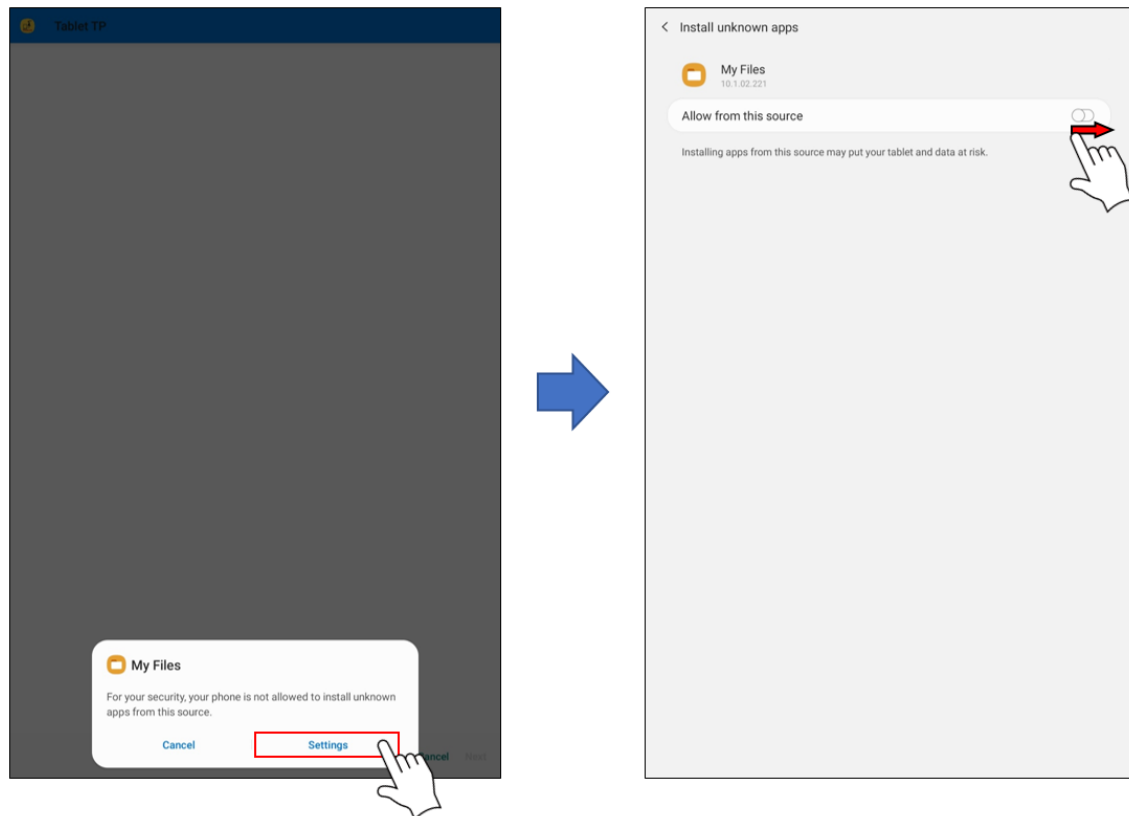
1. Turn on the controller.
2. Insert the USB memory device prepared in Step 3 into the USB memory port on the Tablet Base (UT1:).



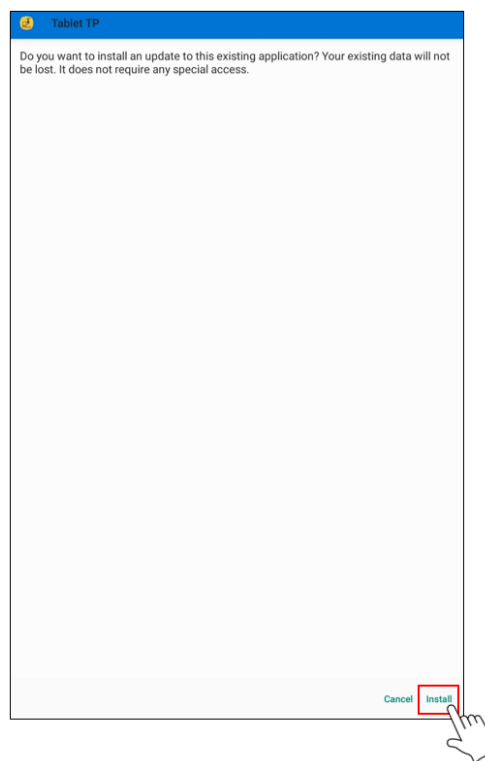
3. Open “My Files” or any default file viewer installed on the tablet.
4. Touch “USB storage 1” or the name of the USB memory device inserted in Step 1, and choose “tablettp.apk”.



5. If the following warning appears, press “Settings” and give permission to the file viewer by sliding “Allow from this source”

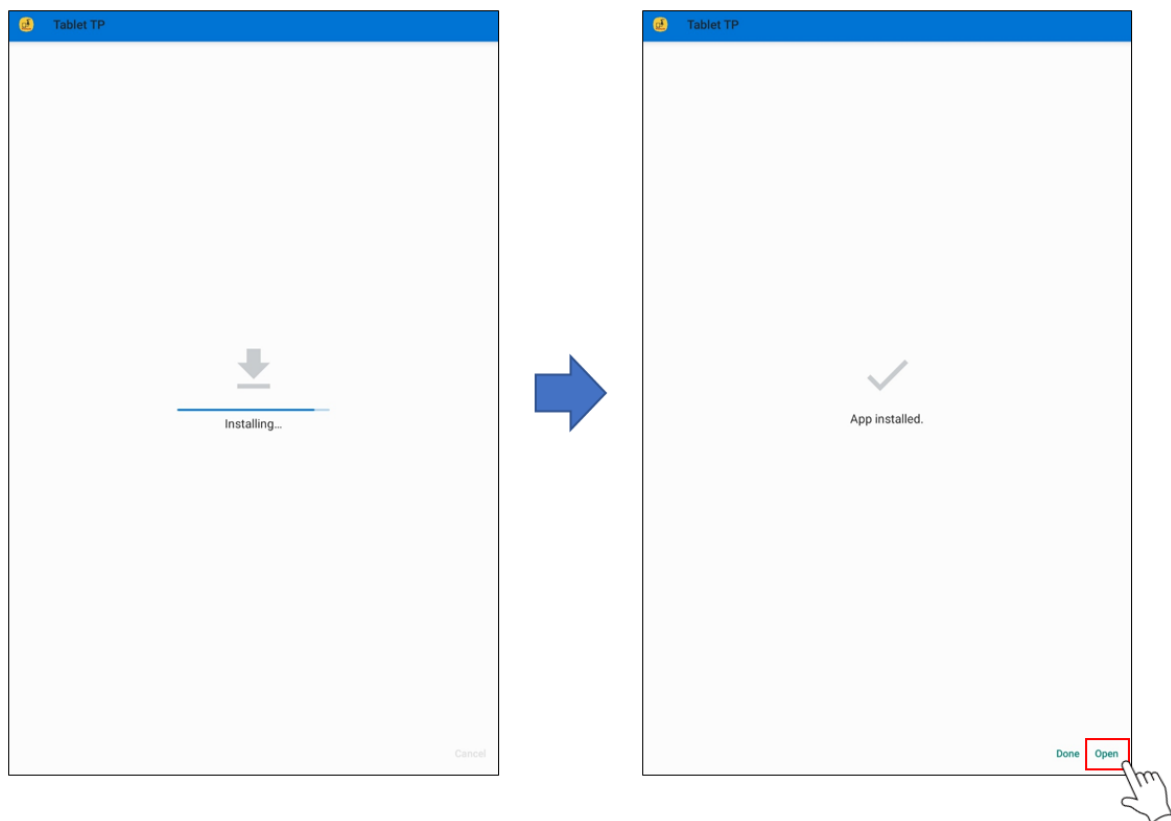


6. The following screen will be displayed after returning to the file viewer. Press “Install” on the bottom right of the screen.

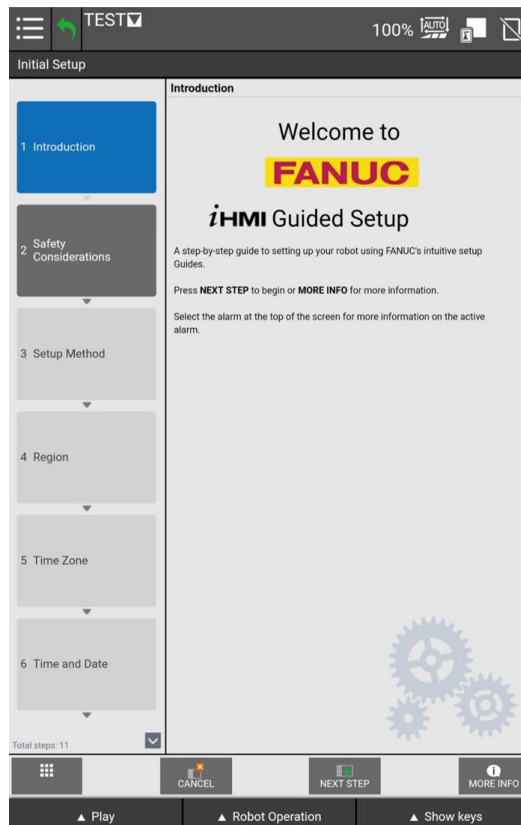


7. Wait for about a minute until the installation process is completed.
8. The following screen will be displayed when the installation process is completed.

Activate the Tablet TP by touching “Open”.



9. The Robot operation screen should be displayed when the Tablet TP app is activated.



Trouble shooting

1. Procedure to retry installing Tablet TP when installing has failed
 - If an older version of Tablet TP is already installed on the Tablet, try uninstalling the app and follow the steps from the start. If FANUC manuals are installed in the Tablet TP app, uninstalling the app will delete manuals as well, and therefore users must reinstall the manuals after the Tablet TP app is installed.
2. Other issues
 - Unmount the USB memory device before removing it from the USB memory port. For the FANUC tablet, the USB memory is unmounted by following procedure.
 - Open the “Settings” app, and select “Device care”
 - Select “Storage Settings” from a menu.
 - Press the unmount button next to the USB memory storage