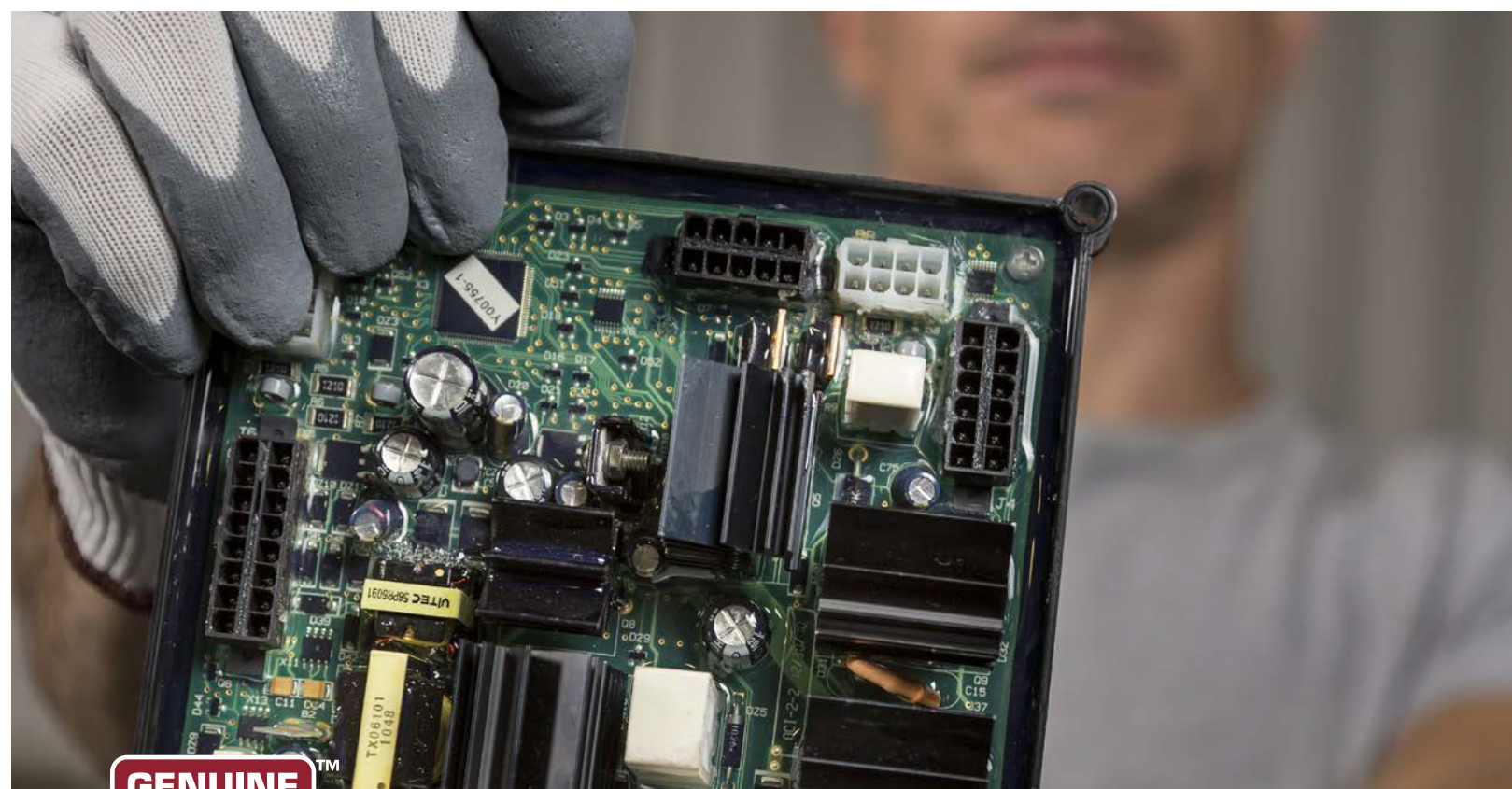


2024 Expendable Parts Guide





Unrivaled Service.

Finding the Code Number

There are normally three ways to identify a Lincoln Electric welder:

1. Product Number – letter "K" or "U" followed by numbers and/or letters. For example: K2175-1
2. Code Number – 4 to 5 digit number. For example: 10859
3. Serial Number – 11 digit alphanumeric. For example: U1060512345

When you use Service Navigator at lincolnelectric.com, you need to enter the code number of the welder. A common mistake is to enter the product number.

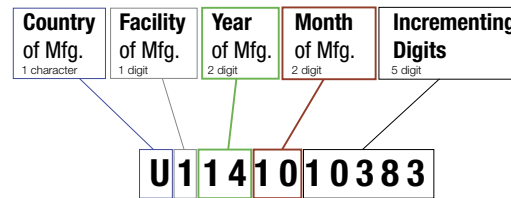
The code number can be found on the nameplate of the welder, located either on the front or back of the unit.

Find the closest Lincoln Authorized Repair Facility

www.lincolnelectric.com/locator

Lincoln Authorized Repair Facilities are certified on the latest products, troubleshooting procedures and repair techniques.

Determining Manufacturing Date From Serial Number



Serial Number is REQUIRED for Warranty Claims



CUSTOMER ASSISTANCE POLICY

The business of The Lincoln Electric Company is manufacturing and selling high quality welding equipment, consumables, and cutting equipment. Our challenge is to meet the needs of our customers and to exceed their expectations. On occasion, purchasers may ask Lincoln Electric for information or advice about their use of our products. Our employees respond to inquiries to the best of their ability based on information provided to them by the customers and the knowledge they may have concerning the application. Our employees, however, are not in a position to verify the information provided or to evaluate the engineering requirements for the particular weldment. Accordingly, Lincoln Electric does not warrant or guarantee or assume any liability with respect to such information or advice. Moreover, the provision of such information or advice does not create, expand, or alter any warranty on our products. Any express or implied warranty that might arise from the information or advice, including any implied warranty of merchantability or any warranty of fitness for any customers' particular purpose is specifically disclaimed.

Lincoln Electric is a responsive manufacturer, but the selection and use of specific products sold by Lincoln Electric is solely within the control of, and remains the sole responsibility of the customer. Many variables beyond the control of Lincoln Electric affect the results obtained in applying these types of fabrication methods and service requirements.

Subject to Change – This information is accurate to the best of our knowledge at the time of printing. Please refer to www.lincolnelectric.com for any updated information.

Welding Helmets & Gear

PAPR™ Series Helmet.....4
VIKING™ Helmets.....5
Retail Helmets.....6
OMNISHield Face Shields.....9

Recommended Replacement Guns 10

MIG Guns

Magnum® PRO 100L11
Magnum® PRO 175L12
Magnum® PRO 250L Gun Expendables.....13
Magnum® PRO 350A Gun Expendables14
Magnum® PRO 400 & 500 Water-Cooled16
Magnum® PRO Barrel & Curve 550A Gun Expendables17
Magnum® PRO Fume Gun Expendables.....18

Magnum® Gun Contact Tips19
Magnum® Gun Gas Nozzles20
Magnum® Gun Insulators and Gas Diffusers.....21
Magnum® Gun Cable Liners and Gun Tubes22
Magnum® 100L40
Magnum® 20041
Magnum® 250 & 250L43
Magnum® 300 & 40044
Magnum® 550.....46

Push Pull & Spool Guns 23

Magnum® PRO AL Push-Pull Guns23
Magnum® PRO AL Pistol.....24
Cougar™25

Innershield Guns

K126™ PRO Expendables26
K126™ PRO Gun26
Magnum® Classic Self-Shielded Semiautomatic Guns.....27

Plasma Torches

PCT-20 Handheld Torch29
PCT-40 & 60 Torch & Cable29
PCT-80 Machine Torch.....30
PCT-80 Handheld Torch.....30
Tomahawk® LC2531
Tomahawk® LC40.....31
Tomahawk® LC 65 Handheld Plasma Torch.....32
Tomahawk® LC 65M Machine Plasma Torch34
Tomahawk® LC105 Handheld Plasma Torch34
Tomahawk® LC105MR Machine Plasma Torch34
Torchmate®35

TIG Torch 36

TIG Expendable Parts36
TIG Replacement Parts37

Drive Rolls 38

Engine Service Kits45

Weld Fume Control Replacement Filters49



For complete parts information on Lincoln Electric products, refer to the online replacement parts at parts.lincolnelectric.com

All line art is not drawn to scale.

Part numbers beginning with a "KP" are considered "expendable" parts. Expendable parts may be available individually or in bulk packages, depending upon the specific part. KP parts that are bulk packaged are identified with a "B" suffix on the end of the base part number (e.g. KP2010-1B1).

Please note that many of the parts that are bulk packaged are only available for purchase in these bulk quantities. Parts that are only available in bulk packages are identified with an asterisk (*) and must be ordered in multiples of the "Order Quantity Multiples" number shown in the list (e.g. 10).

PAPR™ Series Helmet



Shown: KP5121-1 VIKING™ PAPR™ 3350 Series Helmet

MODEL	OUTSIDE COVER LENS	SWEATBAND	BATTERY PACK STANDARD	HE FILTER ASSEMBLY	PRE-FILTER	CHEATER LENS (PER SIZE)
VIKING™ PAPR™ 3350 Series Helmet	KP2898-1	KP3943-1	KP3937-1	KP3424-2 KP3424-6	KP3935-1	KP3046-100 (1.00 MAG) KP3046-125 (1.25 MAG) KP3046-150 (1.50 MAG) KP3046-175 (1.75 MAG) KP3046-200 (2.00 MAG) KP3046-225 (2.25 MAG) KP3046-250 (2.50 MAG)

VIKING Helmets



SHOWN: VIKING™ 2450D K3230-3 Black

MODEL	OUTSIDE COVER LENS	SWEATBAND	CHEATER LENS (PER SIZE)
VIKING™ 3350 Series	KP2898-1	KP2930-1	KP3046-100 (1.00 MAG) KP3046-125 (1.25 MAG) KP3046-150 (1.50 MAG) KP3046-175 (1.75 MAG) KP3046-200 (2.00 MAG) KP3046-225 (2.25 MAG) KP3046-250 (2.50 MAG)
VIKING™ 3250D FGS	KP3700-1	KP2930-1	KP3046-100 (1.00 MAG) KP3046-125 (1.25 MAG) KP3046-150 (1.50 MAG) KP3046-175 (1.75 MAG) KP3046-200 (2.00 MAG) KP3046-225 (2.25 MAG) KP3046-250 (2.50 MAG)
VIKING™ 2450 Series	KP2898-1	KP2930-1	KP3046-100 (1.00 MAG) KP3046-125 (1.25 MAG) KP3046-150 (1.50 MAG) KP3046-175 (1.75 MAG) KP3046-200 (2.00 MAG) KP3046-225 (2.25 MAG) KP3046-250 (2.50 MAG)
VIKING™ 2450D	KP2898-1	KP2930-1	KP3046-100 (1.00 MAG) KP3046-125 (1.25 MAG) KP3046-150 (1.50 MAG) KP3046-175 (1.75 MAG) KP3046-200 (2.00 MAG) KP3046-225 (2.25 MAG) KP3046-250 (2.50 MAG)
VIKING™ 1840 Series		KP2930-1	KP3046-100 (1.00 MAG) KP3046-125 (1.25 MAG) KP3046-150 (1.50 MAG) KP3046-175 (1.75 MAG) KP3046-200 (2.00 MAG) KP3046-225 (2.25 MAG) KP3046-250 (2.50 MAG)
VIKING™ 1740	KP3043-1	KP2930-1	
Industrial Passive™	KP2898-1	KP2930-1	KP3046-100 (1.00 MAG) KP3046-125 (1.25 MAG) KP3046-150 (1.50 MAG) KP3046-175 (1.75 MAG) KP3046-200 (2.00 MAG) KP3046-225 (2.25 MAG) KP3046-250 (2.50 MAG)

Retail Helmets



SHOWN: Red Fierce Welding Helmet

MODEL	OUTSIDE COVER LENS	INSIDE / OUTSIDE COVER LENS	SWEATBAND	CHEATER LENS (PER SIZE)
Darkfire Welding Helmet		KH778	KP2854-1	KP3046-100 (1.00 MAG) KP3046-125 (1.25 MAG) KP3046-150 (1.50 MAG) KP3046-175 (1.75 MAG) KP3046-200 (2.00 MAG) KP3046-225 (2.25 MAG) KP3046-250 (2.50 MAG)
Passive Welding Helmet	KH619		KP2854-1	KP3046-100 (1.00 MAG) KP3046-125 (1.25 MAG) KP3046-150 (1.50 MAG) KP3046-175 (1.75 MAG) KP3046-200 (2.00 MAG) KP3046-225 (2.25 MAG) KP3046-250 (2.50 MAG)
Grunge Welding Helmet		KH778	KP2930-1	KP3046-100 (1.00 MAG) KP3046-125 (1.25 MAG) KP3046-150 (1.50 MAG) KP3046-175 (1.75 MAG) KP3046-200 (2.00 MAG) KP3046-225 (2.25 MAG) KP3046-250 (2.50 MAG)
Flag Welding Helmet		KH778	KP2930-1	KP3046-100 (1.00 MAG) KP3046-125 (1.25 MAG) KP3046-150 (1.50 MAG) KP3046-175 (1.75 MAG) KP3046-200 (2.00 MAG) KP3046-225 (2.25 MAG) KP3046-250 (2.50 MAG)
Century Welding Helmet		KP3323-1	KP2930-1	KP3046-100 (1.00 MAG) KP3046-125 (1.25 MAG) KP3046-150 (1.50 MAG) KP3046-175 (1.75 MAG) KP3046-200 (2.00 MAG) KP3046-225 (2.25 MAG) KP3046-250 (2.50 MAG)
Shade 11 Welding Helmet		KP3323-1	KP2930-1	KP3046-100 (1.00 MAG) KP3046-125 (1.25 MAG) KP3046-150 (1.50 MAG) KP3046-175 (1.75 MAG) KP3046-200 (2.00 MAG) KP3046-225 (2.25 MAG) KP3046-250 (2.50 MAG)

Retail Helmets CONT.

MODEL	OUTSIDE COVER LENS	INSIDE / OUTSIDE COVER LENS	SWEATBAND	CHEATER LENS (PER SIZE)
Red Fierce Welding Helmet		KH778	KP2854-1	KP3046-100 (1.00 MAG) KP3046-125 (1.25 MAG) KP3046-150 (1.50 MAG) KP3046-175 (1.75 MAG) KP3046-200 (2.00 MAG) KP3046-225 (2.25 MAG) KP3046-250 (2.50 MAG)
Blue Fierce Welding Helmet		KH778	KP2930-1	KP3046-100 (1.00 MAG) KP3046-125 (1.25 MAG) KP3046-150 (1.50 MAG) KP3046-175 (1.75 MAG) KP3046-200 (2.00 MAG) KP3046-225 (2.25 MAG) KP3046-250 (2.50 MAG)
Oh Canada Welding Helmet		KH778	KP2930-1	KP3046-100 (1.00 MAG) KP3046-125 (1.25 MAG) KP3046-150 (1.50 MAG) KP3046-175 (1.75 MAG) KP3046-200 (2.00 MAG) KP3046-225 (2.25 MAG) KP3046-250 (2.50 MAG)
Skullsaw Welding Helmet		KH778	KP2930-1	KP3046-100 (1.00 MAG) KP3046-125 (1.25 MAG) KP3046-150 (1.50 MAG) KP3046-175 (1.75 MAG) KP3046-200 (2.00 MAG) KP3046-225 (2.25 MAG) KP3046-250 (2.50 MAG)
Bloodshot Welding Helmet		KH778	KP2930-1	KP3046-100 (1.00 MAG) KP3046-125 (1.25 MAG) KP3046-150 (1.50 MAG) KP3046-175 (1.75 MAG) KP3046-200 (2.00 MAG) KP3046-225 (2.25 MAG) KP3046-250 (2.50 MAG)
Accelerate Welding Helmet		KH778	KP2930-1	KP3046-100 (1.00 MAG) KP3046-125 (1.25 MAG) KP3046-150 (1.50 MAG) KP3046-175 (1.75 MAG) KP3046-200 (2.00 MAG) KP3046-225 (2.25 MAG) KP3046-250 (2.50 MAG)
Marquette Welding Helmet		KP3323-1	KP2930-1	KP3046-100 (1.00 MAG) KP3046-125 (1.25 MAG) KP3046-150 (1.50 MAG) KP3046-175 (1.75 MAG) KP3046-200 (2.00 MAG) KP3046-225 (2.25 MAG) KP3046-250 (2.50 MAG)
Eliminator Welding Helmet		KH778	KP2930-1	KP3046-100 (1.00 MAG) KP3046-125 (1.25 MAG) KP3046-150 (1.50 MAG) KP3046-175 (1.75 MAG) KP3046-200 (2.00 MAG) KP3046-225 (2.25 MAG) KP3046-250 (2.50 MAG)

Retail Helmets CONT.

MODEL	OUTSIDE COVER LENS	INSIDE / OUTSIDE COVER LENS	SWEATBAND	CHEATER LENS (PER SIZE)
Accelerate Welding Helmet		KH778	KP2930-1	KP3046-100 (1.00 MAG) KP3046-125 (1.25 MAG) KP3046-150 (1.50 MAG) KP3046-175 (1.75 MAG) KP3046-200 (2.00 MAG) KP3046-225 (2.25 MAG) KP3046-250 (2.50 MAG)
Black Glossy Welding Helmet		KH778	KP2930-1	KP3046-100 (1.00 MAG) KP3046-125 (1.25 MAG) KP3046-150 (1.50 MAG) KP3046-175 (1.75 MAG) KP3046-200 (2.00 MAG) KP3046-225 (2.25 MAG) KP3046-250 (2.50 MAG)
Camo Welding Helmet		KH778	KP2930-1	KP3046-100 (1.00 MAG) KP3046-125 (1.25 MAG) KP3046-150 (1.50 MAG) KP3046-175 (1.75 MAG) KP3046-200 (2.00 MAG) KP3046-225 (2.25 MAG) KP3046-250 (2.50 MAG)
Red Steel Welding Helmet		KH778	KP2930-1	KP3046-100 (1.00 MAG) KP3046-125 (1.25 MAG) KP3046-150 (1.50 MAG) KP3046-175 (1.75 MAG) KP3046-200 (2.00 MAG) KP3046-225 (2.25 MAG) KP3046-250 (2.50 MAG)
Blaze Welding Helmet		KH778	KP2930-1	KP3046-100 (1.00 MAG) KP3046-125 (1.25 MAG) KP3046-150 (1.50 MAG) KP3046-175 (1.75 MAG) KP3046-200 (2.00 MAG) KP3046-225 (2.25 MAG) KP3046-250 (2.50 MAG)
Lone Star Welding Helmet		KH778	KP2930-1	KP3046-100 (1.00 MAG) KP3046-125 (1.25 MAG) KP3046-150 (1.50 MAG) KP3046-175 (1.75 MAG) KP3046-200 (2.00 MAG) KP3046-225 (2.25 MAG) KP3046-250 (2.50 MAG)
Galaxis Welding Helmet		KH778	KP2930-1	KP3046-100 (1.00 MAG) KP3046-125 (1.25 MAG) KP3046-150 (1.50 MAG) KP3046-175 (1.75 MAG) KP3046-200 (2.00 MAG) KP3046-225 (2.25 MAG) KP3046-250 (2.50 MAG)

OmniShield™ Faceshields



SHOWN: Standard Faceshield

MODEL	REPLACEMENT LENS	SWEATBAND
OmniShield™ Faceshields	KP3755-1	KP3764-1

Recommended Replacement Guns

COMMERCIAL / LIGHT INDUSTRIAL WIRE FEED WELDERS

Machine Name	Gun Name	Gun Part #	Page
POWER MIG 140**	Magnum PRO 100L	K3080-1	12
POWER MIG 140C**	Magnum PRO 100L	K3080-1	12
POWER MIG 140MP	Magnum PRO 100L	K530-7	12
POWER MIG 140T**	Magnum PRO 100L	K3080-1	12
POWER MIG 180**	Magnum PRO 100L	K3080-1	12
Power MIG 180 C (AU)	Magnum 100L	K530-6	12
POWER MIG 180C**	Magnum PRO 100L	K3080-1	12
POWER MIG 180T**	Magnum PRO 100L	K3080-1	12
POWER MIG 180 Dual**	Magnum PRO 100L	K3080-1	12
POWER MIG 200***	Magnum 250L	K3081-2	13
POWER MIG 210	Magnum PRO 175L	K4076-1	12
POWER MIG 215***	Magnum 250L	K3081-2	13
POWER MIG 216***	Magnum PRO 250L	K3081-2	13
POWER MIG 255***	Magnum 250L	K3081-2	13
POWER MIG 255XT***	Magnum PRO 250L	K3081-2	13
POWER MIG 256***	Magnum PRO 250L	K3081-2	13
Power MIG 260	Magnum PRO 250L	K3081-2	13

* Will also need K466-1 connector kit.

** Earlier models were sold with the K530-6 Magnum 100L.

*** Earlier models were sold with the K533-7 Magnum 250L.

**** Earlier models were sold with the K470-2 Magnum 300.

Magnum® PRO Gun Connector Kits

Manufacturer	Wire Feeder Model	Magnum® PRO Curve™	Magnum® PRO Barrel	Magnum® PRO Barrel	Magnum® PRO	Magnum® PRO	K126™ PRO Innershield®	
		200/300/400	250/350/450	550	Fume 350	Fume 550	For Small Feeder Bushings	For Large Feeder Bushings
Lincoln Electric®	LN-7 Series, LN-8, LN-9, LN-25 [Up to .052 in. (1.4 mm) Wire]	K466-1	K466-1	K613-1	K466-1	K613-1	K466-1	K613-1
	LN-8, LN-9 Series, LN-25 [1/16 in. (1.6 mm) and Larger Wire]	K466-8	K466-8	K613-6	K466-8	K613-6	K466-8	K613-6
	Activ8™, Activ8X, Flexfeed® 74, Flexfeed™ 84, LF-72, LF-74 Series, LN-25 PRO, LN-25X, Power Feed® 84	K466-10	K466-10	K613-7 ^[3]	K466-10	K613-7 ^[3]	K466-10	K613-7
	Power Feed® 10M, 15M, 25M, LN-10, DH-10, STT10, LN-15	K466-10	K466-10	K613-7 ^[3]	K466-10	K613-7 ^[3]	K466-10	K613-7
	POWER MIG® Series and Power Wave® C300	K466-6	K466-6	NA	K466-6	NA	K466-6	
Tweco®	Adapted No. 2, No. 3, No. 4 Guns [K466], No. 5 [K613]	K466-2	K466-2	K613-2	K466-2	K613-2	K466-2	K613-2
Miller®	Intellimatic, Sidekick, D-51A, Porto-Mig Millermatic 130, 200, MM-35, S-42GL, S-52A, S-54A, Swing Arc-Dual, Swing Arc-Single S-32S, 52D, 54D, 54E, 60 Series	K466-3	K466-3	K613-3	K466-3	K613-3	K466-3	K613-3



[3] K1500-3 Gun Receiver Bushing is required for Power Feed® 10 series, LF series and LN-25 PRO wire feeders.

Magnum[®] PRO 100L & 175L Gun Expendables

Expendable Parts

Magnum PRO expendable parts are interchangeable. Interchanging expendable parts will require gun tube insulator and gas diffuser changes. Customers may choose to change expendable parts to standardize stocking parts or to make the gun more compact for tight spaces.



CONTACT TIPS

Wire Diameter		Tapered Tip	
in	(mm)	Pkg. Qty. -10	Pkg. Qty.-100
0.025	[0.6]	KP2744-025T	KP2744-025T-B100
0.030	[0.8]	KP2744-030T	KP2744-030T-B100
0.035	[0.9]	KP2744-035T	KP2744-035T-B100
0.040	[1.0]	KP2744-040T	KP2744-040T-B100
0.045	[1.2]	KP2744-045T	KP2744-045T-B100

GAS DIFFUSER



Pkg. Qty.	Thread-on
1	KP3076-1
25	KP3076-1-B25

GASLESS NOZZLE



Pkg. Qty.	Part Number
1	KP3084-1
25	KP3084-1-B25

GUN TUBE



Gun Tubes	60° Gun Tube
Magnum PRO 100L	KP3082-60
Magnum PRO 175L	KP4087-1

GAS NOZZLE¹



Nozzle	Pkg. Qty.	Gas Nozzle Diameter-in (mm)	
		3/8 [9.5]	1/2 [12.7]
Flush	1	KP3075-1-38F	KP3075-1-50F
	25	KP3075-1-38F-B25	KP3075-1-50F-B25
1/4 in [6.4 mm] Stickout	1	KP3075-1-38S	KP3075-1-50S
	25	KP3075-1-38S-B25	KP3075-1-50S-B25

GUN LINER



Cable Length	Pkg Qty	Steel	Steel	Aluminum
		0.023-0.035 in (0.6-0.9 mm)	0.035-0.045 in (0.9-1.2 mm)	0.035 in (0.9 mm)
15 ft (4.5 m)	1	KP35-40-15 ³	KP45-40-15	KP1959-1 ²
	10	KP35-40-15-B10	KP45-40-15-B10	-

¹⁾ When using nozzle sizes less than 5/8 in., tapered tips are recommended.

²⁾ Recommended for aluminum wire welding, recommended maximum cable length for aluminum is 10 ft. (3.0 m)


³⁾ Standard on Magnum PRO 100L

Magnum[®] PRO 250L Gun Expendables

Expendable Parts


Magnum PRO expendable parts are interchangeable. Interchanging expendable parts will require gun tube insulator and gas diffuser changes. Customers may choose to change expendable parts to standardize stocking parts or to make the gun more compact for tight spaces.

CONTACT TIPS




Wire Diameter - in (mm)	Standard	Standard	Tapered Tip	Tapered Tip
	Pkg. Qty. -10	Pkg. Qty.-100	Pkg. Qty.-10	Pkg. Qty-100
0.025 [0.6]	KP2744-025	KP2744-025-B100	KP2744-025T	KP2744-025T-B100
0.030 [0.8]	KP2744-030	KP2744-030-B100	KP2744-030T	KP2744-030T-B100
0.035 [0.9]	KP2744-035	KP2744-035-B100	KP2744-035T	KP2744-035T-B100
0.040 [1.0]	KP2744-040	KP2744-040-B100	KP2744-040T	KP2744-040T-B100
0.045 [1.2]	KP2744-045	KP2744-045-B100	KP2744-045T	KP2744-045T-B100

GAS DIFFUSER




Pkg. Qty.	Thread-on
1	KP2746-1
25	KP2746-1-B25

GUN TUBE INSULATOR




Pkg. Qty.	Part Number
1	KP2773-2
25	KP2773-2-B25

GUN TUBE




Gun Tubes	60° Gun Tube	45° Gun Tube
Magnum PRO 250L	KP3078-60	KP3078-45

GAS NOZZLE¹ IN (MM)



Nozzle	Pkg. Qty.	3/8 [9.5]	1/2 [12.7]	5/8 [15.9]
1/8 [3.2] Recess	1	KP2742-1-38R	KP2742-1-50R	KP2742-1-62R
	25	KP2742-1-38R-B25	KP2742-1-50R-B25	KP2742-1-62R-B25
Flush	1	KP2742-1-38F	KP2742-1-50F	KP2742-1-62F
	25	KP2742-1-38F-B25	KP2742-1-50F-B25	KP2742-1-62F-B25
1/8 [3.2] Stickout	1	KP2742-1-38S	KP2742-1-50S	KP2742-1-62S
	25	KP2742-1-38S-B25	KP2742-1-50S-B25	KP2742-1-62S-B25

GUN LINER



Cable Length	Pkg Qty	Steel			Aluminum
15 ft [4.5 m]	1	KP42-25-15	KP42-3035-15	KP42-4045-15 ¹	KP44N-3545-15 ²
	10	-	-	KP42-4045-15-B10	-

[1] Standard on Magnum PRO 250L

[2] Recommended for aluminum wire welding, recommended maximum cable length for aluminum is 10 ft. (3.0 m)

Magnum[®] PRO 350A Gun Expendables

Expendable Parts

Magnum PRO expendable parts are interchangeable. Interchanging expendable parts will require gun tube insulator and gas diffuser changes. Customers may choose to change expendable parts to standardize stocking parts or to make the gun more compact for tight spaces.



CONTACT TIPS 350A

Wire Diameter - in (mm)	Standard	Standard	Tapered Tip	Tapered Tip
	Pkg. Qty. -10	Pkg. Qty.-100	Pkg. Qty.-10	Pkg. Qty-100
0.025 [0.6]	KP2744-025	KP2744-025-B100	KP2744-025T	KP2744-025T-B100
0.030 [0.8]	KP2744-030	KP2744-030-B100	KP2744-030T	KP2744-030T-B100
0.035 [0.9]	KP2744-035	KP2744-035-B100	KP2744-035T	KP2744-035T-B100
0.040 [1.0]	KP2744-040	KP2744-040-B100	KP2744-040T	KP2744-040T-B100
0.045 [1.2]	KP2744-045	KP2744-045-B100	KP2744-045T	KP2744-045T-B100
0.052 [1.3]	KP2744-052	KP2744-052-B100	KP2744-052T	KP2744-052T-B100
1/16 [1.6]	KP2744-116	KP2744-116-B100	KP2744-116T	KP2744-116T-B100
5/64 [2.0]	KP2744-564	KP2744-564-B100	KP2744-564T	KP2744-564T-B100



GAS DIFFUSER

Pkg. Qty.	Thread-on Standard Duty	Thread-on Light Duty	Thread-on Extended Reach	Slip-on
1	KP2746-1	KP3141-1 ⁽¹⁾	KP3360-1	KP2746-2
25	KP2746-1-B25	KP3141-1-B25 ⁽¹⁾	KP3360-1-B25	KP2746-2-B25

(1) For use with Magnum[®] PRO 100L KP3075-1-XXX nozzles only



TRIGGER KIT

Description	Part Number
Locking Trigger Kit	KP2870-1

GUN TUBE INSULATOR 350A

Pkg. Qty.	Part Number
1	KP2773-2
25	KP2773-2-B25



Bottleneck Gas Nozzle for up to 350A Thread-on 1/8" [3.2 mm] Recessed



Gas Nozzle for up to 350A Thread-on 1/8" [3.2 mm] Recessed



Extended Reach Gas Nozzle for up to 350A Thread-on 1/8" [3.2 mm] Recessed

GAS NOZZLE 350A

		Gas Nozzle Diameter in. (mm)						
		Nozzle	Pkg. Qty.	Standard 3/8 [9.5]	Standard 1/2 [12.7]	Extended Reach 1/2 [12.7]	Bottleneck 1/2 [12.7]	Standard 5/8 [15.9]
Thread-on	1/8 [3.2] Recess		1 25	KP2742-1-38R KP2742-1-38R-B25	KP2742-1-50R KP2742-1-50R-B25	KP3359-1-50R KP3359-1-50R-B25	KP3160-1-50R KP3160-1-50R-B25	KP2742-1-62R KP2742-1-62R-B25
	Flush		1 25	KP2742-1-38F KP2742-1-38F-B25	KP2742-1-50F KP2742-1-50F-B25	— —	KP3160-1-50F KP3160-1-50F-B25	KP2742-1-62F KP2742-1-62F-B25
	1/8 [3.2] Stickout		1 25	KP2742-1-38S KP2742-1-38S-B25	KP2742-1-50S KP2742-1-50S-B25	— —	KP3160-1-50S KP3160-1-50S-B25	KP2742-1-62S KP2742-1-62S-B25
Slip-on	1/8 [3.2] Recess		1 25	— —	KP2742-2-50R KP2742-2-50R-B25	— —	— —	KP2742-2-62R KP2742-2-62R-B25
	Flush		1 25	— —	KP2742-2-50F KP2742-2-50F-B25	— —	— —	KP2742-2-62F KP2742-2-62F-B25
	1/8 [3.2] Stickout		1 25	— —	KP2742-2-50S KP2742-2-50S-B25	— —	— —	KP2742-2-62S KP2742-2-62S-B25

Magnum[®] PRO 350A Gun Expendables

All Magnum PRO HDE gun tubes will fit on any Magnum PRO HDE gun. However, the 250A, 350A, and 450A gun tubes may restrict wire diameter sizes. Please reference the chart below.

PRO HDE GUN TUBES

45° Gun Tube	Length in (mm)	60° Gun Tube	Length in (mm)	Wire Diameter Range in (mm)
KP4693-45	5.0 [127]	KP4693-60 ⁽¹⁾	4.6 [117]	0.035 - 5/64 [0.9-2.0]
KP4694-45	6.3 [160]	KP4694-60 ⁽²⁾	5.8 [147]	0.035 - 5/64 [0.9-2.0]
KP4695-45	7.8 [198]	KP4695-60 ⁽³⁾	7.4 [188]	0.035 - 5/64 [0.9-2.0]
KP4696-45	8.6 [218]	KP4696-60 ⁽⁴⁾⁽⁵⁾	8.0 [203]	0.035 - 1/8 [0.9-3.2]
KP4696-45SN	7.8 [198]	KP4696-60SN ⁽⁵⁾	7.3 [185]	0.035 - 1/8 [0.9-3.2]

(1) Comes standard on the 250A gun.

(2) Comes standard on the 350A gun.

(3) Comes standard on the 450A gun.

(4) Comes standard on the 550A gun.

(5) The 450A gun can be adapted to run up to 1/8 in. wire by using a KP45 series liner, a K613 series backend, and a 550A or 550A short gooseneck.

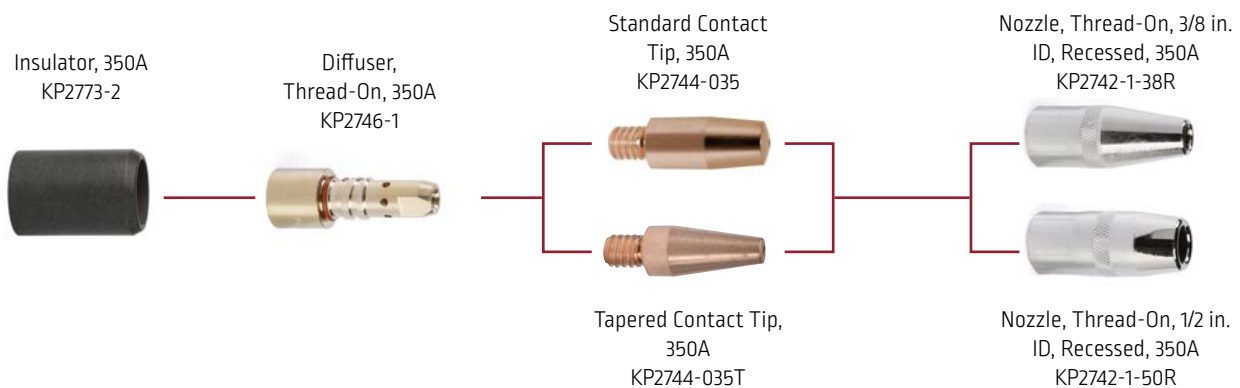
The original 450A gooseneck cannot be used on wire larger than 5/64 in.

GUN TUBE²

Gun Tubes	45° Gun Tube	60° Gun Tube	82° Gun Tube	Flexible
Magnum [®] PRO Curve [™] 200	KP2924-45	KP2924-60	—	—
Magnum [®] PRO Curve [™] 300	KP2925-45	KP2925-60	—	—
Magnum [®] PRO Curve [™] 400	KP2926-45	KP2926-60 / KP2926-60L ⁽³⁾⁽⁴⁾	KP2926-82	KP3200-1

(3) Extended version.

(4) When using an extended gun tube and extended gas nozzle, a 25 ft. liner should be used.



Magnum[®] PRO Water-Cooled Gun Expendables

Wire Diameter - in (mm)	Standard	Standard	Extended Life	Extended Life
	Pkg. Qty. -10	Pkg. Qty.-100	Pkg. Qty.-10	Pkg. Qty-100
0.035 (0.9)	KP2745-035	KP2745-035-B100	KP2745-035R	KP2745-035R-B100
0.040 (1.0)	KP2745-040	KP2745-040-B100	KP2745-040R	KP2745-040R-B100
0.045 (1.2)	KP2745-045	KP2745-045-B100	KP2745-045R	KP2745-045R-B100
0.052 (1.3)	KP2745-052	KP2745-052-B100	KP2745-052R	KP2745-052R-B100
1/16 (1.6)	KP2745-116	KP2745-116-B100	KP2745-116R	KP2745-116R-B100
0.068-0.072 (1.7-1.8)	KP2745-072	KP2745-072-B100	KP2745-072R	KP2745-072R-B100
5/64 (2.0)	KP2745-564	KP2745-564-B100	KP2745-564R	KP2745-564R-B100

GAS DIFFUSER

Pkg. Qty.	Part Number
1	KP4380-1
25	KP4380-1-B25

GUN TUBE

Description	Degree	Part Number
Water Cooled, 500A	45°	KP4526-45 ⁽¹⁾
Water Cooled, 500A	60°	KP4526-60 ⁽¹⁾
Water Cooled, 400A	45°	KP4527-45 ⁽²⁾
Water Cooled, 400A	60°	KP4527-45 ⁽²⁾

⁽¹⁾For use with Magnum PRO Water-Cooled 500A Gun only.

⁽²⁾For use with MagnumPRO Water-Cooled 400A Gun only.

GAS DIFFUSER

Pkg. Qty.	Part Number
1	KP4380-1
25	KP4380-1-B25

NOZZLES

Nozzle Type	Quantity	5/8 in. ID	1/2 in. ID	3/4 in. ID
1/8 in. Recess	1	KP4523-1-62R	KP4523-1-50R	KP4523-1-75R
	25	KP4523-1-62R-B25	KP4523-1-50R-B25	KP4523-1-75R-B25
Flush	1	KP4523-1-62F	KP4523-1-50F	KP4523-1-75F
	25	KP4523-1-62F-B25	KP4523-1-50F-B25	KP4523-1-75F-B25
1/8 in. Stickout	1	KP4523-1-62S	KP4523-1-50S	KP4523-1-75S
	25	KP2743-1-62S-B25	KP4523-1-50S-B25	KP4523-1-75S-B25

LINERS, 15 FT.

Wire Diameter, in. (mm)	Product Number
0.035-0.045 (0.9-1.2)	KP44-3545-15
.052-1/16 (1.3-1.6)	KP44-116-15
1/16-5/64 (1.6-2.0)	KP44-564-15

Magnum® PRO Barrel & Curve 550A Gun Expendables

Expendable Parts

Magnum PRO expendable parts are interchangeable. Interchanging expendable parts will require gun tube insulator and gas diffuser changes. Customers may choose to change expendable parts to standardize stocking parts or to make the gun more compact for tight spaces.



CONTACT TIPS

Wire Diameter - in (mm)	Standard	Standard	Extended Life	Extended Life
	Pkg. Qty. -10	Pkg. Qty.-100	Pkg. Qty.-10	Pkg. Qty-100
0.035 (0.9)	KP2745-035	KP2745-035-B100	KP2745-035R	KP2745-035R-B100
0.040 (1.0)	KP2745-040	KP2745-040-B100	KP2745-040R	KP2745-040R-B100
0.045 (1.2)	KP2745-045	KP2745-045-B100	KP2745-045R	KP2745-045R-B100
0.052 (1.3)	KP2745-052	KP2745-052-B100	KP2745-052R	KP2745-052R-B100
1/16 (1.6)	KP2745-116	KP2745-116-B100	KP2745-116R	KP2745-116R-B100
0.068-0.072 (1.7-1.8)	KP2745-072	KP2745-072-B100	KP2745-072R	KP2745-072R-B100
5/64 (2.0)	KP2745-564	KP2745-564-B100	KP2745-564R	KP2745-564R-B100
3/32 (2.4) ⁽¹⁾	KP2745-332	KP2745-332-B100	KP2745-332R	KP2745-332R-B100
7/64 (2.8) ⁽¹⁾	KP2745-764	KP2745-764-B100	KP2745-764R	KP2745-764R-B100
1/8 (3.2) ⁽¹⁾	KP2745-18	KP2745-18-B100	-	-

(1) 550 only



TRIGGER KIT



GAS DIFFUSER 550A

Pkg. Qty.	Thread-on Standard Duty	Thread-on 1/4 in. Recess	Slip-on
1	KP2747-1	KP3155-1	KP2747-2
25	KP2747-1-B25	KP3155-1-B25	KP2747-2-B25

Description	Part Number
Locking Trigger Kit	KP2870-1

GUN TUBE INSULATOR 550A

Pkg. Qty.	Part Number
1	KP2773-1
25	KP2773-1-B25



GAS NOZZLE 550A

	Nozzle	Pkg. Qty.	Gas Nozzle Diameter - in. (mm)		
			Standard 0.625 [15.9]	Bottleneck 0.625 [15.9]	Standard 0.750 [19]
Thread-on	1/8 (3.2) Recess	1 25	KP2743-1-62R KP2743-1-62R-B25	KP3161-1-62R KP3161-1-62R-B25	KP2743-1-75R KP2743-1-75R-B25
	Flush	1 25	KP2743-1-62F KP2743-1-62F-B25	KP3161-1-62F KP3161-1-62F-B25	KP2743-1-75F KP2743-1-75F-B25
	1/8 (3.2) Stickout	1 25	KP2743-1-62S KP2743-1-62S-B25	KP3161-1-62S KP3161-1-62S-B25	KP2743-1-75S KP2743-1-75S-B25
Slip-on	1/8 (3.2) Recess	1 25	KP2743-2-62R KP2743-2-62R-B25	- -	KP2743-2-75R KP2743-2-75R-B25
	Flush	1 25	KP2743-2-62F KP2743-2-62F-B25	- -	KP2743-2-75F KP2743-2-75F-B25
	1/8 (3.2) Stickout	1 25	KP2743-2-62S KP2743-2-62S-B25	- -	KP2743-2-75S KP2743-2-75S-B25



GUN TUBE 450A & 550A

	450 Gun Tube	600 Gun Tube	820 Gun Tube	1800 Gun Tube
Magnum PRO 450 Barrel	KP2868-45	KP2868-60	KP2868-82	KP2868-180
Magnum PRO 550 Barrel	KP2869-45	KP2869-60 KP2869-60SN ⁽²⁾ / KP2869-60L ⁽³⁾⁽⁴⁾	---	KP2869-180



(2) Short neck for up to 3/32 in. wire.

(3) Extended version.

(4) When using an extended gun tube and extended gas nozzle, a 25 ft. liner should be used.



Magnum® PRO Fume Gun Expendables

Both 350 and 550 Fume Guns use Magnum® PRO 550 expendables.



CONTACT TIPS

Wire Diameter - in (mm)	Standard	Standard	Extended Life	Extended Life
	Pkg. Qty. -10	Pkg. Qty.-100	Pkg. Qty.-10	Pkg. Qty-100
0.035 [0.9]	KP2745-035	KP2745-035-B100	KP2745-035R	KP2745-035R-B100
0.040 [1.0]	KP2745-040	KP2745-040-B100	-	-
0.045 [1.2]	KP2745-045	KP2745-045-B100	KP2745-045R	KP2745-045R-B100
0.052 [1.3]	KP2745-052	KP2745-052-B100	KP2745-052R	KP2745-052R-B100
1/16 [1.6]	KP2745-116	KP2745-116-B100	KP2745-116R	KP2745-116R-B100
0.068-0.072 [1.7-1.8]	KP2745-072	KP2745-072-B100	KP2745-072R	KP2745-072R-B100
5/64 [2.0]	KP2745-564	KP2745-564-B100	KP2745-564R	KP2745-564R-B100
3/32 [2.4] ⁽¹⁾	KP2745-332	KP2745-332-B100	KP2745-332R	KP2745-332R-B100
7/64 [2.8] ⁽¹⁾	KP2745-764	KP2745-764-B100	KP2745-764R	KP2745-764R-B100
1/8 [3.2] ⁽¹⁾	KP2745-18	KP2745-18-B100	-	-

(1) 550 only



GAS DIFFUSER 550A

Pkg. Qty.	Thread-on Standard Duty	Thread-on 1/4 in. Recess	Slip-on
1	KP2747-1	KP3155-1	KP2747-2
25	KP2747-1-B25	KP3155-1-B25	KP2747-2-B25

GUN TUBE INSULATOR 550A



Pkg. Qty.	Part Number
1	KP2773-1
25	KP2773-1-B25



GAS NOZZLE 550A

		Gas Nozzle Diameter in. (mm)				
		Nozzle	Pkg. Qty.	Standard 0.625 [15.9]	Bottleneck 0.625 [15.9]	Standard 0.750 [19]
Thread-on	1/8 [3.2] Recess		1 25	KP2743-1-62R KP2743-1-62R-B25	KP3161-1-62R KP3161-1-62R-B25	KP2743-1-75R KP2743-1-75R-B25
	Flush		1 25	KP2743-1-62F KP2743-1-62F-B25	KP3161-1-62F KP3161-1-62F-B25	KP2743-1-75F KP2743-1-75F-B25
	1/8 [3.2] Stickout		1 25	KP2743-1-62S KP2743-1-62S-B25	KP3161-1-62S KP3161-1-62S-B25	KP2743-1-75S KP2743-1-75S-B25
Slip-on	1/8 [3.2] Recess		1 25	KP2743-2-62R KP2743-2-62R-B25	- -	KP2743-2-75R KP2743-2-75R-B25
	Flush		1 25	KP2743-2-62F KP2743-2-62F-B25	- -	KP2743-2-75F KP2743-2-75F-B25
	1/8 [3.2] Stickout		1 25	KP2743-2-62S KP2743-2-62S-B25	- -	KP2743-2-75S KP2743-2-75S-B25

TRIGGER KIT

Description	Part Number
Locking Trigger Kit	KP2870-1



SMOKE EXTRACTOR NOZZLES

Nozzle	Part Number
GMAW Fume Extractor Nozzle	KP2871-1
FCAW Fume Extractor Nozzle	KP2872-1 ⁽¹⁾

(1) Standard with gun

Magnum® Gun Contact Tips

CONTACT TIPS 100 A (MAGNUM® 100L)

Wire Diameter in. (mm)	Standard		Tapered
	Pkg. Qty. - 10	Pkg. Qty. - 100	Pkg. Qty. - 10
0.025 [0.6]	KP11-25	KP11-25-B100	KP11T-25
0.030 [0.8]	KP11-30	KP11-30-B100	KP11T-30
0.035 [0.9]	KP11-35	KP11-35-B100	KP11T-35
0.035 [0.9] Aluminum	KP2078-1B1 ⁽¹⁾	---	---
0.045 [1.2]	KP11-45	KP11-45-B100	KP11T-45



⁽¹⁾ Recommended for aluminum wire welding.

CONTACT TIPS 200 A AND 250 A (MAGNUM® 200, MAGNUM® 250L, MAGNUM® 250SP)

Wire Diameter in. (mm)	Standard		Heavy Duty		Tapered		Notched
	Pkg. Qty. - 10	Pkg. Qty. - 100	Pkg. Qty. - 10	Pkg. Qty. - 100	Pkg. Qty. - 10	Pkg. Qty. - 100	Pkg. Qty. - 10
0.025 [0.6]	KP14-25	KP14-25-B100	---	---	KP14T-25	---	---
0.030 [0.8]	KP14-30	KP14-30-B100	---	---	KP14T-30	KP14T-30-B100	KP2010-3B1 ⁽¹⁾
0.035 [0.9]	KP14-35	KP14-35-B100	KP14H-35	KP14H-35-B100	KP14T-35	KP14T-35-B100	KP2010-4B1 ⁽¹⁾
0.040 [1.0]	KP14-40	---	KP14H-40	KP14H-40-B100	KP14T-40	KP14T-40-B100	---
0.045 [1.2]	KP14-45	KP14-45-B100	KP14H-45	KP14H-45-B100	KP14T-45	KP14T-45-B100	---
3/64 [1.2]	KP14A-364 ⁽¹⁾	KP14A-364-B100 ⁽¹⁾	KP14AH-364 ⁽¹⁾	KP14AH-364-B100 ⁽¹⁾	---	---	KP2010-5B1 ⁽¹⁾

⁽¹⁾ Recommended for aluminum wire welding.

CONTACT TIPS 300 A AND 400 A (MAGNUM® 300 & MAGNUM® 400)

Wire Diameter in. (mm)	Standard		Heavy Duty		Tapered		Notched
	Pkg. Qty. - 10	Pkg. Qty. - 100	Pkg. Qty. - 10	Pkg. Qty. - 100	Pkg. Qty. - 10	Pkg. Qty. - 100	Pkg. Qty. - 10
0.025 [0.6]	KP14-25	KP14-25-B100	---	---	KP14T-25	---	---
0.030 [0.8]	KP14-30	KP14-30-B100	---	---	KP14T-30	KP14T-30-B100	KP2010-3B1 ⁽¹⁾
0.035 [0.9]	KP14-35	KP14-35-B100	KP14H-35	KP14H-35-B100	KP14T-35	KP14T-35-B100	KP2010-4B1 ⁽¹⁾
0.040 [1.0]	KP14-40	---	KP14H-40	KP14H-40-B100	KP14T-40	KP14T-40-B100	---
0.045 [1.2]	KP14-45	KP14-45-B100	KP14H-45	KP14H-45-B100	KP14T-45	KP14T-45-B100	---
3/64 [1.2]	KP14A-364 ⁽¹⁾	KP14A-364-B100 ⁽¹⁾	KP14AH-364 ⁽¹⁾	KP14AH-364-B100 ⁽¹⁾	---	---	KP2010-5B1 ⁽¹⁾
0.052 [1.3]	KP14-52	KP14-52-B100	KP14H-52	KP14H-52-B100	KP14T-52	KP14T-52-B100	---
1/16 [1.6]	KP14-116	KP14-116-B100	KP14H-116	KP14H-116-B100	KP14T-116	---	---
5/64 [2.0]	KP14-564	---	KP14H-564	---	---	---	---

⁽¹⁾ Recommended for aluminum wire welding.

CONTACT TIPS 500 A (MAGNUM® 550)

Wire Diameter in. (mm)	Solid Wire, Heavy Duty Pkg. Qty. - 10
0.035 [0.9]	KP15H-35
0.045 [1.2]	KP15H-45
0.052 [1.3]	KP15H-52
1/16 [1.6]	KP15H-116
5/64 [2.0]	KP15H-564
3/32 [2.4]	KP15H-332

CONTACT TIPS 600 A

Wire Diameter in. (mm)	Heavy Duty	
	Pkg. Qty. - 10	Pkg. Qty. - 100
0.035 [0.9]	KP16S-35	---
0.045 [1.2]	KP16S-45	---
0.052 [1.3]	KP16S-52	---
1/16 [1.6]	KP16S-116	KP16S-116-B100
5/64 [2.0]	KP16S-564	KP16S-564-B100
3/32 [2.4]	KP16S-332	KP16S-332-B100
7/64 [2.8]	KP16S-764	---
1/8 [3.2]	KP16S-18	---

Magnum[®] Gun Gas Nozzles



Coarse Thread
Gas Nozzle



Adjustable Slip-On Gas
Nozzle

GAS NOZZLES 100 A (MAGNUM[®] 100L)

Nozzle	Package Quantity	0.37 Nozzle Diameter	0.50 Nozzle Diameter	0.625 Nozzle Diameter
Fixed Flush	1	-	KP21-50-F	-
Fixed Recessed	1	KP21T-37	KP21T-50	KP21T-62
Gasless Nozzle	1	KP1939-1	-	-
Spot Nozzle	1	-	-	KP21-62-FAS

GAS NOZZLES 200 A (MAGNUM[®] 200, MAGNUM[®] 250L, & MAGNUM[®] 250SP)

Nozzle	Package Quantity	.38 Nozzle Diameter	.50 Nozzle Diameter	.62 Nozzle Diameter
Adjustable Slip-On	1	KP22-37	KP22-50	KP22-62
Adjustable Slip-On	25	KP22-37-B25	KP22-50-B25	KP22-62-B25
Gasless Nozzle	1	KP1947-1	KP1947-1	KP1947-1
Spot Nozzle	1	KP21-62-FAS	KP21-62-FAS	KP21-62-FAS

GAS NOZZLES 300 A AND 400 A (MAGNUM[®] 300 & MAGNUM[®] 400)

Nozzle	Package Quantity	0.38 Nozzle Diameter	0.50 Nozzle Diameter	0.62 Nozzle Diameter	0.75 Nozzle Diameter
Adjustable Slip-On	1	-	KP24A-50	KP24A-62	-
Adjustable Slip-On	25	-	KP24A-50-B25	KP24A-62-B25	-
Slip-On Recessed	1	KP24A-37-SS	KP24A-SS	KP24A-62-SS	-
Slip-On Recessed	25	-	-	KP24A-62-SS-B25	-
Coarse Thread / Tip Recessed 1/8 in.	1	-	-	KP24CT-62-S	KP24CT-75-S
Coarse Thread / Tip Recessed 1/8 in.	25	-	-	KP24CT-62-S-B25	-
Coarse Thread / Tip Recessed 1/4 in.	1	-	-	KP24CT-62-R	KP24CT-75-R
Coarse Thread / Tip Recessed 1/4 in.	25	-	-	KP24CT-62-R-B25	-
Fixed Recessed	1	KP23-37	KP23-50	KP23-62	KP23-75
Fixed Recessed	25	KP23-37-B25	KP23-50-B25	KP23-62-B25	-
Fixed Tapered	1	KP23T-37	-	-	-
Fixed Tapered	25	KP23T-37-B25	-	-	-
Fixed Heavy Duty	1	-	-	KP23H-62	-
Fixed Heavy Duty	25	-	-	KP23H-62-B25	-
Fixed Flush	1	-	KP23-50F	KP23H-62F	-
Fixed Flush	25	-	KP23-50F-B25	KP23H-62F-B25	-

GAS NOZZLES 600 A (MAGNUM[®] 550)

Nozzle	Package Quantity	0.62 Nozzle Diameter	0.75 Nozzle Diameter
Coarse Thread / Tip Recessed 1/8 in.	1	KP26CT-62	KP26CT-75
Coarse Thread / Tip Recessed 1/8 in.	25	-	KP26CT-75-B25
Coarse Thread / Tip Recessed 1/4 in.	1	KP26CT-62-R	KP26CT-75-R
Coarse Thread / Tip Recessed 1/4 in.	1	-	KP261-75

Magnum® Gun Insulators and Gas Diffusers

INSULATORS



Magnum® 200
Magnum® 250L
Magnum® 250SP

Magnum® 300
Magnum® 400

Magnum® 550

Nozzle	Package Quantity	200 Amp	300 & 400 Amp	600 Amp
Adjustable Slip-On	1	KP32	-	-
Adjustable Slip-On	25	KP32-B25	-	-
Adjustable Slip-On	1	-	KP34A	-
Adjustable Slip-On	25	-	KP34A-B25	-
Coarse Thread	1	-	KP34CT	-
Coarse Thread	25	-	KP34CT-B25	-
Coarse Thread	1	-	-	KP36CT
Coarse Thread	25	-	-	KP36CT-B25

GAS DIFFUSERS 100 A (MAGNUM® 100L)



Wire Size	Item Number
.025-.045 in. (0.6-1.2 mm)	KP35-50

GAS DIFFUSERS 200 A (MAGNUM® 200)



Wire Size	Package Quantity	Item Number
.025-.030 in. (0.6-0.8 mm)	1	KP52-23
.035-.045 (0.9-1.2 mm)	1	KP52FN
	25	KP52FN-B25
.025-.045 (0.6-1.2 mm)	1	KP2051-1 ⁽²⁾ or KP52FN ⁽¹⁾
	25	KP2051-1B1 ⁽²⁾ or KP52FN-B25 ⁽¹⁾

GAS DIFFUSERS 250 A (MAGNUM® 250L & MAGNUM® 250SP)



Wire Size	Package Quantity	For Adjustable Slip-On Nozzle	For Fixed Nozzle	Specialty
.025-.030 in. (0.6-0.8 mm)	1	KP52-23	KP2051-1	KP2051-1
.035-.045 (0.9-1.2 mm)	1	KP52	KP52FN	-
	25	KP52-B25	KP52FN-B25	-
.025-.045 (0.6-1.2 mm)	1	-	KP52FN	KP2051-1 ⁽³⁾
	25	-	-	KP2051-1B1

⁽¹⁾ Permits use of 300 and 400 amp fixed nozzles with 200 amp gun and cable. ⁽²⁾ Permits use of 100 amp contact tips with 200 amp gun and cable. ⁽³⁾ Permits use of 100 amp contact tips and nozzles with Magnum® 250L gun tube.

GAS DIFFUSERS 300 A AND 400 A (MAGNUM® 300 & MAGNUM® 400)



Wire Size	Package Quantity	Item Number
.025-.030 in. (0.6-0.8 mm)	1	KP2024-2 ⁽¹⁾
	25	-
.035-5/64 in. (0.9-2.0 mm)	1	KP54A
	25	KP54A-B25

GAS DIFFUSERS 600 A (MAGNUM® 550)



Wire Size	Package Quantity	Item Number
.035-1/16 in. (0.9-1.6 mm)	1	KP56S-SW
	25	-
5/64-1/8 (2.0-3.2 mm)	1	KP56S-H
	25	KP56S-H-B10

Magnum® Gun Cable Liners and Gun Tubes

MAGNUM® 100L

ft (m)	0.035 (0.9) Aluminum ⁽¹⁾	0.025-0.035 (0.6-0.9)	0.035-0.045 (0.9-1.2)
15 (4.5)	KP1959-1	KP35-40-15	KP45-40-15

MAGNUM® 200, 250L and 250SP - in (mm)

ft (m)	0.025-0.030 (0.6-0.8)	0.030-0.035 (0.8-0.9)	0.035-0.045 (0.9-1.2)	0.035-3/64 (0.9-1.2) Aluminum ⁽¹⁾
15 (4.5)	KP42-25-15	KP42-3035-15	KP42-4045-15	KP44N-3545-15 ⁽¹⁾

MAGNUM® 300 and 400 - in (mm)

ft (m)	0.025-0.030 (0.6-0.8)	0.035-0.045 (0.9-1.2)	0.035-3/64 (0.9-1.2) Aluminum ⁽¹⁾	0.052-1/16 (1.3-1.6)	1/16-5/64 (1.6-2.0)	1/16 (1.6) Aluminum ⁽¹⁾
15 (4.5)	KP42-25-15	KP44-3545-15	KP44N-3545-15 ⁽¹⁾	KP44-116-15	KP44-564-15	KP44-116-15 ⁽¹⁾
26 (7.9)	-	KP44-3545-25	-	KP44-116-25	KP44-564-25	-

MAGNUM® 300 and 400 - in (mm)

ft (m)	0.025-0.030 (0.6-0.8)	0.035-0.045 (0.9-1.2)	0.035-3/64 (0.9-1.2) Aluminum ⁽¹⁾	0.052-1/16 (1.3-1.6)	1/16-5/64 (1.6-2.0)	1/16 (1.6) Aluminum ⁽¹⁾
15 (4.5)	KP42-25-15	KP44-3545-15	KP44N-3545-15 ⁽¹⁾	KP44-116-15	KP44-564-15	KP44-116-15 ⁽¹⁾
26 (7.9)	-	KP44-3545-25	-	KP44-116-25	KP44-564-25	-

MAGNUM® 550 - in (mm)

ft (m)	.035-.045 (0.9-1.2)	.035-3/64 (0.9-1.2) Aluminum ⁽¹⁾	.052-1/16 (1.3-1.6)	1/16 (1.6) Aluminum ⁽¹⁾	5/64-3/32 (2.0-2.4)	7/64-1/8 (2.8-3.2)
15 (4.5)	KP45-3545-15	KP45N-3545-15	KP45-116-15	KP45N-116-15 ⁽¹⁾	KP45H-332-15	KP45-18-15
25 (7.6)	KP45-3545-25	---	KP45-116-25	---	KP45H-332-25	KP45-18-25

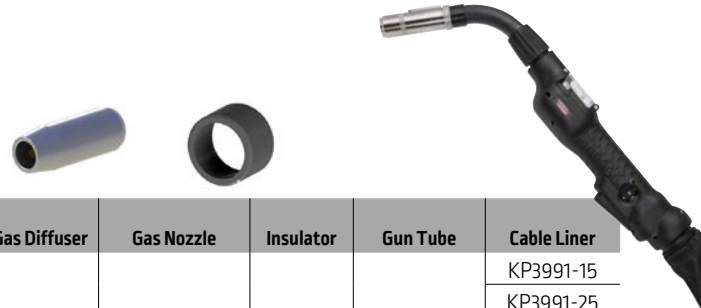
⁽¹⁾ Recommended for aluminum wire welding. Recommended maximum cable length is 10 ft. (3.0 m).

GUN TUBES

Use With These Magnum® Guns	Amperage Capacity	Angle		
		45°	60° [Standard]	82°
Magnum® 100L	100 A		KP2038-1	
Magnum® 200	200 A		KP2028-1	
	300 A	KP1929-2	KP1928-2	
	400 A	KP1929-1	KP1928-1	KP1941-1
Magnum® 250L	250 A	KP2041-1	KP2015-1 [Hard cover] KP2111-1 [Rubber cover]	
Magnum® 300 Magnum® 400	300 A	KP1929-2	KP1928-2	
	400 A	KP1929-1	KP1928-1	KP1941-1
Magnum® 550	600 A		KP1951-1 [3 in. radius bend] KP1951-2 [5 in. radius bend]	



Magnum® PRO AL Push-Pull Guns



STOCK CONFIGURATIONS

Model	Contact Tips	Gas Diffuser	Gas Nozzle	Insulator	Gun Tube	Cable Liner
G225A Air Cooled	KP2745-364AT 3/64 (1.2)	KP2747-1A	KP2743-1-62R	KP3982-1	KP3380-45	KP3991-15
						KP3991-25
						KP3991-35
						KP3991-50
G450W Water Cooled		N/A Water Cooled	KP3375-1	KP3982-2	KP3381-60	KP3991-15
						KP3991-25
						KP3991-35
						KP3991-50
G225A Air Cooled	KP2745-364AT 3/64 (1.2)	KP2747-1A	KP2743-1-62RA	KP3982-1	KP3380-45	KP3991-15
						KP3991-25
						KP3991-35
						KP3991-50
G450W Water Cooled		N/A Water Cooled	KP3375-1	KP3982-2	KP3381-60	KP3991-15
						KP3991-25
						KP3991-35
						KP3991-50

CONTACT TIPS



Wire Diameter in (mm)	350A		550A		550A Spring Loaded
	Pkg. Qty. -10	Pkg. Qty.-100	Pkg. Qty.-10	Pkg. Qty-100	
0.035 (0.9)	KP2744-035AT	-	KP2745-035AT	-	KP3374-035A
3/64 (1.2)	KP2744-364AT KP2744-364AT5356	KP2744-364AT-B100	KP2745-364AT KP2745-364AT5356	KP2745-364AT-B100	KP3374-364A
1/16 (1.6)	KP2744-116AT	KP2744-116AT-B100	KP2745-116AT KP2745-116AT5356	KP2745-116AT-B100	KP3374-116A

OPTIONAL 6" GUN TUBES

Compatible Guns	Degree	Order Number
350A/550A Expendables Compatibility/Threaded Diffuser		
Straight, Air- & Water-Cooled	180°	KP3380-180
Air- & Water-Cooled	60°	KP3380-60
Air- & Water-Cooled	45°	KP3380-45 ⁽³⁾
550A Expendables ONLY/Fixed Diffuser		
Straight & Water-Cooled Gun Tube Assembly	180°	KP3381-180 ⁽¹⁾
Water-Cooled Gun Assembly	60°	KP3381-60 ⁽⁴⁾
Water-Cooled Gun Assembly	45°	KP3381-45 ⁽¹⁾
Straight, Air- & Water-Cooled	180°	KP3988-180 ⁽²⁾
Air- & Water-Cooled	60°	KP3988-60 ⁽²⁾
Air- & Water-Cooled	45°	KP3988-45 ⁽²⁾

(1) Water-Cooled ONLY. Diffuser and nozzles are both water cooled. Use with water-cooled nozzle KP3375-1.

(2) Diffuser is water-cooled. Nozzle is standard air-cooled Magnum PRO 550A Expendable (KP2743-1-62RA)

(3) Included with K3355-XX and K3356-XX guns

(4) Included with K3357-XX and K3358-XX guns

Magnum® PRO AL Pistol Guns

550A EXPENDABLES ARE STANDARD WITH THE MAGNUM® PRO AL PISTOL.



CONTACT TIPS 350A	
Wire Diameter in. (mm)	Order Number
0.035 (0.9)	KP2744-035AT
3/64 (1.2)	KP2744-364AT KP2744-364AT5356 KP2744-364AT-B100 ⁽¹⁾
	KP2744-116AT KP2744-116AT5356 KP2744-116AT-B100 ⁽¹⁾

(1) Sold in quantity of 100

CONDUIT LINERS, ALUMINUM	
Description ft (m)	Order Number
Liner, .035-1/16", Aluminum, 15 [4.5]	KP3543-35116-15
Liner, .035-1/16", Aluminum, 25 [7.6]	KP3543-35116-25
Liner, 3/64-1/16", Aluminum, 35 [10.7]	KP3543-364116-35
Liner, 3/64-1/16", Aluminum, 50 [15.2]	KP3543-364116-50

GUN TUBE ASSEMBLIES		
Cooling System	Degree	Order Number
Air-Cooled	180°	KP3541-180 ⁽¹⁾
Air-Cooled	60°	KP3541-60 ⁽²⁾
Air-Cooled	45°	KP3541-45 ⁽³⁾
Water-Cooled	180°	KP3542-180 ⁽²⁾
Water-Cooled	60°	KP3542-60 ⁽³⁾
Water-Cooled	45°	KP3542-45 ⁽³⁾

(1) Included with K3478-XX guns
 (2) Included with K3479-XX guns
 (3) 9553244-22 and KP2879-3 required for assembly

350A SERIES EXPENDABLES	
Description	Order Number
Gas Diffuser, each	KP2746-1
Gas Diffuser, 25 pcs.	KP2746-1-B25
Insulator, 350A Gun Tube, each	KP2773-2
Insulator, 350A Gun Tube, 25 pcs.	KP2773-2-B25
Gas Nozzle Assembly 5/8 in (15.9 mm)	KP2742-1-62R

For all possible options, reference bulletin E12.09.



CONTACT TIPS 550A	
Wire Diameter in. (mm)	Order Number
0.035 (0.9)	KP2745-035AT ⁽¹⁾
3/64 (1.2)	KP2745-364AT ⁽¹⁾ KP2745-364AT5356 KP2745-364AT-B100 ⁽²⁾
	KP2745-116AT KP2745-116AT5356 KP2745-116AT-B100 ⁽²⁾

(1) Included with gun
 (2) Sold in Quantity of 100

CONDUIT LINERS, STEEL	
Description ft (m)	Order Number
Liner, .035-.045, Steel, 15 [4.5]	KP3544-3545-15
Liner, .035-.045, Steel, 25 [7.6]	KP3544-3545-25
Liner, .035-.045, Steel, 35 [10.7]	KP3544-3545-35

550A SERIES EXPENDABLES	
Description	Order Number
Gas Diffuser	KP2747-1A
Gas Diffuser, 25 pcs.	KP2747-1A-B25
Insulator, 550A Gun Tube, each	KP2773-1
Insulator, 550A Gun Tube, 25 pcs.	KP2773-1-B25
Gas Nozzle Assembly 5/8 in (15.9 mm)	KP2743-1-62RA

Use with water-cooled nozzle KP3375-1
 For all possible options, reference bulletin E12.09



JUMP LINERS	
Description in. (mm)	Order Number
Jump Liner 0.035 - 1/16 [0.9 - 1.6]	KP2879-3

Cougar™ Expendables

PRODUCT SPECIFICATIONS

Product Name	Amperage Rating	Wire Diameter Range		Cable Length ft (m)
		in	(mm)	
Cougar™ Air Cooled	Argon: 300A @ 60% Duty Cycle	.035 - 1/16	[0.9 - 1.6]	25 [7.6]
Cougar™ Air Cooled	Argon: 300A @ 60% Duty Cycle	.035 - 1/16	[0.9 - 1.6]	50 [15.2]



GUN TUBE INSULATOR
350 A

Part #
KP2773-2



**GAS DIFFUSER 350 A
FOR THREAD-ON NOZZLES**

Thread-on Standard Duty
KP2746-1

STANDARD CONTACT TIP 350 A

Wire Diameter in. (mm)	Standard Pkg. Qty. - 10
.035 [0.9]	KP2744-035AT
3/64 [1.2]	KP2744-364AT
3/64 [1.2]*	KP2744-364AT5356
1/16 [1.6]	KP2744-116AT

* For low amperage 5356 wire applications.



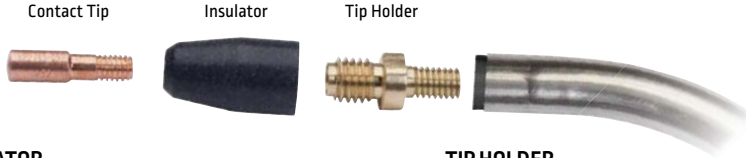
GAS NOZZLE 350 A

Nozzle	Standard 1/2 [12.7]	Standard 5/8 [15.9]
1/8 [3.2] Recess	KP2742-1-50R	KP2742-1-62R
Flush	KP2742-1-50F	KP2742-1-62F

BARREL LINERS

ANGLE (DEGREES)	BARREL SIZE	Part Number
45° and 60°	[.035 - 1/16"]	KP2879-1
180°	[0.35 - 1/16"]	KP2879-2

K126™ PRO Expendables



K466-10 Gun Connector Shown⁽³⁾

INSULATOR

Pkg. Qty.	Part Number
1	KP2907-1

TIP HOLDER

Pkg. Qty.	Part Number
1	KP2908-1

CONTACT TIPS 550A

Wire Diameter - in (mm)	Standard	Standard	Extended Life	Extended Life
	Pkg. Qty. -10	Pkg. Qty. -100	Pkg. Qty. -10	Pkg. Qty. -100
0.035 (0.9)	KP2745-035	KP2745-035-B100	KP2745-035R	KP2745-035R-B100
0.040 (1.0)	KP2745-040	KP2745-040-B100	-	-
0.045 (1.2)	KP2745-045	KP2745-045-B100	KP2745-045R	KP2745-045R-B100
0.052 (1.3)	KP2745-052	KP2745-052-B100	KP2745-052R	KP2745-052R-B100
1/16 (1.6)	KP2745-116	KP2745-116-B100	KP2745-116R	KP2745-116R-B100
0.068-0.072 (1.7-1.8)	KP2745-072	KP2745-072-B100	KP2745-072R	KP2745-072R-B100
5/64 (2.0)	KP2745-564	KP2745-564-B100	KP2745-564R	KP2745-564R-B100
3/32 (2.4) ⁽¹⁾	KP2745-332	KP2745-332-B100	KP2745-332R	KP2745-332R-B100
7/64 (2.8) ⁽¹⁾	KP2745-764	KP2745-764-B100	KP2745-764R	KP2745-764R-B100
1/8 (3.2) ⁽¹⁾	KP2745-18	KP2745-18-B100	-	-

(1) 550 only



GUN TUBE (GOOSENECKS)

Parts Number	Gun Tube Description
Reverse Bend⁽²⁾	
Stainless Steel Jacket	
KP2906-62R	62° Reverse Bend, 6 in. (152 mm)
KP2906-30R	30° Reverse Bend, 6 in. (152 mm)
KP2906-30R-L	30° Reverse Bend, 12 in. (305 mm)
Non-Reverse	
Stainless Steel Jacket	
KP2906-62	62° Non-Reverse Bend, 6 in. (152 mm)
KP2906-30	30° Non-Reverse Bend, 6 in. (152 mm)
KP2906-30-L	30° Non-Reverse Bend, 12 in. (305 mm)
Reverse Bend	
Classic Braided Varnish Jacket⁽³⁾	
KP2927-62R	62° Reverse Bend, 6 in. (152 mm)
KP2927-30R-L	30° Reverse Bend, 12 in. (305 mm)
KP2482-1	30° Reverse Bend, 11.68 in. (297 mm)
Non-Reverse Bend	
Classic Braided Varnish Jacket⁽³⁾	
KP3267-1	30° Non-Reverse Bend, 12 in. (305 mm)

(2) Reverse Bend gun tubes require a 3/32 in. (2.4 mm) liner.

(3) Gun tubes require corresponding gun connector and liner.
Maximum diameter 5/64 in. (2.0 mm)

GUN LINERS - in. (mm)

K466 Series Gun Connector	K613 Series Gun Connector
K466 Series Gun Connector	K613 Series Gun Connector
Wire Diameter 1/16 - 5/64 in. (1.6 - 2.0 mm)	Wire Diameter 1/16 - 3/32 in. (1.6 - 2.4 mm)
KP44-564-15	KP45H-332-15

GENERAL OPTIONS



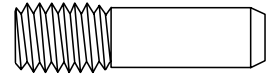
Magnum® PRO Harness Adapter
Required for use with Magnum® PRO Dual Procedure or Dual Schedule guns when adapting to Miller Electric® wire feeders.
Order K3159-1

Magnum® Classic Self-Shielded Semiautomatic Guns

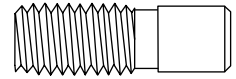


EXPENDABLES

Description	K115-1, K115-2, K115-8	K115-3, K115-4, K115-10	K116-2	K126-1, K126-2	K345-10
CONTACT TIPS SEVERE DUTY					
1/16 in.	—	—	—	KP2100-2B1	—
068-.072 in.	—	—	—	KP2100-1B1 ⁽¹⁾	KP2100-1B1 ⁽¹⁾
5/64 in.	—	—	—	KP2100-4B1 ⁽¹⁾	KP2100-4B1 ⁽¹⁾
3/32 in.	—	KP2103-4B1 ⁽¹⁾	KP2103-4B1	KP2100-3B1 ⁽¹⁾	—
7/64 in.	KP2103-6B1 ⁽¹⁾	—	KP2103-6B1 ⁽¹⁾	—	—
.120 in.	KP2103-3B1 ⁽¹⁾	—	KP2103-3B1 ⁽¹⁾	—	—
CONTACT TIPS EXTENDED LIFE					
1/16 in.	—	—	—	KP2935-116	—
.072 in.	—	—	—	KP2935-072	—
5/64 in.	—	—	—	KP2935-564	—
3/32 in.	—	—	—	KP2935-332	—



Contact Tips (KP2100-X)



Contact Tips (KP2103)

⁽¹⁾ Included as standard with Gun and Cable Assembly. ⁽²⁾ Thread protector.

GUN TUBES

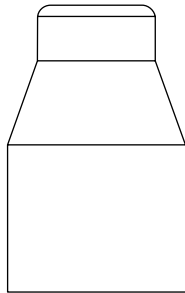
30° Standard Length	—	—	—	KP1914-2	KP1914-2
30° Long Length	—	—	—	KP1914-1	KP1914-1
45°	KP1910-1	KP1910-2	—	—	—
45° Hardfacing	KP1952-1	—	—	—	—
62°	—	—	—	KP1909-1	KP1909-1
82°	KP1907-1	KP1907-2	—	—	—
Straight	—	—	KP1908-1, -2	—	—
82° Hardfacing	KP1953-1	—	—	—	—
90°	—	—	—	KP1920-1	KP1920-1

Magnum® Classic Self-Shielded Semiautomatic Guns

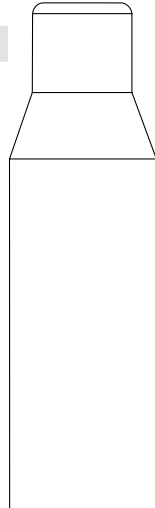
Insulated Guides

K115 & K116

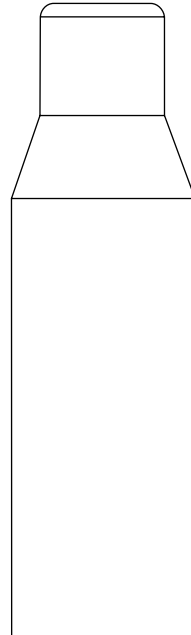
Electrical Stickout in (mm)	Part Number
1-1/2 (38)	KP1971-1
2-3/4 (70)	KP1965-1
3-3/4 (95)	KP1965-2



Insulated Guide
(KP1971-1)



Insulated Guide
(KP1965-2)

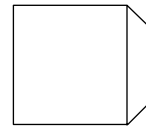


Insulated Guide
(KP1965-1)

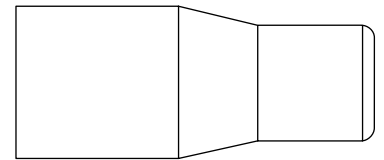
Line art is drawn to scale.

K126 (Classic)

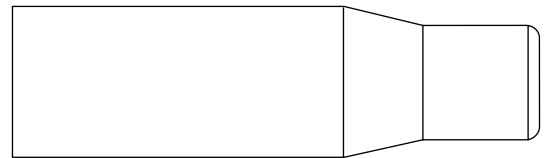
Electrical Stickout	Thread Protector	Insulated Guide
.75-1.50"	KP2089-1	-
1.50"	-	KP1987-1
2.00" (51 mm)	-	KP1995-1
2.75" (70 mm)	-	KP2090-1



Thread Protector
(KP2089-1)



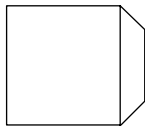
Insulated Guide
(KP1995-1)



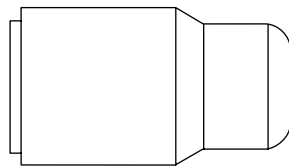
Insulated Guide (KP2090-1)

K264, K345, K355 & K361

Electrical Stickout - in	Thread Protector	Insulated Guide
3/4-1-1/2	KP2089-1	KP1987-1
2	-	KP1995-1



Thread Protector (KP2089-1)



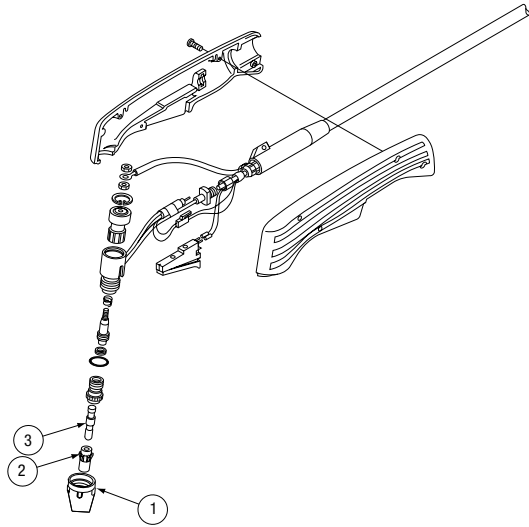
Insulated Guide (KP1987-1)

INSULATED GUIDES

Description	K115-1, -2, -8	K115-3, -4, -10	K116-2	K126-1, -2 ⁽²⁾	K345-10
1-1/2 in. Stickout	KP1971-1 ⁽¹⁾	KP1971-1 ⁽¹⁾	KP1971-1 ⁽¹⁾	-	-
1-1/2 in. Stickout	-	-	-	KP1987-1	KP1987-1
2 in. Stickout	-	-	-	KP1995-1	KP1995-1 ⁽¹⁾
2-3/4 in. Stickout	-	-	-	KP2090-1	-
2-3/4 in. Stickout	-	-	-	-	-
3-3/4 in. Stickout	KP1965-1 ⁽¹⁾	KP1965-1 ⁽¹⁾	KP1965-1 ⁽¹⁾	-	-
3/4-1 in. Stickout	KP1965-2	KP1965-2	KP1965-2	KP2089-1 ⁽¹⁾⁽²⁾	KP2089-1 ⁽¹⁾⁽²⁾

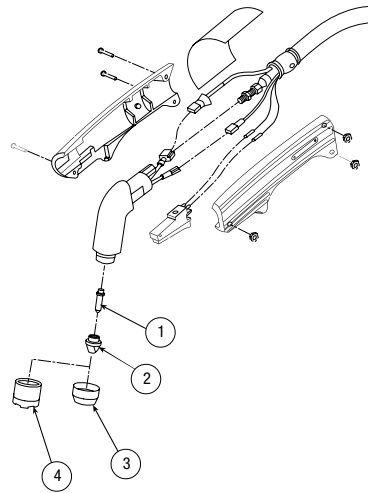
(1) Included as standard with Gun and Cable Assembly. (2) Thread protector.

PCT-20 Handheld Torch



ITEM	DESCRIPTION	Part #	QTY
	PCT 20 Torch & Cable Asbly -15'	K1615-1	1
1	Shield Cup	KP2064-1	6
2	Vortech Nozzle (.028")	KP2062-1B1	5
3	Electrode	KP2063-1B1	30

PCT-40 & 60 Torch & Cable

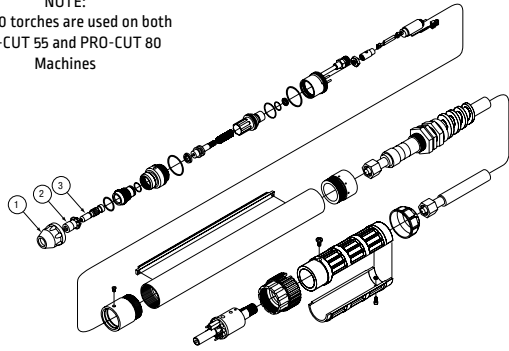


ITEM	DESCRIPTION	Part #	QTY
	MAG PCT-60 Torch & Cable Assembly 70°, 60 Amp, 25 Ft.	K871-1	1
	MAG PCT-40 Torch	Discontinued	
1	Electrode	KP2012-1B1	5
2	Nozzles - PCT-60		
	Cutting .035" (.9 mm) Orifice	KP2008-1B1	5
	Cutting .042" (1.1 mm) Orifice	KP2008-2B1	5
	Cutting .052" (1.3 mm) Orifice	KP2008-3B1	5
	Gouging .078" (2.0 mm) Orifice	KP2008-4B1	5
	Nozzles - PCT-40		
	Cutting .042" (1.1 mm) Orifice	KP2008-5B1	5
3	Shield Cup Assembly (PCT-60)	KP2077-1	1
3	Shield Cup Assembly (PCT-40)	KP2014-1	1
4	Drag Cup Assembly (PCT-60)	KP2027-1*	1
	Drag Cup #6-32 x .75 PHS	KP2075-1	1
4	Drag Cup Assembly (PCT-40)	KP2012-1B1	5

* Discontinued

PCT-80 Machine Torch

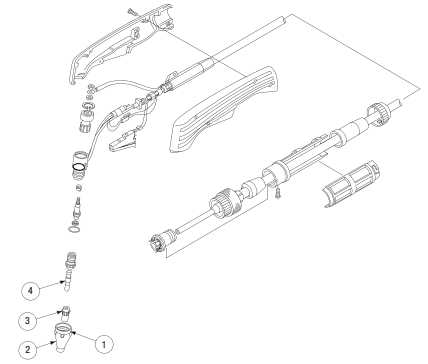
NOTE:
PCT-80 torches are used on both
PRO-CUT 55 and PRO-CUT 80
Machines



ITEM	DESCRIPTION	Part #	QTY
	PCT-80 Machine Torch & Cable Assembly 25'	K1571-3	
1	Shield Cup	KP2064-1	6
2	Nozzle [.043]	KP2062-2B1	30
	Nozzle [.053]	KP2062-3B1	30
	Nozzle [.068]	KP2062-4B1	30
	Nozzle [.082]	KP2062-5B1	30
3	Electrode	KP2063-1B1	30
	Item Not Shown:		
	Gouging Nozzle [.068]	KP2062-4B1	30

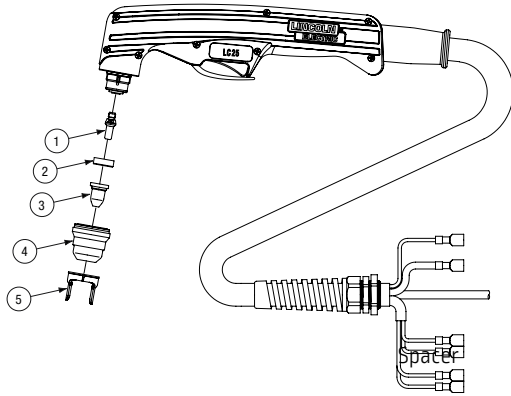
PCT-80 Handheld Torch

NOTE:
PCT-80 torches are used on both
PRO-CUT 55 and PRO-CUT 80
Machines



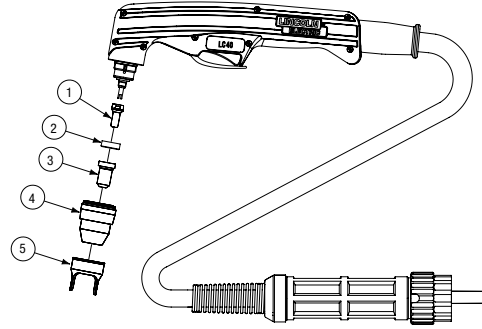
ITEM	DESCRIPTION	Part #	QTY
	PCT 80 Torch & Cable Assembly 25'	K1571-1	1
	PCT 80 Torch & Cable Assembly 50'	K1571-2	1
1	Shield Cup	KP2064-1	6
2	Drag Cup	KP2065-1	6
3	Nozzle [35 - 60 Amp.]	KP2062-2B	30
	Nozzle [60 - 85 Amp.]	KP2062-3B1	30
4	Electrode	KP2063-1B1	30

Tomahawk®

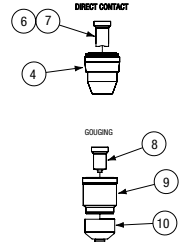


ITEM	DESCRIPTION	Part #	QTY
	LC25 Torch & Cable Assembly	K2846-1	1
1	Electrode	KP2842-1	5
2	Swirl Ring	KP2842-4	5
3	Nozzle	KP2842-2	5
4	Retaining Cap	KP2842-3	5
5	Spacer	KP2842-5	1
	Plasma Consumable Kit for LC Handheld Torch	KP5346-1	1

Tomahawk® LC40



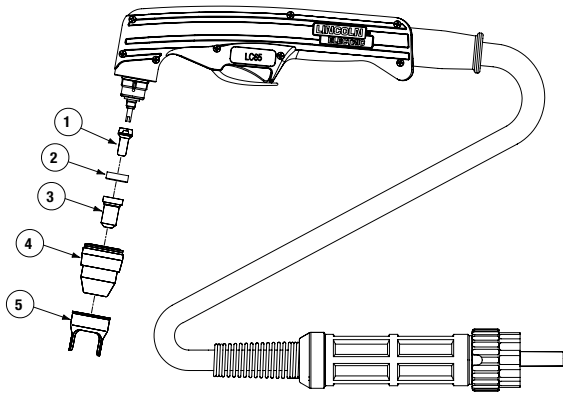
LC40 Optional Accessories & Related Accessories



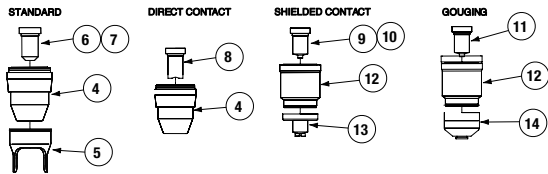
ITEM	DESCRIPTION	Part #	QTY
	LC40 Handheld Plasma Torch (20') (6m)	K2847-1	1
1	Electrode	KP2843-1	5
2	Swirl Ring	KP2842-4	3
3	Nozzle (40A)	KP2843-2	5
4	Retaining Cap	KP2843-5	1
5	Spacer	KP2843-10	2
	Optional Nozzles & Related Accessories: (Not Included in K2847-1)		
6	Nozzle (Direct Contact) (25A)	KP2843-9	5
7	Nozzle (Direct Contact) (40A)	KP2843-3	5
8	Nozzle (Gouging)	KP2843-4	5
9	Retaining Cap (Gouging)	KP2843-6	1
10	Gouge Shield	KP2843-8	2

- It is normal for the electrode and nozzle to wear during operation.
- Electrodes should typically be replaced when erosion reaches 0.025 in. (0.65 mm).
- A green and erratic arc will indicate the end of electrode life. The electrode should be immediately replaced.
- It is recommended that the KP2843-1 Electrode and KP2843-2 Nozzle (40A) be replaced as a complete set.

Tomahawk® LC 65 Handheld Plasma Torch

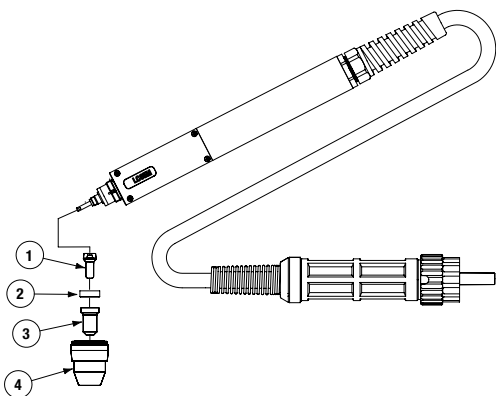


LC65 Optional Nozzles & Related Accessories

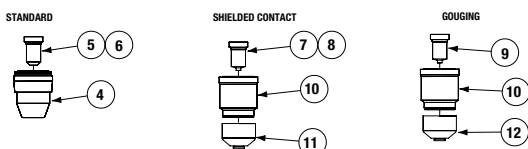


ITEM	DESCRIPTION	Part #	QTY
	LC65 Handheld Plasma Torch (25') (7.5m), Includes:	K2848-1	
	LC65 Handheld Plasma Torch (50') (15m), Includes:	K2848-2	
1	Electrode (60A)	KP2844-1	5
2	Swirl Ring (40,50,60A)	KP2844-14	3
3	Nozzle (60A)	KP2844-4	5
4	Retaining Cap (40A-60A)	KP2844-9	1
	Retaining Cap (Shielded Contact)	KP2844-10	1
5	Spacer	KP2843-10	2
Optional	Nozzles & Related Accessories: (Not Included in K2848-1 or -2)		
6	Nozzle (40A)	KP2844-2	5
7	Nozzle (50A)	KP2844-3	5
8	Nozzle (Direct Contact) (40A)	KP2844-5	5
9	Nozzle (Shielded Contact) (50A)	KP2844-6	5
10	Nozzle (Shielded Contact) (60A)	KP2844-7	5
11	Nozzle (Gouging)	KP2844-8	5
12	Retaining Cap (Shielded Contact)	KP2844-10	1
13	Shield (50,60A)	KP2844-11	2
14	Gouge Shield	KP2844-12	2

Tomahawk® LC 65M Machine Plasma Torch

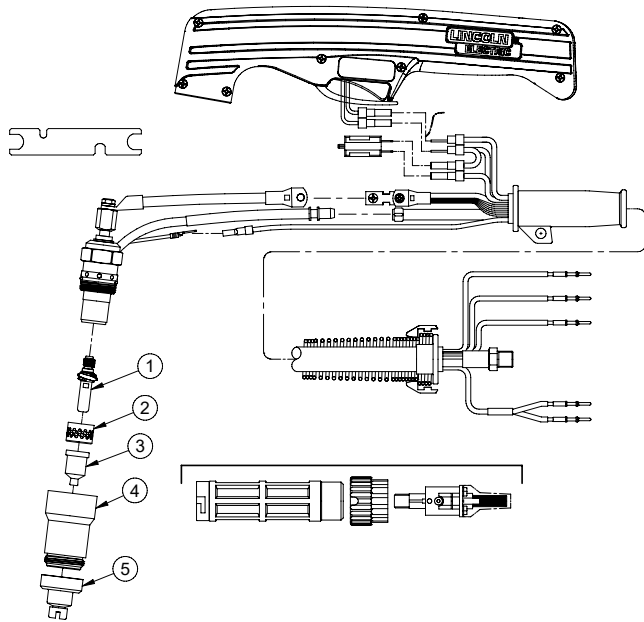


LC65M Optional Nozzles & Related Accessories



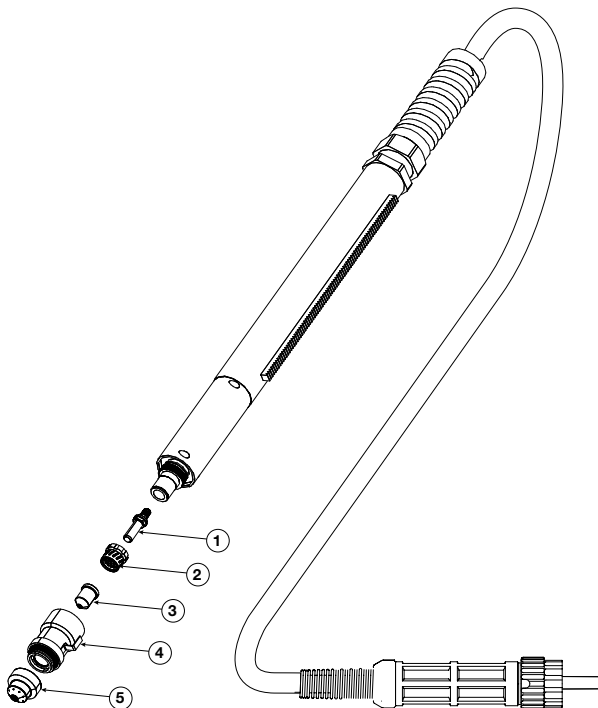
ITEM	DESCRIPTION	Part #	QTY
	LC65M Machine Plasma Torch (25') (7.5m), Includes:	K2848-3	1
1	Electrode	KP2844-1	5
2	Swirl Ring (40,50,60A)	KP2844-14	3
3	Nozzle (60A)	KP2844-4	5
4	Retaining Cap (40,60A)	KP2844-9	1
Optional	Nozzles & Related Accessories: (Not Included in K2848-3)		
5	Nozzle (40A)	KP2844-2	5
6	Nozzle (50A)	KP2844-3	5
7	Nozzle (Shielded Contact) (50A)	KP2844-6	5
8	Nozzle (Shielded Contact) (60A)	KP2844-7	5
9	Nozzle (Gouging)	KP2844-8	5
10	Retaining Cap (Shielded Contact)	KP2844-10	1
11	Shield (40,60A)	KP2844-13	2
12	Gouge Shield	KP2844-12	2
	Plasma Consumable Kit for LC65M Machine Torches	KP5348-1	1

Tomahawk® LC105 Handheld Plasma Torch



ITEM	DESCRIPTION	Part #	QTY	1	2
	LC105 TORCH (25 FT.) INCLUDES:	K2849-1		X	.
	LC105 TORCH (50 FT.) INCLUDES:	K2849-2		.	X
1	ELECTRODE (LC105)	KP2845-1	1	X	.
1	ELECTRODE (LC105)	KP4141-1	5	.	X
2	SWIRL RING (LC105)	KP2845-11	1	X	.
2	SWIRL RING (LC105)	KP4141-9	2	.	X
3	NOZZLE - 100A (LC105)	KP2845-8	1	X	.
3	NOZZLE (40A)	KP4141-4	5	.	X
3	NOZZLE (60A)	KP4141-5	5	.	X
3	NOZZLE (80A)	KP4141-6	5	.	X
3	NOZZLE (100A)	KP4141-7	5	.	X
3	NOZZLE (GOUGING) (80A)	KP4141-18	5	.	X
3	NOZZLE (GOUGING) (100A)	KP4141-19	5	.	X
4	RETAINING CAP (CONTACT)	KP2845-10	1	X	.
4	RETAINING CAP (CONTACT)	KP4141-8	1	.	X
5	DRAG SHIELD CAP (40A)	KP4141-14	2	X	.
5	DRAG SHIELD CAP (60-80A)	KP4141-15	2	.	X
5	DRAG SHIELD CAP (100A)	KP4141-16	2	.	X
5	DRAG SHIELD CAP (80-100A)	KP4141-17	2	.	X
	Starter Kit for LC105 Handheld Torch	KP4141-20	1		

Tomahawk® LC105MR Machine Plasma Torch



ITEM	DESCRIPTION	Part #	QTY
	LC105MR TORCH (25FT), INCLUDES:	K2849-3*	
	LC105MR TORCH (50FT), INCLUDES:	K2849-4*	
1	ELECTRODE LC105M	KP4141-1	2
2	SWIRL RING LC105M	KP4141-9	1
3	NOZZLE (80A) LC105M	KP4141-6	2
4	RETAINING CAP ASSEMBLY (CTP) LC105M	KP4141-8	1
5	DRAG SHIELD CAP (100A) LC105M	KP4141-15	1

* Obsolete

Torchmate®

Growth Series™ 2x2™ CNC Prototyping System / Tomahawk® 625 One-Pak®

TOMAHAWK® 625 TORCH CONSUMABLES

Product Number	Description	
KP2843-1	Electrode	Standard
KP2843-2	Nozzle 40A	Standard
KP2843-3	Nozzle (Contact) 40A	Optional
KP2843-4	Nozzle (Gouging)	Optional
KP2843-5	Retaining Cap	Standard
KP2843-6	Retaining Cap (Gouging)	Optional
KP2843-8	Gouge Shield	Optional
KP2843-9	Nozzle (Contact) - 25A	Optional
KP2843-10	Spacer	Standard

Torchmate Contact Information

Consumables & Parts orders: (775) 673-2200 or Parts@Torchmate.com

Customer Service & Support: (775) 673-2200 or Support@Torchmate.com



TIG Torches

PRODUCT SPECIFICATIONS PTA-9, -17, -26 SERIES AIR-COOLED TIG TORCHES

Product Name	Part Number	Rated Amperage	Duty Cycle	Cable Length ft. (m)	Number of Cables	Tungsten Range in (mm)
PTA-9	K1781-1	125	60%	12.5 (3.8)	1	0.020 - 1/8 (0.8 - 3.2)
	K1781-3			25.0 (7.6)		
PTA-9F Ultra-Flex ⁽¹⁾ Pkg.	K1781-9	125	60%	12.5 (3.8)	1	0.020 - 1/8 (0.8 - 3.2)
PTA-17	K1782-1	150	60%	12.5 (3.8)	1	0.020 - 5/32 (0.5 - 4.0)
	K1782-2			12.5 (3.8)	2	
	K1782-3			25.0 (7.6)	1	
	K1782-4			25.0 (7.6)	2	
PTA-17F	K1782-10	150	60%	25.0 (7.6)	1	0.020 - 5/32 (0.5 - 4.0)
PTA-17FV	K1782-11 K1782-13	150	60%	25.0 (7.6) 12.5 (3.8)	1	0.020 - 5/32 (0.5 - 4.0)
PTA-17V	K1782-6	150	60%	12.5 (3.8)	1	0.020 - 5/32 (0.5 - 4.0)
	K1782-7			12.5 (3.8)	2	
	K1782-8			25.0 (7.6)	1	
	K1782-9			25.0 (7.6)	2	
PTA-17 Ultra-Flex	K1782-12	150	60%	12.5 (3.8)	1	0.020 - 5/32 (0.5 - 4.0 mm)
PTA-26	K1783-1	200	60%	12.5 (3.8)	1	0.020 - 5/32 (0.5 - 4.0)
	K1783-2			12.5 (3.8)	2	
	K1783-3			25.0 (7.6)	1	
	K1783-4			25.0 (7.6)	2	
PTA-26F	K1783-10	200	60%	25.0 (7.6)	1	0.020 - 5/32 (0.5 - 4.0)
PTA-26FV	K1783-11	200	60%	25.0 (7.6)	1	0.020 - 5/32 (0.5 - 4.0)
PTA-26V	K1783-7	200	60%	12.5 (3.8)	2	0.020 - 5/32 (0.5 - 4.0)
	K1783-8			25.0 (7.6)	1	
	K1783-9			25.0 (7.6)	2	

(1) Pre-configured package with K1622-1 Twist-Mate adapter and 1/16 in. (1.6 mm) gas lens collet body, collet and gas lens installed.

PRODUCT SPECIFICATIONS PTW-18, -20 & 20H-320 SERIES WATER-COOLED TIG TORCHES

Product Name	Part Number	Rated Amperage	Duty Cycle	Cable Length ft. (m)	Number of Cables	Tungsten Range in (mm)
PTW-18	K1784-1	350	100%	12.5 (3.8)	3	0.020 - 5/32 (0.5 - 4.0)
	K1784-2			25.0 (7.6)		
PTW-20	K1784-3	250	100%	12.5 (3.8)	3	0.020 - 1/8 (0.5 - 3.2)
	K1784-4			25.0 (7.6)		
20H-320-25R	K4168-2	320	100%	25.0 (7.6)	3	0.020 - 1/8 (0.5 - 3.2)

What You Need To Get Started

Along with your Pro-Torch TIG torch, you may need to purchase the following accessories to begin welding:

TIG Torch Connection Adapter

A variety of adapters exist to connect to a variety of output terminals such as 1/2 in. (12.7 mm) studs, Twist-Mate output terminals and Precision TIG-style connectors.

Tungsten Electrode

Your welding supplier can provide you with the proper electrode for your application. Use the Tungsten Electrode chart, as a guide for ordering the appropriate tungsten.

Expendables

Parts Kits

Parts Kits conveniently provide all the torch accessories you need to start welding. Parts Kits provide collets, collet bodies, a back cap, alumina nozzles and tungstens in a variety of sizes, all packaged in an easy to carry reclosable box.

Collets

These hold the tungsten firmly in your torch. They are purchased according to the tungsten size and must be used with the proper corresponding collet bodies, or gas lens collet bodies.

Collet Bodies and Gas Lens Collet Bodies

Collet bodies hold the collet and tungsten in place. Gas lens collet bodies are used in conjunction with gas lenses when precise control of shielding gas flow is required.

Alumina Nozzles

These nozzles, made of high temperature ceramic material, protect the collet body and direct the gas flow to the weld. Choose them according to the chart on this page 7, for your specific application.

Back Cap

Each torch comes with one back cap which is sufficient for most applications. PTA-9 and PTW-20 torches include a medium back cap. PTA-17, PTA-26 and PTW-18 torches include a long back cap. The 20H-320-25R includes a medium back cap. However, optional longer or shorter back caps are available for each torch.

TIG Torch Connection Adapters

These adapters connect the TIG torch cables to the power source. May be required for certain torches.

DESCRIPTION	PART NO. (INDUSTRY REF.)	FIGURE
PRECISION TIG 275 & 375 POWER SOURCES		
PTA-26, 26V, 26F, 26FV one piece cable	K2166-1	4
PTA-9, 9F, 17F, 17V, 17FV one piece	K2166-3	4
PTA-17V, -26V two piece cable	K2166-2	4
PTW-18, 20 and 20H-320	No adapter required	-
FOR POWER SOURCES WITH 1/2 IN OUTPUT TERMINALS (INCLUDING THE TIG MODULE)		
PTW-18, 20 and 20H-320	K2505-2, K1622-4	-
PTA-26, 26F, 26V, 26FV one piece cable	K2505-2, K1622-3	-
PTA 9 one piece cable	K2505-2, K1622-1	-
PTA-17V, 26V two piece cable	No adapter required	-
FOR SQUARE WAVE TIG 175, PRECISION TIG 225, INVERTEC V160-T, AND ASPECT™ 375 AND POWER SOURCES WITH TWIST-MATE RECEPTACLE (WITH GAS PASS THROUGH)		
PTA-9, -9F, 17, 17F, 17V, 17FV one piece cable	K1622-1	3
PTW-18, 20 and 20H-320	K1622-4, *K1622-5 (recommended for the Aspect 375)	1
PTA-26, 26V, 26F, 26FV one piece cable	K1622-3	3
FOR INVERTEC V155-S AND POWER SOURCES WITH SMALL TWIST-MATE RECEPTACLE AND SEPARATE GAS		
PTA-17V, 17FV one piece cable	K960-2	2
FOR POWER SOURCES WITH TWECO STYLE OUPUT TERMINAL AND SEPARATE GAS		
PTW-18, 20, 20H-320	K1622-6	-
PTA-17V, 17VF one piece cable	K960-4	2
PTA-26V, 26FV one piece cable	K960-3	2
FOR POWER MIG® 210 MP AND POWER SOURCES WITH TWIST-MATE RECEPTACLE AND SEPARATE GAS		
PTA-17V, 17FV one piece cable	K960-1	2



- Use K2505-1 for connecting Twist-Mate Adapter with gas pass through to Twist-Mate receptacle without gas pass through (separate gas).

TIG Expendable Parts

COLLET



FOR PTA-9, PTW-20 & 20H-320 SERIES TORCHES

Name	Part No.	Industry Ref. No.	Tungsten Diameter in (mm)
Collet	KP2029-1B1	13N20	0.020 [0.5]
	KP2029-2B1	13N21	0.040 [1.0]
	KP2029-3B1	13N22	1/16 [1.6]
	KP2029-4B1	13N23	3/32 [2.4]
	KP2029-5B1	45V24	1/8 [3.2]

FOR PTA-17, PTA-26 & PTW-18 SERIES TORCHES

Name	Part No.	Industry Ref. No.	Tungsten Diameter in (mm)
Collet	KP2030-1B1	10N21	0.020 [0.5]
	KP2030-2B1	10N22	0.040 [1.0]
	KP2030-3B1	10N23	1/16 [1.6]
	KP2030-4B1	10N24	3/32 [2.4]
	KP2030-5B1	10N25	1/8 [3.2]
	KP2030-6B1	54N20	5/32 [4.0]

COLLET BODY



FOR PTA-9, PTW-20 & 20H-320 SERIES TORCHES

Name	Part No.	Industry Ref. No.	Tungsten Diameter in (mm)
Collet Body	KP2031-1B1	13N25	0.020 [0.5]
	KP2031-2B1	13N26	0.040 [1.0]
	KP2031-3B1	13N27	1/16 [1.6]
	KP2031-4B1	13N28	3/32 [2.4]
	KP2031-5B1	13N29	1/8 [3.2]

FOR PTA-17, PTA-26 & PTW-18 SERIES TORCHES

Name	Part No.	Industry Ref. No.	Tungsten Diameter in (mm)
Collet Body	KP2032-1B1	10N29	0.020 [0.5]
	KP2032-2B1	10N30	0.040 [1.0]
	KP2032-3B1	10N31	1/16 [1.6]
	KP2032-4B1	10N32	3/32 [2.4]
	KP2032-5B1	10N28	1/8 [3.2]
	KP2032-6B1	406488	5/32 [4.0]

FOR PTA-9, PTW-20 & 20H-320 SERIES TORCHES

Name	Part No.	Industry Ref. No.	Nozzle Orifice Dia. in (mm)	Size (16th of an inch)	Length
Alumina Nozzle	KP2017-1B1	13N08	1/4 [6]	4	1-5/32 in [29.3 mm]
	KP2017-2B1	13N09	5/16 [8]	5	
	KP2017-3B1	13N10	3/8 [10]	6	
	KP2017-4B1	13N11	7/16 [11]	7	
	KP2017-5B1	13N12	1/2 [12.5]	8	
	KP2017-6B1	13N13	5/8 [16]	10	

ALUMINA NOZZLES



FOR PTA-17, PTA-26 & PTW-18 SERIES TORCHES

Name	Part No.	Industry Ref. No.	Nozzle Orifice Dia. in (mm)	Size (16th of an inch)	Length
Alumina Nozzle	KP2016-6B1	10N50	1/4 [6]	4	1-5/32 in [29.3 mm]
	KP2016-5B1	10N49	5/16 [8]	5	
	KP2016-4B1	10N48	3/8 [10]	6	
	KP2016-3B1	10N47	7/16 [11]	7	
	KP2016-2B1	10N46	1/2 [12.5]	8	
	KP2016-1B1	10N45	5/8 [16]	10	

Parts shown are not actual size.

TIG Expendable Parts continued

GAS LENS COLLET BODIES



FOR PTA-9, PTW-20 & 20H-320 SERIES TORCHES

Name	Part No.	Industry Ref. No.	Tungsten Diameter in (mm)
Gas Lens Collet Body	KP2033-1B1	45V41	0.020 (0.5)
	KP2033-2B1	45V42	0.040 (1.0)
	KP2033-3B1	45V43	1/16 (1.6)
	KP2033-4B1	45V44	3/32 (2.4)
	KP2033-5B1	45V45	1/8 (3.2)

FOR PTA-17, PTA-26 & PTW-18 SERIES TORCHES

Name	Part No.	Industry Ref. No.	Tungsten Diameter in (mm)
Gas Lens Collet Body ¹	KP2034-1B1	45V29	0.020 (0.5)
	KP2034-2B1	45V24	0.040 (1.0)
	KP2034-3B1	45V25	1/16 (1.6)
	KP2034-4B1	45V26	3/32 (2.4)
	KP2034-5B1	45V27	1/8 (3.2)
	KP2034-6B1	45V28	5/32 (4.0)

ALUMINA GAS LENS NOZZLES



FOR PTA-9, PTW-20 & 20H-320 SERIES TORCHES

Name	Part No.	Industry Ref. No.	Nozzle Orifice Dia. in (mm)	Size (16th of an inch)	Length
Alumina Gas Lens Nozzle	KP2019-1B1	53N58	1/4 (6)	4	1 in (25.4 mm)
	KP2019-2B1	53N59	5/16 (8)	5	
	KP2019-3B1	53N60	3/8 (10)	6	
	KP2019-4B1	53N61	7/16 (11)	7	

FOR PTA-17, PTA-26 & PTW-18 SERIES TORCHES

Name	Part No.	Industry Ref. No.	Nozzle Orifice Dia. in (mm)	Size (16th of an inch)	Length
Alumina Gas Lens Nozzle ²	KP2018-5B1	54N18	1/4 (6)	4	1-5/8 in (41.3 mm)
	KP2018-4B1	54N17	5/16 (8)	5	
	KP2018-3B1	54N16	3/8 (10)	6	
	KP2018-2B1	54N15	7/16 (11)	7	1-1/8 in (28.5 mm)
	KP2018-1B1	54N14	1/2 (12.5)	8	
	KP2018-6B1	54N19	11/16 (17)	Short	

[1] Note: Use of these Gas Lens Collet Bodies requires a KP2037-3B1 (54N01) Gas Lens Insulator

[2] Note: Use of these Alumina Gas Lens Nozzles requires a KP2037-3B1 (54N01) Gas Lens Insulator

BACK CAPS



FOR PTA-9, PTW-20 & 20H-320 SERIES TORCHES

Name	Part No.	Industry Ref. No.	Tungsten Diameter in (mm)
Back Caps	KP2035-1B1	41V33	Short
	KP2035-2B1	41V35	Medium
	KP2035-4B1	41V24	Long

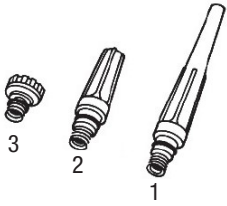
FOR PTA-17, PTA-26 & PTW-18 SERIES TORCHES

Name	Part No.	Industry Ref. No.	Tungsten Diameter in (mm)
Back Caps	KP2036-1B1	57Y02	Long
	KP2036-2B1	57Y04	Short

Parts shown are not actual size.

TIG Expendable Parts continued

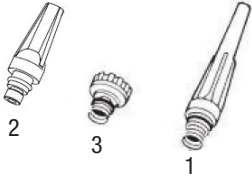
BACK CAPS



FOR CALIBER AIR-COOLED TIG TORCHES

Item	Name	Part No.	Industry Ref. No.	Tungsten Diameter
1	Back Cap -Long	KP4745-L (2 Pack) / KP4745-L-B10 (10 Pack)	41V24	Long
2	Back Cap -Medium	KP4745-M (2 Pack) / KP4745-M-B10 (10 Pack)	41V35	Medium
3	Back Cap -Short	KP4745-S (2 Pack) / KP4745-S-B10 (10 Pack)	41V33	Short

FOR CALIBER WATER-COOLED TIG TORCHES



Item	Name	Part No.	Industry Ref. No.	Tungsten Diameter
1	Back Cap -Long	KP4746-L (2 Pack) / KP4746-L-B10 (10 Pack)	57Y02	Long
2	Back Cap -Medium	KP4746-M (2 Pack) / KP4746-M-B10 (10 Pack)	57Y03	Medium
3	Back Cap -Short	KP4746-S (2 Pack) / KP4746-S-B10 (10 Pack)	57Y04	Short

INSULATOR, STANDARD



FOR CALIBER AIR & WATER-COOLED TIG TORCHES

Name	Part No.	Industry Ref. No.
Insulator, Standard	KP4747-ST (2 Pack) / KP4747-ST-B10 (10 Pack)	598882

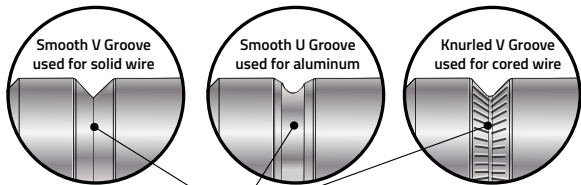
FOR CALIBER 17/18/26 TORCHES

Name	Part No.	Industry Ref. No.
Insulator, Standard	KP4748-ST (2 Pack) / KP4748-ST-B10 (10 Pack)	598882
Insulator, Gas Lens (not pictured)	KP4747-ST (2 Pack) / KP4747-ST-B10 (10 Pack)	598882

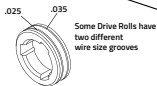
Drive Rolls

Use the table to locate the letter reference code for a particular Wire Feed Welder or Wire Feeder's drive system. Turn to the page with that letter code to identify replacement kits and parts that are available for that wire drive system. Pay special attention to the overall rating of the specific machine. Do not exceed the machine's ratings (wire, type, wire size, and welding amperage).

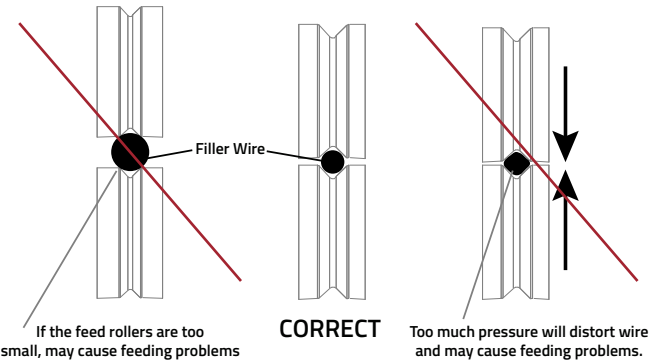
- Do not exceed the wire sizes and types recommended for use with your welder.
- Do not exceed the welding output rating of your machine.



IMPORTANT!
Size facing outward must match the welding wire size.



Because flux-cored wire is softer than solid wire, knurled drive rolls provide a good "bite" on the wire without compressing and deforming it — which could happen if standard drive rolls are used.



INDUSTRIAL WIRE FEEDERS

AutoDrive 4R90	J	SP-100-I.....	C
AutoDrive S.....	H1	SP-100T	C
AutoDrive SA	H2	SP-125 Plus.....	D
AutoDrive 4R100.....	J	SP-130T	C
AutoDrive 4R220	J	SP-135 Plus.....	D
Activ8™	K1	SP-135T.....	C
Activ8X.....	K1	SP-140-I.....	C
Activ8X CE.....	K1	SP-140T.....	P1
Bester Handy MIG.....	B2	SP-150	E
Cruiser (Tractor)	L	SP-170.....	C
DH10	K2	SP-170-I	C
FlexFeed 74 HT [4 Roll]	K2	SP-170T	C
Flex Feed 84	K2	SP-175 Plus.....	D
LF-72 [2 Roll].....	K1	SP-175T.....	C
LF-74 [4 Roll]	K2	SP-180T	P1
LN-10 [4 Roll].....	J	SP-200.....	E
LN-15	K1	SP-250 & SP-255	F
LN-23P.....	E	STT-10 [4 Roll].....	J
LN-25	E	SYNERGIC 7 [4 Roll].....	I
LN-25 PRO	K1	Wire-Matic 250 & 255	F
LN-25 PRO Dual Power.....	K1		
LN25X	K1		
LN25X CE	K1		
LN25X Extra Torque	K1		
LN-35	E		
LN-7 [2 Roll]	E		
LN-7 GMA [2 Roll]	E		
LN-7 GMA [4 Roll]	I		
LN-742 [2 Roll]	E		
LN-742 [4 Roll]	I		
LN-8 [2 Roll].....	G		
LN-9 [4 Roll]	G		
LN-9 GMA [2 Roll].....	E		
LN-9 GMA [4 Roll].....	I		
LT-56	M		
LT-7	M		
MAXsa 22.....	L		
MAXsa 29.....	L		
NA-3.....	L		
NA-4	L		
NA-5	L		
PF-10S	L		
Power Feed 10 [4 Roll]	J		
Power Feed 10M [4 Roll]	J		
Power Feed 10R [4 Roll]	J		
Power Feed 11 [4 Roll]	J		
Power Feed 15M.....	K1		
Power Feed 25M	K1		
Power Feed 84	K2		
Power Feed 84 Dual.....	K2		
Power Wave C300	K1		
Power Wave C350.....	K1		
POWER MIG 140C.....	N		
POWER MIG 140MP	P2		
POWER MIG 140T.....	N		
POWER MIG 180C.....	N		
POWER MIG 180T	N		
POWER MIG 180 Dual	N		
POWER MIG 200	K1		
POWER MIG 210	N		
POWER MIG 215	K1		
POWER MIG 215XT.....	K1		
POWER MIG 216	K1		
POWER MIG 255.....	K1		
POWER MIG 255C.....	K1		
POWER MIG 255XT	K1		
POWER MIG 256.....	K1		
POWER MIG 260	K1		
POWER MIG 300	K1		
POWER MIG 350MP	K1		
SP-100	D		

RETAIL WIRE FEED WELDERS

Core Pak 125 [Code 11550].....	P1
Core Pak 125 [Code 11639].....	P2
Easy-Core 125 [Code 11503]	P1
Easy-Core 125 [Code 11633]	P2
Easy-MIG 140 [Code 11504].....	P1
Easy-MIG 140 [Code 11637]	P2
Easy-MIG 180	P1
Handy Core.....	B1
Handy Core 100 (Arcweld Brand)	A
Handy MIG.....	B2
Handy MIG 101 (Arcweld Brand)	A
Handymig 170i.....	C
Mega Force 140IMP.....	P2
MIG Pak 10.....	C
MIG Pak 15	C
MIG Pak 140 [Code 11440]	P1
MIG Pak 140 [Code 11636]	P2
MIG Pak 140MP	P2
MIG Pak 180	P1
MIG Pak HD	B1
Pro 100	C
Pro 155.....	C
Pro-Core 100	C
Pro Core 125 [Code 11300].....	P1
Pro Core 125 [Code 11631].....	P2
Pro-MIG 135	C
Pro-MIG 140 [Code 11288 Only]	C
Pro-MIG 140 [Code 11173]	P1
Pro MIG 140 [Code 11634].....	P2
Pro-MIG 175	C
Pro-MIG 180	P1
Quick Weld.....	B1
Weld-Pak 100.....	C
Weld-Pak 100HD	C
Weld-Pak 125	C
Weld-Pak 125HD [Code 11302].....	P1
Weld-Pak 125HD [Code 11632].....	P2
Weld-Pak 140HD [Code 11303]	P1
Weld-Pak 140HD [Code 11635]	P2
Weld-Pak 155	C
Weld-Pak 175	C
Weld-Pak 180HD.....	P1
Weld-Pak 3200HD	C
Weld-Pak 5000HD.....	C
Weld-Pak HD	B1
Work Pak 125 [Code 11506].....	P1
Work Pak 125 [Code 11638].....	P2

Drive Rolls

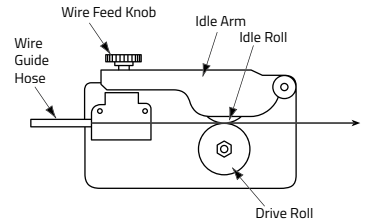
A - Handy Core 100 (Arcweld Brand), Handy MIG 101 (Arcweld Brand)

Wire Size	Type	Drive Roll	Idle Arm	Idle Roll	Wire Feed Knob	Wire Guide Hose	Gun & Cable Assembly
.023-.035"	Groove 1: .023-.025" Wire Groove 2: .030-.035" Wire	9SS24355-14	9SS24355-7	9SS24355-6	9SS24355-9	9ST10642-120	9SS24355-16

PARTS FOR 9SS24355-16 GUN & CABLE ASSEMBLY

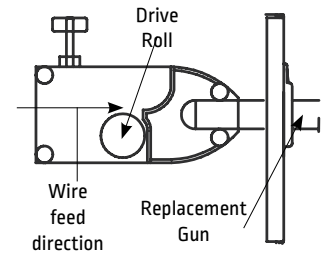
Description	Part Number	Notes
Contact Tips		
.023-.025" Wire	KP11-25	10/Pkg
.030" Wire	KP11-30	10/Pkg
.035" Wire	KP11-35	10/Pkg
Gas Nozzle	KP2080-2*	
Insulated Gun Tube	9SS24355-27	
Gun Trigger	9SS24355-23	
Cable Liner .023-.030"	KP2080-1*	

* Discontinued. Available until stock is depleted.



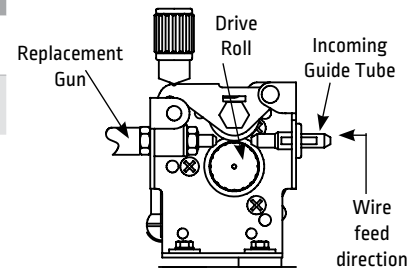
B1 - Handy Core, MIG Pak HD, Quick Weld, Weld-Pak HD

Wire Size	Type	Drive Roll(s)	Replacement Gun & Cable Assembly
.035" Cored Wire	Groove 1: .035" Knurled Groove 2: .035" Knurled	KP2243-035	9SS25532-11 (FCAW) 9SS25695-11 (GMAW)



B2 - Handy MIG, Bester Handy MIG

Wire Size	Type	Drive Roll(s)	Incoming Guide Tube	Replacement Gun & Cable Assembly
.023-.030" Solid .035" Cored Wire	Groove 1: .023-.030" Solid Groove 2: .035" Cored Wire	KP2200-1	9SS25351-6	9SS25351-11 (GMAW)

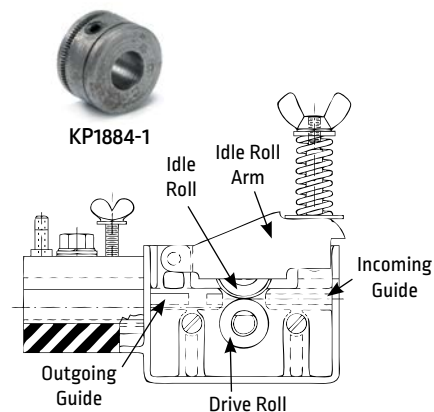


PARTS FOR 9SS25532-11 GUN & CABLE ASSEMBLY (B-1 WIRE DRIVE), 9SS25695-11 GUN & CABLE ASSEMBLY (B-1 WIRE DRIVE) 9SS25351-11 GUN & CABLE ASSEMBLY (B-2 WIRE DRIVE)

Description	Part Number	Notes
Contact Tips:		
.023-.025" Wire	KP11-25	10/Pkg
.030" Wire	KP11-30	10/Pkg
.035" Wire	KP11-35	10/Pkg
Diffuser:		
Gas Nozzle:		
Flux Core (Gasless)	KP1939-1	
Gas Nozzle	KP21-50-F	
Gun Trigger	9SS25351-51	

C - SP-100-I, SP-100T, SP-130T, SP-135T, SP-140-I, SP-170, SP-170-I, SP-170T, SP-175T, Handymig 170i, MIG Pak 10, MIG Pak 15, Pro 100, Pro 155, Pro-Core 100, Pro-MIG 135, Pro-MIG 140 (Code 11288 Only), Pro-MIG 175, Weld-Pak 100, Weld-Pak 100HD, Weld-Pak 125, Weld-Pak 155, Weld-Pak 3200HD, Weld-Pak 5000HD, Weld Pak 175

Wire Size	Type	Drive Roll(s)	Idle Arm	Idle Roll	Incoming Guide Tube	Outgoing Guide Tube
.023-.030" Solid .035" Cored	Groove 1: .023-.025" Smooth Groove 2: .030-.035" Knurled	KP1884-1	L7562	M9300-55	KP2009-10	KP2009-10
.023-.030" Solid .035" Cored	Groove 1: .023-.025" Smooth Groove 2: .030-.035" Smooth	KP665-035				
.035"-.045" Cored	Groove 1: .035-.045" Knurled Groove 2: .035-.045" Knurled	KP665-045C ⁽¹⁾				
.035" Aluminum	Groove 1: .035" U Groove Groove 2: .035" U Groove	M19631 ⁽²⁾				



(1) Also included with K549-2 Innershield Welding Kit. (2) Only available with K664-2 Aluminum Welding Kit

Drive Rolls

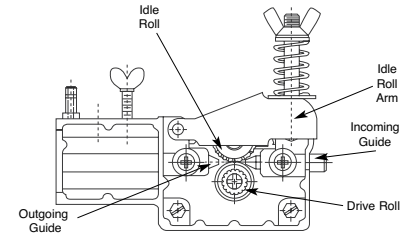
D - SP-100, SP-125 Plus, SP-135 Plus, SP-175 Plus

DRIVE ROLL KITS

Groove 1 Wire Size	Groove 1 Type	Groove 2 Wire Size	Groove 2 Type	Drive Roll Kit #
.023-.025"	V-groove	.030-.035"	V-groove	KP1881-1
.035"	Knurled	.035"	Knurled	KP666-035C
.035-.045"	Knurled	.035-.045"	Knurled	KP666-045C(1)

Machine	Incoming Guide	Outgoing Guide	Idle Roll Arm	Idle Roll
SP100 (below code #10000)	KP2006-1	KP2007-1	9SL7562	9SM9300-55*
All other Models & Codes	KP2141-1	KP2140-1		

*For .035 Aluminum Wire - 9S24219



E - LN-23P, LN-25, LN-35, LN-7 (2 Roll), LN-7 GMA (2 Roll), LN-742 (2 Roll), LN-9 GMA (2 Roll), SP-150, SP-200

KP653 DRIVE ROLL KITS*

Wire Size	Type	Drive Roll Kit #	Incoming Guide	Outgoing Guide	Outgoing Guide Insert
.023-.025"	V-groove	KP653-025S	-	KP2125-1	KP2124-1
.030"	V-groove	KP653-030S	-	KP2125-1	KP2124-1
.035"	Knurled	KP653-035C	KP2139-3	KP2125-1	KP2124-1
.035"	V-groove	KP653-035S	KP2139-3	KP2125-1	KP2124-1
.045-.052"	Knurled	KP653-052C	KP2139-3	KP1999-1	KP2124-3
.045-.052"	V-groove	KP653-052S	KP2139-3	KP1999-1	KP2124-3
1/16"	Knurled & V-groove	KP653-1/16	KP2139-5	KP2125-3	KP2124-5
.068-3/32"	Knurled	KP653-3/32	KP2139-8	KP2125-5	KP2124-8
7/64"	Hardfacing	KP653-7/64H	KP2139-8	-	-
0.12	Knurled	KP653-120C	-	-	-



KP653-035C



KP654-1/16A

KP654 DRIVE ROLL KITS*

Wire Size	Type	Drive Roll Kit #	Incoming Guide	Outgoing Guide	Outgoing Guide Insert
.035"	Aluminum	KP654-035A	-	KP2125-1	KP2124-1
3/64"	Aluminum	KP654-3/64A	KP2139-3	KP1999-1	KP2124-1
1/16"	Aluminum	KP654-1/16A	KP2139-5	KP2125-3	KP2124-5

*U-Groove drive rolls ** These kits are to be discontinued. Kits and parts will be available until stock is depleted.

Note: All Clutched drive roll kits include many other parts that may be available for sale individually. They also include parts for 4 roll drive systems. See IM638 for details.

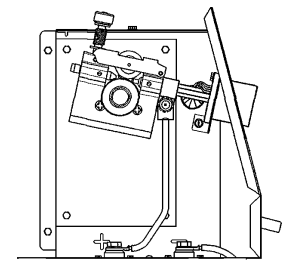
F - SP-250, SP-255, Wire-Matic 250 & 255

KP674 DRIVE ROLL KITS

Wire Size	Type	Qty Inc	Drive Roll Kit #	Incoming Guide	Outgoing Guide
.025"-.035"	Solid	1	KP674-035S	KP2139-3	M15812-3 (2)
.035"	Cored	2	KP674-035C*	KP2139-3	M15812-3 (2)
.045"	Solid	1	KP674-045S	KP2139-3	M15812-3 (2)
.045"	Cored	2	KP674-045C*	KP2139-3	M15812-3 (2)
3/64"	Aluminum	1	KP674-3/64A	KP2139-3	M15812-3 (2)

*Split drive roll design

(2) Use for SP250, SP250-1 or SP255. KP2053-2 for Wire-Matic has been discontinued.



G - LN-8 (2 Roll), LN-9 (2 Roll), NA-5R (2 Roll),

Wire Size	Type	Drive Roll Kit #	Idle Roll Assembly	Incoming Guide Tube	Outgoing Guide Tube	Outgoing Guide Insert
.030-.035"	Solid	KP502-035	S12722-035	KP2123-1	KP2117-1	KP2118-1
.045-.052"	Solid	KP502-052	S12722-052	KP2123-2	KP2117-2	KP2118-2
.045-.052"	Cored	KP502-052C	S12722-052	KP2123-2	KP2117-2	KP2118-2
1/16"	Solid	KP502-1/16	S12722-1/16	KP2123-3	KP2117-3	KP2118-3
1/16"	Cored	KP502-1/16C	S12722-1/16	KP2123-3	KP2117-3	KP2118-3
.068-3/32"	Cored	KP502-3/32	S12722-3/32	KP2123-5	KP2119-2	KP2120-2
7/64-.120"	Cored	KP502-120	S12722-120	KP2123-4	KP2119-1	KP2120-1
7/64"	Hardfacing	KP502-7/64H	S12722-7/64H	KP2123-4	KP2119-1	KP2120-1

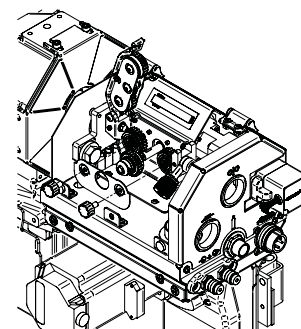


Idle Roll Assembly

Drive Rolls

H1 - AutoDrive S Feeder

Wire Size	Type	Drive Roll Kit #	GROOVED DRIVE ROLL	Main Drive Gear	Smooth Drive Roll
.035" (0.9mm)	Steel	KP4335-035S	S31417-035S	S31418-1	S31419
.040" (1.0mm)	Steel	KP4335-040S	S31417-040S	S31418-1	S31419
.045" (1.1mm)	Steel	KP4335-045S	S31417-045S	S31418-1	S31419
.047" (1.2mm)	Steel	KP4335-047S	S31417-047S	S31418-1	S31419
.035" (0.9mm)	Cored	KP4335-035C	S31417-035C	S31418-1	S31419
.040" (1.0mm)	Cored	KP4335-040C	S31417-040C	S31418-1	S31419
.045" (1.1mm)	Cored	KP4335-045C	S31417-045C	S31418-1	S31419
.047" (1.2mm)	Cored	KP4335-047C	S31417-047C	S31418-1	S31419



H2 - AutoDrive SA Push Feeder

Wire Size	Type	Drive Roll Kit #	Grooved Drive Roll	Main Drive Gear	Smooth Drive Roll	Height Gauge
.035" (0.9mm)	Steel	KP4335-035S	S31417-035S	S31418-1	S31419	M25236
.040" (1.0mm)	Steel	KP4335-040S	S31417-040S	S31418-1	S31419	M25236
.045" (1.1mm)	Steel	KP4335-045S	S31417-045S	S31418-1	S31419	M25236
.035" (0.9mm)	Aluminum	KP4335-035A	S31417-035A	S31418-1	S31419	
.040" (1.0mm)	Aluminum	KP4335-040A	S31417-040A	S31418-1	S31419	
3/64" (1.2mm)	Aluminum	KP4335-364A	S31417-364A	S31418-1	S31419	
1/16" (1.6mm)	Aluminum	KP4335-116A	S31417-116A	S31418-1	S31419	

H2 - AutoDrive SA Pull Feeder

Wire Size	Type	Drive Roll Kit #	Grooved Drive Roll	Torx Key	Torx Screw	Height Gauge
.035" (0.9mm)	Steel	KP4413-035S	S29654-4	T15184	S25930-9	M25236
.040" (1.0mm)	Steel	KP4413-040S	S29654-5	T15184	S25930-9	M25236
.045" (1.1mm)	Steel	KP4413-045S	S29654-6	T15184	S25930-9	M25236
.035" (0.9mm)	Aluminum	KP4413-035A	S29654	T15184	S25930-9	M25236
.040" (1.0mm)	Aluminum	KP4413-040A	S29654-9	T15184	S25930-9	M25236
3/64" (1.2mm)	Aluminum	KP4413-364A	S29654-2	T15184	S25930-9	M25236
1/16" (1.6mm)	Aluminum	KP4413-116A	S29654-3	T15184	S25930-9	M25236

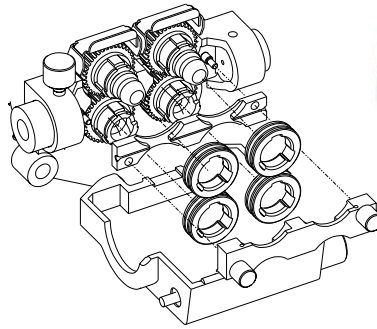
I - LN-7 GMA (4 Roll), LN-742 (4 Roll), LN-9 GMA (4 Roll), SYNERGIC 7 (4 Roll)

Wire Size	Type	Drive Roll Kit #	Idle Roll Assembly	Incoming Guide Tube	Outgoing Guide Tube	Outgoing Guide Insert
.035 - .040"	Solid	KP655-035S	-	-	KP2125-1	KP2124-1
.045 - .052"	Cored	KP655-052C	-	KP2114-2	KP1999-1	KP2124-3
.045 - .052"	Solid	KP655-052S	-	KP2114-2	KP1999-1	KP2124-3
1/16"	Solid/Cored	KP655-1/16	-	-	KP2125-3	KP2124-5
.068 - 3/32"	Cored	KP655-3/32	-	KP655-3/32	KP2125-5	KP2124-8
7/64 - .120"	Cored	KP655-120C*	T13467-120F	-	-	-

Drive Rolls

J AutoDrive 4R90, LN-10 (4 Roll), AutoDrive 4R100, AutoDrive 4R220, Power Feed 10 (4 Roll), Power Feed 10M (4 Roll), Power Feed 10R (4 Roll), Power Feed 11 (4 Roll), STT-10 (4 Roll)

Wire Size	Type	Drive Roll Kit #
.023 - .030"	Solid	KP1505-030S
.035"	Solid	KP1505-035S
.030 - .035"	Cored	KP1505-035C
.040	Solid	KP1505-.040S
.040 - .045"	Solid	KP1505-.045S
.040 - .045"	Cored	KP1505-.045C
.052"	Solid	KP1505-052S
.052"	Cored	KP1505-052C
1/16"	Solid	KP1505-1/16S
1/16"	Cored	KP1505-1/16C
.068 - .072"	Cored	KP1505-068
5/64"	Cored or Solid	KP1505-5/64
3/32"	Cored or Solid	KP1505-3/32
7/64"	Cored or Solid	KP1505-7/64
7/64"	Hardfacing wire	KP1505-7/64H
.120	Cored or Solid	KP1505-120
.040 - .045"	Drive Roll Kit	KP1505-1



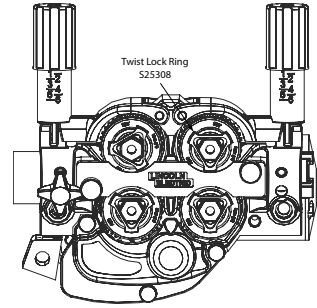
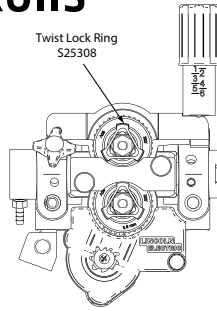
KP1507-035A

KP1505 drive roll kits include four drive rolls and one inner wire guide.

KP1507 DRIVE ROLL KITS - Aluminum

Wire Size	Type	Drive Roll Kit #	Inner Wire Guide	Outer Wire Guide	Conduit Bushing
.035"	Aluminum	KP1507-035A	M18796-1	KP2071-2	S23750-1
.040"	Aluminum	KP1507-040A	M18796-1	KP2071-2	S23750-1
3/64"	Aluminum	KP1507-3/64A	M18796-2	KP2071-2	S23750-1
1/16"	Aluminum	KP1507-1/16A	M18796-3	KP2071-2	S23750-1
3/32"	Aluminum	KP1507-3/32A	M18796-4	KP2071-2	S23750-2

Drive Rolls



K1 - Activ8, Activ8X, Activ8X CE, LF-72 (2 Roll), LN-15, LN-25 PRO, LN-25 PRO Dual Power, LN-25X, LN25X CE, LN25X Extra Torque, Power Feed 15M, Power Feed 25M, Power Wave C300, Power Wave C350, POWER MIG 200, POWER MIG 215, POWER MIG 215XT, POWER MIG 216, POWER MIG 255, POWER MIG 255C, POWER MIG 255XT, POWER MIG 256, POWER MIG 260, POWER MIG 300, POWER MIG 350MP

KP1696 DRIVE ROLL KITS - Solid Steel

Wire Size	Type	Drive Roll Kit #
.023-.030	Solid	KP1696-030S
.035	Solid	KP1696-035S
.035 / .045	Solid	KP1696-1
.040	Solid	KP1696-2
1/16	Solid	KP1696-1/16S
.045	Solid	KP1696-045S
.052	Solid	KP1696-052S



KP1696 drive roll kits include two drive rolls and one inner wire guide.

KP1697 DRIVE ROLL KITS - Cored

Wire Size	Type	Drive Roll Kit #
.035"	Cored	KP1697-035C
.045"	Cored	KP1697-045C
.052"	Cored	KP1697-052C
1/16"	Cored	KP1697-1/16C
.068"	Cored	KP1697-068
5/64"	Cored	KP1697-5/64
3/32"	Cored	KP1697-3/32



KP1697 drive roll kits include two drive rolls and one inner wire guide. NOT INCLUDED WITH KIT Outer Guide KP2071-3

KP1697 DRIVE ROLL KITS - Aluminum

Wire Size	Type	Drive Roll Kit #	Included with Kit	
			Outer Guide	Inner Guide
.035"	Aluminum*	KP1695-035A	KP2071-4	KP2173-1
.040"	Aluminum	KP1695-040A	KP2071-4	KP2173-2
3/64"	Aluminum	KP1695-3/64A	KP2071-4	KP2173-2
1/16"	Aluminum	KP1695-1/16A	KP2071-4	KP2173-3
3/32"	Aluminum	-	KP2071-4	KP2173-4

*.035 Aluminum recommended for Push Pull systems only.



KP1695-035A

K2 - FlexFeed 74 HT (4 Roll), LF-74 (4 Roll), Flex Feed 84, DH10, Power Feed 84, Power Feed 84 Dual

KP1505 DRIVE ROLL KITS - Stainless Steel

Wire Size	Type	Drive Roll Kit #
.023-.030"	Solid	KP1505-030S
.035"	Solid	KP1505-035S
.040"	Solid	KP1505-040S
1/16"	Solid	KP1505-1/16S
.040 / .045"	Solid	KP1505-045S
.052"	Solid	KP1505-052S

KP1505 drive roll kits include four drive rolls and one inner wire guide.

KP1505 DRIVE ROLL KITS - Cored Drive Roll

Wire Size	Type	Drive Roll Kit #
.030 / .035"	Cored	KP1505-035C
.040 / .045"	Cored	KP1505-045C
.052"	Cored	KP1505-052C
1/16"	Cored	KP1505-1/16C



KP1505 drive roll kits include four drive rolls and one inner wire guide. NOT INCLUDED WITH KIT Outer Guide KP2071-1

KP1505 DRIVE ROLL KITS - Solid Steel or Cored Drive Roll

Wire Size	Type	Drive Roll Kit #
.068 / .072"	Cored/Solid	KP1505-068
5/64"	Cored/Solid	KP1505-5/64
3/32"	Cored/Solid	KP1505-3/32
7/64"	Cored/Solid	KP1505-7/64
7/64"	Hardfacing	KP1505-7/64H

KP1505 drive roll kits include four drive rolls and one inner wire guide. NOT INCLUDED WITH KIT Outer Guide KP2071-1

KP1507 DRIVE ROLL KITS - Aluminum

Wire Size	Type	Drive Roll Kit #	Included with Kit		
			Inner Wire Guide	Outer Wire Guide	Conduit Bushing
.035"	Aluminum*	KP1507-035A	M18796-1	KP2071-2	S23750-1
.040"	Aluminum	KP1507-040A	M18796-1	KP2071-2	S23750-1
3/64"	Aluminum	KP1507-3/64A	M18796-2	KP2071-2	S23750-1
1/16"	Aluminum	KP1507-1/16A	M18796-3	KP2071-2	S23750-1
3/32"	Aluminum	KP1507-3/32A	M18796-4	KP2071-2	S23750-2

*.035 Aluminum recommended for Push Pull systems only.



KP1507-035A

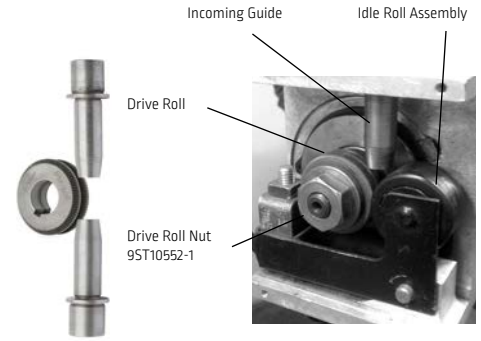
Drive Rolls

L - Cruiser [Tractor], MAXsa 22, MAXsa 29, NA-3, NA-4, NA-5, PF-10S

KP1899 DRIVE ROLL KITS

Wire Size	Type	Drive Roll Kit #	Qty Req.	Incoming Guide	Outgoing Guide	Drive Roll Key	Idle Roll Assembly
3/32-7/32"	Wires	KP1899-1	2	KP2116-2	KP1963-1	9SM8776-5	9SS12475
1/16-3/32"	Wires	KP1899-2	2	-	-		
.035-.052"	Solid Wire	KP1899-3	1	-	-		
.045-.052"	Cored Wire	KP1899-4	2	-	-		

KP1899-X Drive Roll Kits include one drive roll, one incoming tube and one outgoing tube.

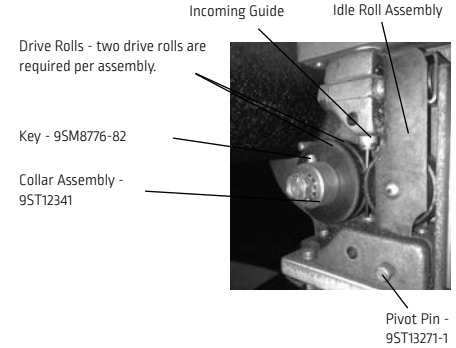


M - LT-56, LT-7

Parts Sold Individually

Wire Size	Type	Drive Roll	Qty Incd.	Qty Req.	Incoming Guide	Outgoing Tube	Idle Roll Assembly
.052 -1/16"	Solid & Cored	KP2268-1	1	2	KP1984-1	-	9SS16666-1
.068 -3/32"	Solid & Cored	KP2268-2	1	2	KP1984-1	-	
3/32 -3/16"	Solid & Cored	KP2268-3	1	2	KP1984-1	KP1985-1	
.045"-.052"	Solid & Cored	KP2268-4	1	2	KP1984-1	-	

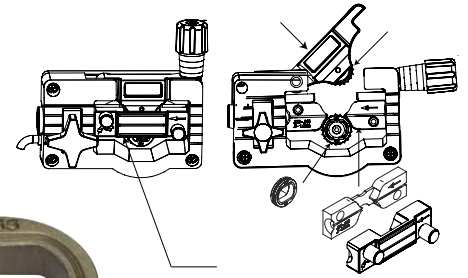
*Each Drive Roll KP# includes one drive roll - two drive rolls are required per assembly. These Drive Rolls are a split, knurled design.



N - POWER MIG 140C, POWER MIG 140T, POWER MIG 180C, POWER MIG 180T, POWER MIG 180 Dual, POWER MIG 210

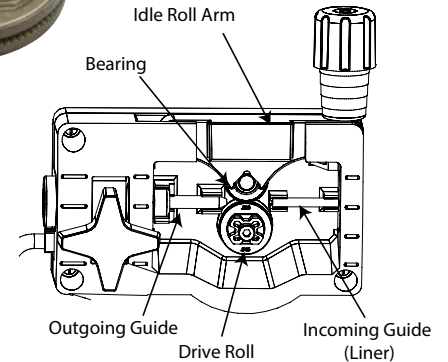
Wire Size	Type	Drive Roll Kit #	Incoming Guide	Outgoing Guide
.025"/.030"	Solid	KP2529-1	KP2531-1	S26899
.035"	Solid	KP2529-2	KP2531-1	S26899
.030"/.045"	Cored	KP2529-3	KP2531-2	S26899

Wire Guide Knob included as part of S26899 Outer Wire guide.



P1 - SP-140T, SP-180T, Core Pak 125 [Code 11550], Easy-Core 125 [Code 11503], Easy-MIG 140 [Code 11504], Easy-MIG 180, MIG Pak 140 [Code 11440], MIG Pak 180, Pro Core 125 [Code 11300], Pro-MIG 140 [Code 11173], Pro-MIG 180, Weld-Pak 125HD [Code 11302], Weld-Pak 140HD [Code 11303], Weld-Pak 180HD, Work Pak 125 [Code 11506]

Wire Size	Type	Drive Roll Kit #	Incoming/Outgoing Guide Kit
.025"/.030"	Solid	KP2529-1	KP2530-1
.035"	Solid	KP2529-2	KP2530-1
.030"/.045"	Cored	KP2529-3	KP2530-1



P2 - Core Pak 125 [Code 11639], Easy-Core 125 [Code 11633], Easy-MIG 140 [Code 11637], MIG Pak 140 [Code 11636], Pro Core 125 [Code 11631], Pro MIG 140 [Code 11634], Weld-Pak 125HD [Code 11632], Weld-Pak 140HD [Code 11635, 12103], Work Pak 125 [Code 11638], MIG Pak 140MP, Mega Force 140iMP, Pro MIG 180 [Code 11937], POWER MIG 140MP

Wire Size	Type	Drive Roll Kit #
.025"	Solid	KP2948-1*
.030"-.035"	Solid	KP2948-1*
.030"-.035"	Cored	KP2948-1*
.035"-.045"	Knurled	KP3285-1*

* Key included with kit.

Not Included with Kit:

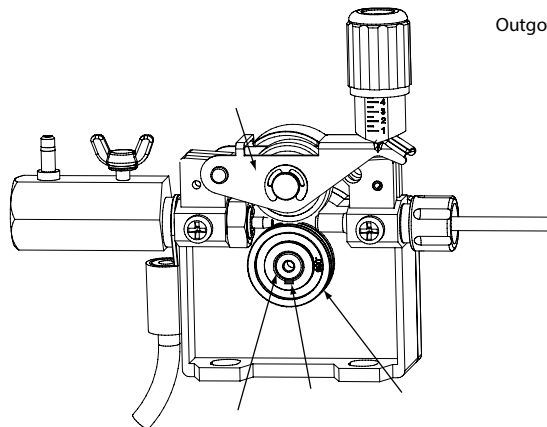
Wire Guide Kit

KP3199-1

Wire Drive Spare Parts Kit

KP3909-1

(Includes Key, Retaining Knob, & Gun Retaining Wing Screw)



Engine Service Kits

Kubota

Service Kit for Kubota Engine Model V1505 K3599-1

Compatible Machines:

- Cross Country 300
- Vantage 322
- Vantage 300
- Vantage 400-I
- Vantage 410



Service Kit for Kubota Engine Model D1503 K3599-2

Compatible Machines:

- SAE-300MP
- SAE-300 HE
- Classic 300 MP
- Classic 300 HE



Service Kit for Kubota Engine Model V3600T K3599-3

Compatible Machines:

- Air Vantage 500



Engine Service Kits

Perkins

Service Kit for Perkins Engine Models 404D-22, 404D-22T, & 403-15T K3598-1

Compatible Machines:

- SAE-300 MP
- SAE-300 HE
- Classic 300 MP
- Vantage 400
- Vantage 500-I
- Vantage 500 CE
- Vantage 500



Engine Service Kits

Deutz

Service Kit for Deutz Engine Models D2011L03I & D2011L04I K3558-1

Compatible Machines:

- Fleet 500
- Big Red 500
- Vantage 500



Service Kit for Deutz Engine Model F3L912 K3558-2

Compatible Machines:

- Fleet 650
- Big Red 600



Service Kit for Deutz Engine Model D2.9L4 K3558-3

Compatible Machines:

- Vantage 435
- Vantage 520 SD



Service Kit for Deutz Engine Model TD2.9L4 [SAE] K3558-4

Compatible Machines:

- SAE-500
- SAE-500 Severe Duty



Service Kit for Deutz Engine Model TD2.9L4 [Vantage] K3558-5

Compatible Machines:

- Vantage 549
- Vantage 566
- Vantage 600 SD
- Air Vantage 566
- Air Vantage 600 SD
- Air Vantage 566 Hydraulic
- Air Vantage 600 SD Hydraulic

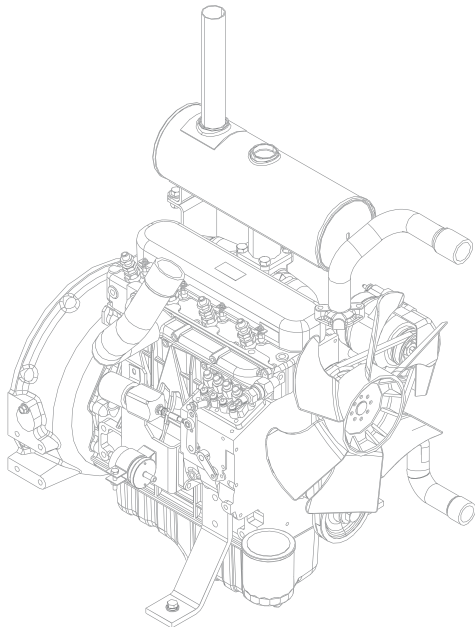


KUBOTA® SERVICE PARTS

Lincoln Electric now offers service parts for the Kubota® engine V1505 used on the

Vantage® 300 & Vantage® 400-I.

Original Parts from one source.



1 Oil Filters

9SS30694-1

Kubota® HH160-32093 Oil Filter

2 In-Line Fuel Filter

9SS30694-2

Kubota 12581-43012 In-Line Fuel Filter

3 Filter, Water Separator / Fuel Sediment Element

9SS30694-3

Kubota 15831-43380 Filter, Water Separator/Fuel Sediment Element

4 V-Belt

9SS30694-4

Kubota 16282-97010 V-Belt, Fan Drive, 37.5-in.

5 Exhaust Gasket

9SS30694-5

Kubota 15263-12370 Exhaust Gasket

6 Air Filter

9SM19801-1A

Air Filter

KOHLER® TUNE UP KIT

K3494-1

Routine engine maintenance kit for
Kohler CH23S, CH730, & ECH740

Ranger 250 GXT
Ranger 305G
Ranger 225



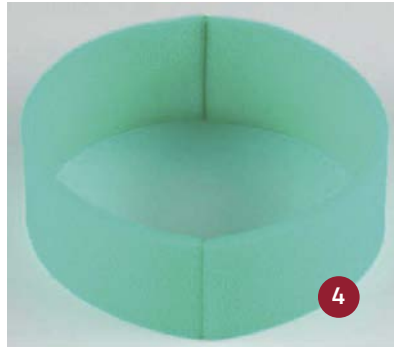
1



2



3



4



5



6

1 Spark Plug
Kohler® 12 132 02

4 Air Filter Pre-Cleaner
Kohler® 24 083 05

2 In-Line Fuel Filter
9SS30694-2
Kohler® 24 050 13

5 Oil
Kohler® 25 357 06

3 Air Filter
Kohler® 24 083 03

6 Oil Filter
Kohler® 12 050 01

Kohler is a registered trademark of Kohler Corporation

GENUINE FILTER REPLACEMENT

- STEP 1** Select your machine
- STEP 2** Identify the filter indicator location and the filter status
- STEP 3** Select the appropriate Genuine Filter Replacement

 <p>MINIFLEX® Portable Welding Fume Extractor K3972-3 K2497-18</p>	Top Control Panel	Activated Carbon Filter (optional) [KP2389-1]	LongLife-H Filter [KP2390-1]	Pre-Filter [KP2390-3]	HEPA Filter [KP2390-4]	Filter One-Pak® [KP2390-5]
	Indicator blinks					

 <p>MOBIFLEX® 200-M Welding Fume Extraction K1653-4 K1653-5 K2497-12</p>	Front Control Panel	MERV 14 Filter [KP1673-1]	MERV 16 (HE, Nano) Filter [KP1673-9]	Activated Carbon Filter (optional and fits over main filter) [KP1852-1]	Pre-Filter [KP1673-5]
	Gauge is red while unit is in operation				

 <p>MOBIFLEX® 400-MS Welding Fume Extraction K1741-3 K1741-4 K2497-14</p>	Front Control Panel	MERV 14 Filter [KP1673-2]	MERV 16 (HE, Nano) Filter [KP1673-10]	Pre-Filter [KP1673-6]
	Unable to obtain pressure below 1500 Pa after several cleaning attempts Indicator blinks			

 <p>STATIFLEX® 200-M Weld Fume Extraction Base Unit K1654-4 K1654-5 K1654-6</p>	Front Control Panel	MERV 14 Filter [KP1673-1]	MERV 16 (HE, Nano) Filter [KP1673-9]	Activated Carbon Filter (optional and fits over main filter) [KP1852-1]	Pre-Filter [KP1673-5]
	Gauge is red while unit is in operation				

 <p>STATIFLEX® 400-MS Weld Fume Extraction Base Unit K1742-1 K1742-2</p>	Front Control Panel	MERV 14 Filter [KP1673-2]	MERV 16 (HE, Nano) Filter [KP1673-10]	Pre-Filter [KP1673-6]
	Unable to obtain pressure below 1500 Pa after several cleaning attempts Indicator blinks			

Order replacement filters at weldfumefilters.com



STATIFLEX® 800
Weld Fume Extraction Base Unit

K3680-1
K3680-2
K3681-1
K3681-2

Unable to obtain pressure below 1700 Pa after several cleaning attempts

Indicator light on front panel.

MERV 16 (HE) Filter - Set of 2 (KP2752-16)



Pre-Filter (KP1673-6)



DOWNFLEX® 100-NF
Weld Fume Downdraft Table

K2751-9

Suction performance is lower than normal

Spark Arrester - Set of 2 (optional) (KP2752-12)



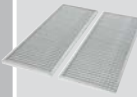
DOWNFLEX® 200-M
Weld Fume Downdraft Table

K2751-10
K2751-13
K2751-14

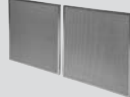
Differential pressure exceeds 1700 Pa

Gauge points to red

Pre-Spark Arrester - Set of 2 (KP4052-1)



Spark Arrester - Set of 2 (KP2752-12)



MERV 16 (HE) Filter - Set of 2 (KP2752-16)



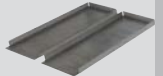
Discharge Filter (KP3551-1)



HEPA Filter⁽¹⁾ (KP2752-14)



Plasma Cutting Prefilter⁽²⁾ - Set of 2 (KP2752-17)



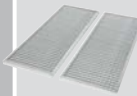
DOWNFLEX® 400-MS/A
Weld Fume Downdraft Table

K2751-11
K2751-15
K2751-16

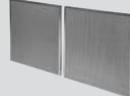
Unable to obtain pressure below 1700 Pa after 5 cleaning attempts

Gauge points to red and alarm buzzer sounds

Pre-Spark Arrester - Set of 2 (KP4052-1)



Spark Arrester - Set of 2 (KP2752-12)



MERV 16 (HE) Filter - Set of 2 (KP2752-16)



Discharge Filter (KP3551-1)



HEPA Filter⁽¹⁾ (KP2752-14)



Plasma Cutting Prefilter⁽²⁾ - Set of 2 (KP2752-17)



CIRCULATOR® OR STATIFLEX® 6000-MS
Central System

Unable to obtain a pressure below 8 in WG or 2000 Pa after several cleaning attempts

Indicator blinks and alarm buzzer sounds

MERV 14 Filter - Set of 2 (KP3367-1)



MERV 16 (HE) Filter - Set of 2 (KP3368-1)



STATIFLEX® FILTER BANK OR STATIFLEX® COMPLETE
Central System

Unable to obtain a pressure below 1700 Pa after several cleaning attempts

Indicator light on cleaning control box

MERV 11 Filter (KP3370-1)



MERV 16 (HE), Nano Filter (KP3370-2)







MERV 16 [PTFE] Filter (KP3370-3)


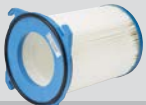



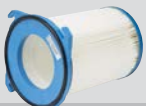
Order replacement filters at weldfumefilters.com


⁽¹⁾ For DownFlex tables equipped with optional HEPA Filter Kit (K2752-1)



⁽²⁾ For DownFlex tables equipped with optional Plasma Cutting Grid (K2752-2)

	<p>PRISM™ Central System</p>	<p>Unable to obtain pressure below 1700 Pa after several cleaning attempts.</p> <p>Indicator light on control panel.</p>	<p>MERV 11 Filter [KP4519-1]</p> 	<p>MERV 16 [HE], Nano Filter [KP4519-2]</p> 	<p>MERV 16 [PTFE] Filter [KP4519-3]</p> 
---	---	--	--	--	---

	<p>X-TRACTOR® 1GC Portable Welding Fume Extractor Unit</p> <p>K652-1 K652-2</p>	<p>Replace after several cleaning cycles (cleaning device is manually operated)</p> <p>Suction performance is lower than normal</p>	<p>Filter [KP2069-1]</p> 
--	--	---	--

	<p>X-TRACTOR® 3A Weld Fume Extractor</p> <p>K3965-1 K3965-2</p>	<p>Replace after several cleaning cycles</p> <p>Suction performance is lower than normal</p>	<p>Filter [KP2069-1]</p> 
---	--	--	--

	<p>X-TRACTOR® 5A Weld Fume Extractor</p> <p>K3966-1 K3966-2</p>	<p>Replace after several cleaning cycles</p> <p>Suction performance is lower than normal</p>	<p>Filter [KP2061-1]</p> 
---	--	--	--

	<p>X-TRACTOR® 8A Weld Fume Extractor</p> <p>K3967-1 K3967-2</p>	<p>Replace after several cleaning cycles</p> <p>Suction performance is lower than normal</p>	<p>Filter [KP3984-1]</p> 
---	--	--	--

Order replacement filters at weldfumefilters.com

