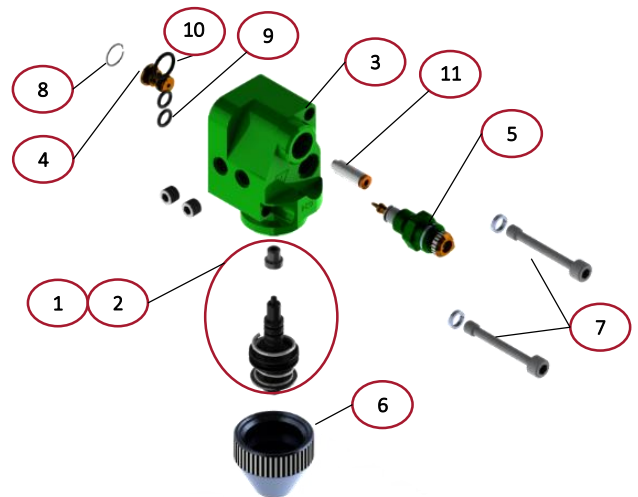


034x Spray Atomizer

Medium Intensity Fine Atomization



Specification

Application

- Extrusion Bar Manifold
- FLEXplate Manifold
- Stand-off Remote Mounted

Body Material

- AL (Anodized)
- DELRIN

Flow Rates (at 60 PSI)

- Air: Up to 13 CFM
- Liquid: 0-1.0 GPM

Filtration & Viscosity

- Liquid: 80 Mesh (200 Micron)
2000 cP (call for custom req.)

Standard Assembly

REF #	DESCRIPTION	LEGACY P/N	A SERIES P/N
1	034 POPPET ASSEMBLY	06954-09	A4005642
2	034 REBUILD KIT	06954-07	A4007124
3	034X BODY	06954-01X	A4007562
4	1.0 GPM MAX FLOW ORIFICE	06954-102A	A4005667
5	0-1.0 GPM ADJUSTABLE METER	06955-08	A4005681\
6	034 POPPET CAP	06954-03	A3027000
7	SS SHCS ¼-20 – CAPTIVE BOLT	55051	A2022499
8	MAX ORIFICE E-CLIP RETAINER	45284	A2020940
9	2-010 VITON O-RING	01004-E	A2023024-2-010
10	2-013 VITON ORING	02077-E	A2023024-2-013
11	1/8T PUSH LOC FITTING	01068-27	A2023649

Order Configuration*

034X -

A B C D E F G

A – MOUNTING STYLE

- 0 – Manifold Mounted
- 1 – Standoff Mounted

B – SPRAY HEAD

- 0 – Without Spray Head
- 2 – Single Head
- 3 – Dual Diverter

C – EXTENSION LENGTH

- 0 – No Extension Tube
 - 1.5A – 1.5" AL Nipple
 - 2.0A – 2.0" AL Nipple
 - 2.5A – 2.5" AL Nipple
 - 3.0A – 3.0" AL Nipple
 - 3.5A – 3.5" AL Nipple
 - 4.0A – 4.0" AL Nipple
- ...More Available

D – SPRAY TIPS (Diameter, SCFM Rating)

- 0 – No Spray Tip (0, 0)
- 2 – Fan Tip (5", 3)
- 3 – Wide Cone (8", 4)
- 5 – Tight Cone (6", 3)

E – MAXIMUM FLOW ORIFICE

- 2 – 1.0 GPM MAX

F – ADJUSTABLE METERING SCREW

- 2 – 0-1.0 GPM MAX
 - 1A – .020 FIXED ORIFICE
- ...More Available

G – BODY MATERIAL

- 1 – AL (Anodized)

To Submit Orders

Email: sales@rimrockcorp.com

Phone: +1.614.471.5926



Lincoln Electric Automation - Columbus
1700 Jetway Blvd
Columbus, OH, 43219