

Technical Garments for Specialist Tasks

WELDING APPARELS CATALOGUE

LINCOLN[®]
ELECTRIC

OVERVIEW

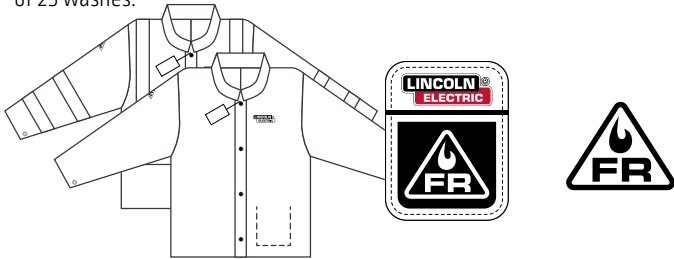
Welding Jackets Overview

Welding apparel has come a long way, it's no longer one size fits all. It's all about technical garments for specialised tasks. Flame retardant cloth helps keep you cool. Heavy duty leather panels resist wear in all the right places.

Tested by a team of professional welders to offer welders comfort and dexterity for heavy duty jobs that require extra spatter protection. With proper research and thorough development we are able to provide products with lightness, softness, ergonomics and durability incomparable in the market.

General Guidelines

Flame Retardant (FR) Cotton apparel is tested to ASTM D6413 for flammability. Lincoln Electric's FR cotton apparel can withstand up to 50 washes which exceeds the ASTM D6413 minimum requirement of 25 washes.



FR Cotton Care Instructions

1. Wash separately in a Normal or Cotton cycle at any water temperature up to a maximum of 120°F (50°C) using a typical home laundry detergent.
2. To reduce streaking from abrasion, turn garments inside out before wash.
3. Fill the washer no more than 2/3 full and use high water level.
4. Conditioned or soft water can help improve removal of contaminants from garments.
5. Soils and other contaminants need to be completely removed from garments during the wash process.
7. Hang dry or tumble dry.
8. FR properties withstand up to 50 washes.

Non-FR Cotton Care Instructions

1. Wash separately in a Normal or Cotton cycle using a typical home laundry detergent.
2. To reduce streaking from abrasion, turn garments inside out before wash.
3. Fill the washer no more than 2/3 full and use high water level.
4. Conditioned or soft water can help improve removal of contaminants from garments.
5. Soils and other contaminants need to be completely removed from garments prior to the wash process.
7. Hang dry or tumble dry.

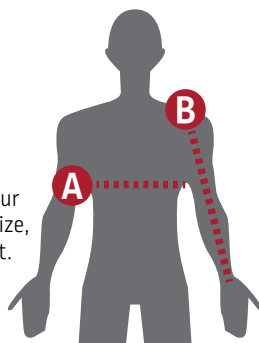
Care Instructions Tag Location

For the care instructions specific to each item, please check the inside collar for all FR cotton jackets, or the inner seam of all FR or Non-FR caps, beanies, doo rags and bandanas.

Symbol	Meaning	Symbol	Meaning
	Machine wash normal cycle		Tumble dry
	Do not bleach		Do not iron

Welding Jackets Size Chart

To determine chest size, measure the width of your torso at its broadest point. To determine sleeve size, extend your arm and measure from collar to wrist. Refer to below table to determine your size.



All sizes (cm)

	Size	M	L	XL	2XL	3XL
A	Chest	96-107	107-117	117-127	127-137	137-147
B	Sleeve	79	81	84	86	89



Welding Jackets Icon Legend



Flame Retardant (FR) – Cotton fabric that is ASTM D6413 compliant which prevents and extinguishes fire while allowing airflow for superior comfort.



Lightweight – Ergonomic design with increased airflow to reduce moisture will provide for all day comfort whilst working in all welding environments.



Anti-Static and Anti-Microbial – Fabric also has an anti-static and mildew resistant coating for added longevity and protection.



Machine Washable – Jacket can be washed up to 50 times and still maintains its flame retardant properties allowing for a longer service life.



Heavy Duty – This jacket has leather features that protect the body, sleeves and neck. It also may have reinforced shoulders or button columns.



Safety – This jacket has reflective stripes that enhance visibility and safety for the operator.



Harness – This jacket has a slot in the back for fall harness integration.

Due to constant improvements Lincoln Electric reserve the right to amend any of the above without notification. Products may vary in appearance from product photography shown in this publication and may also include optional extras that are an additional cost. Subject to Change – This information is accurate to the best of our knowledge at the time of printing.

MENS JACKETS



Premium FR cotton self-extinguishes when exposed to flames or sparks

Inside pockets for personal storage

Flip-up velcro collar offers extra protection



Traditional Flame Retardant Cloth Jacket

100% flame retardant material offers protection for light duty welding. An inside pocket stows personal items. Machine washable.

Part Number/ Size	Chest Measurement (cm)	Jacket Sleeve (cm)	Jacket Torso (cm)
K2985-M	102-107	79	76
K2985-L	112-117	81	76
K2985-XL	122-127	84	76



Premium FR cotton self-extinguishes when exposed to flames or sparks

Inside pockets for personal storage

Durable leather sleeve for extra protection



Traditional Split Leather Sleeved Jacket

Split cowhide sleeves resist spatter and add durability, while 255 grams of 100% flame retardant material on the chest and back keep you cool. This basic jacket features an inside pocket and adjustable snap sleeves.

Part Number/ Size	Chest Measurement (cm)	Jacket Sleeve (cm)	Jacket Torso (cm)
K3106-M	102-107	79	76
K3106-L	112-117	81	76
K3106-XL	122-127	84	76
K3106-2XL	132-137	86	76

Premium FR cotton self-extinguishes when exposed to flames or sparks

Industrial strength leather sleeves for spatter, spark and heat protection

Spatter guard button liner



Flip-up velcro collar offers extra protection

Cotton inside upper arm improves comfort

Adjustable side straps to improve fit and appearance



Shadow™ Split Leather Sleeved Jacket

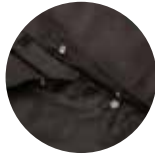
Durable split cowhide sleeves, combined with cool flame retardant material on the chest, offer extra protection for MIG or stick welding. A flip up collar is secured by hook and loop and a lined flap on the back snaps closed for extra protection. Two horizontal hip pockets with hook and loop secured flaps stow your personal items.

Part Number/ Size	Chest Measurement (cm)	Jacket Sleeve (cm)	Jacket Torso (cm)
K2986-M	102-107	79	76
K2986-L	112-117	81	79
K2986-XL	122-127	84	81
K2986-XXXL	142-147	89	86

Due to constant improvements Lincoln Electric reserve the right to amend any of the above without notification. Products may vary in appearance from product photography shown in this publication and may also include optional extras that are an additional cost. Subject to Change – This information is accurate to the best of our knowledge at the time of printing.

MENS JACKETS

Industrial strength leather for spatter, spark and heat protection



Spatter guard button liner



Flip-up velcro collar offers extra protection

Flame retardant cloth back to keep you cool

Inside pockets for personal storage



Heavy Duty Leather Welding Jacket

Heavy duty split cowhide leather chest and sleeves provide superior protection for heavy duty applications and gouging, while the flame retardant cloth back keeps you cool. The flip up collar is secured by hook and loop while the front jacket closure features a lined flap secured by snaps. An inside pocket protects personal items.

Part Number/ Size	Chest Measurement (cm)	Jacket Sleeve (cm)	Jacket Torso (cm)
K2989-M	102-107	79	76
K2989-L	112-117	81	79
K2989-XL	122-127	84	81
K2989-XXL	132-137	86	81

Premium FR cotton self-extinguishes when exposed to flames or sparks

Inside pockets for personal storage



Flip-up velcro collar offers extra protection

Lightweight material improves comfort and mobility

Adjustable sleeve cuffs for comfort



Red Line™ Welding Jacket FR Bright Safety Orange

The bright colour fabric improves the visibility of the operator which has numerous safety benefits. The fabric is coated with a machine washable flame retardant layer which prevents and extinguishes fire. Lightweight, breathable FR material keep you cool and allows excellent arm mobility

Part Number/ Size	Chest Measurement (cm)	Jacket Sleeve (cm)	Jacket Torso (cm)
K4688-L	112-117	81	76
K4688-XL	122-127	84	76
K4688-2XL	132-137	86	76

Premium FR cotton self-extinguishes when exposed to flames or sparks

Inside pockets for personal storage



Durable leather sleeve for extra protection

Adjustable sleeve cuffs for comfort



Red Line™ Welding Jacket FR Bright Safety Orange with Leather Sleeves

Bright orange fabric improves visibility offering numerous safety benefits. Adjustable chrome plate snap cuffs offer wrist and forearm protection. Two-piece (gusseted) armpit sleeve design improves arm mobility.

Part Number/ Size	Chest Measurement (cm)	Jacket Sleeve (cm)	Jacket Torso (cm)
K4690-L	112-117	81	76
K4690-XL	122-127	84	76
K4690-2XL	132-137	86	76

Due to constant improvements Lincoln Electric reserve the right to amend any of the above without notification. Products may vary in appearance from product photography shown in this publication and may also include optional extras that are an additional cost. Subject to Change – This information is accurate to the best of our knowledge at the time of printing.

MENS JACKETS



Back slot for fall harness integration



Large inside pockets for personal storage

Kevlar sewn silver reflective tape is flame retardant and meets ISO 15025 standards

Lightweight material improves comfort and mobility

Adjustable sleeve cuffs for comfort



Red Line™ Welding Jacket FR Bright Safety Orange with Reflective Stripes

High Visibility FR Orange welding jacket provides prominent operator visibility, ideal for job sites with moving vehicles or machinery. Machine washable flame retardant layer which prevents and extinguishes fire.

Part Number/ Size	Chest Measurement (cm)	Jacket Sleeve (cm)	Jacket Torso (cm)
K4692-L	112-117	81	76
K4692-XL	122-127	84	76
K4692-2XL	132-137	86	76

WOMENS JACKETS



Premium FR cotton self-extinguishes when exposed to flames or sparks

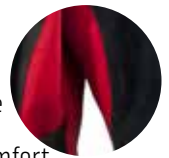
Industrial strength leather sleeves for spatter, spark and heat protection

Spatter guard button liner

Flip-up velcro collar offers extra protection

Cotton inside upper arm improves comfort

Adjustable side straps to improve fit and appearance



Women's Shadow™ Flame Retardant Welding Jacket

Designed specifically to fit women welders. Adjustable snap sleeves and snap cinch waist keep spatter out and the fit just right. Horizontal flap pockets secure personal items. Combines durable split cowhide sleeves, cooling front and FR cloth back panels to offer the right protection.

Part Number/ Size	Bust Measurement (cm)	Waist Measurement (cm)	Jacket Sleeve (cm)	Jacket Torso (cm)
K3114-S	91-99	81-86	71	68
K3114-M	99-104	86-91	74	68
K3114-L	104-109	91-96	76	68

Due to constant improvements Lincoln Electric reserve the right to amend any of the above without notification. Products may vary in appearance from product photography shown in this publication and may also include optional extras that are an additional cost. Subject to Change – This information is accurate to the best of our knowledge at the time of printing.



GLOVES OVERVIEW

PREMIUM QUALITY GLOVES

Our gloves are made with premium leather that have passed specific tests, for thermal and electrical risks. They protect from welding operations such as: MMA, MAG, MIG, Stick, TIG plasma cutting and gouging.

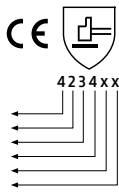
Mechanical hazards

EN 388: 2016

Heat resistance

EN 407: 2004

TEST
 Abrasion [0-4]
 Resistance to cutting [0-5]
 Resistance to tearing [0-4]
 Resistance to perforation [0-4]
 TDM resistance to cutting [E]; [A-F]
 Attenuation of impact [P]; [Pass/Fail]



TEST
 Reaction to flame [0-4]
 Contact heat [0-4]
 Convective heat [0-4]
 Radiating heat [0-4]
 Splattering with small quantities of molten metal [0-4]
 Splattering with large quantities of molten metal [0-4]



An index of x indicates that the glove has not been tested for this type of risk.

Heat resistance



Dexterity



Abrasion resistance



Molten metal splashes



Due to constant improvements Lincoln Electric reserve the right to amend any of the above without notification. Products may vary in appearance from product photography shown in this publication and may also include optional extras that are an additional cost. Subject to Change – This information is accurate to the best of our knowledge at the time of printing.

GLOVES – STICK



Heat resistance



Dexterity



Abrasion resistance



Molten metal splashes



EN388



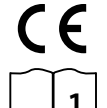
4243

EN407



413X4X

EN12477



1

Premium Leather MIG / Stick Welding Gloves

Durable side split cowhide deliver superior comfort and performance. Lined interior and padded palm maximises comfort. The palm reinforcement extends life in high wear areas. Kevlar® thread provides heat resistance and added seam strength. One size fits all.

Product name	Product number
Gloves Blue Premium Leather 390mm	LA120-2
Gloves Blue Lefties 390mm	LA120-3



Heat resistance



Dexterity



Abrasion resistance



Molten metal splashes



Superior Leather MIG / Stick Welding Gloves

Durable side split cowhide deliver superior comfort and performance. Lined interior and padded palm maximises comfort extends life. Kevlar® thread provides heat resistance and added seam strength. Forearm coverage is extended for extra protection. One size fits all.

Product name	Product number
Gloves Grey 390mm	LA120-5



Heat resistance



Dexterity



Abrasion resistance



Molten metal splashes



Traditional MIG / Stick Welding Gloves

General purpose gloves are heat and flame resistant split cowhide. Feature a 100% soft sweat absorbent internal cotton lining for added comfort and heat resistance. Kevlar® stitching and welt seams offer added durability. Thumb pads in high wear areas extend the work life of the glove. One size fits all.

Product name	Product number
Gloves Black Flame	K2979-ALL

Due to constant improvements Lincoln Electric reserve the right to amend any of the above without notification. Products may vary in appearance from product photography shown in this publication and may also include optional extras that are an additional cost. Subject to Change – This information is accurate to the best of our knowledge at the time of printing.

GLOVES – TIG

Extended forearm for extra protection

Straight thumb design

Kevlar thread for resistance and strength



Heat resistance



Dexterity



Abrasion resistance



Molten metal splashes



Leather TIG Welding Gloves

Our supple goat skin leather provides the right fit, sensitive feel and durable construction that precise TIG welding demands. The straight thumb design features welt seams and tough Kevlar® stitching to extend service life. One size fits all.

Product name	Product number
Gloves TIG Goatskin 125mm Cuff	K2981-XL

Shorter cuff for better movement

Reinforced calfskin leather for fine movement



Heat resistance



Dexterity



Abrasion resistance



Molten metal splashes



Reinforced TIG Gloves

Reinforced calfskin leather gloves offer the fine movement required for TIG welding while offering quality protection with 165mm long cuff

Product name	Product number
Gloves TIG reinforced 165mm Cuff	LA180

GLOVES – WOMENS

Extended forearm for extra protection

Sweat absorbent internal lining for comfort

Kevlar thread for resistance and strength



Heat resistance



Dexterity



Abrasion resistance



Molten metal splashes



Jessi Combs Women's MIG/Stick Welding Gloves

These general purpose gloves are constructed with heat and flame resistant split cowhide for all types of welding. Inside, the gloves feature a 100% soft sweat absorbent cotton lining for added comfort and heat resistance. Kevlar® stitching and welt seams offer added durability and thumb pads in high wear areas extend the work life of the glove.

Product number	Size Measurement
K3232-S	190mm
K3232-M	200mm

Hand Sizing for Gloves



Due to constant improvements Lincoln Electric reserve the right to amend any of the above without notification. Products may vary in appearance from product photography shown in this publication and may also include optional extras that are an additional cost. Subject to Change – This information is accurate to the best of our knowledge at the time of printing.

GLOVES – SPECIALISED

Extended forearm
for extra protection

Multi-layered
aluminised design

Kevlar thread for
resistance and strength



Heat resistance



Dexterity



Abrasion resistance



Molten metal splashes



Heat Resistant Welding Gloves

Multi-layered aluminised PFR Rayon® design. High heat-resistant gloves reflect 95% of radiant heat to help keep the operator cool. Tough top grain cowhide construction is lined for added comfort. Sewn with Kevlar® thread for maximum strength. One size fits all.

Product name	Product number
Gloves Aluminised heat reflective	K2982-XL

Extended forearm
with fasteners for
extra protection

Silicone knuckle
covers for protection

Kevlar thread for
resistance and strength



Heat resistance



Dexterity



Abrasion resistance



Molten metal splashes



Roll Cage® Welding Rigging Gloves

Silicone knuckle covers protect your fingers from impact and injury. Overlaying lining layer reinforces high wear areas of the palm. Inside Lining provides protection against cuts. Kevlar® stitching provides maximum strength. Heat-Resistant wrist guard and fastener secures the glove while allowing for quick removal.

Product number	Size Measurement
K3109-XL	245mm
K3109-2XL	255mm



GLOVES – GENERAL

Drivers Side Split Cowhide Gloves

Made from side split cowhide.



Heat resistance



Dexterity



Abrasion resistance



Molten metal splashes



Product name	Product number
Gloves Drivers Side Split Cowhide	WP10-2064

Due to constant improvements Lincoln Electric reserve the right to amend any of the above without notification. Products may vary in appearance from product photography shown in this publication and may also include optional extras that are an additional cost. Subject to Change – This information is accurate to the best of our knowledge at the time of printing.

BODY PROTECTION

Leather covers for maximum protection



Velcro straps make fitting easy

Leather Spats

Product name	Product number
Spats Leather	WP44-2106

Sleeve length 53cm (530mm)

Durable 255 gram material leather for high-wear area



Elastic cuffs both sides for easy fitting and maximum protection

Split Leather Flame Retardant Welding Sleeves

Product name	Product number
Redline Leather sleeves	K3111-ALL



Adjustable harness

Split heavy cowhide

One size fits all

Added protection



Split Leather Welding Apron

Product name	Product number
Redline Leather Apron	K3110-ALL

Due to constant improvements Lincoln Electric reserve the right to amend any of the above without notification. Products may vary in appearance from product photography shown in this publication and may also include optional extras that are an additional cost. Subject to Change – This information is accurate to the best of our knowledge at the time of printing.

HEAD PROTECTION



Flame Retardant Bandana

Premium bandana made of 255g of flame retardant material, featuring athletic mesh lining for fast sweat evaporation. Bandana's are machine washable. Available in two designs – one size fits all.

Product name	Product number
Lincoln Bandana	K2993-All
Camo Bandana	K4825-All



Flame Retardant Welding Hood

Made from flame retardant treated cotton. Offers full protection to head and neck particularly when welding out of position. Will retain its flame retardancy for up to 50 normal washes.

Product name	Product number
Welding Hood Flame Retardant	WP23-6690



Helmet Bib with Press Fit Seal

Innovative press fit silicone seal easily attaches to the welding helmet edge for full frontal neck coverage. Can be removed quickly without damaging your helmet. Sewn with high strength kevlar thread to withstand long term use. Weighs only 0.109kg.

Product name	Product number
Helmet Bib – Split Leather	KP3729-1
Helmet Bib – Grain Leather	KP3730-1

Extended Head Cover with Press Fit Seal

FR Cotton headcover with innovative press fit silicone seal provides additional head and neck protection. The headcover easily connects to all Lincoln welding helmets and most competitive models to cover the operators head and back neck regions from arc rays, spatter and sparks. Sewn with high strength Kevlar thread to withstand long term use..

Product name	Product number
Extended Head Cover	KP4789-1



Flame Retardant Welding Beanie

Protect your head with this authorized Lincoln Electric flame retardant beanie. Machine washable. One size fits all.

Product name	Product number
Welders Beanie Flame Retardant	K2994-XL



Gas Welding Goggles

Protect your eye sight even when gas welding. These goggles come with flip up shade 5. Theses lenses can be flipped out the way to reveal clear lenses for clear vision while still protecting your eyes.

Product name	Product number
Goggles flip front shade 5	94006909

Due to constant improvements Lincoln Electric reserve the right to amend any of the above without notification. Products may vary in appearance from product photography shown in this publication and may also include optional extras that are an additional cost. Subject to Change – This information is accurate to the best of our knowledge at the time of printing.

PROTECT OTHERS



Welding Blanket

Temperature rated at 126°C with melting at 1649°C. Ideal for protection against severe molten metal splash and extremely high temperatures. 1.75m x 1.75m.

Product name	Product number
Welding Blanket Silica Fabric 1.8m x 1.8m	WP50-1866
Welding Blanket Gold Fibreglass 1.8m x 1.8m	WP50-3066

Welding Frame

1.8m x 1.8m. Modular frames offer versatility, easy set-up and portability. Shown with welding curtain (part 03-0418) sold separately.

Product name	Product number
Welding Frame 1.8m x 1.8m	WP55-8166

Welding curtain (red)

1.8m x 1.8m. Specially formulated vinyl 16mil (0.4mm thick). Transparent and resistant to UV rays, flame and abrasion.

Product name	Product number
Welding Curtain Red 1.8m x 1.8m	03-0418

ACCESSORIES



Duffel Bag

With generous dimensions this duffel bag holds your welding gear and/or after-work street clothes (610mm x 305mm x 305mm) industrial grade – tough 1680 Denier® fabric resists wear and abrasion. Three exterior pockets store common welding accessories. Includes padded shoulder strap and 100mm carabiner to secure your VIKING™ auto-darkening helmet, leaving more room inside the bag for other items.

Product name	Product number
Lincoln Duffel Bag	K3096-1

Welders All-in-One Backpack

Versatile Storage Solution for Fabricators

The Welders All-In-One Backpack is a versatile storage solution for industrial environments. The unique design allows for easy-to-access storage of personal protective equipment, tools and consumables with separate capacity for a laptop and textbooks.

- Versatility – Unique external helmet net provides more space for equipment inside and can be removed if desired
- Front load primary storage compartment with numerous pockets makes it easier to store and find your gear
- Durability – Military grade 1680 Denier® nylon exterior for improved abrasion protection
- Polyester interior with protective coating to prevent rips and tears
- Comfort – Cushioned back panel design distributes pressure and improves airflow

• Soft, padded shoulder straps rated for carrying 22.6 Kg.
Dimensions: 190mm Width x 368mm Length x 508mm Height
Storage: 12 Total Pockets

Product name	Product number
All-in-one duffel bag	K3740-1

CUSTOMER ASSISTANCE POLICY

Lincoln Electric® business is manufacturing and selling high quality welding equipment, consumables, and cutting equipment. Our challenge is to meet the needs of our customers and to exceed their expectations. On occasion, purchasers may ask Lincoln Electric® for advice or information about their use of our products. We respond to our customers based on the best information in our possession at that time. Lincoln Electric® is not in a position to warrant or guarantee such advice and to the extent permitted by law assumes no liability, with respect to such information or advice. As a matter of practical consideration, we also cannot assume any responsibility for updating or correcting any such information or advice once it has been given. The provision of information or advice does not create, expand or alter this warranty. Lincoln Electric® is a responsive manufacturer, but the selection and use of specific products sold by Lincoln Electric® is solely within the control of, and remains the sole responsibility of the customer. Many variables beyond the control of Lincoln Electric® affect the results obtained in applying this type of fabrication methods and service requirements. Subject to Change – This information is accurate to the best of our knowledge at the time of printing.

The Lincoln Electric Company (Australia) Pty. Ltd.
35 Bryant Street Padstow NSW 2211 Australia
Ph: 1300 728 720 [AU] | 0800 728 720 [NZ]
www.lincolnelectric.com.au

