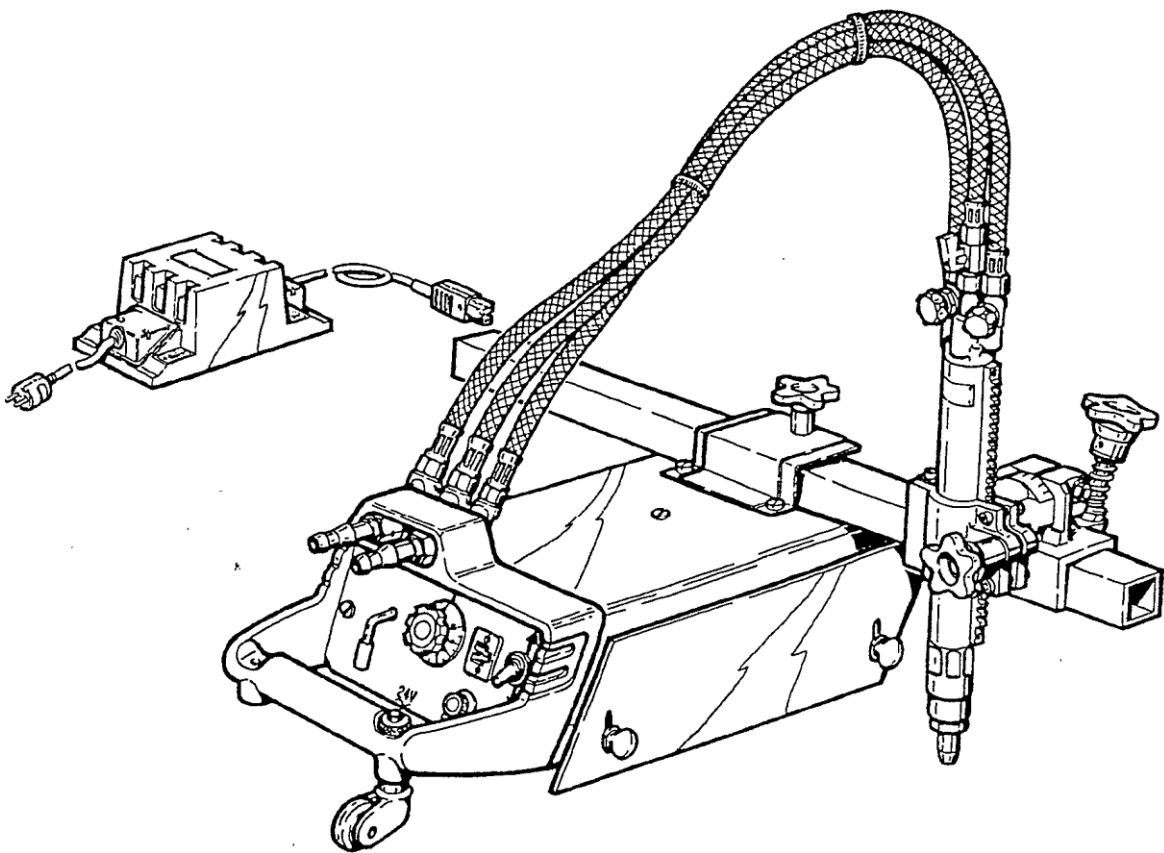


THIS MOTORIZED GENERAL-PURPOSE CARRIAGE

PYROTOME SE

SAFETY INSTRUCTIONS FOR USE AND MAINTENANCE

MACHINE N° W000138864



EDITION: EN
REVISION: J
DATE: 05-2019

Instructions for use

REF: 8695 4001

Original instructions

LINCOLN[®]
ELECTRIC

Thank for the trust you have expressed by purchasing this equipment, which will give you full satisfaction if you follow its instructions for use and maintenance.

Its design, component specifications and workmanship comply with applicable European directives.

Please refer to the enclosed CE declaration to identify the directives applicable to it.

The manufacturer will not be held responsible where items not recommended by themselves are associated with this product.

For your safety,there follows a non-restrictive list of recommendations or requirements, many of which appear in the employment code.

Finally we would ask you kindly to inform your supplier of any error which you may find in this instruction manual.

CONTENTS

A - IDENTIFICATION	1
B - SAFETY INSTRUCTIONS.....	2
1 - AIRBORNE NOISE	2
2 - PARTICULAR SAFETY INSTRUCTIONS	2
C - DESCRIPTION	4
D - ASSEMBLY	6
1 - INSTALLATION ASSEMBLY	6
2 - OPTION ASSEMBLY	7
E - MAINTENANCE.....	22
F - SPARE PARTS.....	25
1 - CASING/CROSSBAR SUPPORT/TRANSFORMER ASSEMBLY	26
2 - MOTORIZATION SET	30
3 - TORCH HOLDER SUBASSEMBLY.....	34
4 - VALVE/CONNECTOR/CASTOR SUBASSEMBLY	36
5 - TURRET SUBASSEMBLY	38
6 - LATERAL GUIDE EQUIPMENT	40
7 - TORCH SUPPORT ASSEMBLY.....	41
8 - COUNTERBALANCE/RADIUS ARM SUBASSEMBLY	42
9 - FRONT PANEL ASSEMBLY SELF MOVING CARRIAGE	44
10 - REMOTE CONTROL ASSEMBLY.....	46
11 - TORSH FEEDING BEAM	50
PERSONAL NOTES	52

INFORMATIONS

DISPLAYS AND PRESSURE GAUGES

The measuring devices or displays for voltage, current, speed, pressure, etc., whether analog or digital, should be considered as indicators

REVISIONS

REVISION C 01/95

DESIGNATION	PAGE
Add safety pages	3 to 13

REVISION D 02/03

DESIGNATION	PAGE
Let to informatic	all

REVISION E 05/19

DESIGNATION	PAGE
To change logos Reference change	- C9

REVISION F 06/08

DESIGNATION	PAGE
Update	D12

REVISION G 09/08

DESIGNATION	PAGE
Update + spareparts newoffer	

REVISION H 05/09

DESIGNATION	PAGE
Reference change	F34

REVISION I 05/18

DESIGNATION	PAGE
To change logos	

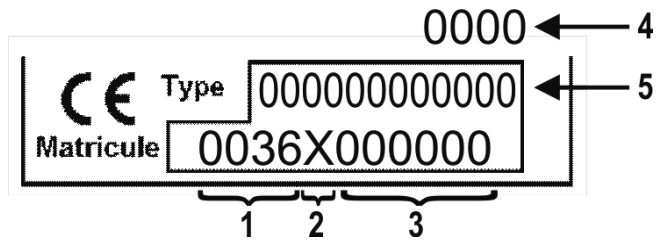
REVISION J 05/19

DESIGNATION	PAGE
Update	B-2 ; D-7 ; F-50

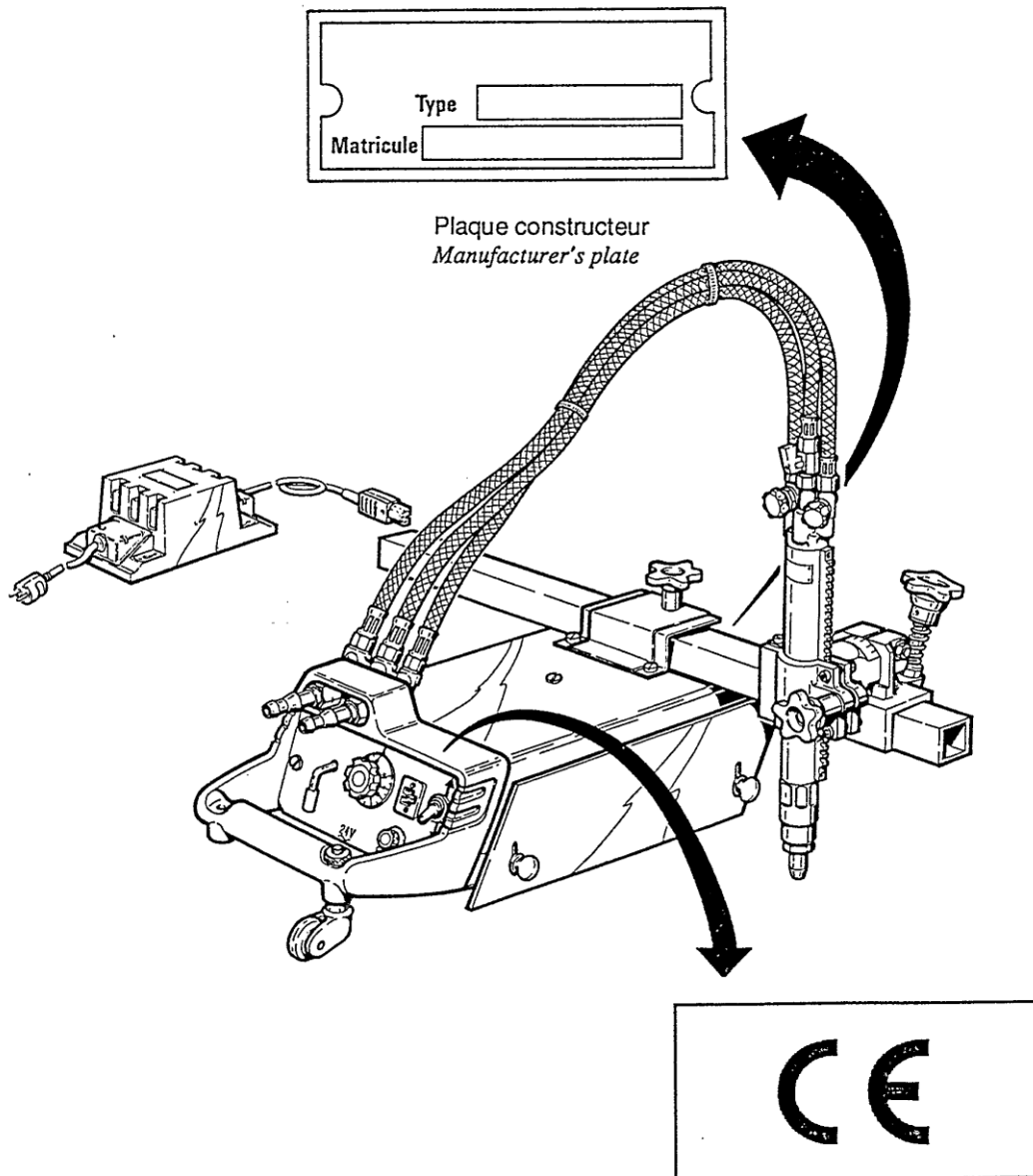
A - IDENTIFICATION

Please enter the number of your equipment in the following box.

Quote this information in all correspondence.

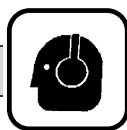


1	Manufacturing factory code	4	Year manufactured
2	Manufacturing year code	5	Product type
3	Product serial no.		



B - SAFETY INSTRUCTIONS

For general safety instructions, please refer to the specific manual supplied with the equipment.



1 - AIRBORNE NOISE

Please refer to the specific manual supplied with the equipment.

2 - PARTICULAR SAFETY INSTRUCTIONS



Users are strongly advised to install the thermal shield to limit the exposure of **PYROTOME SE** and its components to heat and splatter.



Use without a thermal shield could damage **PYROTOME SE** and its components.



Do not expose **PYROTOME SE** to excessively high temperatures.

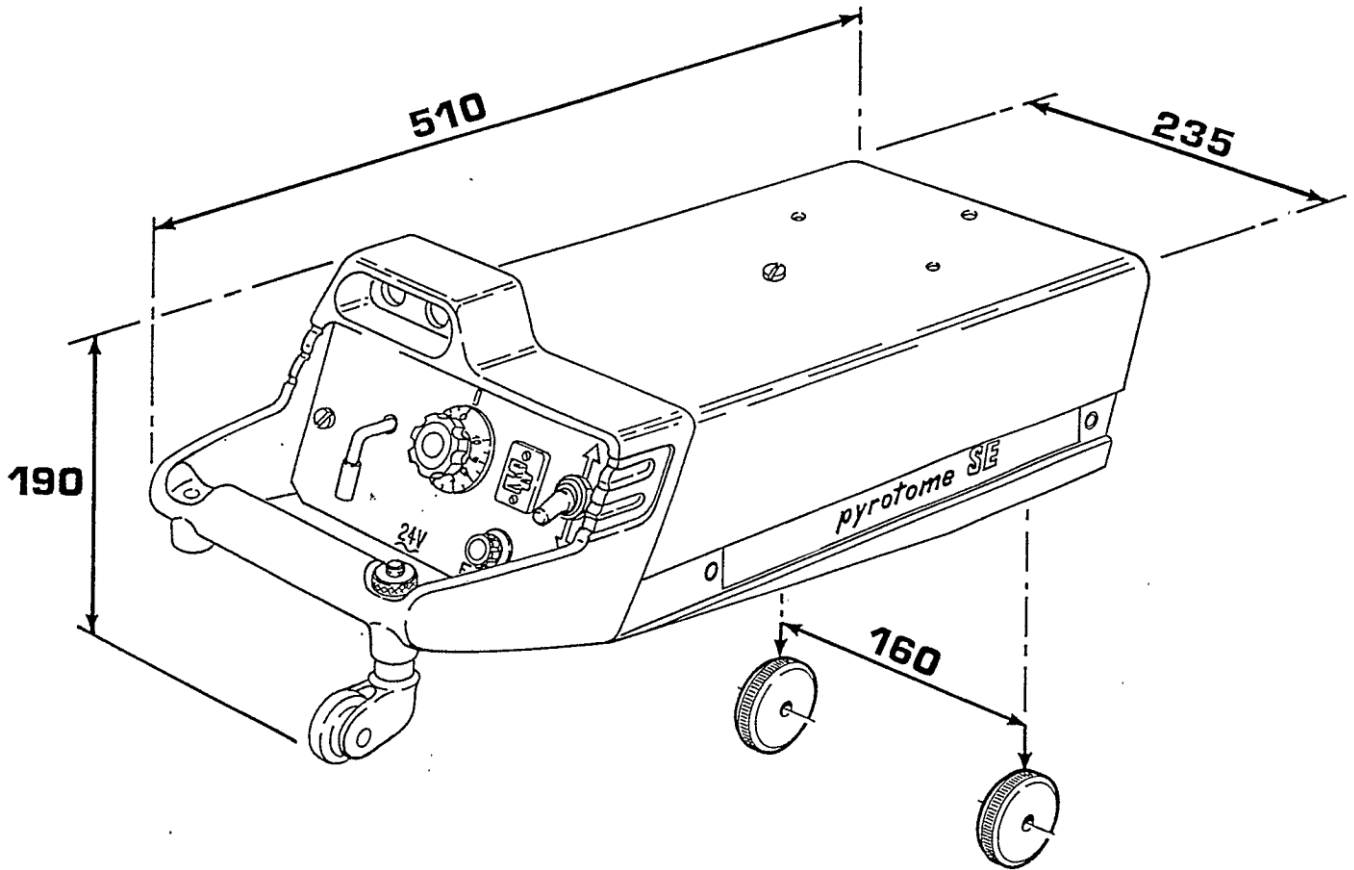


Do not use **PYROTOME SE** on hot parts.



Move the blow pipe away from the carriage to limit exposure to heat from the flame.

C - DESCRIPTION



MAIN CHARACTERISTICS

This motorized general-purpose (oxycutting, plasma cutting, welding) carriage :

PYROTOME SE Bare carriage W000138864

DESCRIPTION WITH TRANSFORMER

The basic version of the assembled **PYROTOME SE** carriage comprises :

- .the motorized carriage itself
- .a torch support assembly
- .a gas manifold
- .a heatshield
- .a transformer

OUTLINE SPECIFICATIONS

Cutting capacity 5 to 250 mm with G1 torch
 > 250 mm with G2 torch

Advance speed 10 to 125 cm/min

Torch inclination adjustable for bevelled cutting at from 0 to 45° righthand or lefthand

A comprehensive range of optional extras (see page 5)

Electrical power supply 230/400 V -50/60 Hz monophase

Input voltage 24 V alternating

Power rating 160 VA

230-400V/24 V transformer

Control panel comprises :

- .forward/reverse switch
- .clutch control
- .speed adjustment potentiometer

7 m cable connecting transformer to carriage

2 m cable connecting transformer to mains supply

PACKAGING

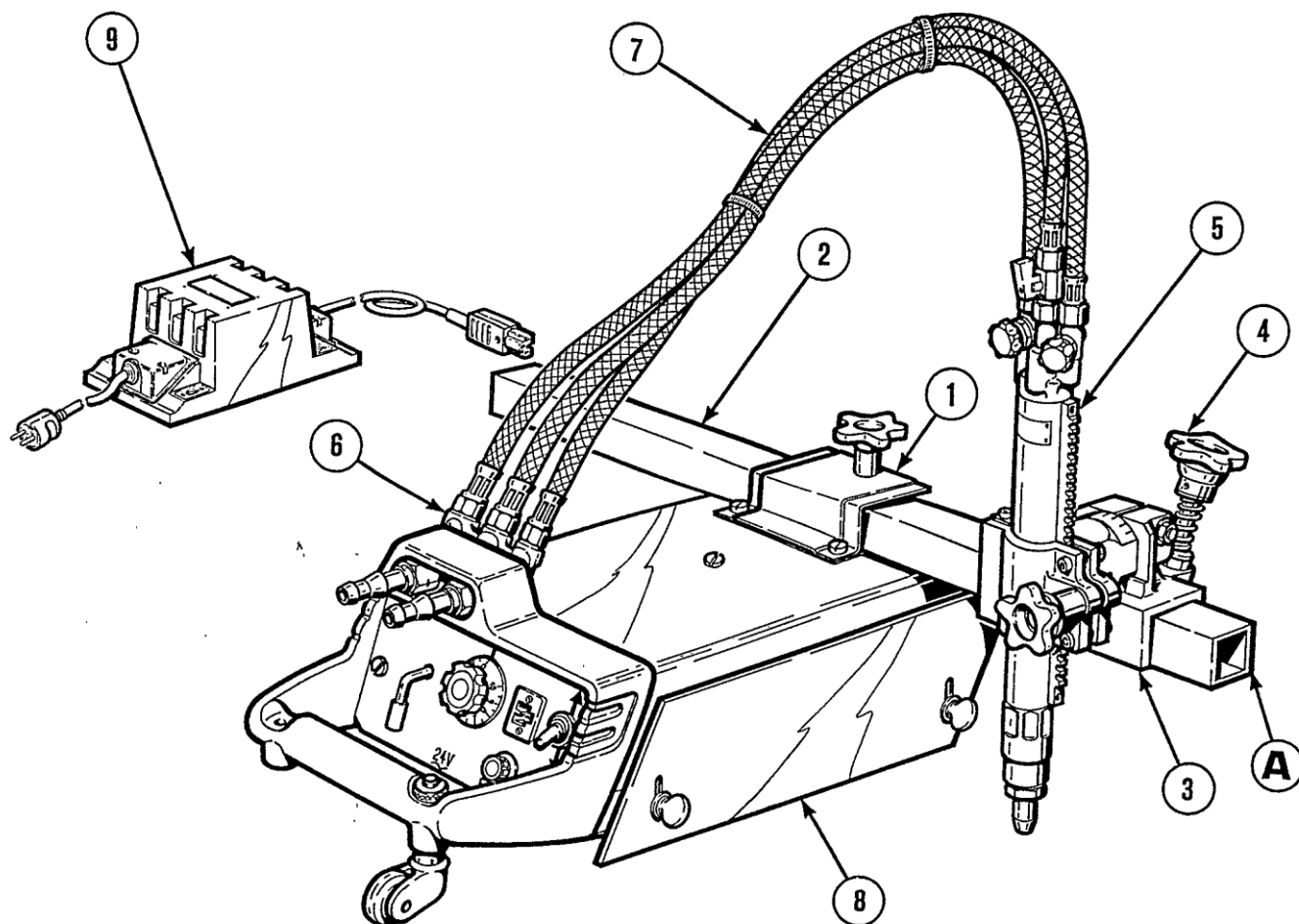
Each **PYROTOME SE** is shipped individually packed in a cardboard carton,

with the following dimensions : length : 820 mm
 width : 300 mm
 height : 300 mm

The net weight of the packaged unit is 28 kg.

D - ASSEMBLY

1 - INSTALLATION ASSEMBLY



.Attach the cross bar support (1).

.Insert the rack crossbar (2) in the crossbar support(1), with the rack downwards on the side opposite control panel (A).

.Mount the support (3) on the rack crossbar (2), screwing down knob (4) lightly.

.Mount the torch (5) in its support (3).

.Mount the gas manifold (6).

.Connect the gas harness(7) to the gas manifold (6) and the torch (5).

.Fit heat shield (8) on the same side as the torch.

.Connect the transformer (9) to the socket on the control panel.

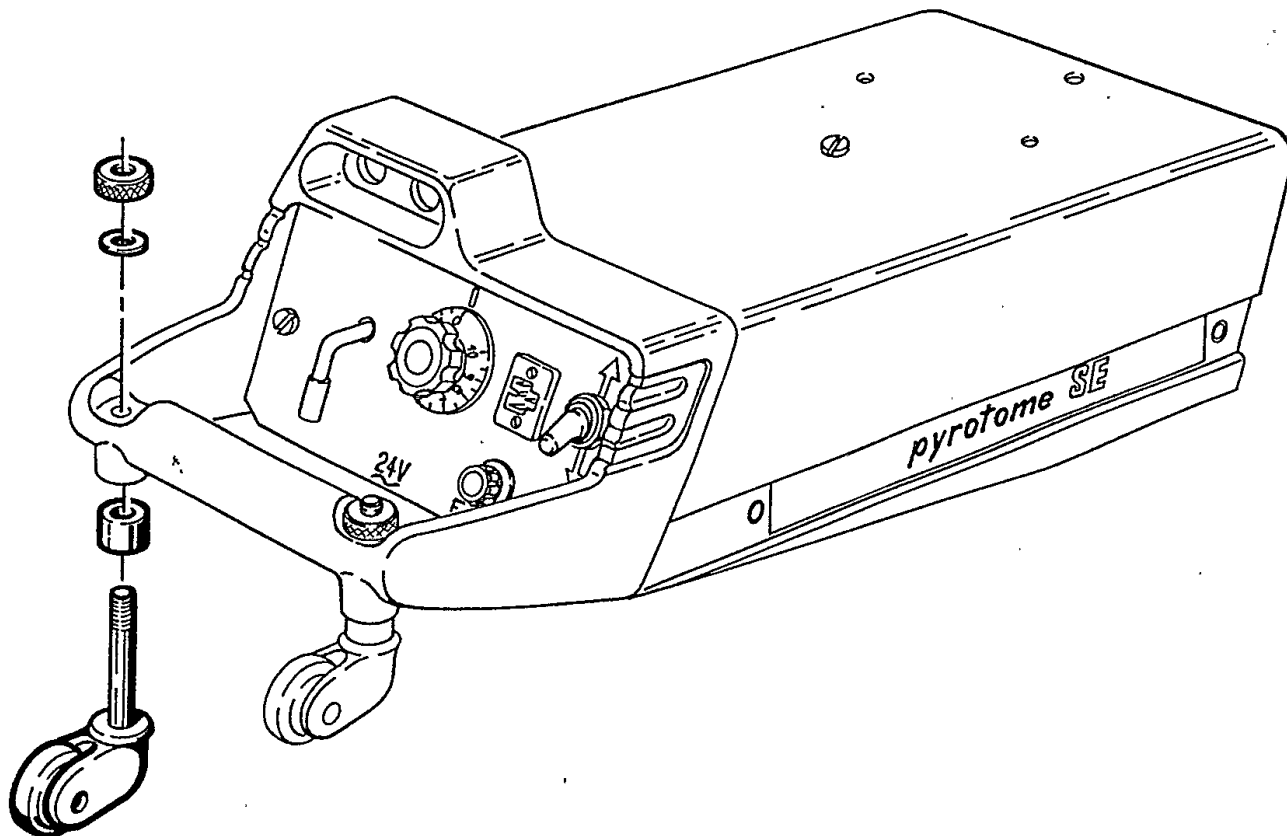
.Fit the torch with a cutting nozzle appropriate to the combustible gas to be used and the thickness of the workpiece to be cut.

2 - OPTION ASSEMBLY

1 OPTIONS AND REFERENCES

Castor assembly	W000325311
Heatshield assembly0696 1111
Rotating turret.....	W000138851
Lateral guide.....	W000138856
Radius arm and counterweight assembly	W000138857
Centralized cutting valve 24 V0696.1470
Second torch assembly.....	.0696.1250
Electrical torch raiser.....	W000325334
Remote control box0696.1450
P30 Torch adaptor0696.1265
Cutting solenoid valve0696.1470
Torch support assembly.....	.0696.1215
CPM 200 Torch adaptor.....	W000138862
Runway 2 m	W000325535
Runway 1,7 m3731.0054

2 CASTOR ASSEMBLY



APPLICATION

With two torches. one on each side of the carriage and in any case with heavy equipments monted on the carriage.

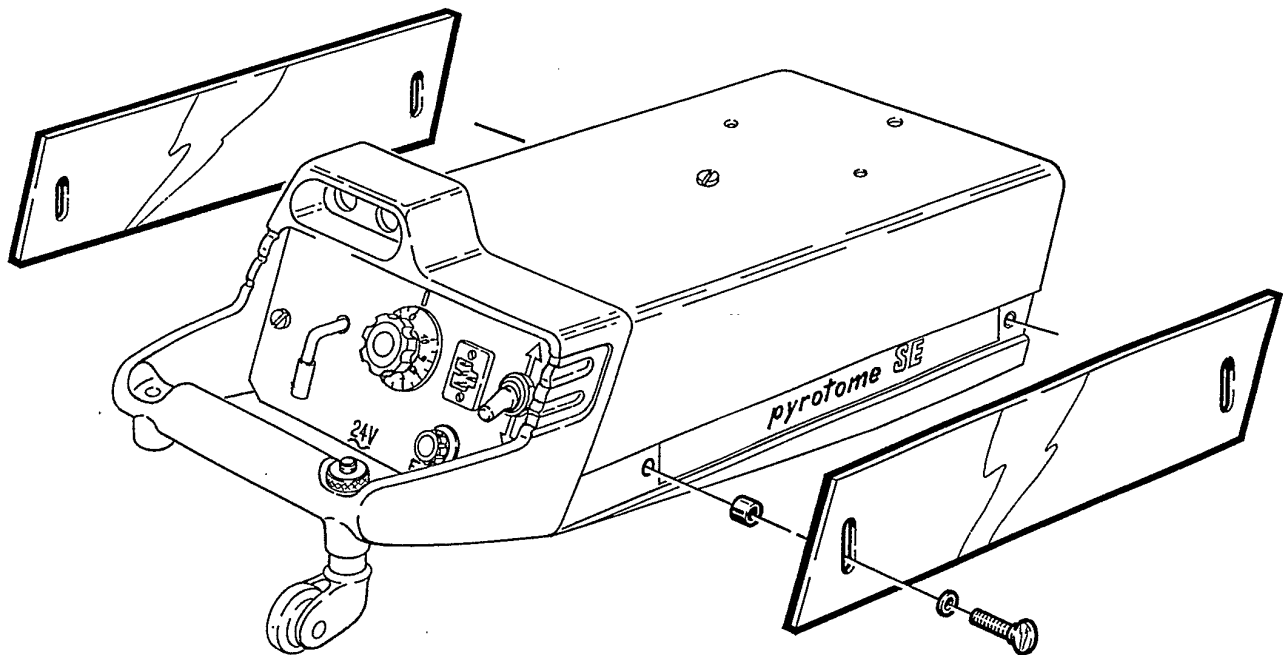
DESCRIPTION

Steerable castor.

ASSEMBLY

See drawing above.

3 HEATSHIELD ASSEMBLY



APPLICATION

Oxycutting with two torches. one on each side of the carriage.

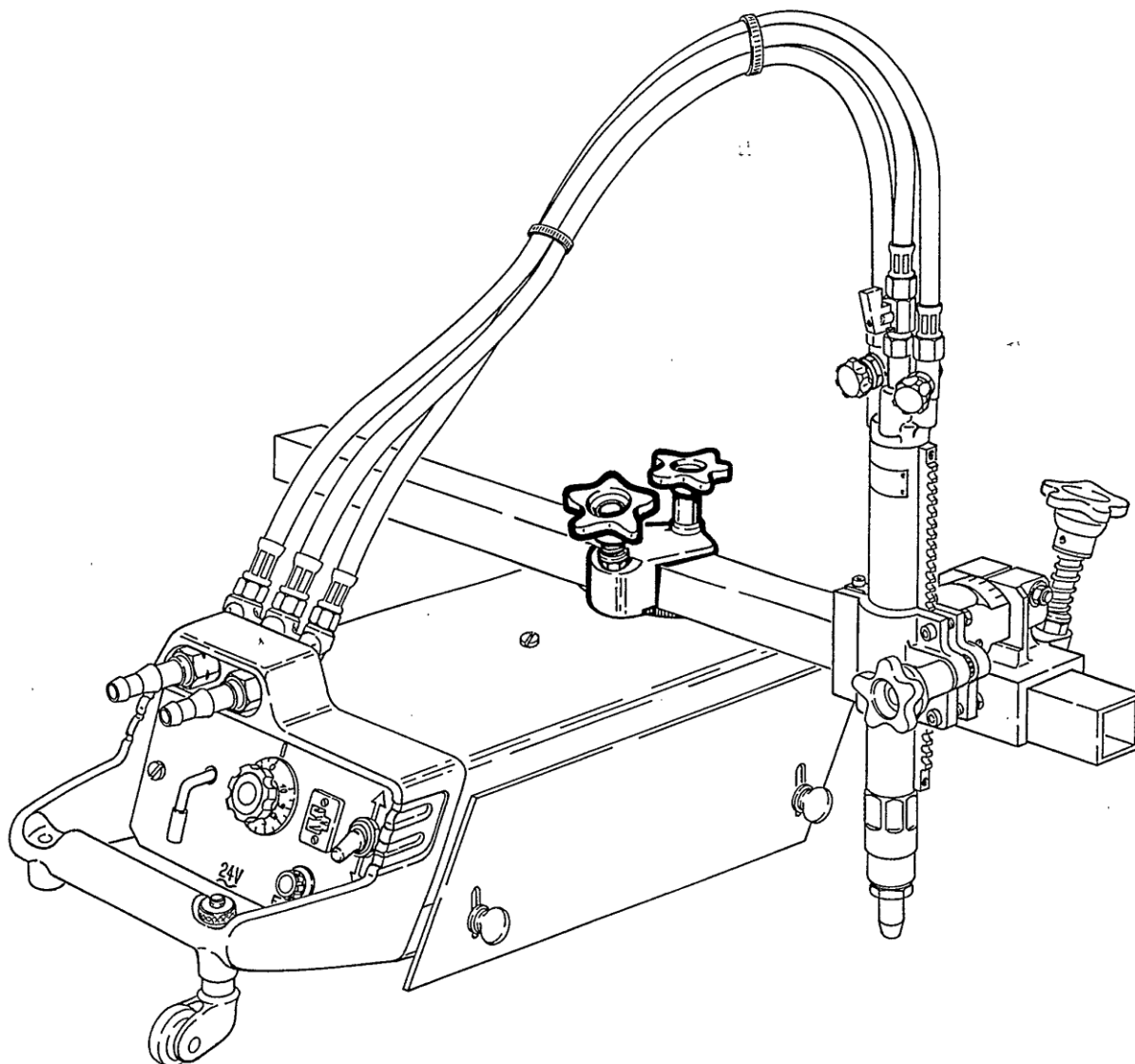
DESCRIPTION

- .Heatshield
- .Two screws
- .Two spacers

ASSEMBLY

Insert the spacers between the carriage and the heatshield. Attach the heatshield by means of the two screws.

4 ROTATING TURRET



APPLICATION

Movement of the rack crossbar :

- .in rotation by slewing of the turret.
- .in translation by action on the rack.

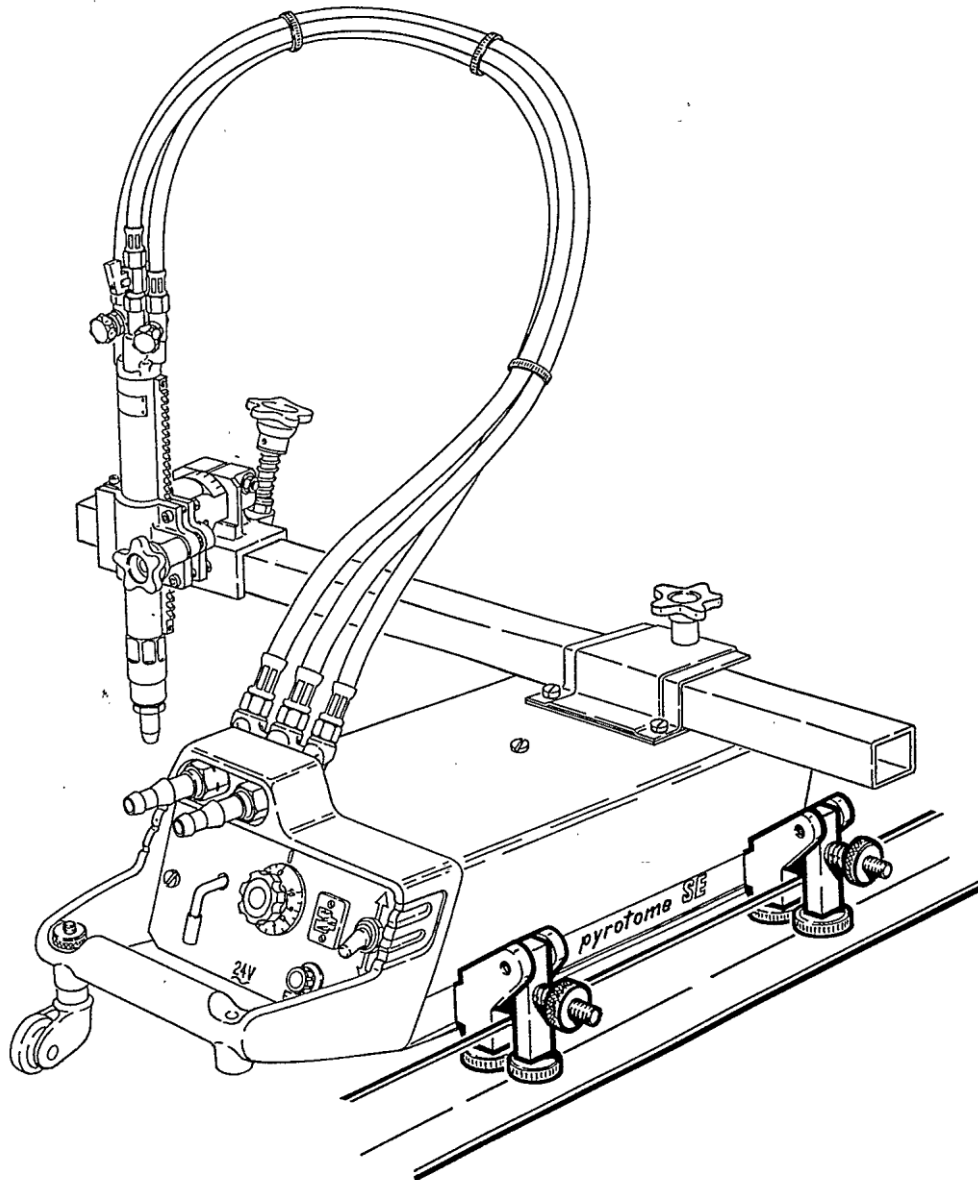
DESCRIPTION

The cast iron turret is mounted on a spindle and equipped with one knob for locking it against rotation and a disengageable knob for movement in translation.

ASSEMBLY

In place of the crossbar support assembly.

5 LATERAL GUIDE



APPLICATION

Guiding the **PYROTOME SE** carriage along a straight line or large radius curve by means of a steel angle attached to the workpiece to be cut.

Height of the vertical sectional side : 30 to 50 mm.

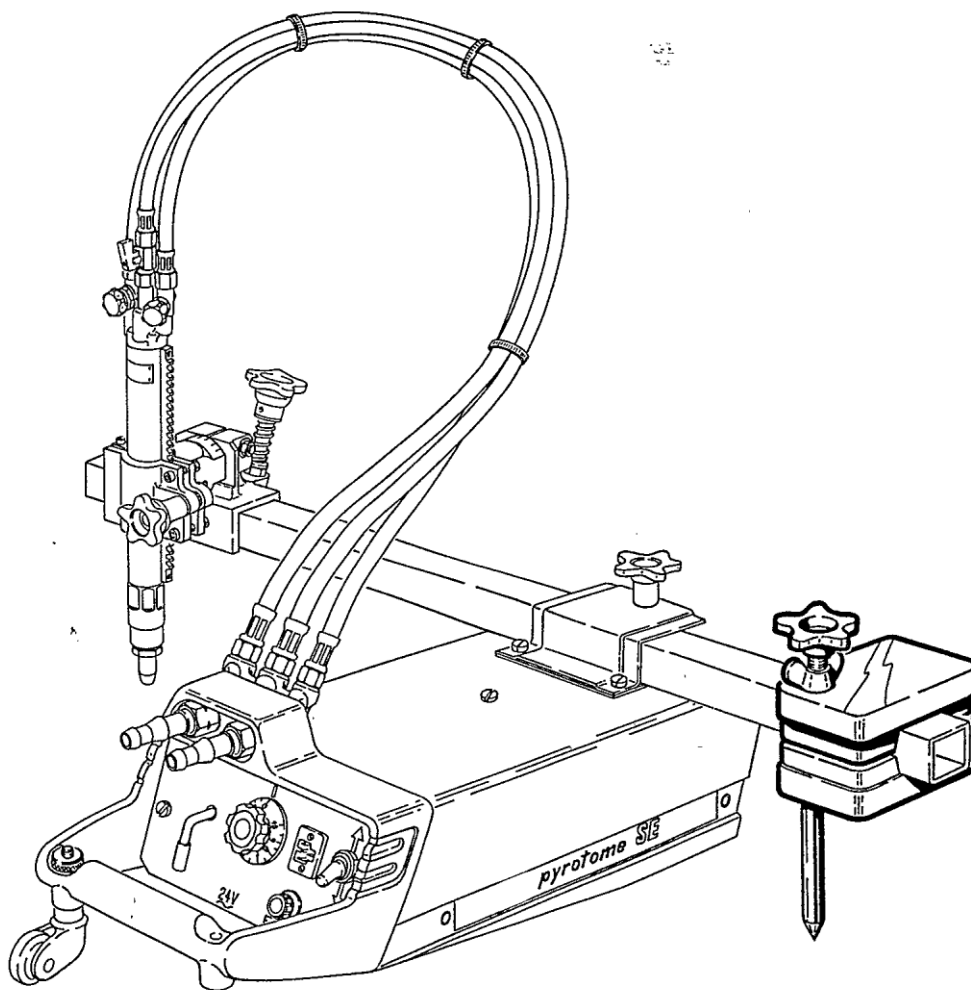
DESCRIPTION

Two guide assemblies each fitted with two rollers.

ASSEMBLY

On the side of the carriage opposite the torch, in the fixing holes symmetrical to the holes used for fixing the heatshield, using a 5 mm Allen key.

6 RADIUS ARM AND COUNTERWEIGHT ASSEMBLY



APPLICATION

- Counterweight : disposed for optimum stability of the carriage.
- Radius arm : operates relative to a centre point clearly marked by means of a punch.
 - .minimum diameter : 130 mm.
 - .maximum diameter : 1 500 mm.

DESCRIPTION

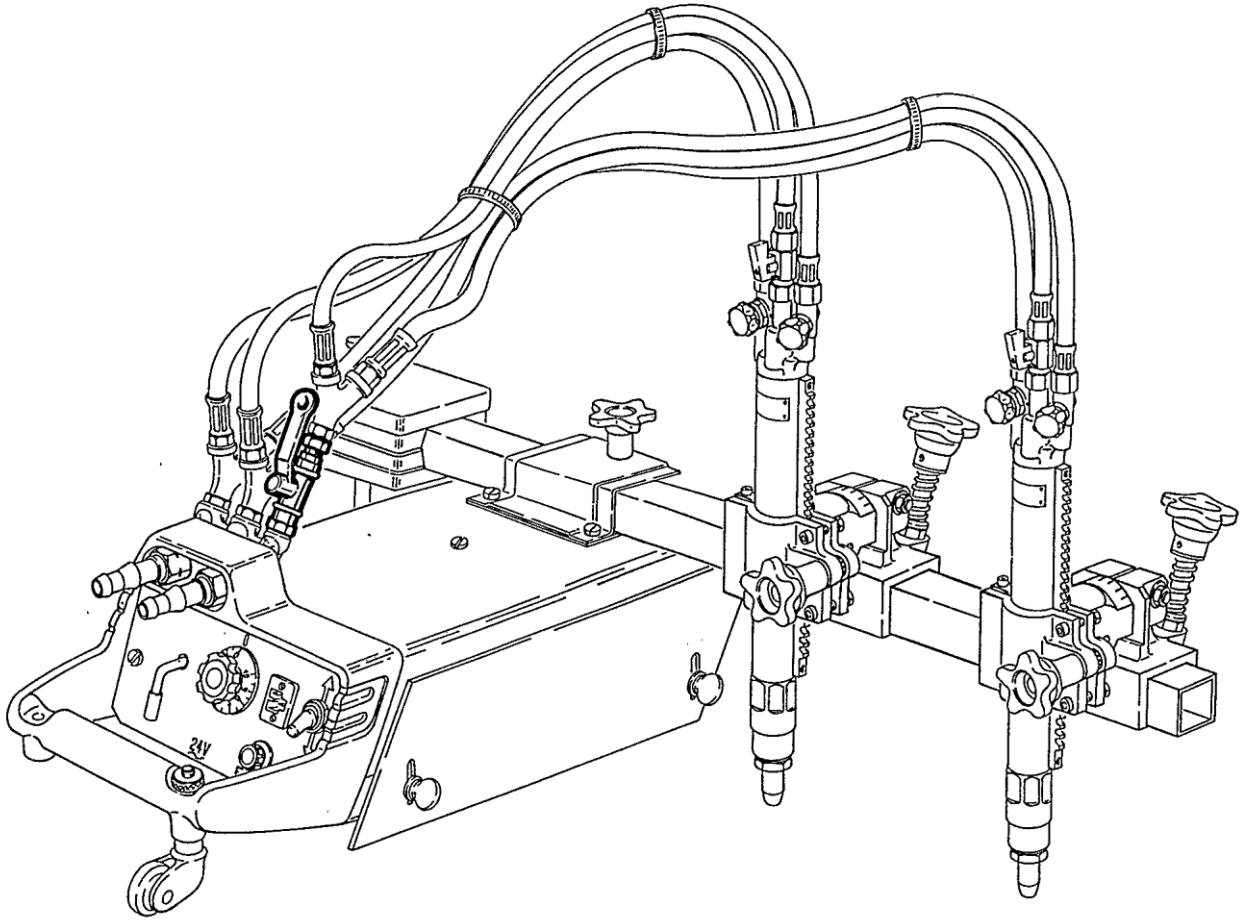
Two sections in cast iron are assembled together by means of two studs, one of which is extended to form a compass point.

ASSEMBLY

Mounts on the rack crossbar.

When using the radius arm, the compass point is disposed on the handle side of the **PYROTOME SE** carriage. The compass point is adjusted vertically so that the inner drive roller is lifted clear of the workpiece.

7 CENTRALIZED CUTTING VALVE



APPLICATION

Centralized control of the cutting oxygen flowrate.

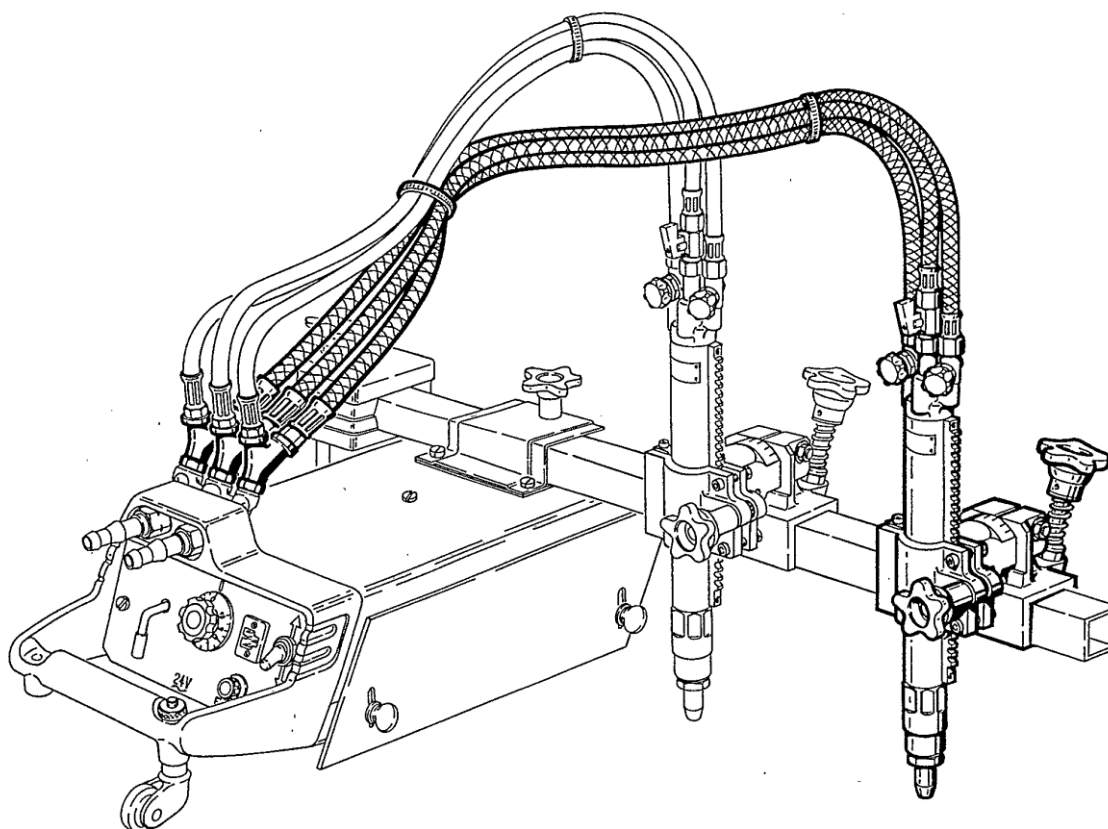
DESCRIPTION

3/8" ball valve.

ASSEMBLY

Mounts on the manifold. in the cutting oxygen feed circuit.

8 SECOND TORCH ASSEMBLY



APPLICATION

Execution of two parallel vertical or bevel cuts :

- Minimum separation : 90 mm.
- Maximum separation : 710 mm.

DESCRIPTION

- 1 GIN torch.
- 1 torch support.
- 1 three-hose harness assembly.
- 3 Y -connectors.

MANDATORY ADDITIONAL EQUIPMENT

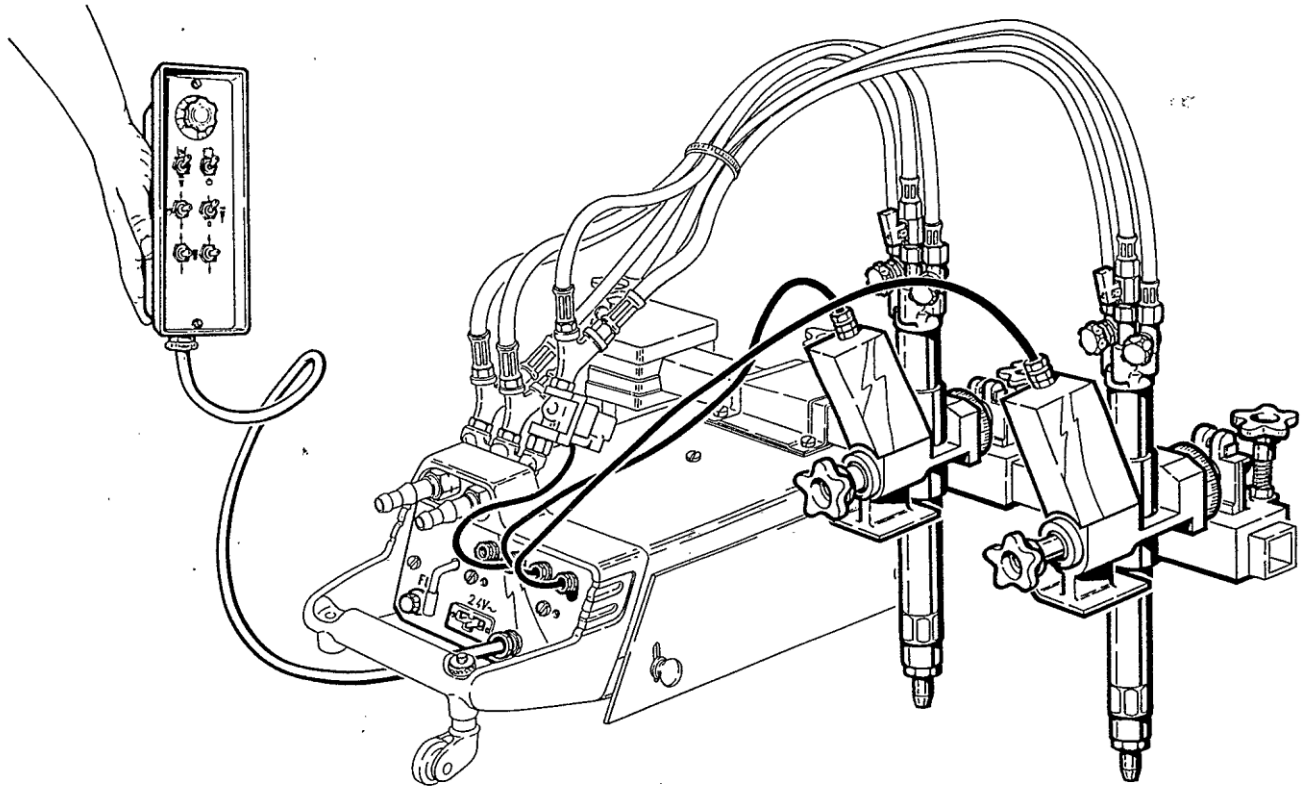
- Used of two torches on same side of carriage :
counterweight/radius arm assembly.
- Used of one torch on each side of carriage :
heatshield assembly
castor assembly.

ASSEMBLY

Mount the torch support on the rack crossbar. screwing down the knob lightly :

- Mount the torch in its support.
- Fit the three Y-connectors.
- Connect the hose harness between the torch and the gas manifold.

9 ELECTRICAL TORCH RAISER



APPLICATION

An electrical system for raising the torch, providing remote control of the torch height relative to the workpiece.

DESCRIPTION

Motorized torch support assembly fitted with electrical supply cable.

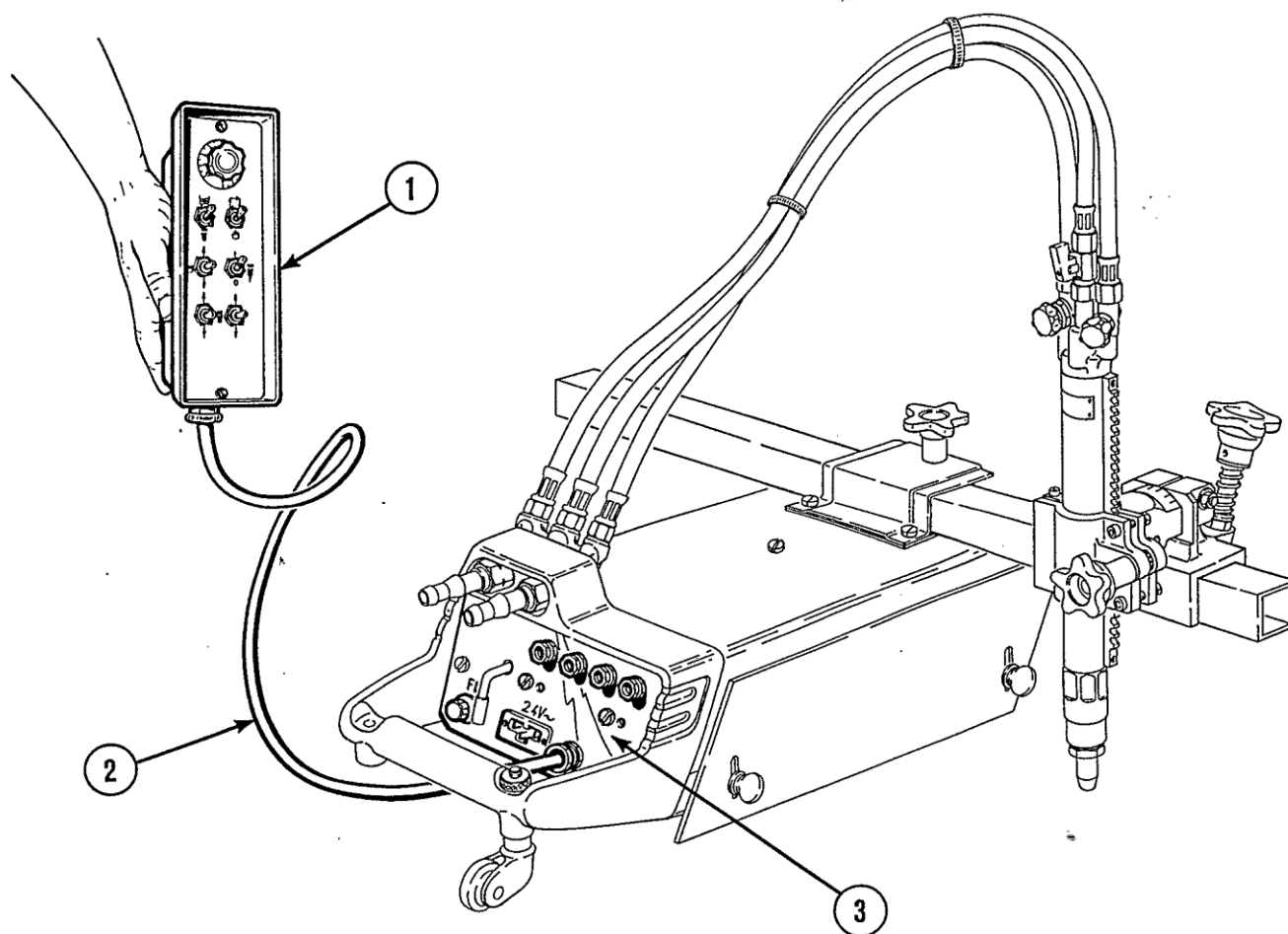
MANDATORY ADDITIONAL EQUIPMENT

- 1 remote control box.
- 1 support.

ASSEMBLY

Mounts in place of the original manual torch raiser.

10 REMOTE CONTROL BOX



APPLICATION

Remote control of the **PYROTOME SE** carriage, the cutting oxygen feed and the electrical system for raising the torch (es) and of the plasma cutting **NERTAJET**.

DESCRIPTION

The supply comprises: a control box (1), a connecting cable 5 m length (2), a simplified front panel for **PYROTOME SE** carriage (3).

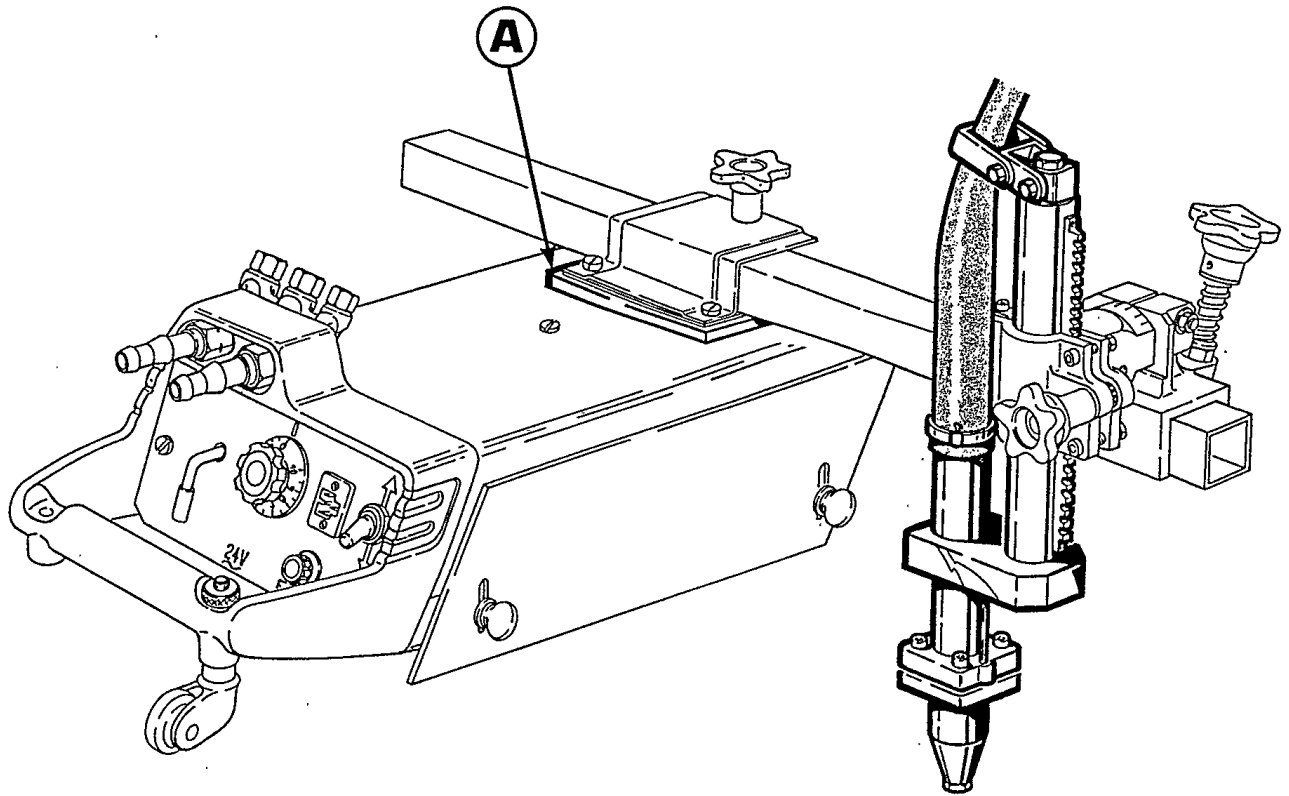
ASSEMBLY

Remove the castoring wheel. Remove the front panel from the **PYROTOME SE**. Disconnect the RVE 30 contactor, the yellow-green wire, and the two motor-wires.

Take the front panel of the remote control and connect the motor to interface circuit. Connect the yellow-green wire to the power outlet 24 volts. Assemble the front panel. Reassemble the castoring wheel.

Tool : Screwdriver.

11 P30 TORCH ADAPTOR



APPLICATION

Plasma cutting using the **NERTAJET P30** torch.

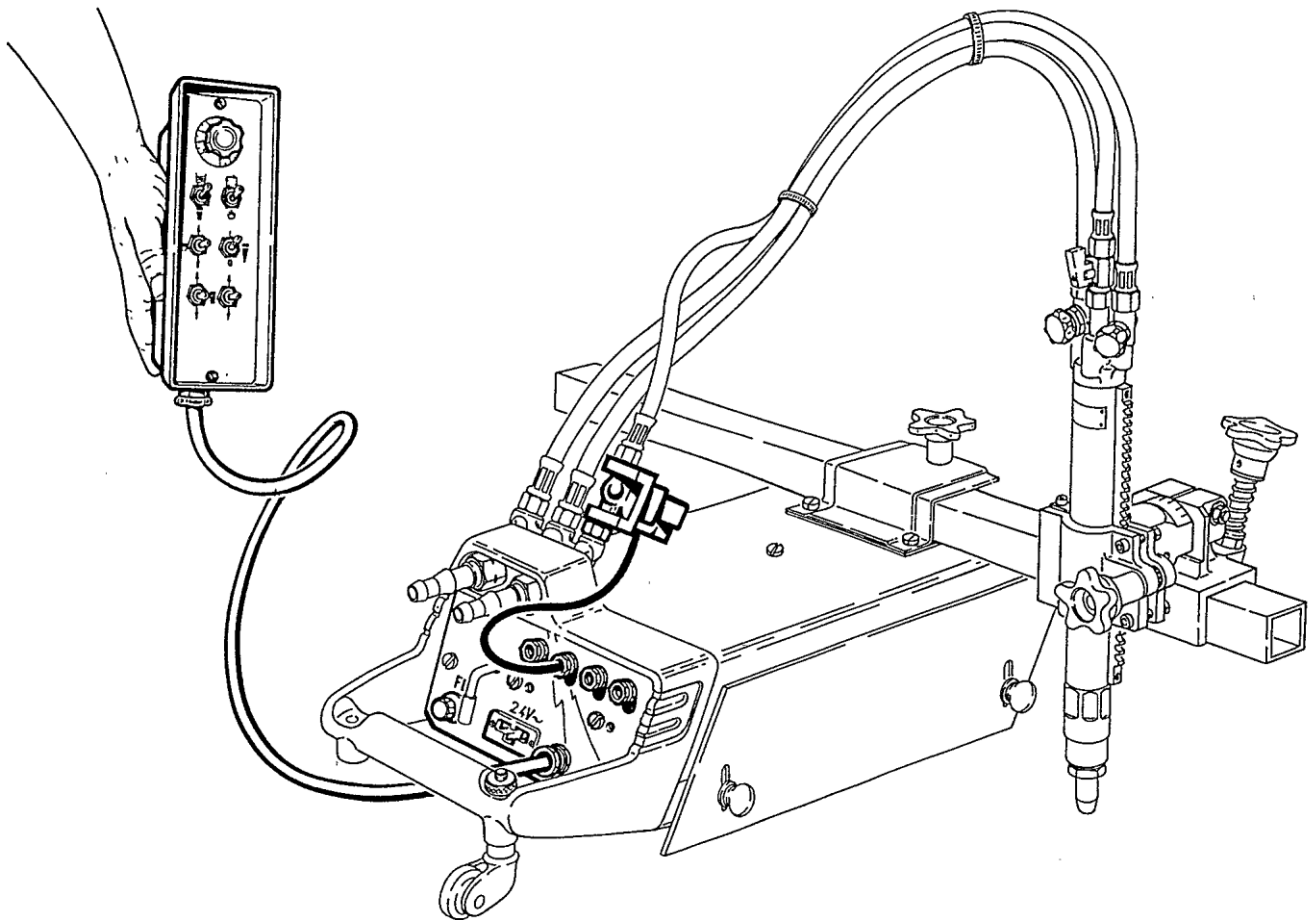
DESCRIPTION

60 mm spacer with screws.

ASSEMBLY

Mounts underneath the crossbar support.

12 CUTTING SOLENOID VALVE



APPLICATION

Remote control of the cutting oxygen feed.

DESCRIPTION

24 V solenoid valve with connections and feeding cable.

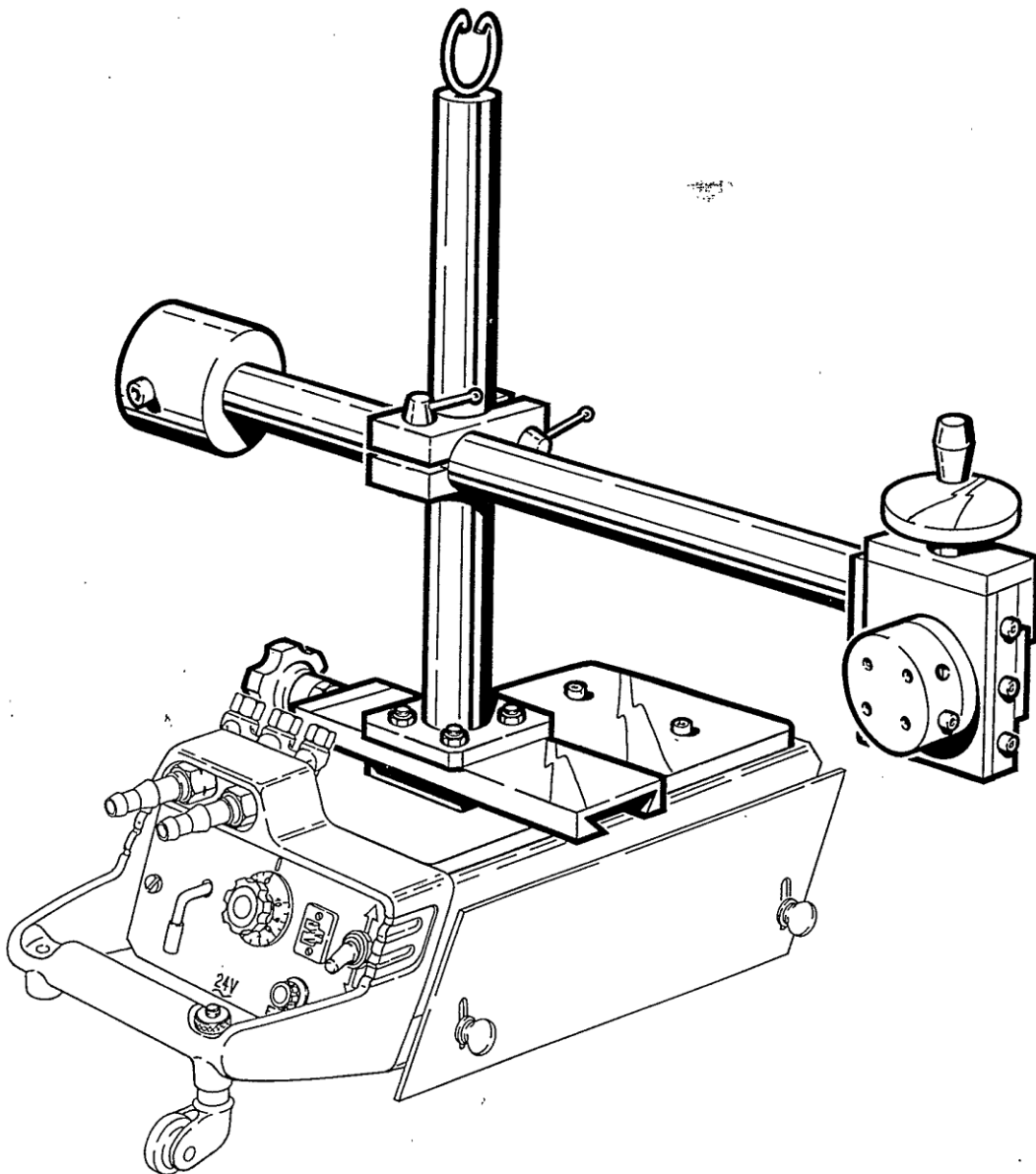
MANDATORY ADDITIONAL EQUIPMENT

Remote control box.

ASSEMBLY

At the outlet from the gas manifold, shown in the drawing.
Electrical connection as shown in synoptical diagram.

13 TORCH SUPPORT ASSEMBLY



APPLICATION

Mounting G2 torch or **CPM 200** torch or miscellaneous tools.

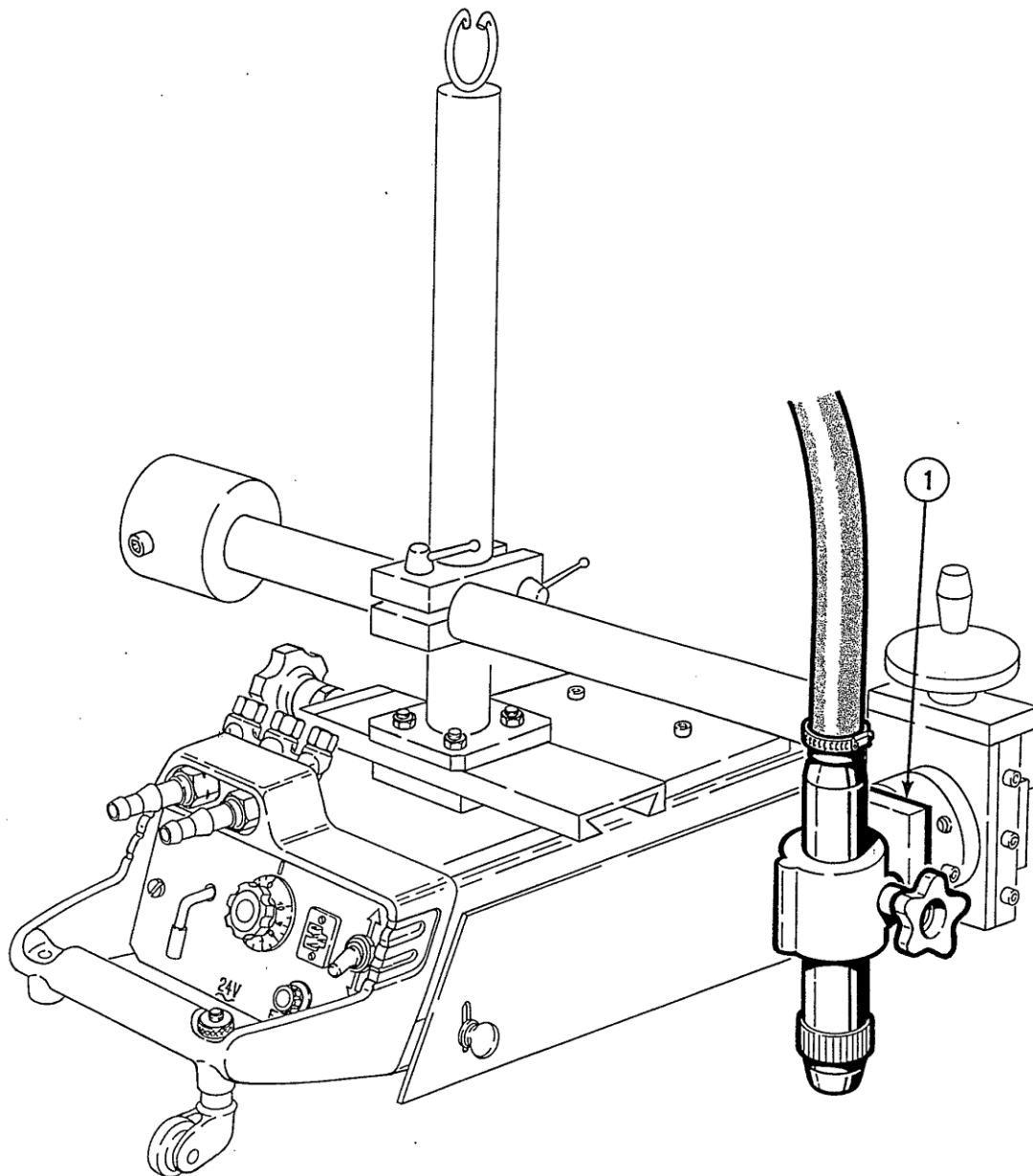
DESCRIPTION

Adaptor plate, slide with 150 mm horizontal travel, torch support assembly, mounting bracket, slide with 50 mm vertical travel, rotation unit, counterweight, nuts and bolts.

ASSEMBLY

As shown in drawing.

14 CPM 200 TORCH ADAPTOR



APPLICATION

Plasma cutting using the **NERTAJET CPM 200** torch.

DESCRIPTION

Clip support (1).

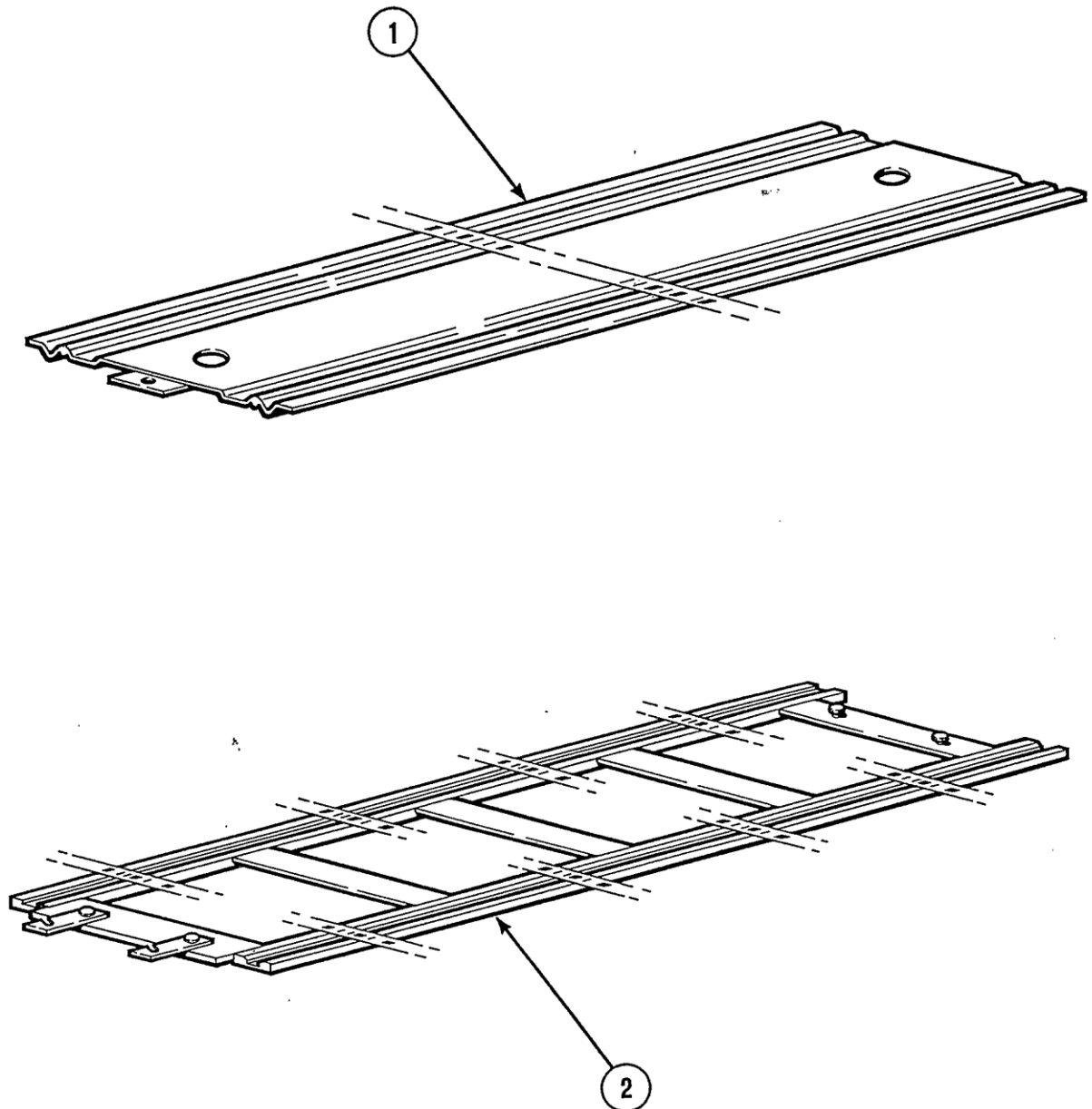
MANDATORY ADDITIONAL EQUIPMENT

Torch support assembly.

ASSEMBLY

As shown in drawing.

15 RUNWAY



USE

These runways, put on a support on punching sheet, make a very definite guide of the truck.

DESCRIPTION

Two runways are now marketed :

- (1) Dished runway length 2 m.
- (2) Worked runway length 1 ,7 m.

ASSEMBLING

Each part is made to be easily added to other equivalent parts.

E - MAINTENANCE

MAINTENANCE

The **PYROTOME SE** requires little maintenance, all component parts of which have been designed for a long service life under intensive conditions of use.

Be this as it may, minimal maintenance operations will contribute to maintaining the unit in perfect working order .

Specifically, the various adjustments devices should be kept perfectly clean. Particular attention should be paid to the cutting heads, as the obtaining of high-quality cuts is dependent on their condition.

MAINTENANCE OPERATIONS AND RECOMMENDED FREQUENCIES

A: DAILY

Every day if necessary, following each utilization of the apparatus :

.Check if the cutting nozzle is in good condition.

.Brush the oxide projections out of the most exposed parts and in particular, out of the driving wheels.

B : WEEKLY

Or every 60
working
hours

First, carry out the A/ operation, then clean off and grease the sliding parts in the suitable way explained here-after.

Parts concerned : rack crossbar and pinion, torch gas tube and its rack, steerable wheels and castors.

Advised cleaning way : free every part from dust and brush it first with gas oil, then with a very liquid oil and finally, wipe it with a clean cloth.

C: MOUNTLY

Or every
200 working
hours

Following A/ and B/ operations, check and adjust the sliding slack of the torch inside the electrical torch raiser.

Check the electrical appliances(especially the feeding cable). Free the plugs and sockets from dust. Ensure the gas proofness of the circuitry.

D: HALF-YEARLY

Or every 1000
working hours

Proceed to A/, B/, C/ operations prior to :

.Freeing the inner part of the motor case from dust.

.Measuring the motor brushes. Should their length be inferior to 5 mm, new ones have to be mounted.(Don't forget to blow the dust off the collector prior to resetting the brushes).

.Make sure that all bolts and screws are fast tightened.

E : YEARLY

Or every 2000
working hours

Similar operation to D/ and in addition :

Check if the grease of the reduction gear is clean enough (AERO SHELL 7 quality).

Replace the parts which are worn out.

SCHEMATIC DIAGRAM – SELF MOVING CARRIAGE

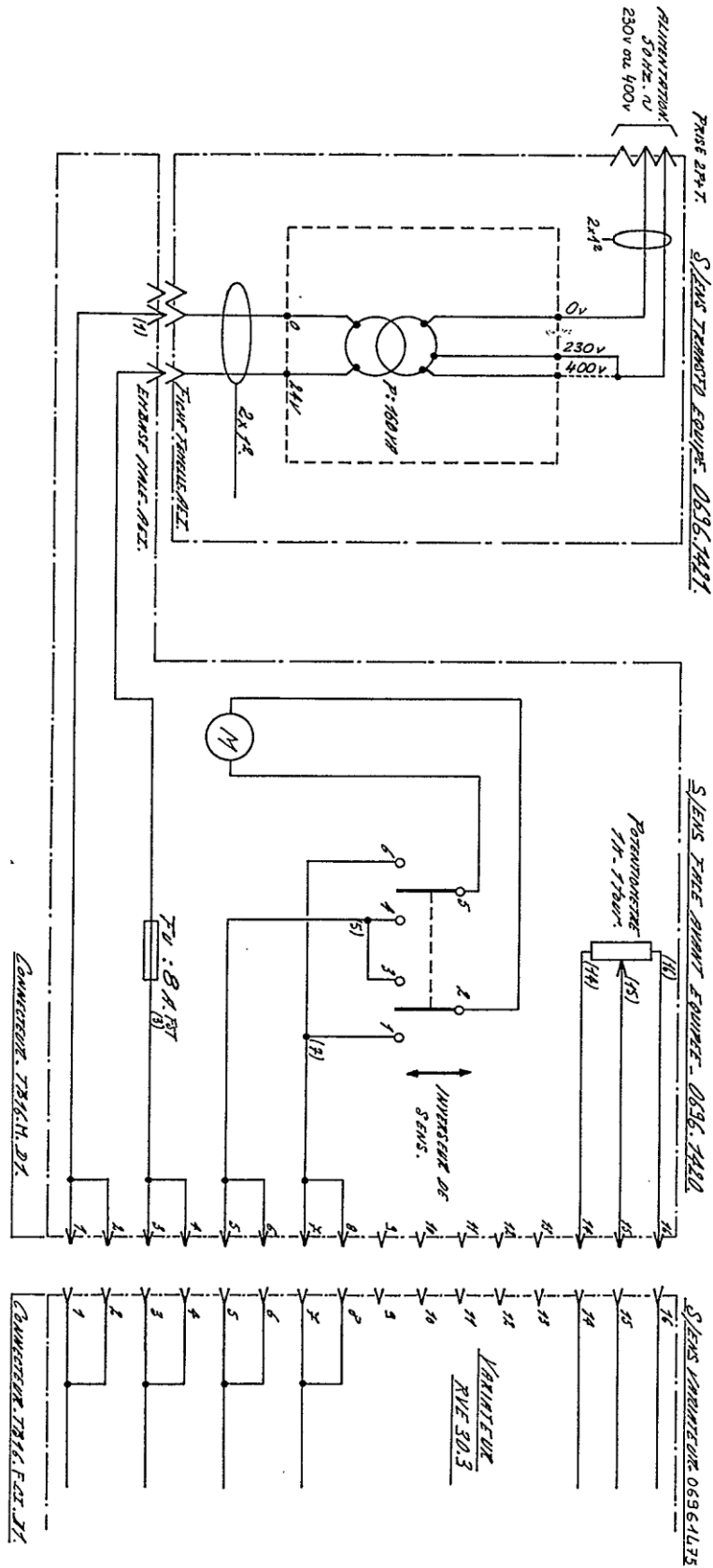
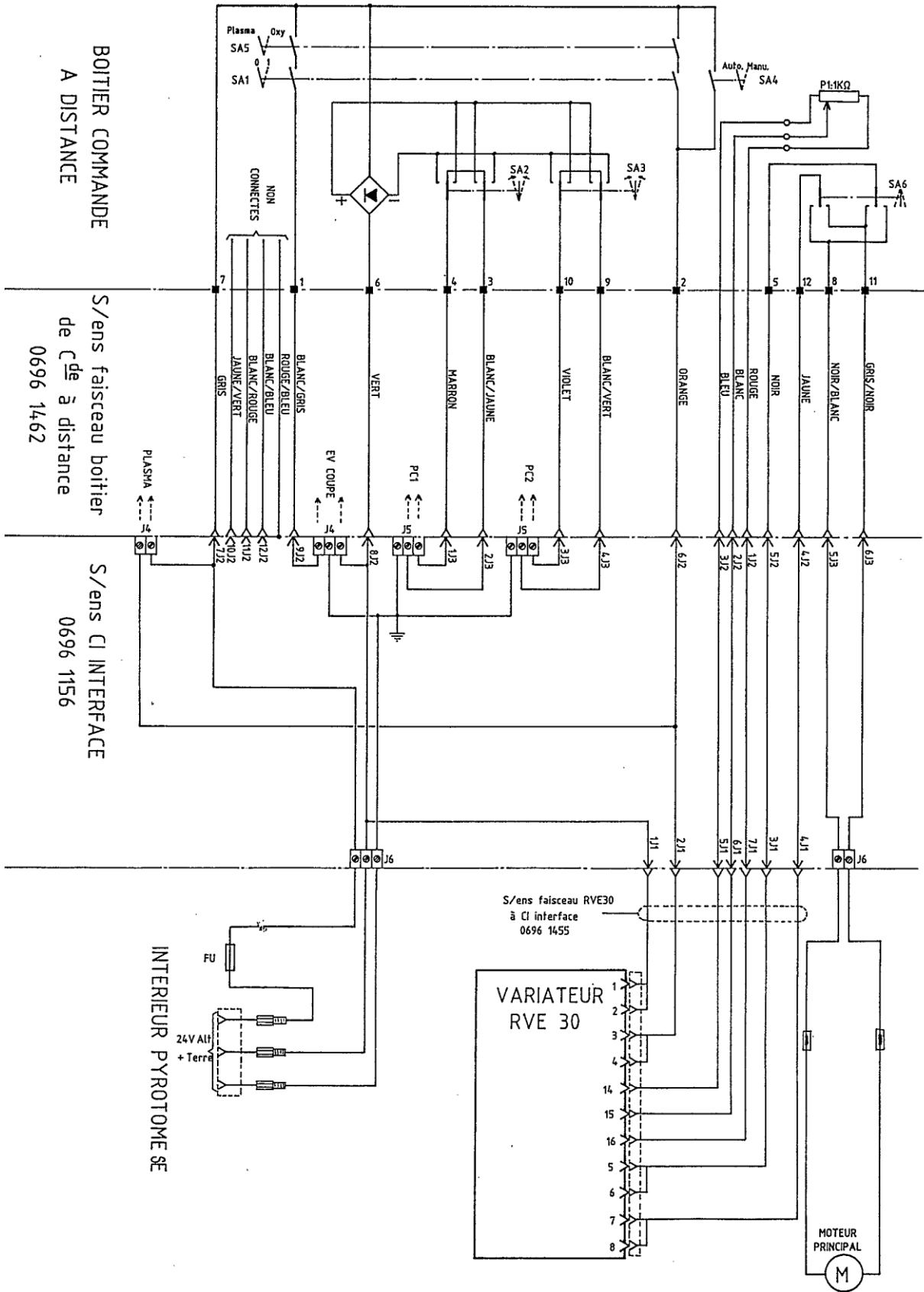


DIAGRAM - REMOTE CONTROL



F - SPARE PARTS

How to order:

The photographs or sketches mark nearly all the parts making up a machine or installation.

The descriptive tables comprise three types of article:

- items normally held in stock: ✓
- articles not held in stock: ✗
- items on request: without markings

(For these, we recommend that you send us a copy of the page of the spare parts list correctly filled in. Please indicate in the Order column the number of parts required and give the type and serial number of your device.)


For the items marked on the photographs or sketches not mentioned in the tables, please send us a copy of the page concerned, and underline the marking in question.

Example:

Item	Ref.	Stock	Order	Designation
E1	W000XXXXXX	✓		Machine interface board
G2	W000XXXXXX	✗		Flow meter
A3	9357 XXXX			Printed front side metal sheeting

✓	normally in stock
✗	not in stock
	on request

➤ For parts order, give the quantity required and put the number of your machine in the box below.


	TYPE:
	Number:

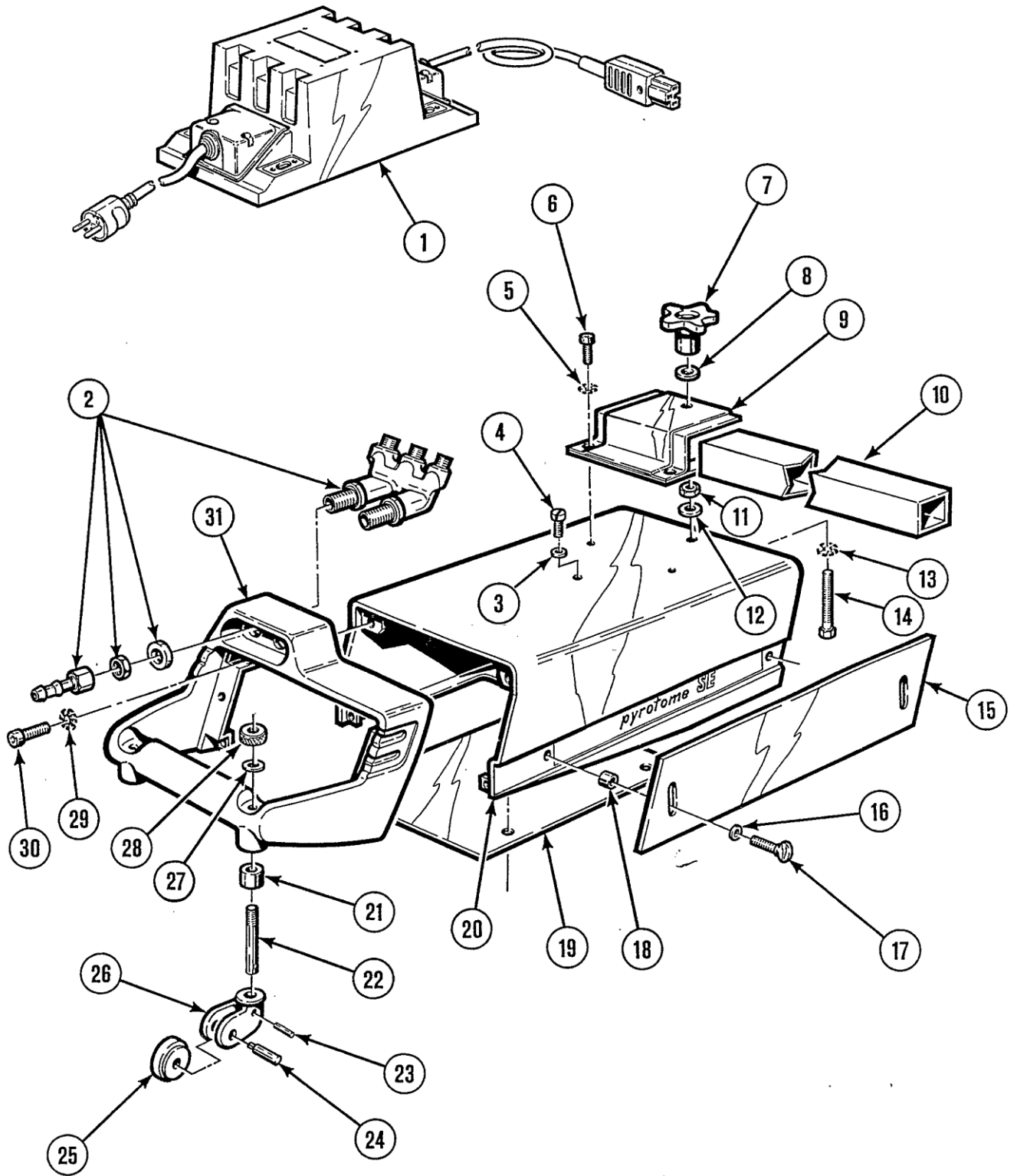
1 - CASING/CROSSBAR SUPPORT/TRANSFORMER ASSEMBLY

✓	normally in stock
✗	not in stock
	on request

Item	Ref.	Stock	Order	Designation
1	W000138866	✗		Transformer subassembly packed
	W000138855	✗		Gas manifold subassembly
2	0696.1171			Machined 3/8" gas manifold
3				M6 washer ref 9658-0619 FINSERT
4				CM 6 x 15 screw
	W000325310	✗		Crossbar support assembly
5				AZ6 washer
6				CHc M6 X 15 screw
7	0668.0361			M10 knob
8				M10U washer
9	0696.1101			Crossbar support
10	W000325309	✗		Rack crossbar
11				HM10 nut
12				M10U washer
13				AZ10 washer
14				HM10 x 70 screw
	W000138851	✗		Heatshield assembly
15	0696.1111			Heatshield
16				M6U washer
17				L VV 6 x 35 screw

➤ For parts order, give the quantity required and put the number of your machine in the box below.

	TYPE:
	Number:

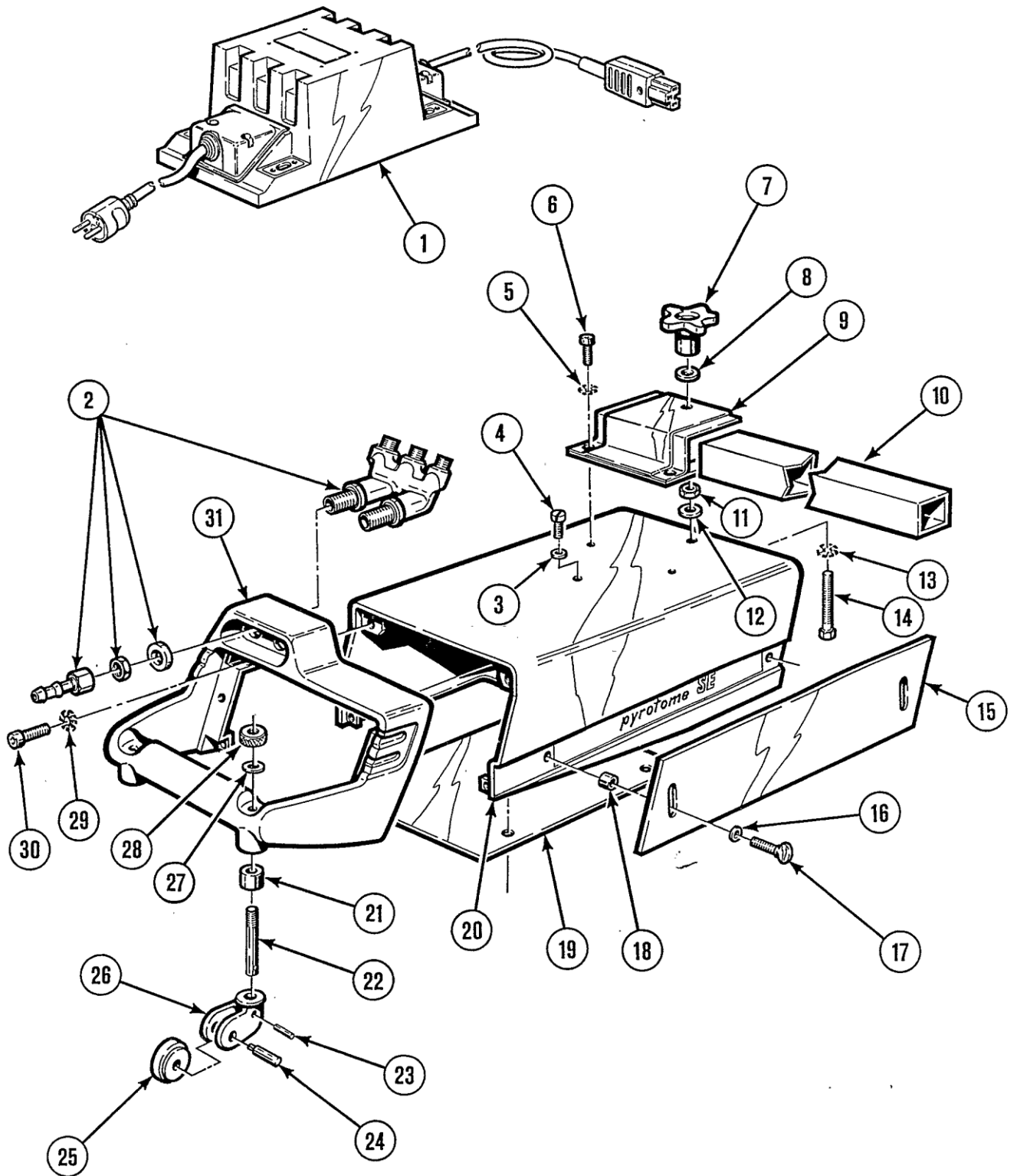


✓	normally in stock
✗	not in stock
	on request

Item	Ref.	Stock	Order	Designation
18	0696.1112			Spacer
19	0696.1406			Casing
20	0696.1404			Sheetmetal casing
	0696.1409			Castor assembly
21	0696.1411			Ring
22	0696.1412			Shaft
23				LGCGO7 ρ3 x 24 pin
24	0696.1055			Roller spindle
25	0696.1054			Roller
26	0696.1052			Yoke
27				M10U washer
28	0696.1056			Knurled nut
29				AZ6 washer
30				CHc M6 x 15 screw
31	0696.1033			Handle

➤ For parts order, give the quantity required and put the number of your machine in the box below.

CE Type <input type="text"/> Matricule <input type="text"/>	TYPE:
	Number:

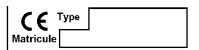


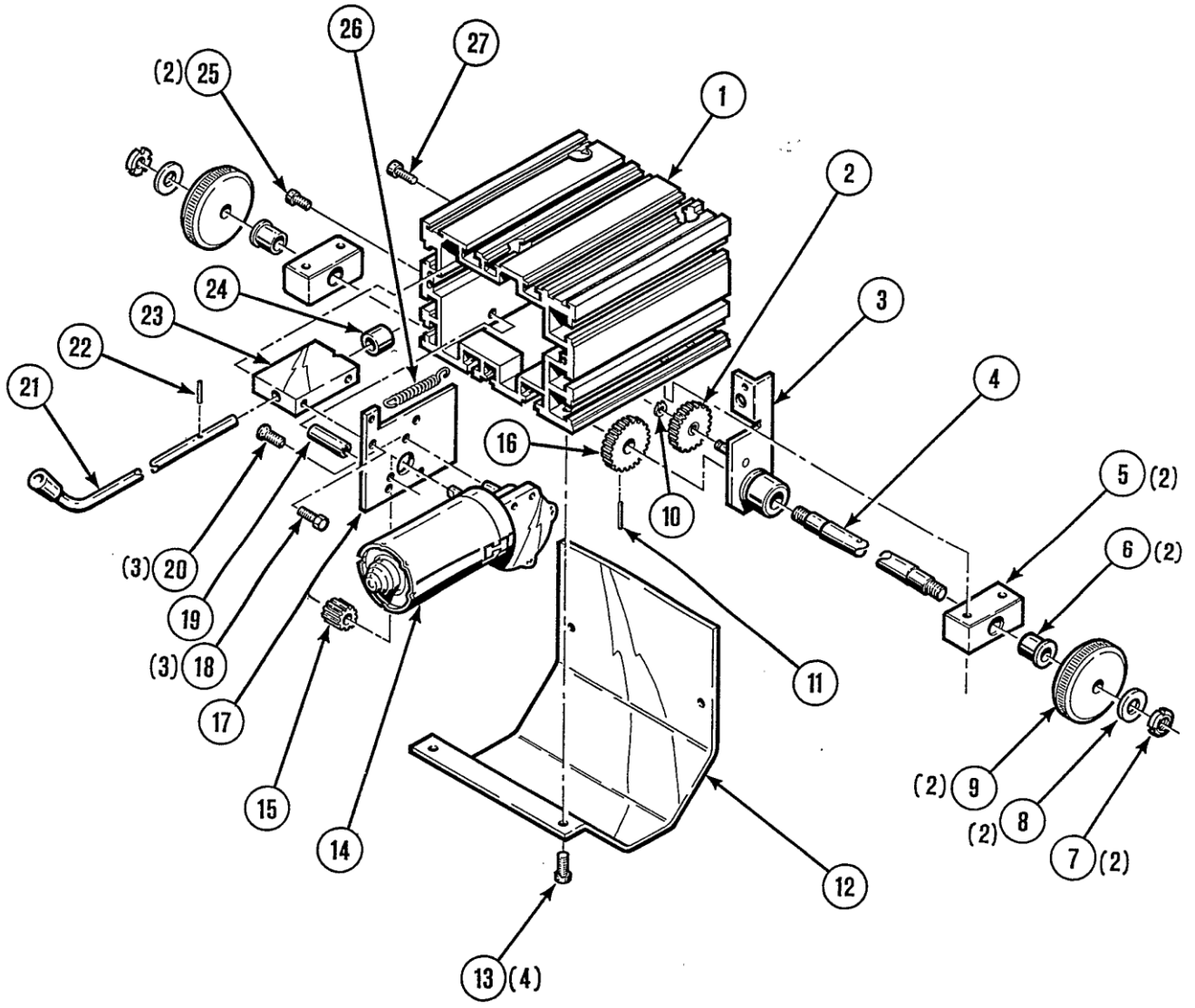
2 - MOTORIZATION SET

✓	normally in stock
✗	not in stock
	on request

Item	Ref.	Stock	Order	Designation
	0696.1425			Motorization set
1	0696.1426			Case block
2	0696.1436			Disengageable pinion
3	0696.1435			Support
4	0696.1433			Axle
5	0696.1431			Bearing plate
6				GLYCODUR GLY PBG 141617F SKF Bushing
7				KM1 SKF nut
8				M12 washer
9	0696.1437			Steel main wheel
10				Circlip ρ5
11				3 x 20 "Mécanindus" pin
12	0696.1405			Motor case
13				CHc M6 x 25 screw
14	0696.1445			Type 402887 SWF motor
15	0696.1430			Motor pinion

➤ For parts order, give the quantity required and put the number of your machine in the box below.

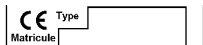
	TYPE:
	Number:

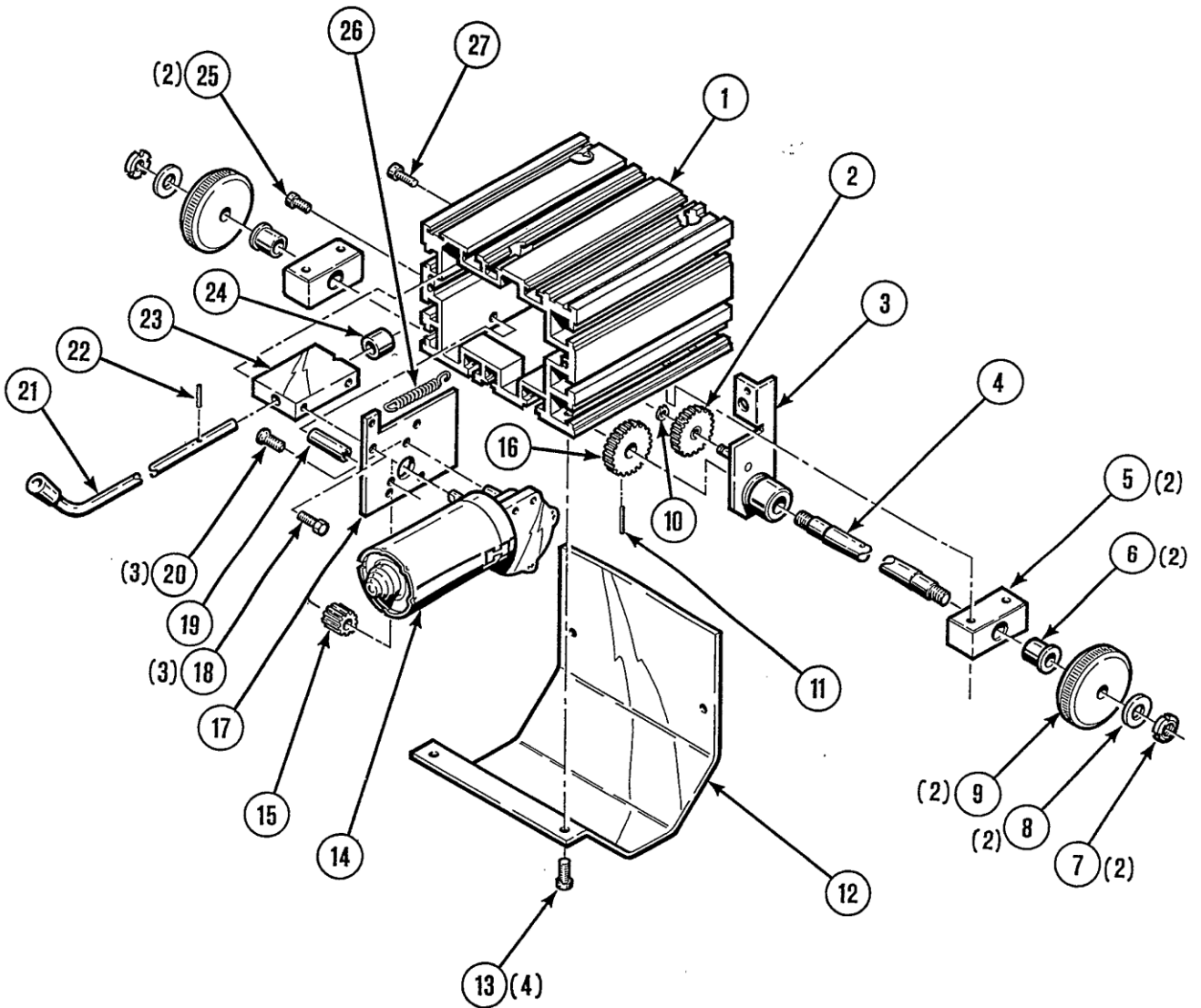


✓	normally in stock
✗	not in stock
	on request

Item	Ref.	Stock	Order	Designation
16	0696.1434			Pinion
17	0696.1427			Motor support
18				HM6 x 12 screw
19	0696.1428			Spacer
20				FHCM6x12 screw
21	0696.1439			Disengaging rod
22				Needle INA -NR 4 x 19,8
23	0696.1429			Tie support upper motor
24	0696.1438			Disengaging washer
25				CHcM6x16 screw
26				LEDUC ref.530 spring
27				CHcM6x20 screw

➤ For parts order, give the quantity required and put the number of your machine in the box below.

	TYPE:
	Number:

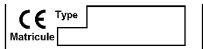


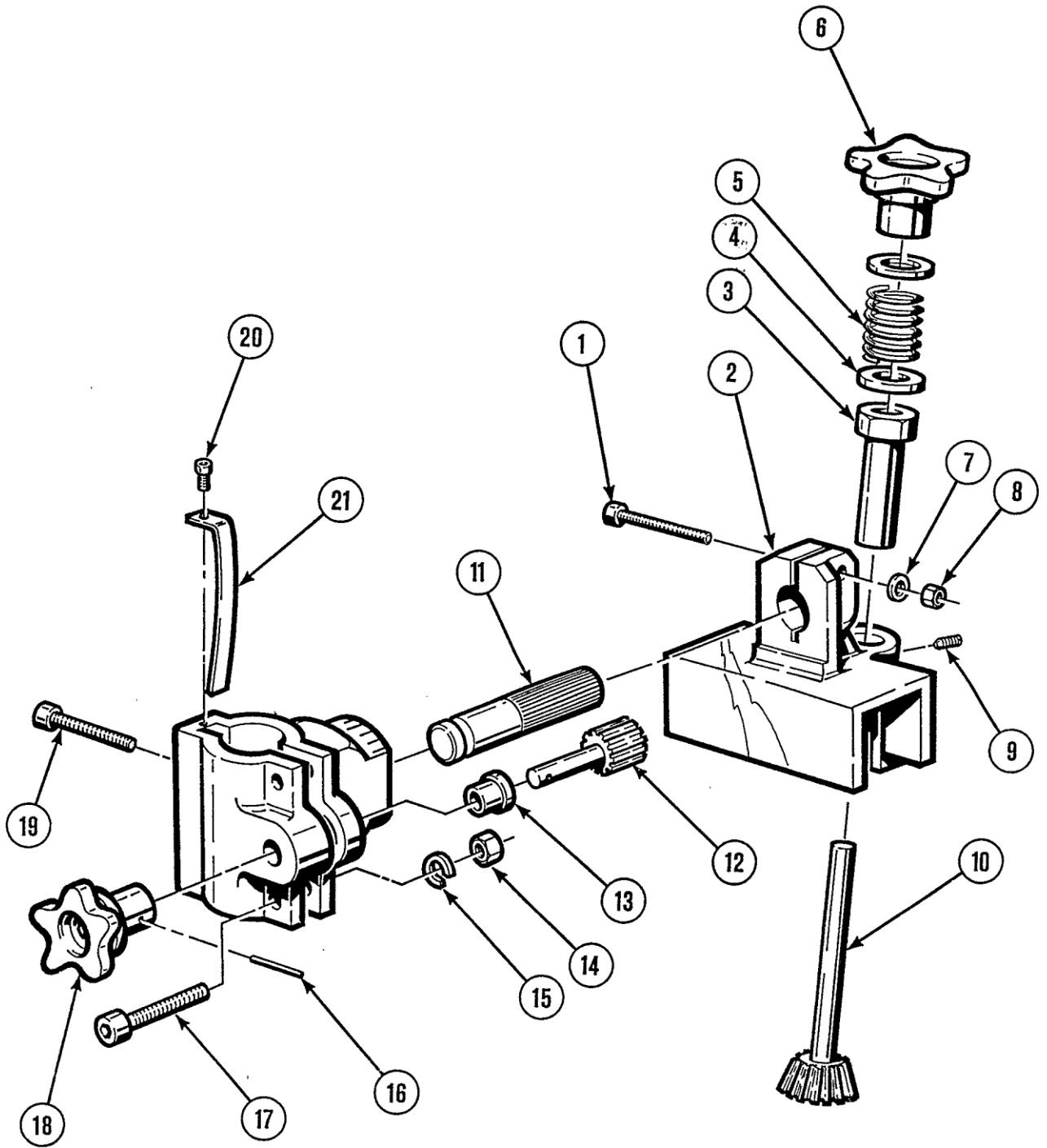
3 - TORCH HOLDER SUBASSEMBLY

✓	normally in stock
✗	not in stock
	on request

Item	Ref.	Stock	Order	Designation
	W000138852	✗		Torch holder subassembly
	0696.1120			Torch holder heatshield subassembly
1				CHc M6 x 40 screw
2	0696.1121			Torch holder heatshield
3	0696.1122			Excentric dush
4				Z10 U washer
5				Olma T210 x 16 x 40 spring
6	W000138669	✗		10 mm knob
7				M6U washer
8				HM6 nut
9				M5 x 5 socket head screw
10	0696.1125			Pinion/shaft member
	0693.0135			Collar subassembly
11	0696.1124			Collar spindle
12	W000138710	✗		Pinion
13				Ring Métafram BP25 CIO 13x16
14				M6 snepnut nut
15				W6 washer
16				ρ3 x 20 mecanindus pin
17				CHc M6 x 30 screw
18	W000138669	✗		10 mm knob
19				CHc M8 x 30 screw
20				CHc M3 x 12 screw
21	W000138706	✗		Spring

➤ For parts order, give the quantity required and put the number of your machine in the box below.

	TYPE:
	Number:



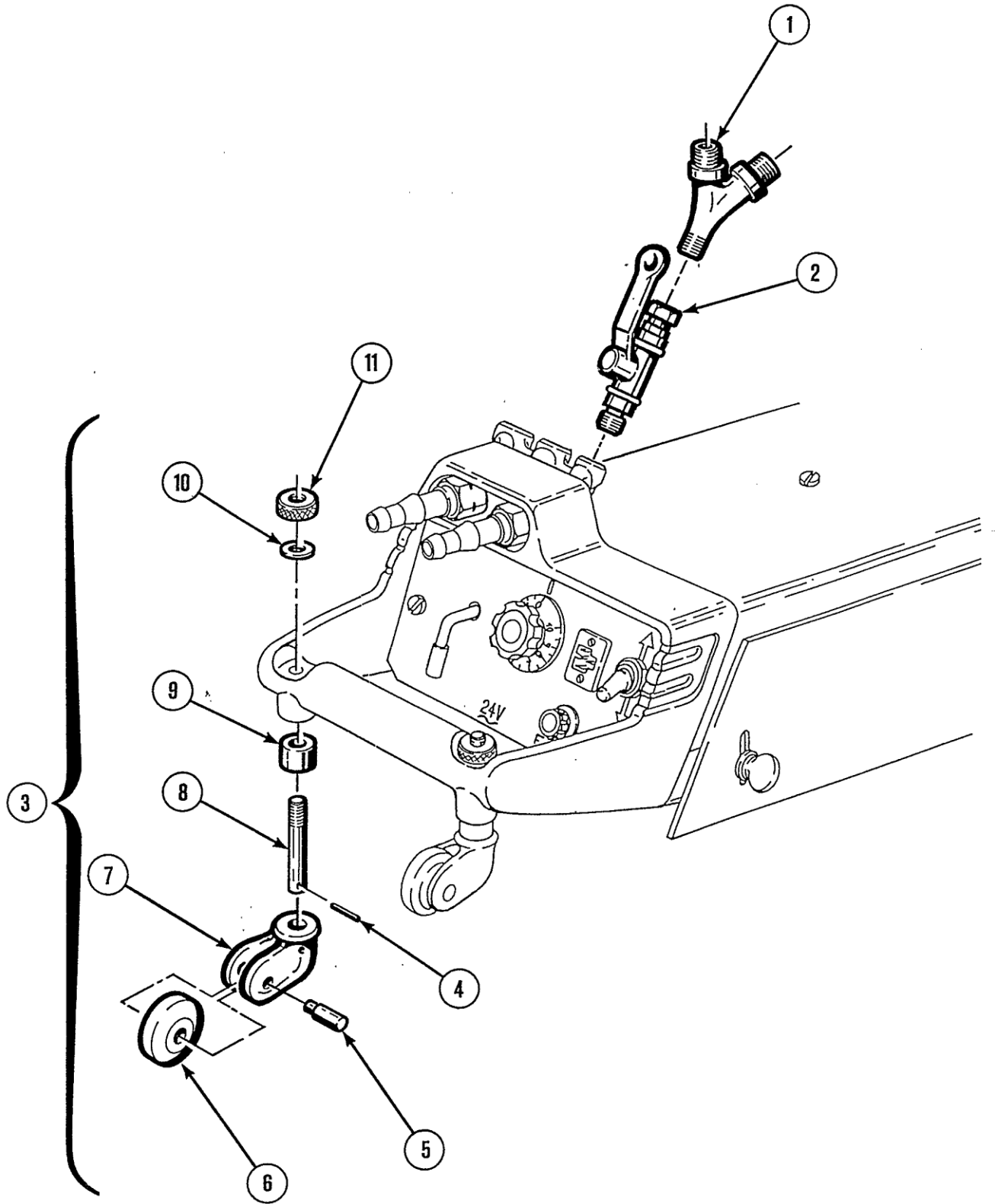
4 - VALVE/CONNECTOR/CASTOR SUBASSEMBLY

✓	normally in stock
✗	not in stock
	on request

Item	Ref.	Stock	Order	Designation
1	0696.1155			3/8" RH OX connector
	0696.1156			3/8" LH gaz connector
2	W000138860	✗		1/4 TURN 3/8 VALVE SUBASSEMBLY
	0022.1666			Oxygen valve
	0696.1241			Spherical tip
	0696.1242			3/8 RH nut
	0696.0187			3/8 RH olive connector
				1/4 x 3/8- AVS reduction D 520
	09161.6045			Ring blue mark
3	W000325311	✗		CASTOR ASSEMBLY
4				LGCGO7 ρ3 x 24 pin
5	0696.1055			Roller spindle
6	0696.1054			Roller
7	0696.1052			Roller yoke
8	0696.1412			Yoke spindle
9	0696.1411			Ring
10				M10U washer
11	0696.1056			Knurled nut

➤ For parts order, give the quantity required and put the number of your machine in the box below.

<div style="display: flex; align-items: center;"> <div style="border: 1px solid black; padding: 2px; margin-right: 5px;"> CE Type <input style="width: 40px;" type="text"/> </div> <div style="border: 1px solid black; padding: 2px; margin-right: 5px;"> Matricule <input style="width: 40px;" type="text"/> </div> </div>	<div style="border-bottom: 1px solid black; margin-bottom: 5px;"> TYPE: <input style="width: 100%;" type="text"/> </div> <div style="border-bottom: 1px solid black;"> Number: <input style="width: 100%;" type="text"/> </div>
--	---

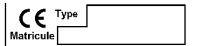


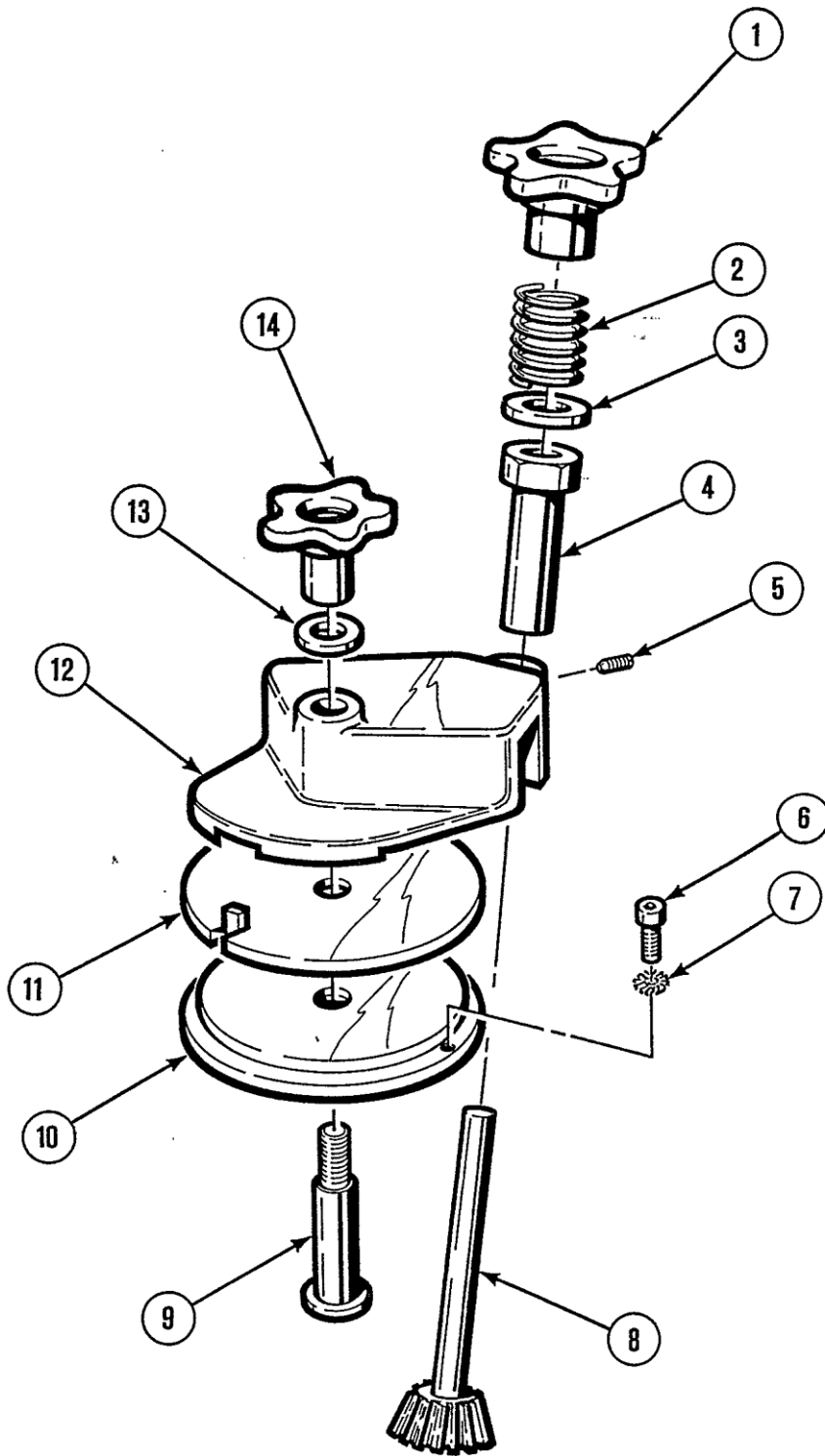
5 - TURRET SUBASSEMBLY

✓	normally in stock
✗	not in stock
	on request

Item	Ref.	Stock	Order	Designation
	W000138853	✗		Turret subassembly
1	W000138669	✗		ρ10 knob
				OLMA T210 x16x40 spring
2				Z10 U washer
3	0696.1122			Excentric dush
4				Hc M5 x 5 socket-head screw
5				CHc 6x15 screw
6				CRIBO 31,5 x 16,3 x 0,80 washer
7	0696.1125			Pinion/shaft member
8	0696.1132			Turret spindle
9	0696.1131			Turret base
10	0696.1133			Support plate
11	0696.1134			Turret
12				M10U washer
13	0668.0361			M10 knob

➤ For parts order, give the quantity required and put the number of your machine in the box below.

	TYPE:
	Number:




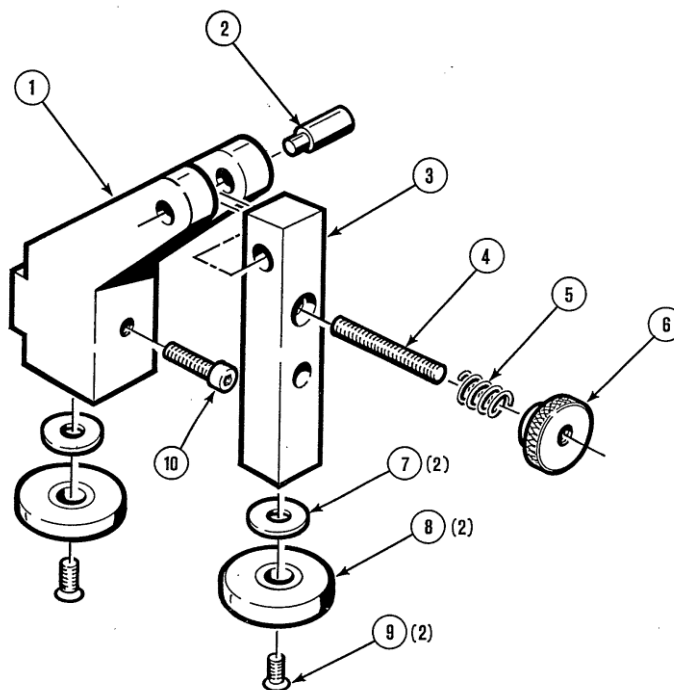
6 - LATERAL GUIDE EQUIPMENT

✓	normally in stock
✗	not in stock
	on request

Item	Ref.	Stock	Order	Designation
	W000138856	✗		Lateral guide equipment
1	0696.1177			Guide body
2	0696.1180			Pivot axis
3	0696.1179			Articulated support
4	0696.1178			Adjuster screw
5				OLMA TI 8 x 14 x 25 spring
6	0696.1181			Knurled nut
7				M6U washer
8	W000140186	✗		Bearing
9				FHC/I90 M6 x 20 screw
10				CHC M6 x 35 screw

➤ For parts order, give the quantity required and put the number of your machine in the box below.

	TYPE:
	Number:



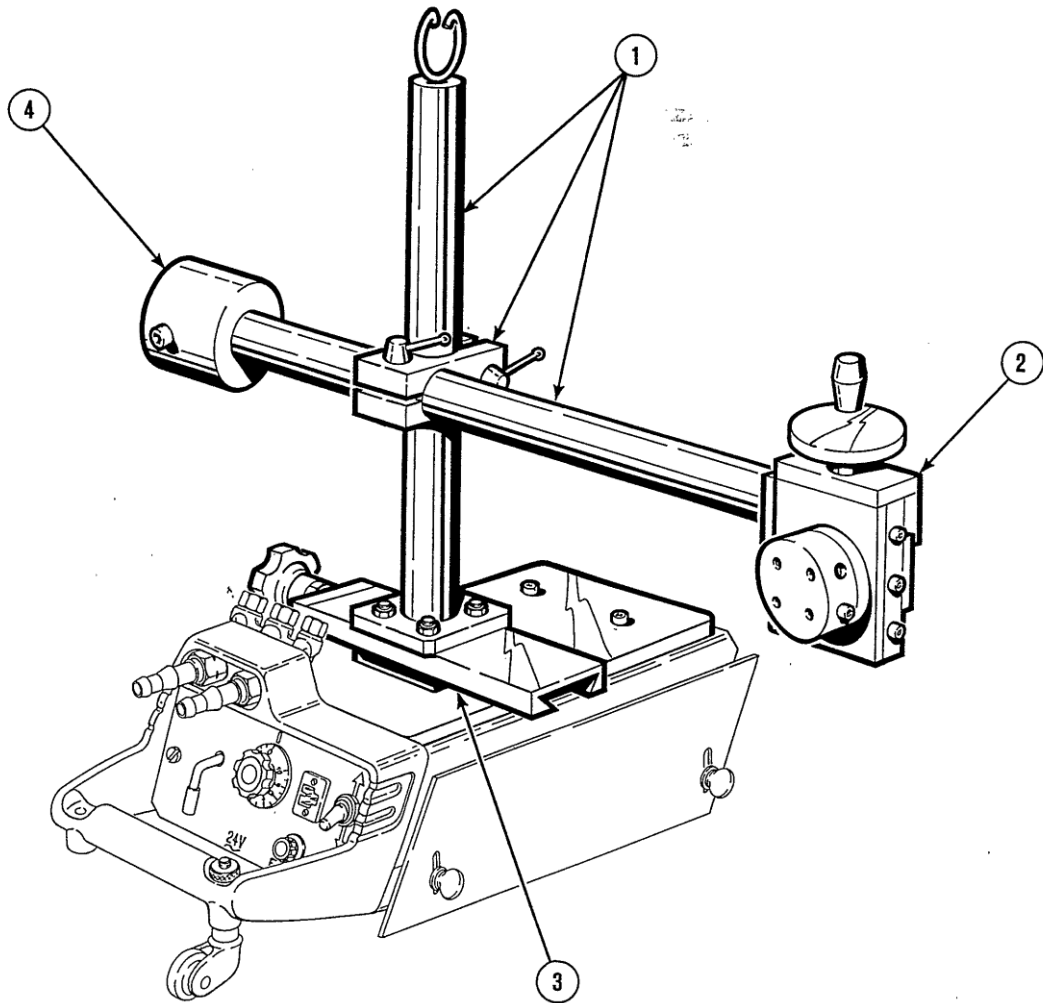
7 - TORCH SUPPORT ASSEMBLY

✓	normally in stock
✗	not in stock
	on request

Item	Ref.	Stock	Order	Designation
	0696.1215			Torch support assembly
1	9120.6020			Torch support subassembly
2	W000315508	✗		Manual slide assembly
3	W000315323	✗		Manual slide assembly
4	0696.1223			Counterweight

➤ For parts order, give the quantity required and put the number of your machine in the box below.

CE Type <input type="text"/> Matricule <input type="text"/>	TYPE:
	Number:




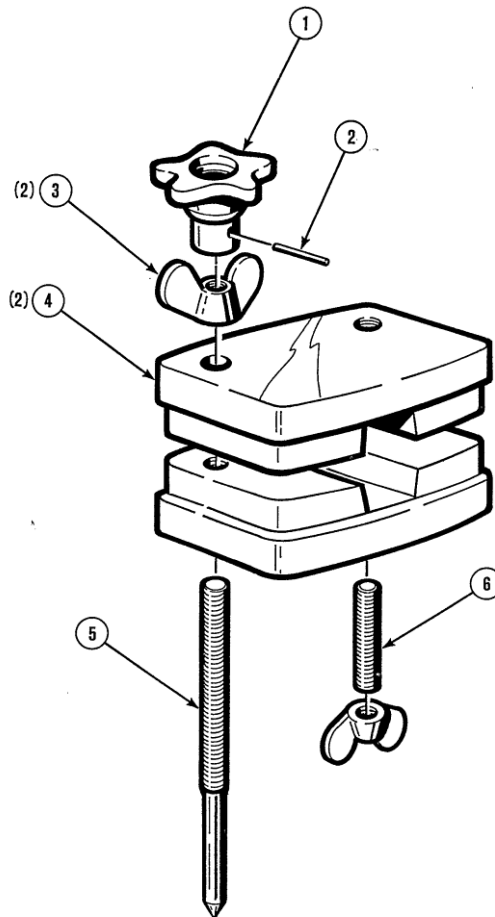
8 - COUNTERBALANCE/RADIUS ARM SUBASSEMBLY

✓	normally in stock
✗	not in stock
	on request

Item	Ref.	Stock	Order	Designation
	W000138857	✗		Counterbalance/radius arm subassembly
1	W000138669	✗		M10 knob
2			↑	ρ3 x 20 Mecanindus pin
3				M14 wingnut
4	0696.1191			Half counterweight
5	0696.1192			Compass point stud
6				JALDER M14 x 100 stud

➤ For parts order, give the quantity required and put the number of your machine in the box below.

	TYPE:
	Number:



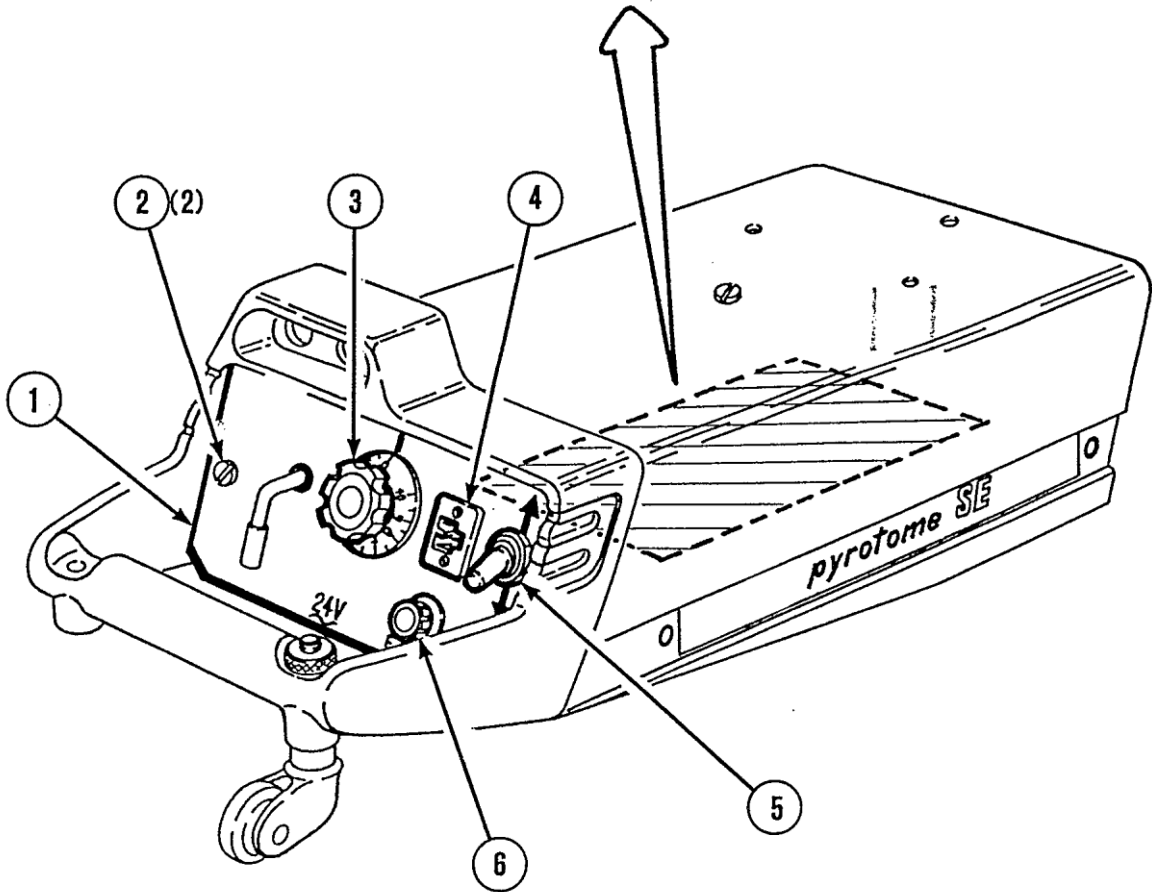
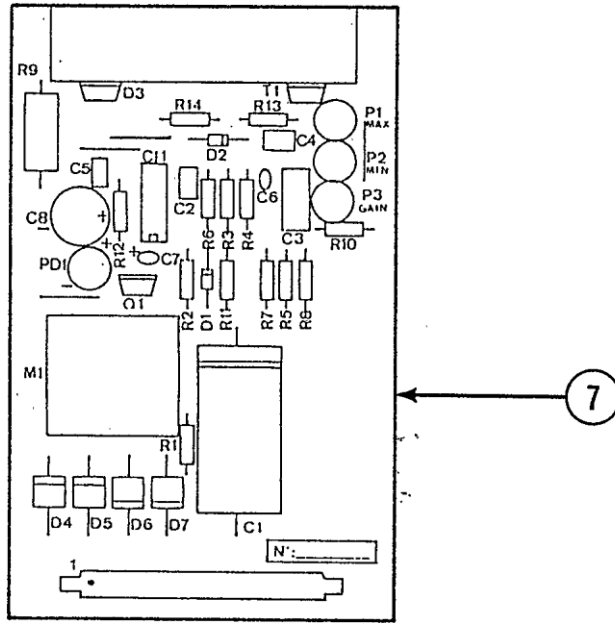
9 - FRONT PANEL ASSEMBLY SELF MOVING CARRIAGE

✓	normally in stock
✗	not in stock
	on request

Item	Ref.	Stock	Order	Designation
	0696.1420			Front panel assembly
1	0696.1407			Front plate
	0696.1408			Silkscreen printing/process front plate
2				CB 5 x 10 screw
				M5U washer
3	W000147301	✗		Potentiometer PE 30 AM
	0019.1047			Potentiometer switch "STOCKLI" 10.75.60
				AZ 10 washer
4	0013.4016			Male socket Ref. 1815905 "AEI"
				Screw FB/90° M3 x 12
				Fan washer ρ3
				HM3 nut
5	W000137809	✗		Two pole switch 649N "APR"
6	0020.0016			Fuseholder 5 x 20
	W000147335	✗		Fuse 5 x 20 8A FST
7	W000138869	✗		Variator

➤ For parts order, give the quantity required and put the number of your machine in the box below.

<div style="display: inline-block; border: 1px solid black; padding: 2px; margin-left: 5px;"> Type: <input style="width: 50px;" type="text"/> Matricule: <input style="width: 50px;" type="text"/> </div>	TYPE: <input style="width: 100%; height: 20px;" type="text"/> Number: <input style="width: 100%; height: 20px;" type="text"/>
--	--

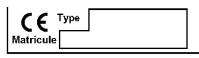


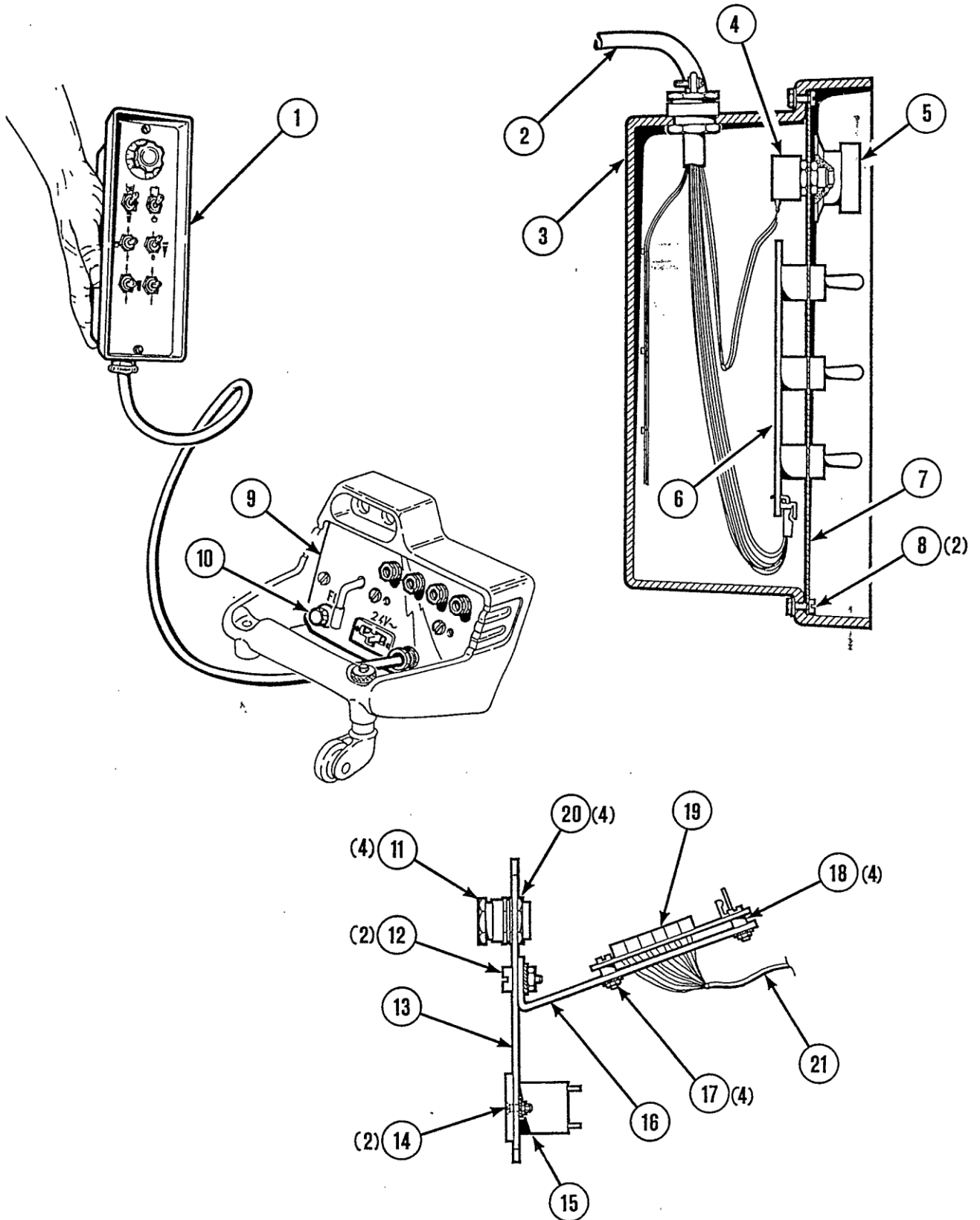
10 - REMOTE CONTROL ASSEMBLY

✓	normally in stock
✗	not in stock
	on request

Item	Ref.	Stock	Order	Designation
	0696.1450			Remote control assembly
1	0696.1465			Remote control box subassembly
2	0696.1462			Remote control box beam assembly
3	0299.6107			Control box
4				P11 VZD "SFERNICE" Potentiometer
5				10.75.60 "STOCKLI" potentiometer switch
6	0696.1459			Printed circuit of remote control assembly
7	0696.1463			Box front plate
8				TC 4 x 8 screw
				MU4 washer
				Hm M4 nut
9	0696.1452			Pyrotome SE front panel subassembly
10	0020.0016			Fuse support 5 x 20 ,
	W000147335	✗		Fuse 5 x20 8A FST
11	0026.3001			Stuffing box 9 Ref. 20620429 "CAPRI"
12				TCB 5 x 10 screw

➤ For parts order, give the quantity required and put the number of your machine in the box below.

	TYPE:
	Number:

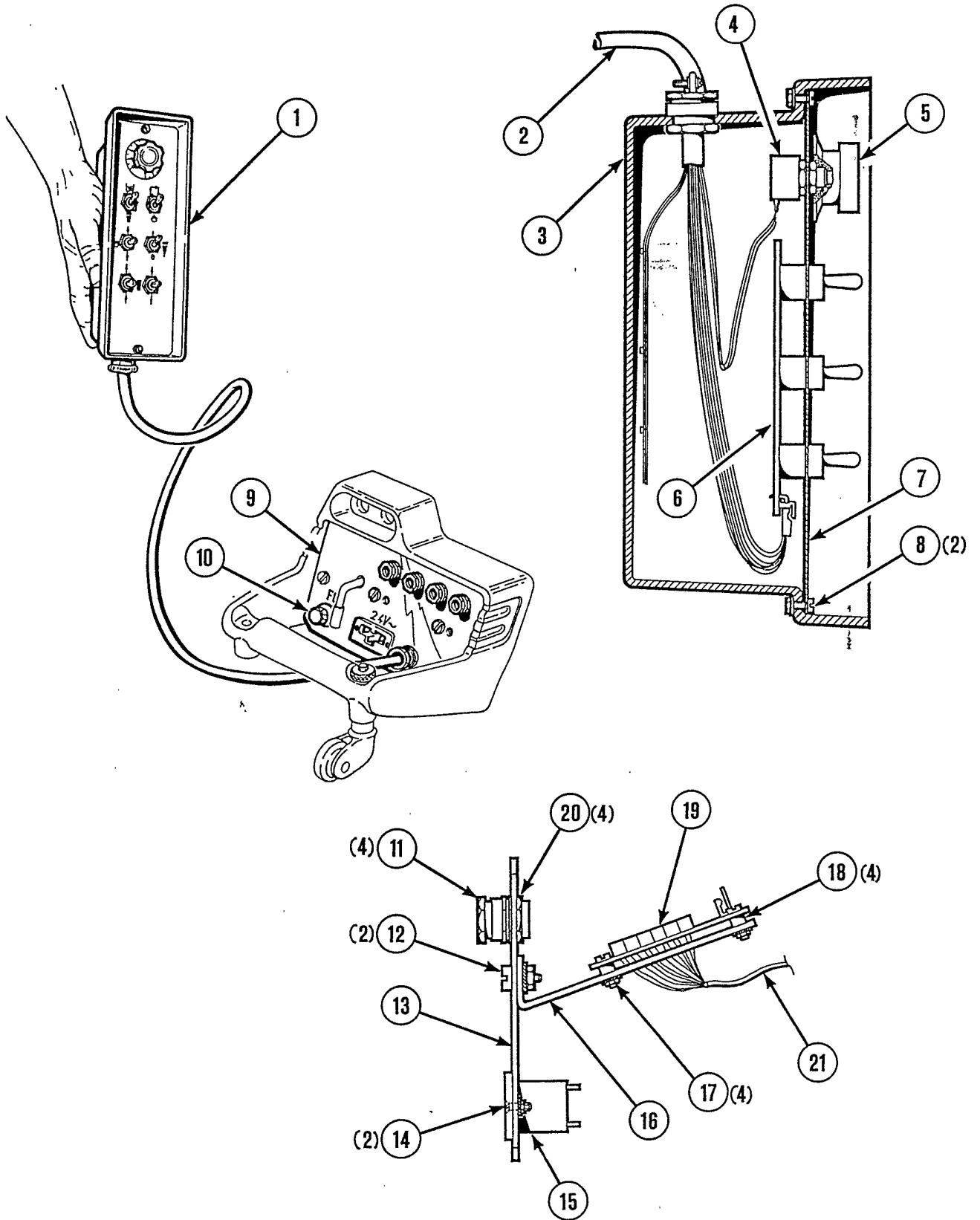


✓	normally in stock
✗	not in stock
	on request

Item	Ref.	Stock	Order	Designation
				AZ5 washer
				HM5 nut
13	0696.1453			Front panel
	0696.1454			Front panel silkscreen printing/process
14				F/90° MJ x 12 screw
				AZ3 washer
				HM3 nut
15	0013.4016			Male socket Ref. 1815905 "AEI"
16	0696.1467			Supporting plate printed circuit
17				TCB 3 x 12 screw
				AZ3 washer
				HM3 nut
18				Spacer ENLIS 4
19	0696.1456			Printed circuit interface assembly
20				Jam nut 9 Ref. 20630029 "CAPRI"
21	0696.1455			Beam RVE 30 to printed circuit interface assembly

➤ For parts order, give the quantity required and put the number of your machine in the box below.

CE Type <input type="text"/> Matricule <input type="text"/>	TYPE:
	Number:



11 - TORSH FEEDING BEAM

✓	normally in stock
✗	not in stock
	on request

Item	Ref.	Stock	Order	Designation
1	7617 1513			Torch
2	W000325596	✗		Beam assembly

➤ For parts order, give the quantity required and put the number of your machine in the box below.

CE Type <input type="text"/> Matricule <input type="text"/>	TYPE:
	Number:

