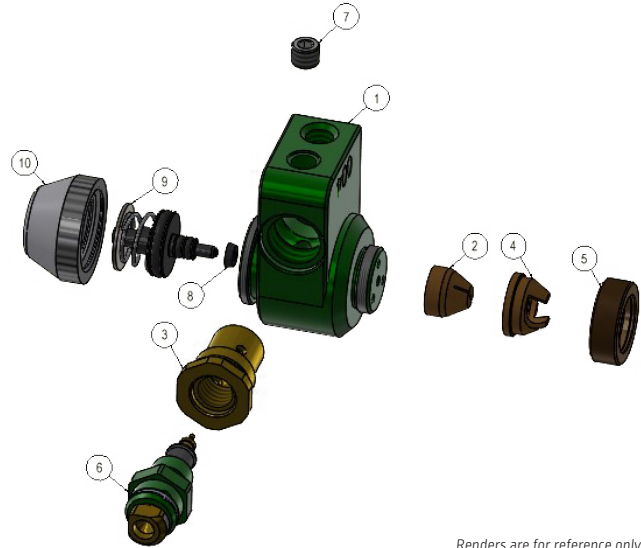


RIMROCK® 004 SPRAY ATOMIZER

REMOTE-TARGETED MINIMAL SPRAY



Renders are for reference only

APPLICATIONS

- Die Casting
- Foundry
- Stamping
- Rubber
- Die Release
- Liquid Parting
- Drawing Oil
- Mold Release

BODY MATERIAL

- Anodized Aluminum

FLOW RATES (AT 60 PSI)

- Air: 6.1 CFM
- Liquid: 1.0 GPM

FILTRATION AND VISCOSITY

- Liquid: 80 Mesh (200 micron)
- Custom requests available

Item Number	Description	A Series Part Number*	Quantity
1	Housing Body	A3145677	1
2	Nozzle	A3031752	1
3	Metering Housing	A3032903	1
4	Adjust Ring	A3031700	1
5	Cap Ring Lock	A3031701	1
6	Metering Screw	A4005681	1
7	Pipe Plug	A2020939	1
8	Orifice	A3032169	1
9	Piston Assembly	A4006808	1
10	Dial Knob	A3032177	1

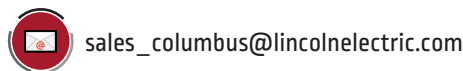
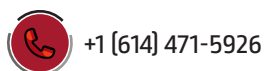
*Part numbers shown correspond to 004-03110. Other configurations will differ.

ORDER CONFIGURATION 004 - 0 1 1
A B C D E

- A - Body Material** **B - Spray Tip Assembly** **C - Adjustable Meter Screw** **D - Maximum Flow Orifice** **E - Air Restriction**
- 0 - Aluminum
 - 1 - Conical Pattern
 - 1 - 1.0 GPM Max
 - 1 - 1.0 GPM Max Orifice
 - 0 - Full Air (No Plug)
 - 2 - 0.040 Internal Fan
 - 1A - 0.06 GPM Fixed
 - 1 - 33% Restriction (One Plug)
 - 3 - 0.020 Internal Fan
 - ...More available
 - 2 - 66% Restriction (Two Plugs)

Contact us for custom configurations not shown in options list

CONTACT LINCOLN ELECTRIC AUTOMATION - COLUMBUS



CUSTOMER ASSISTANCE POLICY

The business of Lincoln Electric is manufacturing and selling high quality welding equipment, automated welding systems, consumables, and cutting equipment. Our challenge is to meet the needs of our customers, who are experts in their fields, and to exceed their expectations. On occasion, purchasers may ask Lincoln Electric for information or technical information about their use of our products. Our employees respond to inquiries to the best of their ability based on information and specifications provided to them by the customers and the knowledge they may have concerning the application. Our employees, however, are not in a position to verify the information provided or to evaluate the engineering requirements for the particular weldment, or to provide engineering advice in relation to a specific situation or application. Accordingly, Lincoln Electric does not warrant or guarantee or assume any liability with respect to such information or communications. Moreover, the provision of such information or technical information does not create, expand, or alter any warranty on our products. Any express or implied warranty that might arise from the information or technical information, including any implied warranty of merchantability or any warranty of fitness for any customers' particular purpose or any other equivalent or similar warranty is specifically disclaimed.

Lincoln Electric is a responsive manufacturer, but the definition of specifications, and the selection and use of specific products sold by Lincoln Electric is solely within the control of, and remains the sole responsibility of the customer. Many variables beyond the control of Lincoln Electric affect the results obtained in applying these types of fabrication methods and service requirements.

Publication LEA-031324TM1-01

© Lincoln Global Inc. All Rights Reserved. All trademarks and registered trademarks are the property of their respective owners.
www.lincolnelectric.com/automation

