

# PRISM® FUME EXTRACTION ARMS

## WALL MOUNTED & MOBILE EXTRACTION ARMS



### Fume Doesn't Stand a Chance

Designed with the welder in mind, Lincoln Electric flexible and telescopic extraction arms are lightweight, dent and scratch resistant. Constructed with a balance system for stability, the arms can be placed in a fixed position easily. The 360° rotatable hood can be positioned at the welding arc to quickly capture fumes, while the baffle controls airflow.

- » Position rotatable hood in any direction to capture fumes
- » Automatic on/off operation with arc sensor
- » Dent and scratch resistance for minimal maintenance
- » Source Capture for welding booth applications or small parts

#### Processes »

Stick, TIG, MIG, Flux-Cored, Pulsed

#### Product Number »

Prism® Wall Mount Fume  
Extraction Arms  
K1655-15 Telescopic 4-6 ft. Counter-Weight  
K1655-14 Telescopic 5-8 ft. Counter-Weight

K1655-8 Flexible 10 ft.  
K1655-9 Flexible 13 ft.

Prism Mobile Fume Extraction Arms  
K2633-5 Flexible 10 ft.  
K2633-6 Flexible 10 ft. with arc sensor/  
lamp kit  
K2633-7 Flexible 13 ft.  
K2633-8 Flexible 13 ft. with arc sensor/  
lamp kit



## DURABLE EXTRACTION ARMS

The Prism Wall Mount Extraction Arms can be mounted on the wall, or connected to the base of a Prism Mobile System.

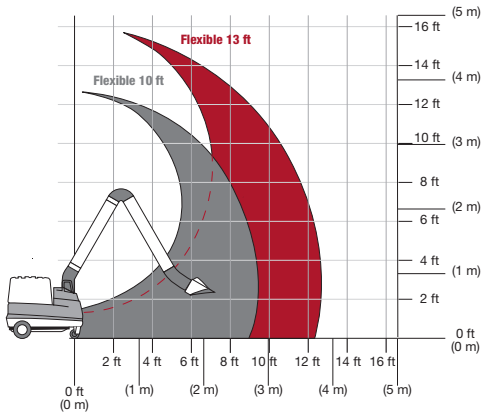
**Telescopic** - Counter Weight Arms - Primarily used for educational welding booth applications or for welding next to a wall with low ceiling heights

**Flexible Arms** - Primarily used for industrial applications in the middle of a welding area where there are higher ceiling heights and room for the arm to be stored above the mounting bracket.

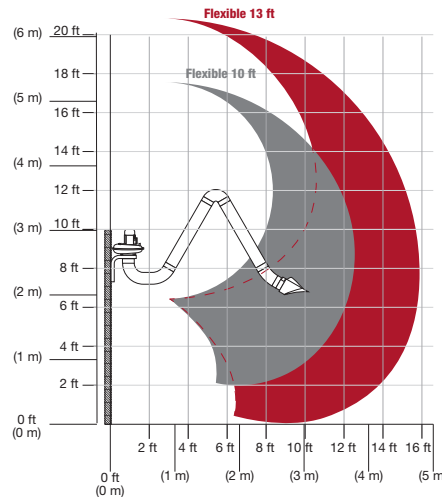
## FUME EXTRACTION ARM REACH

A correctly positioned extraction arm effectively draws welding fume particulate away from the welder and helps to reduce the amount of residual fume particulate that often may linger within a facility. The charts demonstrate the overall reach of each arm. See publication E13.51 for more information on welding booths, curtains, and tales.

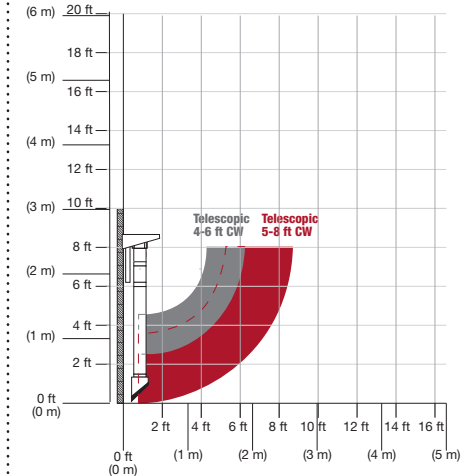
**FIG 1. Prism Mobile Flexible Arm Reach**  
K2633-5, -6, -7, -8



**FIG 2. Wall Mount Flexible Arm Reach**  
K1655-8, -9



**FIG 3. Wall Mount Telescopic Arm with Counter Weight Reach**  
K1655-14, -15



### RECOMMENDED ACCESSORIES FOR WALL-MOUNT FUME EXTRACTION ARMS ONLY



**Prism 2400 Stationary Fan**  
The 1 HP, fan has self-cleaning concave blades and provides an unrestricted airflow of 1200 CFM.  
**Order**  
K1656-9 (115V)  
K2497-13 (230V/50Hz)



**Prism 2400 Starter Overload Switch for 115V, 60Hz / 230V, 50 Hz**  
Provides simple on/off operation when an Arc Sensor/Lamp Kit is NOT used.  
**Order**  
K1494-2 for Prism 2400 Stationary Fan 115V, 60 Hz  
K1494-3 for Prism 2400 Stationary Fan 230V, 50Hz



**230V Conversion Kit for Prism 2400**  
Provides 230V operation of Prism 2400 Stationary Fan when using Arc Sensor/Lamp Kit.  
**Order**  
K1750-1



**Prism 4200 Stationary Fan**  
The 2 HP, 230/3/60 fan has self-cleaning concave blades and provides an unrestricted airflow of 1750 CFM. Includes integrated provision for mounting to a vertical surface.  
**Order**  
K1656-4



**Prism 4200 Starter Overload Switch**  
Provides simple on/off operation when an Arc Sensor/Lamp Kit is NOT used.  
**Order**  
K1494-10 for Prism 4200 Stationary Fan



**Connector, 8 in. (203.2 mm) Duct to Extractor Arm.** This polypropylene flange bolts to the top of the extraction arm and allows for easy connection of an 8-inch duct drop when the extraction arm is integrated into a central fume extraction system. Applicable to the following wall-mount extraction arms: Flexible 10 ft., 13 ft., Telescopic 4-6 ft Counter-Weight and Telescopic 5-8 ft Counter-Weight  
**Order**  
K1657-5



**Prism Wall Mount - 7 ft. (2.1 m) and Prism Wall Mount - 14 ft. (4.3 m) Extension Cranes**  
For large work areas. Extend your reach 7 ft. (2 m) or 14 ft. (4 m). A side-to-side hinge has a unique spring controlled lock to hold the arm in place for steady positioning. Each crane includes support boom, mounting plate, 8 in. (203 mm) tubing, flexible hose, and mounting brackets.  
**Order**  
K1671-1 for EC 7 ft.  
K1671-2 for EC 14 ft.



**Arc Sensor/Lamp Kit**  
Mounted in the lamp housing, the arc sensor turns the fan on when sensing the arc flash, and turns off 50 seconds after the arc ends. Hood mounted switches turn the unit on and off independently of the arc sensor. Kit includes lamp housing with arc sensor, control box, interconnect wire, hood mounted lamp/fan switch and instruction manual.  
**Order**  
K1669-4 for Prism 2400 Stationary Fan  
K1669-10 for Prism 4200 Stationary Fan

**PRODUCT SPECIFICATIONS PRISM WALL MOUNT ARMS**

Product Name	Product Number	Arm Length ft (m)	Nominal Arm Diameter in (mm)	Extraction Capacity Range CFM (M <sup>3</sup> /H)	Weight lb (kg)
PRISM Wall Mount Telescopic 4-6 ft Counter-weight	K1655-15	Retracts from 4.1 - 6 (1.25 - 1.8)	8 (203.2)	350-940 (600-1600) <sup>[1]</sup>	57 (25.8)
Prism Wall Mount Telescopic 5-8 ft Counter-Weight	K1655-14	Retracts from 5-8.2 (1.5-2.5)			59.5 (27)
Prism Wall Mount Flexible 10 ft*	K1655-8	10 (3.1)			33 (15)
Prism Wall Mount Flexible 13 ft*	K1655-9	13 (4.1)			37 (16.7)

\*All Prism Wall Mount Arms come with wall mounting bracket and hardware  
 \*Only Flexible Prism Wall Mount Arms can be used with optional Extension Crane

**PRODUCT SPECIFICATIONS PRISM MOBILE ARMS**

Product Name	Product Number	Arm Length ft (m)	Nominal Arm Diameter in (mm)	Extraction Capacity Range CFM (M <sup>3</sup> /H)	Weight lb (kg)
Prism Mobile 10 ft	K2633-5	10 (3.1)	8 (203.2)	350-940 (600-1600) <sup>[1]</sup>	33 (15)
Prism Mobile 10 ft with arc sensor/lamp kit	K2633-6				34 (15.4)
Prism Mobile 13 ft	K2633-7	13 (4.1)			37 (16.7)
Prism Mobile 13 ft with arc sensor/lamp kit	K2633-8				38 (17)

[1] Depends on equipment and filter type

The operation of welding fume control equipment is affected by various factors including proper use and positioning of the equipment, maintenance of the equipment and the specific welding procedure and application involved. Worker exposure level should be checked upon installation and periodically thereafter to be certain it is within applicable OSHA PEL and ACGIH TLV limits.

**Lincoln Electric Product Claim** - Weld fume control products manufactured by The Lincoln Electric Company are designed to be utilized as an engineering safety control to aide in achieving adequate ventilation while conducting welding or it's allied processes. The operation of welding fume control equipment is affected by various factors including proper use and positioning of the equipment, and the specific welding procedure and application involved. When the equipment is used as designed - and when properly installed, operated and maintained - it can be a valuable and effective tool to help employers maintain adequate ventilation in the workplace. Lincoln Electric defines adequate ventilation as that which is required to maintain occupational exposure levels below the applicable exposure limits when sound work practices are utilized. Worker exposure level should be checked upon installation and periodically thereafter to be certain it is within applicable OSHA PEL and ACGIH TLV limits.

**CUSTOMER ASSISTANCE POLICY**

The business of Lincoln Electric is manufacturing and selling high quality welding equipment, automated welding systems, consumables, and cutting equipment. Our challenge is to meet the needs of our customers, who are experts in their fields, and to exceed their expectations. On occasion, purchasers may ask Lincoln Electric for information or technical information about their use of our products. Our employees respond to inquiries to the best of their ability based on information and specifications provided to them by the customers and the knowledge they may have concerning the application. Our employees, however, are not in a position to verify the information provided or to evaluate the engineering requirements for the particular weldment, or to provide engineering advice in relation to a specific situation. Accordingly, Lincoln Electric does not warrant or guarantee or assume any liability with respect to such information or communications. Moreover, the provision of such information or technical information does not create, expand, or alter any warranty on our products. Any express or implied warranty that might arise from the information or technical information, including any implied warranty of merchantability or any warranty of fitness for any customers' particular purpose or any other equivalent or similar warranty is specifically disclaimed. Lincoln Electric is a responsive manufacturer, but the definition of specifications, and the selection and use of specific products sold by Lincoln Electric is solely within the control of, and remains the sole responsibility of the customer. Many variables beyond the control of Lincoln Electric affect the results obtained in applying these types of fabrication methods and service requirements.