



PROCESS PIPE FIELD WELDING WITH ACTIV8X™ PIPE CE



Field welding in the Process Pipe industry can be challenging. Contractors face outdoor elements, difficult welding positions, safety concerns, power-to-arc logistics, welding code requirements and scheduling deadlines. To be successful, contractors must employ welding solutions that are favorable for improving productivity, reducing repair rates and offering ease of portability. The welding solution must be suited for a variety of welding processes, a range of different materials and provide good mobility to reach all areas of the job site.



INCREASE DIAMETER INCHES/DAY

- » STT® Field root pass up to 4X+ faster than GTAW in root pass productivity
- » Total time (STT® Field + GMAW-P Hot, Fill, Cap) 2X+ Faster than GTAW



REDUCE HEAT INPUT

- » STT® Field root lowers heat input 25% compared to GTAW root



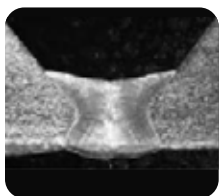
PROCESS FLEXIBILITY

- » Full range of welding processes including: STT® Field, SMAW, GTAW, GMAW, FCAW-G, GMAW-P, MCAW-P



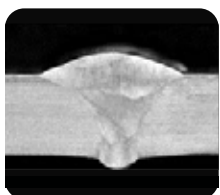
QUALIFIED TO ASME SEC. IX B31.1 AND B31.3

STT® Field is a new field welding technology that offers the ultimate in portability along with the benefits of the proven legacy STT performance for pipe root welding. Keep your projects on time with the Activ8X Pipe and STT® Field.



STT® FIELD ROOT PASS

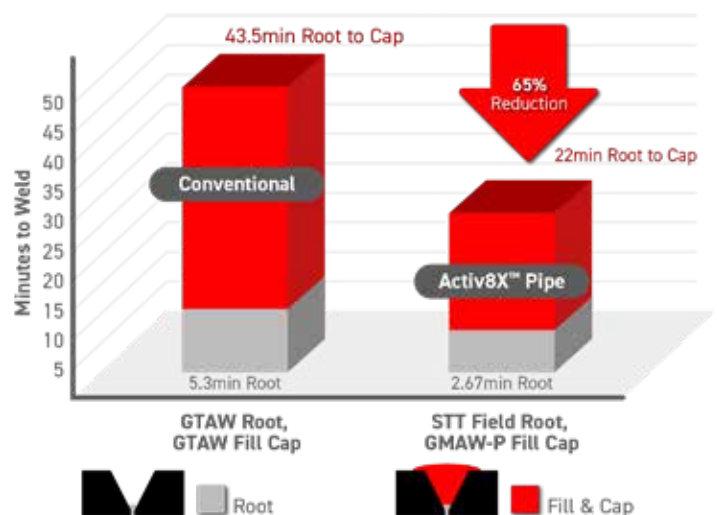
- » STT® Field mode
- » No backing gas (SS Pipe)
- » No control cable or sense lead



HOT, FILL & CAP PASSES

- » Use GMAW-P or FCAW-G for carbon steel, stainless steel and chrome moly (CrMo) steel
- » System includes traditional welding processes like SMAW and GTAW

Reduce Weld Time (6" SCH 40 304L)



KEY SOLUTION ATTRIBUTES

- ✓ Improve Safety - no back purge
- ✓ Non Helium Gas – SS shielding gas 98Ar/2CO₂ recommended
- ✓ CS, SS, and CrMo Applications
- ✓ STT® Field controls heat input for root welding without backing gas on SS
- ✓ Low Hydrogen Process
- ✓ ASTM G48 corrosion testing results meet typical industry requirements
- ✓ 35% reduction in weight as compared to a shop system

SOLUTION SETUP



SOLUTION COMPONENTS



Activ8X™ Pipe CE

For the ultimate in job site portability

- » CrossLinc™ technology allows across-the-arc welding (no control cable required)
- » STT® Field and Pulse Waveform outputs generated at the feeder
- » Compact and lightweight design
- » Accommodates 8" diameter spools of wire



Supramig® & LNM Austenitic Stainless Steel wires

Industry-leading MIG consumables

- » Consistent and reliable wire feeding through surface treatment of the welding wire
- » Tight chemistry control to ensure specifications are met
- » Lot certification for peace of mind in critical applications



Flextec® 350XP CE

For optimal "across-the-arc" welding output from any input power

- » Use input power from 200 to 575V, single phase or three phase, 50 or 60 Hz
- » Multi Process welder: MIG, TIG, Stick, Flux-cored and Carbon arc gouging
- » Feeder flexibility: CrossLinc™ and shop bench feeders
- » Built for rugged environments