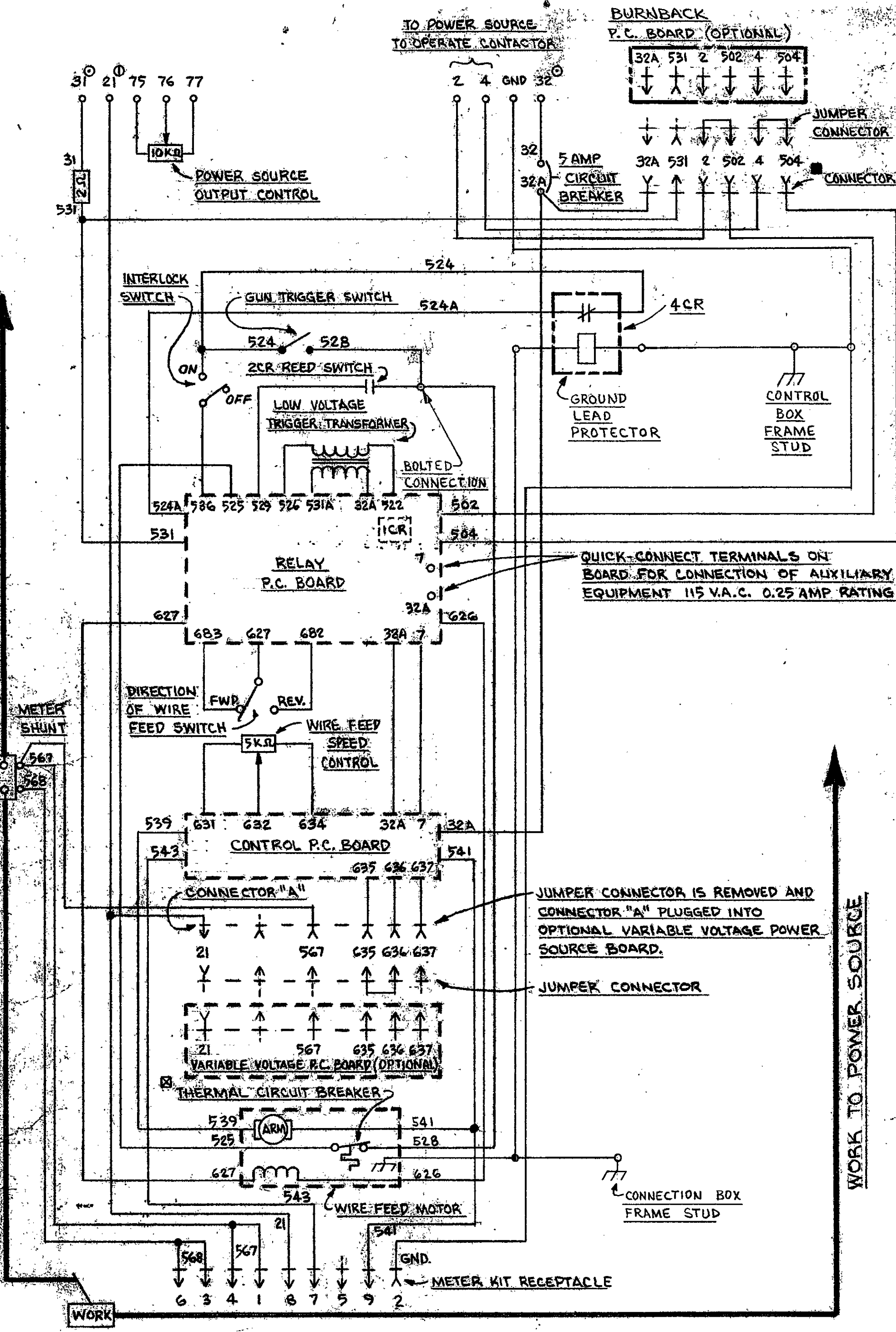


ELECTRODE TO POWER SOURCE



QUICK-CONNECT TERMINALS ON BOARD FOR CONNECTION OF AUXILIARY EQUIPMENT 115 V.A.C. 0.25 AMP RATING

JUMPER CONNECTOR IS REMOVED AND CONNECTOR "A" PLUGGED INTO OPTIONAL VARIABLE VOLTAGE POWER SOURCE BOARD.

JUMPER CONNECTOR

WORK TO POWER SOURCE

- 115 V.A.C. (31 AND 32)
- ⓪ TO POWER SOURCE WORK TERMINAL
- JUMPER CONNECTOR IS REMOVED AND CONNECTOR "B" IS PLUGGED INTO OPTIONAL BURNBACK P.C. BOARD.
- ⊠ ACTUATED BY MOTOR TEMPERATURE

A.N.S.I. ELECTRICAL SYMBOLS PER E-1532.

UNLESS OTHERWISE SPECIFIED TOLERANCE:  
 ON HOLE SIZES PER E-2046  
 ON 2 PLACE DECIMALS IS ± .02  
 ON 3 PLACE DECIMALS IS ± .002  
 ON ALL ANGLES IS 1/8" OF ANGLE  
 MATERIALS SPECIFICATIONS AND FINISHES  
 WITHIN THESE DRAWINGS

CLASS. SH. NO.	7-4-73
DATE	2-28-77
BY	
CHECKED	
APPROVED	

THE LINCOLN ELECTRIC CO.  
 CLEVELAND, OHIO U.S.A.

Equip. No. LN-8F  
 CONNECTION SCHEMATIC  
 M-13407