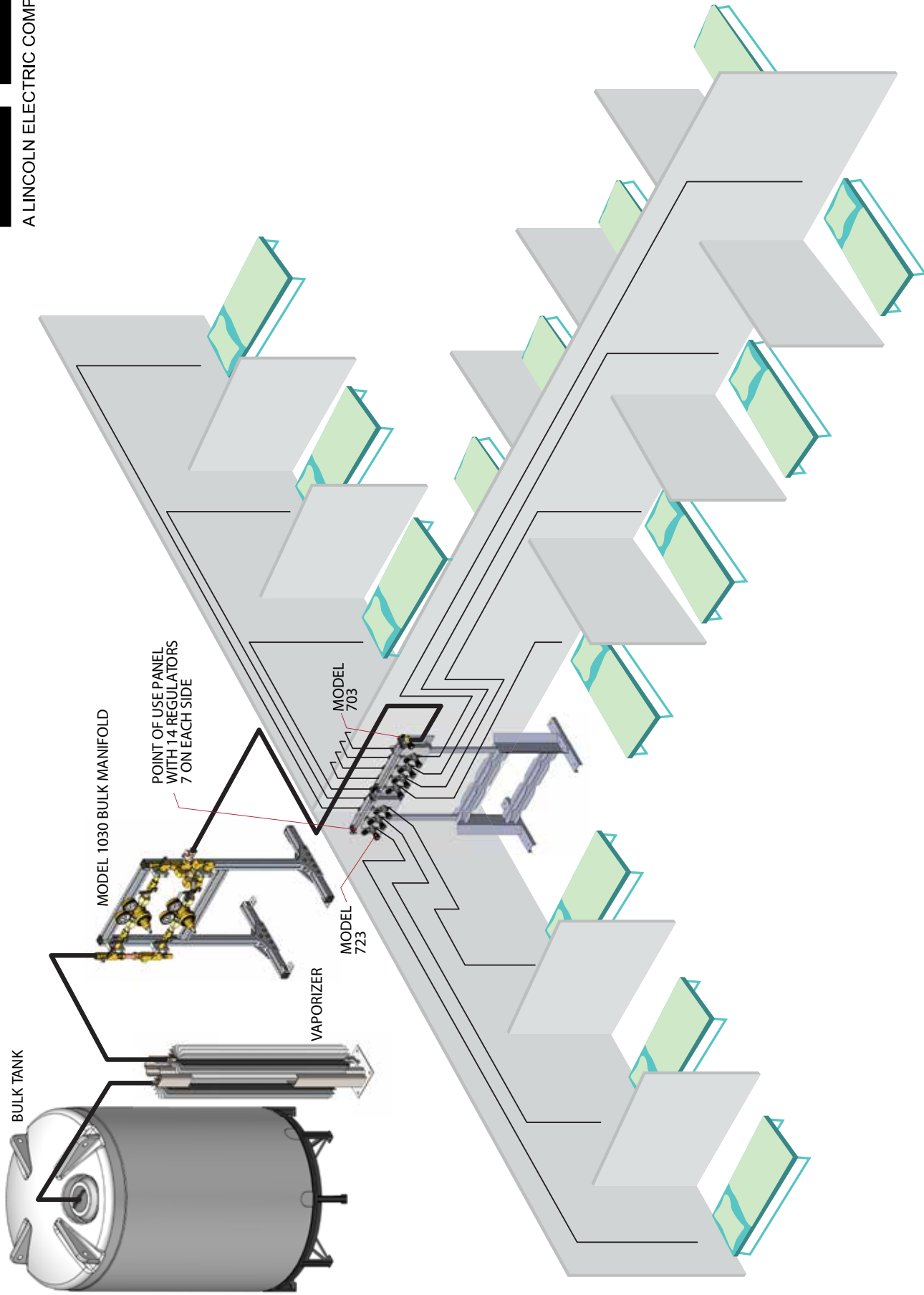


HARRIS OXYGEN EQUIPMENT



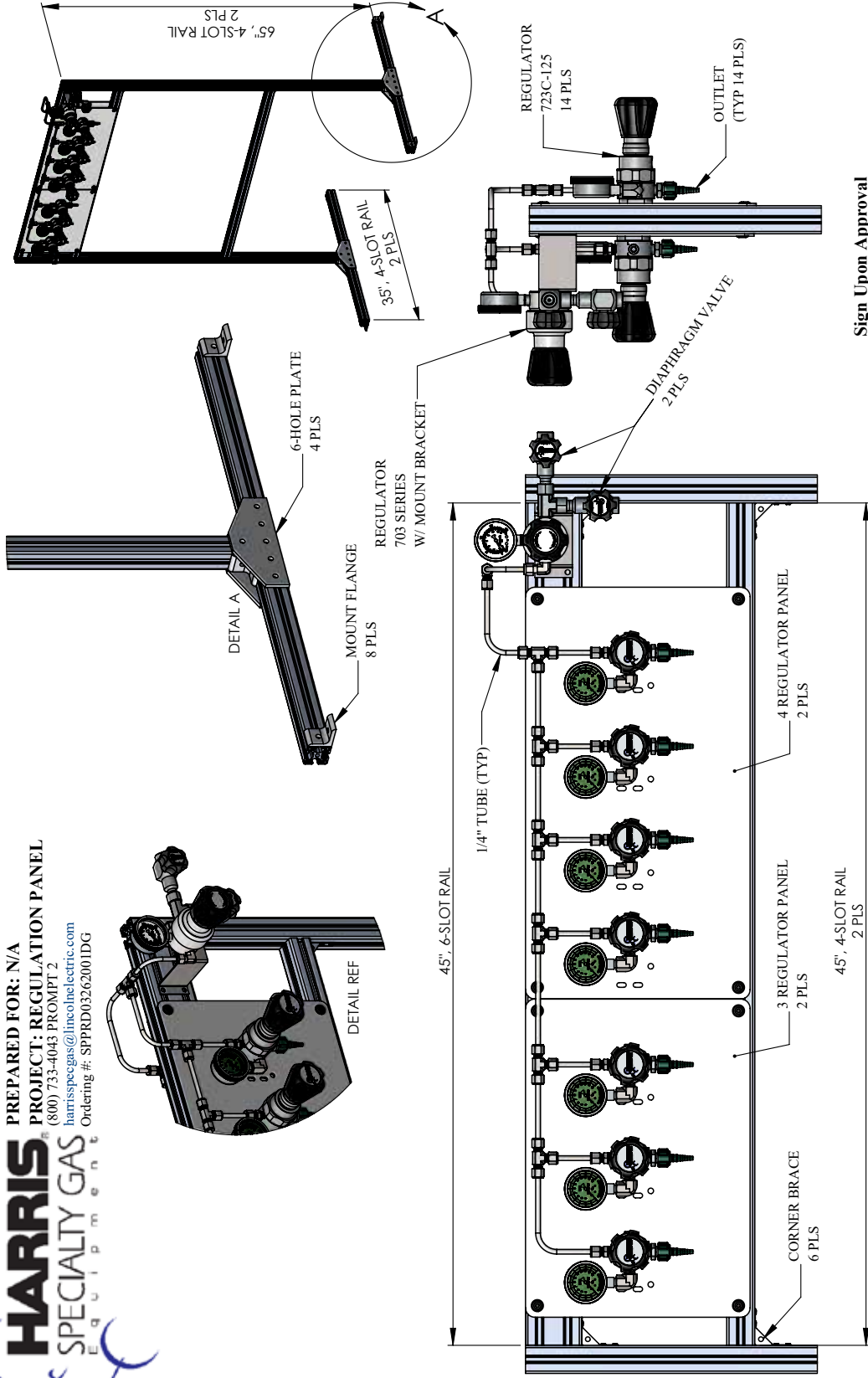
A LINCOLN ELECTRIC COMPANY



LOW PRESSURE OXYGEN PANEL



PREPARED FOR: N/A
 PROJECT: REGULATION PANEL
 (800) 733-4043 PROMPT 2
 harrisspecialtygas@lincolnelectric.com
 Ordering #: SPPRD03262001DG



Sign Upon Approval

Customer: _____ P.O.# _____
 Approved By: _____ Date Approved: _____

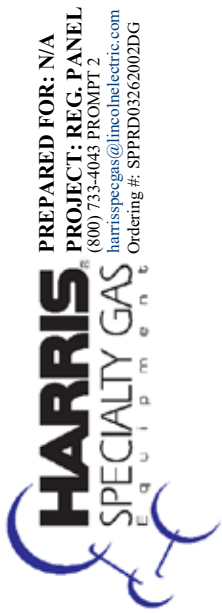
Date Created: 03/30/20
 Revision Date: 04/01/20 Rev: 2

©Copyright 2020, The Harris Product Group. The drawings above, and copyrights thereto, are the sole property of The Harris Products Group. Any reproduction, distribution, derivative works or creation of parts based thereon without the express written consent of The Harris Products Group is expressly prohibited.

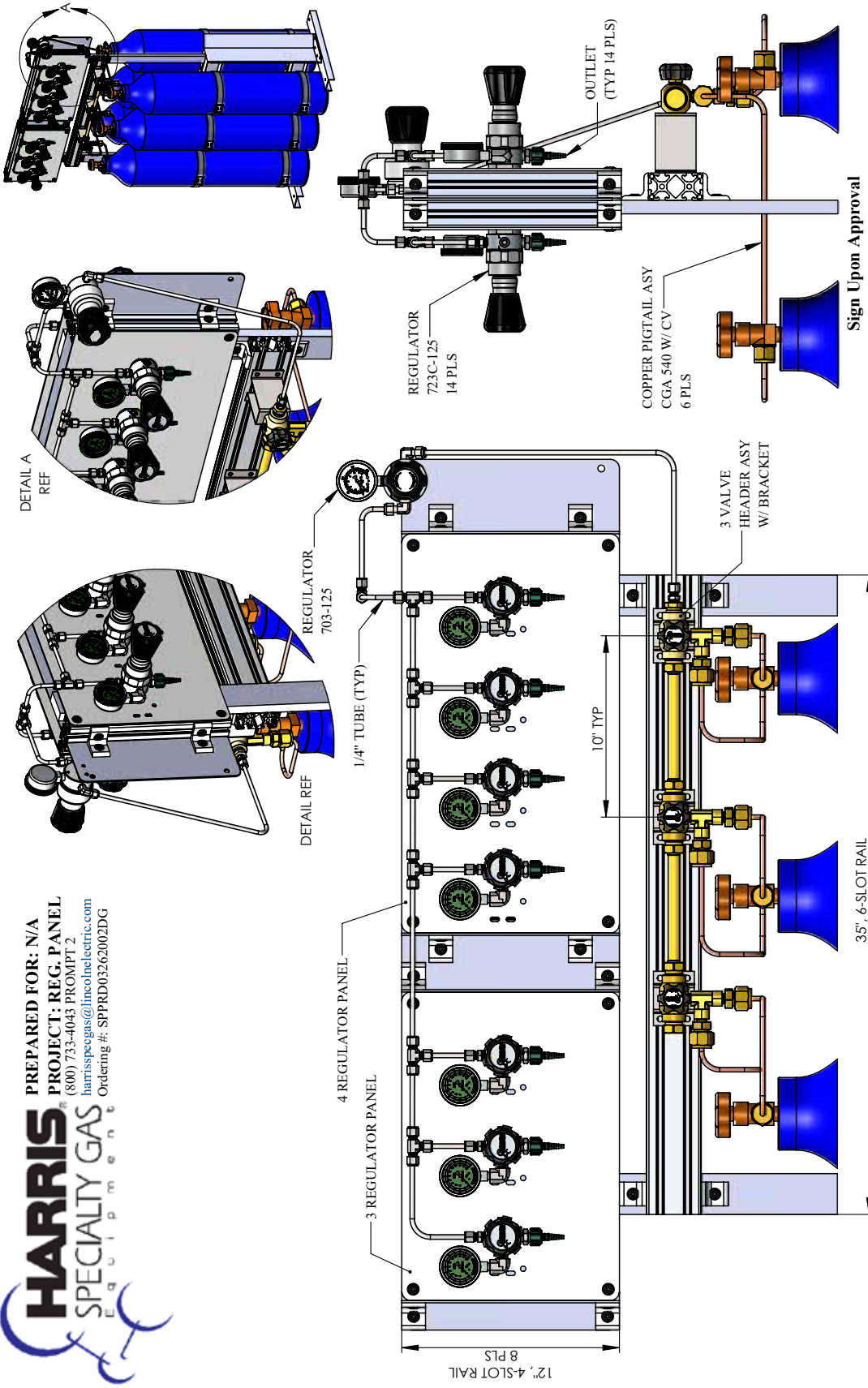
- NOTES:
- 1) FDA REGISTRATION ON REGULATORS ARE PENDING
 - 2) THIS PORTABLE, POINT OF USE PANEL IS OUTSIDE THE SCOPE OF NFPA-99

Please fax or email back upon approval, or mark up specific changes and resubmit.
 Fax to (800) 841-3738

HIGH PRESSURE OXYGEN PANEL



PREPARED FOR: N/A
 PROJECT: REG. PANEL
 (800) 733-4043 PROMPT 2
 harrisspecialtygas@lincolnelectric.com
 Ordering #: SPPRD03262002DG



Customer: _____ P.O.# _____

Approved By: _____ Date Approved: _____

Date Created: 03/30/20 Revision Date: 04/01/20 Rev: 2

1) FDA REGISTRATION ON REGULATORS ARE PENDING

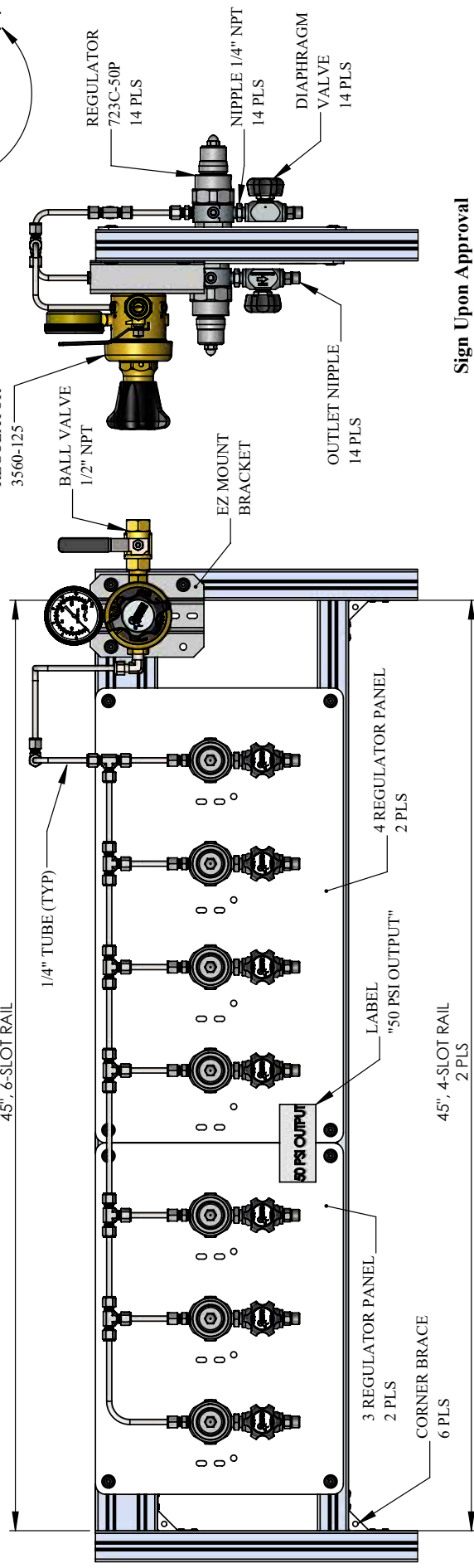
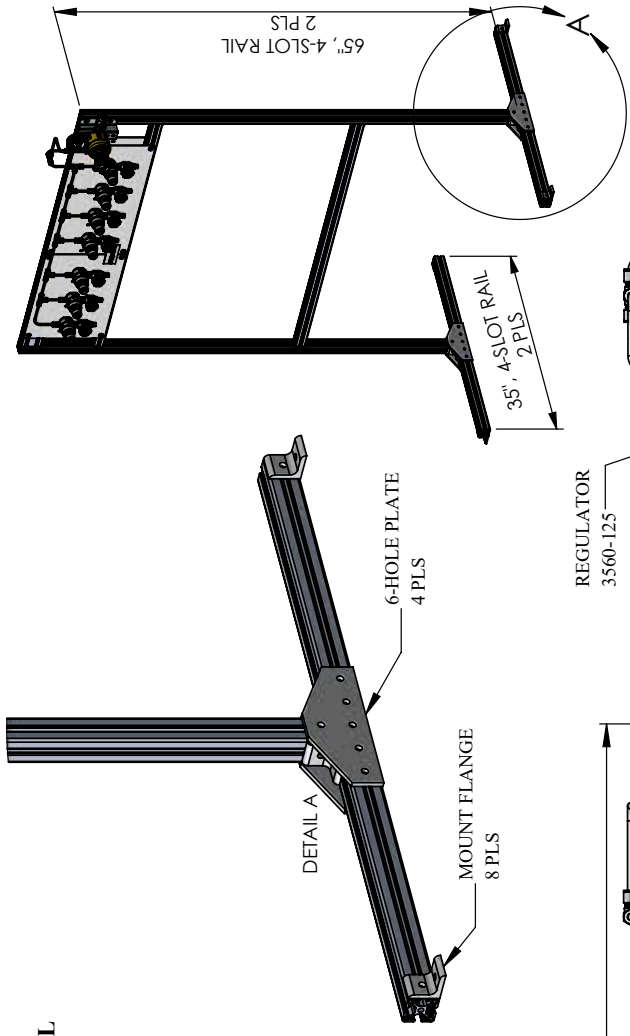
2) THIS PORTABLE, POINT OF USE PANEL IS OUTSIDE THE SCOPE OF NFPA-99

Please fax or email back upon approval, or mark up specific changes and resubmit. Fax to (800) 841-3738

©Copyright 2020, The Harris Product Group. The drawings above, and copyrights thereto, are the sole property of The Harris Products Group. Any reproduction, distribution, derivative works or creation of parts based thereon without the express written consent of The Harris Products Group is expressly prohibited.



PREPARED FOR: N/A
 PROJECT: PRESET REGULATION PANEL
 (800) 733-4043 PROMPT 2
 harrispec-gas@lincolnelectric.com
 Ordering #: SPPRD03262003DG



Sign Upon Approval

Customer: _____ P.O.# _____
 Approved By: _____ Date Approved: _____

Date Created: 04/01/20
 Revision Date: 04/05/20 Rev: 2

"Copyright 2020. The Harris Product Group. The drawings above, and copyrights thereto, are the sole property of The Harris Products Group. Any reproduction, distribution, derivative works or creation of parts based thereon without the express written consent of The Harris Products Group is expressly prohibited."

ADDITIONAL INFO/ SPECS:
 • 723 REGULATORS PRESET TO 50 PSI

Please fax or email back upon approval, or mark up specific changes and resubmit. Fax to (800) 841-3738

1030 MANIFOLD

BULK & MICRO BULK DUAL REGULATOR MANIFOLD



The Model 1030 is a high flow gas supply manifold intended to be attached downstream of a bulk gas system/vaporizer and which will regulate the pressure and flow of gas into facility pipelines. The manifold utilizes the Harris Model 3550-250 regulators with stainless steel diaphragms. Flow rates up to 10,000 scfh can be achieved at the nominal inlet pressure of 350 psi. The system has a 450 psi maximum rated inlet pressure.

FEATURES

- Primary pressure control from bulk systems
- High flows up to 10,000 scfh at 350 psi inlet
- Quarter turn valves to indicate open and close
- Standard model delivers 0-250 psi (custom pressures available)
- Max inlet pressure of 450 psig
- Stainless steel diaphragms
- Multiple pressure relief valves for safety
- Designed to meet NPFA[®]99
- Dual regulator set-up for redundancy
- Rack to support the manifold system
- Ready to install out of the box with mounting station

RECOMMENDED ACCESSORIES

- P/N: 4000957 (Model 3550-250)
High flow regulator for secondary gas control inside a facility or point-of-use



1030 ORDERING INFORMATION

PART NO.	MODEL NO.	MAXIMUM INLET PRESSURE	MAXIMUM FLOW RATE (scfh)	GAS SERVICE	DELIVERY RANGE	INLET/OUTLET FITTING
4705300	1030 - 250 w/ Frame	450 PSI	10,000	N ₂ , O ₂ , Ar, CO ₂	40 - 250 PSI	1/2" NPT
4705200	1030 - 250 w/o Frame	450 PSI	10,000	N ₂ , O ₂ , Ar, CO ₂	40 - 250 PSI	1/2" NPT

MODEL 301

SMALL METERING REGULATOR



The Harris Model 301 regulators are compact single-stage metering regulators ideally suited for oxygen therapy applications using small cylinders or where space and weight limitations are important.

The design of this regulator has made it a popular choice for home care, ambulance, hospital transport or doctor/dentist offices.

FEATURES

- Sintered bronze filters in the inlet port and outlet fitting.
- Captive adjusting knob.
- Internal relief system to guard against over-pressurization.

MODEL 301 ORDERING INFORMATION

GAS	PART NO.	MODEL NO.	FLOW RANGE	INLET	GAUGE SIZE
Oxygen	3500603*	301-OX15M-870	0-15 LPM	CGA-870 (yoke)	2"
Oxygen	3500619*	301-OX15L-540	0-15 LPM	CGA-540	2"
Oxygen	3500607	301-OX 8M-870	0-8 LPM	CGA-870 (yoke)	2"
Oxygen	3500613	301-OX 5L-540	0-5 LPM	CGA-540	2"
Oxygen	3500612	301-OX 5M-870	0-5 LPM	CGA-870 (yoke)	2"
Nitrous Oxide	3500604	301-N2O-15M-910	0-15 LPM	CGA-910 (yoke)	2"

Email: harrisspecgas@lincolnelectric.com
 Orders and Tech Service: 1.800.733.4043
 Option 2

THE HARRIS PRODUCTS GROUP
 A Lincoln Electric Company
 2345 Murphy Blvd.
 Gainesville, GA 30504



MODEL 25

LARGE PRESET AND METERING REGULATOR



This single-stage preset regulator is recommended for applications using large cylinders, piping systems or other applications that require a constant pressure. The regulator is preset to deliver 50 PSIG and has an external relief valve set at 75 psi.

FEATURES

- Color coded 2" flow gauge engineered to ANSI
- B-40.1 specifications.
- Sintered bronze filters in the inlet port and outlet port.
- Large diaphragm for accurate delivery.
- Captive inlet nut to protect the seat.

MODEL 25P ORDERING INFORMATION

GAS	PART NO.	MODEL NO. INLET	OUTLET	GAUGE SIZE
Oxygen	3500625*	25C-2T50P-540	CGA-540 9/16-18-RH	2"
Nitrous Oxide	3500626*	25C-2T50P-326	CGA-326 DISS 1040	2"
Carbon Dioxide	3500627	25C-2T50P-320	CGA-320 DISS 1080	2"
Air	3500628	25C-2T50P-346	CGA-346 DISS 1160	2"



The Model 25 is designed for extended trouble free service, features a large diaphragm that maintains an accurate flow rate from full cylinder to empty.

FEATURES

- Captive inlet nut to protect the seat.
- An internal relief system to guard against
- Color coded pressure gauge engineered to ANSI B-40.1 specifications..

MODEL 25 ORDERING INFORMATION

GAS	PART NO.	MODEL NO.	DELIVERY RANGE	INLET	GAUGE SIZE
Oxygen	3500600	25-3 OX15M-870	0-15 LPM	CGA-870 (yoke)	2"
Oxygen	3500601	25-3 OX15M-540	0-15 LPM	CGA-540	2"
N2O	3500637	25-3C-100-326	0-100 PSI	CGA-326	2"
Oxygen	3500638	25-3C-100-540	0-100 PSI	CGA-540	2"
CO2/Oxygen (CO2 not over 7.5%)	3500602	25-3 OX15M-280	0-15 LPM	CGA-280	2"
N2O/Oxygen (N2O 47.5%-52.5%)	3500602	25-3 OX15M-280	0-15 LPM	CGA-280	2"

Orders: 1.800.733.4043

THE HARRIS PRODUCTS GROUP
www.harrisproductsgroup.com



