

LINC-CUT™ 3015



# LINC-CUT™ 3015

YOUR NEXT BIG UPGRADE.  
LASER CNC CUTTING SYSTEM

# WHAT IS THE CHALLENGE?

It's not only expensive to hand-cut or outsource hundreds of parts, but relying on inferior processes or third party vendors to deliver high quality parts in a timely manner, is inefficient and time consuming.

Steel fabricators are facing several challenges globally, including fluctuating steel prices due to trade tensions and changes in demand, labor shortages, stricter environmental regulations, competition from alternative materials, and the need to invest in new equipment and training to keep up with technological advancements.



TIME/COST  
INTENSIVE



LABOR  
SHORTAGES

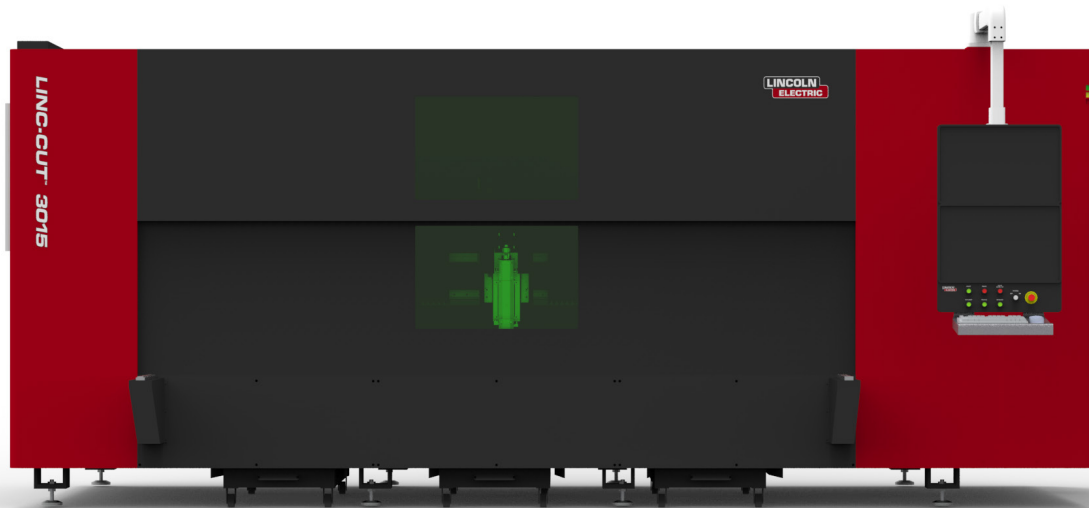


QUALITY  
CONTROL



HEALTH AND  
SAFETY RISKS

**BEFORE:** Outsourcing parts or cutting by hand can be time-consuming and cost-intensive.



# THE LINC-CUT SOLUTION

The LINC-CUT™ CNC laser cutting system was developed to offer exceptional and repeatable cut quality for sheet metal fabrication needs, and do so more safely and cost effectively.

**They say: Quality over Quantity. We asked: Why not both?** With motion speeds up to 2,874 inches per minute (73m/min) and laser output up to 4 kilowatt, the Linc-Cut system can production cut up to 5/8 inch carbon steel quickly, easily and with no compromise to quality.



SAVE  
VALUABLE TIME



MAKE IT  
A ONE-PERSON-JOB



REDUCE  
INCONSISTENCIES



IMPROVE  
SAFETY STANDARDS

**AFTER:** Meet quality expectations on every part, reduce lead times and save costs. Small machine footprint with unitized side-load drawer system

**LINC-CUT™**

# CNC FIBER LASER CUTTING

Introducing the Lincoln Electric Linc-Cut CNC Fiber Laser cutting system. This unitized fiber laser cutting cell offers you exceptional cut quality for your sheet metal fabrication needs, safely and cost effectively. With a reduced floor space requirement over standard “shuttle” exchange tables, and an emphasis on ease of setup and operation, you too can be quickly installed and in operation producing parts. The fully enclosed cell is emission light safe from the infrared light of the laser cutting process, and captures the particulate matter with a smaller, more effective air filtration system.



**CONTROL**  
CUT QUALITY



**EASY PART**  
FILE IMPORT



**MATERIAL**  
OPTIMIZATION



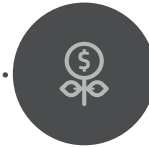
**OPERATOR**  
TRAINING SYSTEM



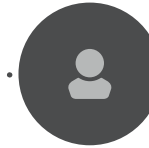
**REDUCE ERRORS**



**INTUITIVE OPERATION**



**ECONOMIC**  
INVESTMENT



**ONLY ONE**  
OPERATOR NEEDED



**INCREASED PRODUCTION**  
CAPABILITIES



**AUTOMATED**  
CUTTING



**INTELLIGENT**  
SOFTWARE



**UPGRADEABLE**  
SOFTWARE



## ROLL-OUT MATERIAL DRAWER



CAN I HAVE A LOOK AT THE LINC-CUT CNC LASER CUTTING SYSTEM IN LIVE ACTION? **YES**

**See for yourself on-site!** Get in touch with our sales team to schedule a live demo near you. Alternatively, watch the system overview here: [Linc-Cut Overview Video](#)

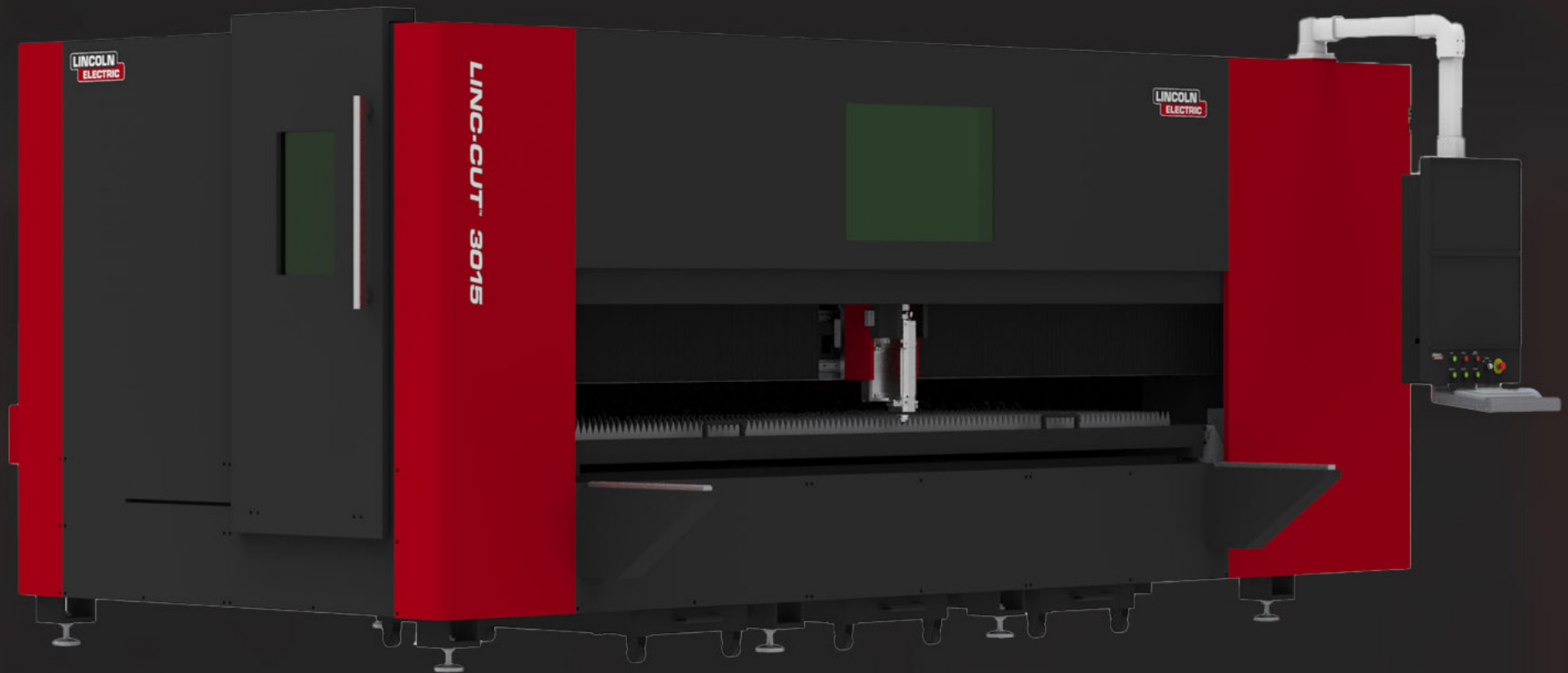


125+ YEARS OF EXPERIENCE & INNOVATING  
WITHIN THE INDUSTRY

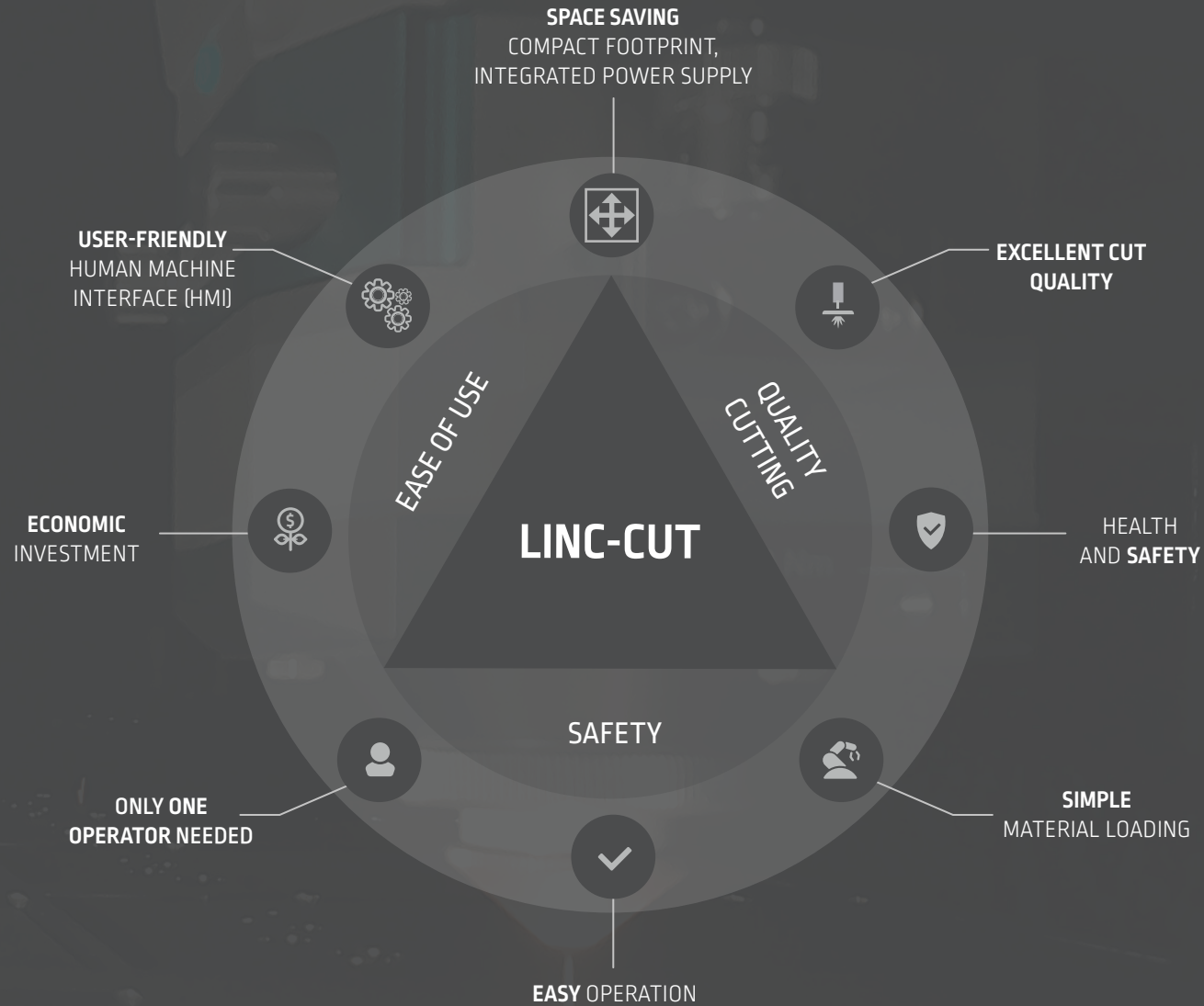
**LINC-CUT™**

# ENGINEERED FOR **EVERYONE.**

Our LINC-CUT systems offer high quality and consistent cuts for all sizes of companies that need to cut metal plate across the globe.



# LINC-CUT VALUES.



# INTELLIGENT SOFTWARE



## POWERFUL CONTROLS | ROBUST DESIGN

eCUT HMI and cncCUT software combine to give your operator full control of material handling, job processing, reporting & machine maintenance.

Organize jobs and optimize resources using a detailed operation display.



## DIRECT IMPORT OF FILES

Access DXF files. *More file types coming soon*

# 1

### FEATURE RICH ABILITIES

Precise & fast. Software that enables operators to add holes & hole patterns, nest parts, fly cutting, add shapes and laser pierce and kerf optimization.

# 2

### CONTINUOUS EVOLUTIUON

Stay up-to-date with software upgrades that give you access to the latest technology and innovation.

# 3

### OPERATOR TRAINING

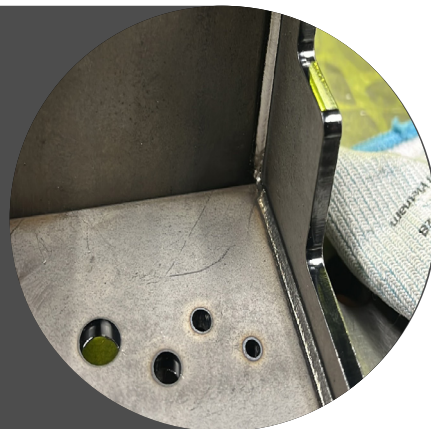
24/7 access to our on-line training platform - hours of training, large video library - unlimited tools and resources for your operators.

## LASER PIERCE & KERF OPTIMIZATION

LEAD-INS

KERF COMPENSATION

TABBING OF SMALL PARTS



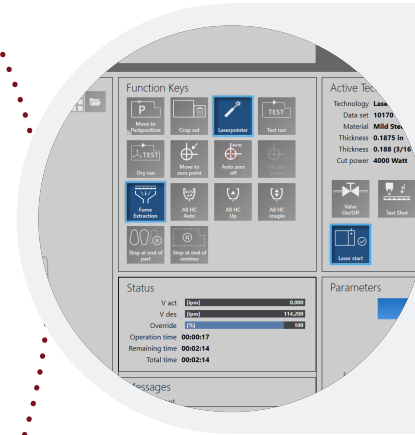


# eCUT DUAL SCREEN HMI



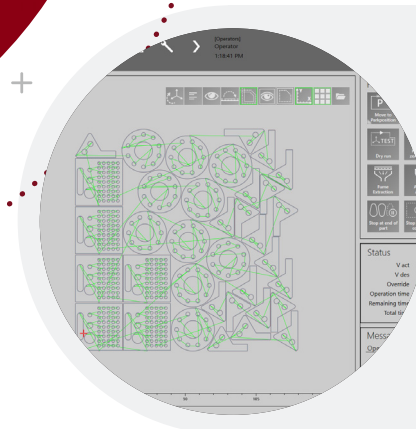
## INTEGRATED CAM PACKAGE

This motion controller allows the operator to design and nest parts on the fly at the machine, either replacing an external CAM solution or by providing additional value to the system.



## MACHINE CONTROL

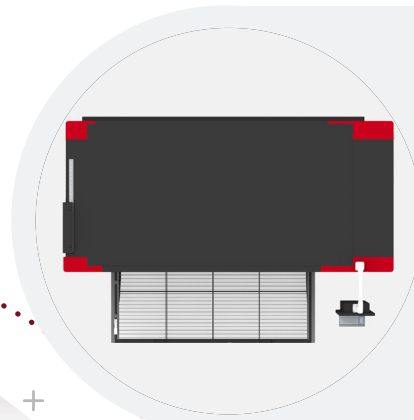
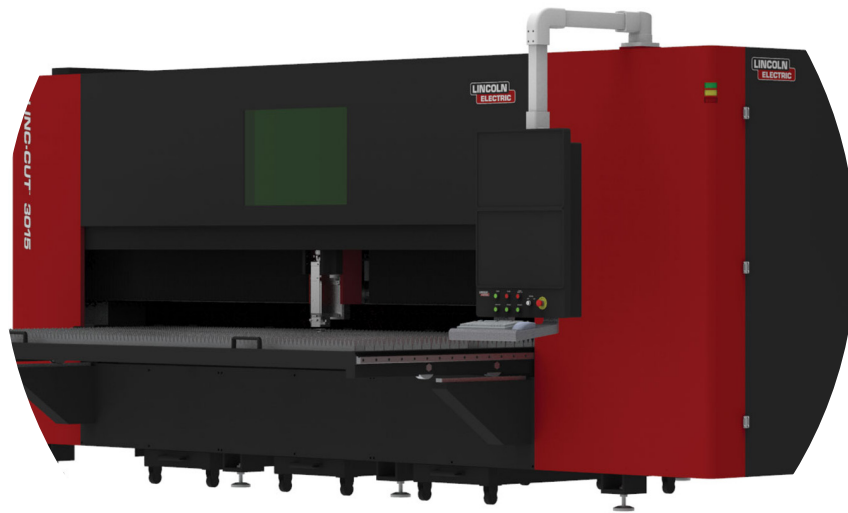
Organize jobs and optimize resources using a detailed operation display.



## PART OPTIMIZATION

Material optimization through nesting means less scrap material, saving your business' time & money.

# KEY FEATURES



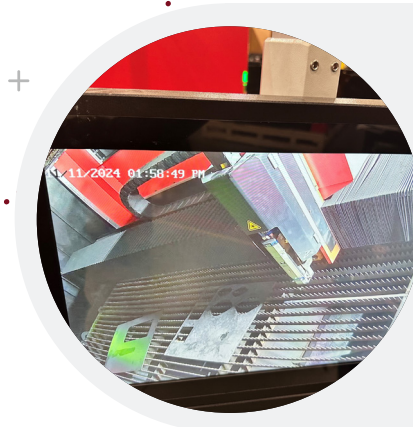
## ROLL-OUT DRAWER

With a capacity for 5'x10' sheets, the roll-out drawer allows the use of a forklift or overhead material loading option when feeding material.



## DUST COLLECTOR

The Prism<sup>®</sup> 2 fume extraction solution helps deliver less noise, lower costs, maximum results and helps improve workplace safety.



## INTERNAL CAMERA

Internal camera system allows the operator to view and monitor the cutting process from the operator station.

# PRISM 2 AIR FILTRATION SYSTEM

The Prism® 2 welding and cutting fume extraction system from Lincoln Electric uses intelligent fan control technology, maximizes fume extraction, conserves energy and extends equipment life.

## QUIET OPERATION

Silencer and sound deadening materials drastically reduce airflow noise. Equipped with a variable speed drive that adjusts extraction airflow to application.

## ADDED SAFETY

Integrated spark arrestor and optional Prism Thermal Suppression System.

## COMPACT SIZE

Can be placed directly next to a cutting table or robotic cell, reduced height for areas with space constraints.

## SIMPLE MAINTENANCE

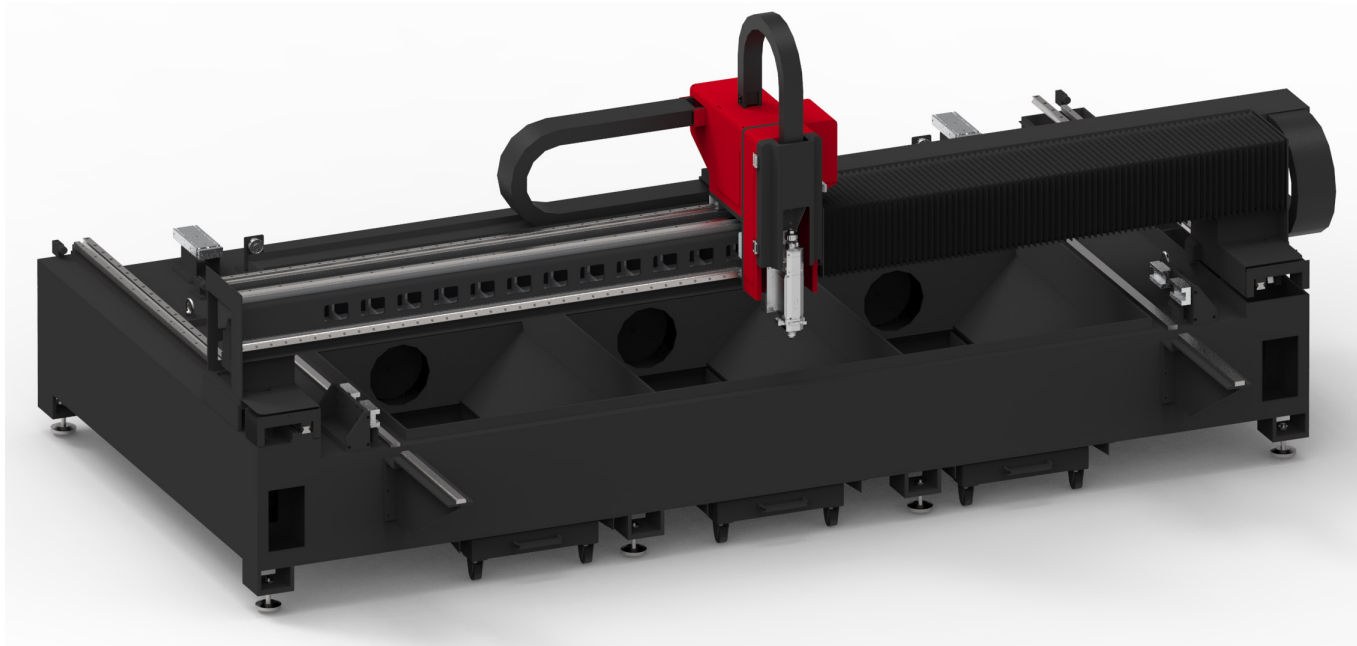
Automatic cleaning process once pre-set pressure differential is reached. Particulate is collected into the 20-gallon dust bin.

## EASY INSTALLATION

Crane-less assembly for quick and seamless wire connectivity to the system. Connect power, compressed air, and duct sensor for fan speed control.



# BUILT TO BE EXCELLENT



## ACCELERATED CUTTING APPROACH

The heavy-duty machine frame and reinforced fabricated steel gantry allows for high acceleration and deceleration rates to complement the Fiber Laser cutting process at higher speeds.



## BUILT TO LAST

All motion components are contained under bellows to protect them from the dust and debris of the cutting process.



## DESIGNED FOR DURABILITY

Heavy-duty 35mm linear rails and helical gear rack are force lubricated in order to provide a long service life.



## OPERATOR-CENTRIC FEATURES

Soft close and eject pneumatic stages give the operator consistent and smooth operation of the roll-out drawer, even at maximum capacity.



## DESIGN WITH SAFETY IN MIND

1. Light-Safe panel junctions, sheet metal junctions and safety interlocked doors
2. Properly rated process-viewing windows rated for ANSI Z136 & EN207 standards of optical laser emission human protection
3. Safety rated door switches, PLD safety performance, hard stops and system is securable to the floor

# LINC-CUT SERVICE & SUPPORT.

With every purchased Linc-Cut machine, you get the peace of mind that our expert technicians are available to support your operations.



## WE PROVIDE FULL SUPPORT IN **NORTH AMERICA**

- ✓ Monday-Friday phone support
- ✓ Fully trained field service engineers
- ✓ Fast spare parts fulfillment
- ✓ Online courses and trainings

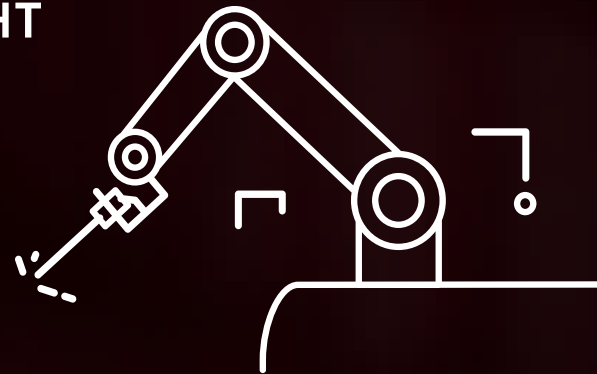
# JOIN THE INNOVATIVE WORLD OF LINCOLN ELECTRIC AUTOMATION!

Custom state-of-the-art tailored solutions set us apart from the rest.

WE COLLABORATE WITH OUR  
CUSTOMERS TO DEFINE **THE RIGHT  
SYSTEM FOR THEIR NEEDS.**

We pay attention to:

- ✓ Given surroundings and onsite conditions
- ✓ Your future expansion plans
- ✓ Process implementation



# TAKE CNC CUTTING TO THE NEXT LEVEL.



Publication LEA-093024HR1-01

© Lincoln Global Inc. All Rights Reserved  
<https://www.lincolnelectric.com/automation>

All trademarks and registered trademarks are the property of their respective owners.

The Lincoln Electric Company  
22801 Saint Claire Avenue  
Cleveland OH 44117-1199 USA

