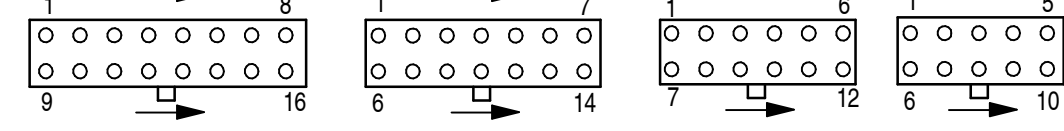


POWER MIG 262MP MACHINE SCHEMATIC G10761 REV: A

LEAD COLOR CODE:
 B=BLACK OR GRAY
 R=RED OR PINK
 W=WHITE
 G=GREEN (W/YELLOW STRIPE)



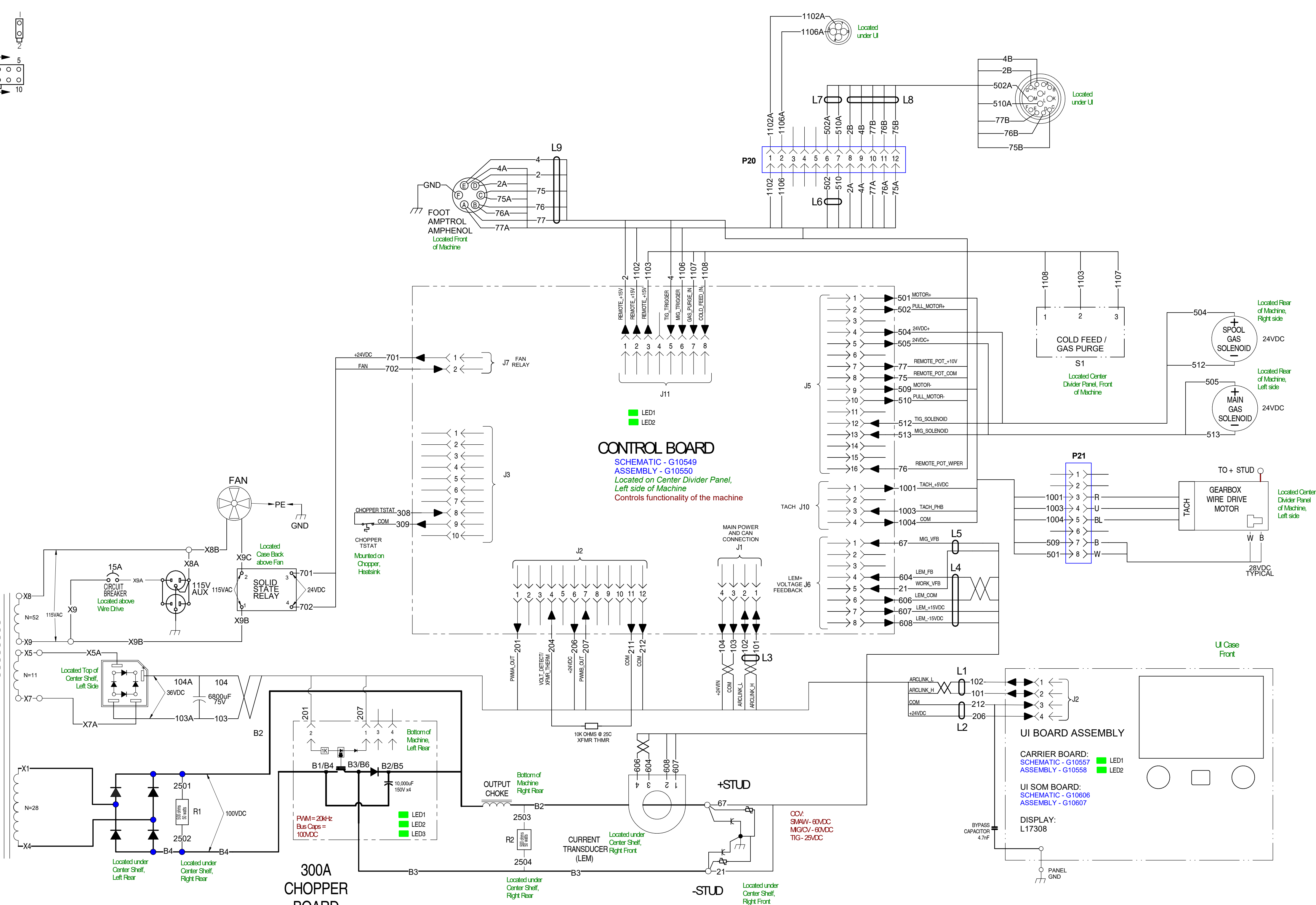
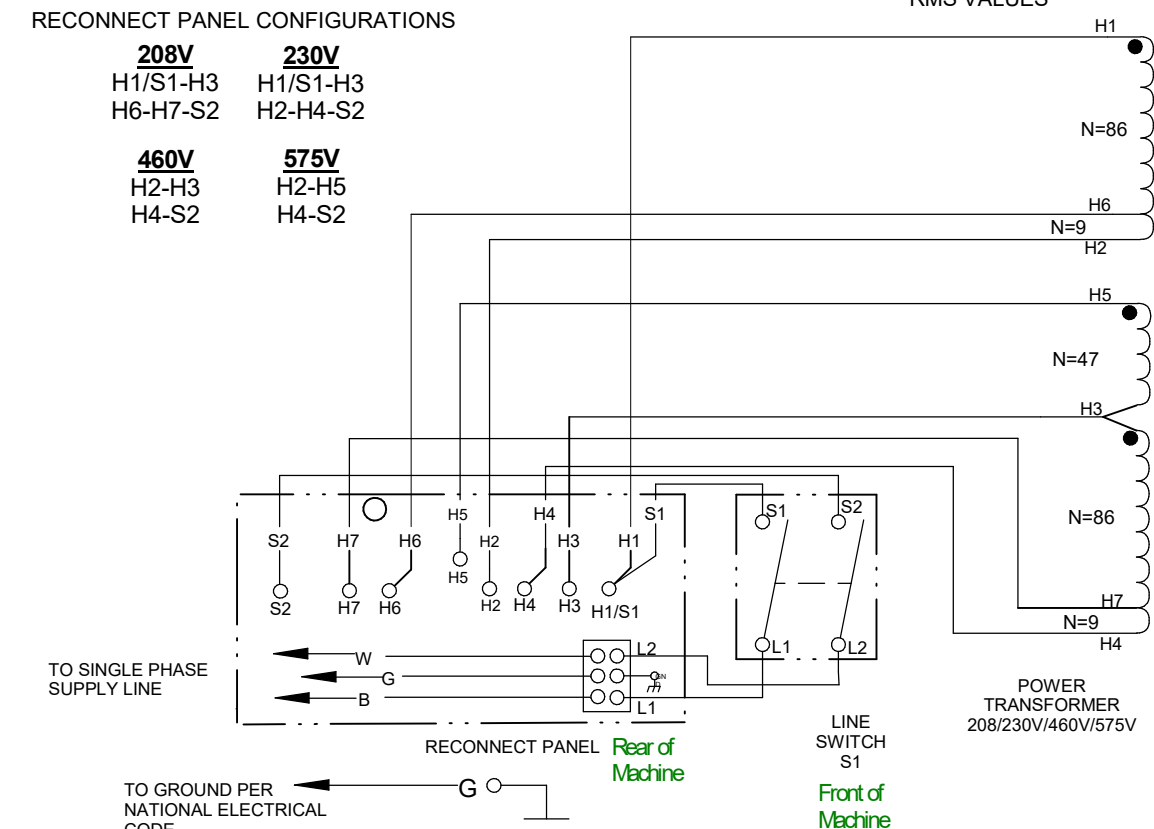
CONNECTOR CAVITY NUMBERING SEQUENCE
 (VIEWED FROM COMPONENT SIDE OF BOARD)

L1 THROUGH L9 ARE RF TOROIDS

RECONNECT PANEL CONFIGURATIONS

208V H1/S1-H3 H6-H7-S2
 230V H1/S1-H3 H2-H4-S2
 460V H2-H3 H4-S2
 575V H2-H5 H4-S2

SECONDARY VOLTAGES SHOWN ARE NO LOAD RMS VALUES

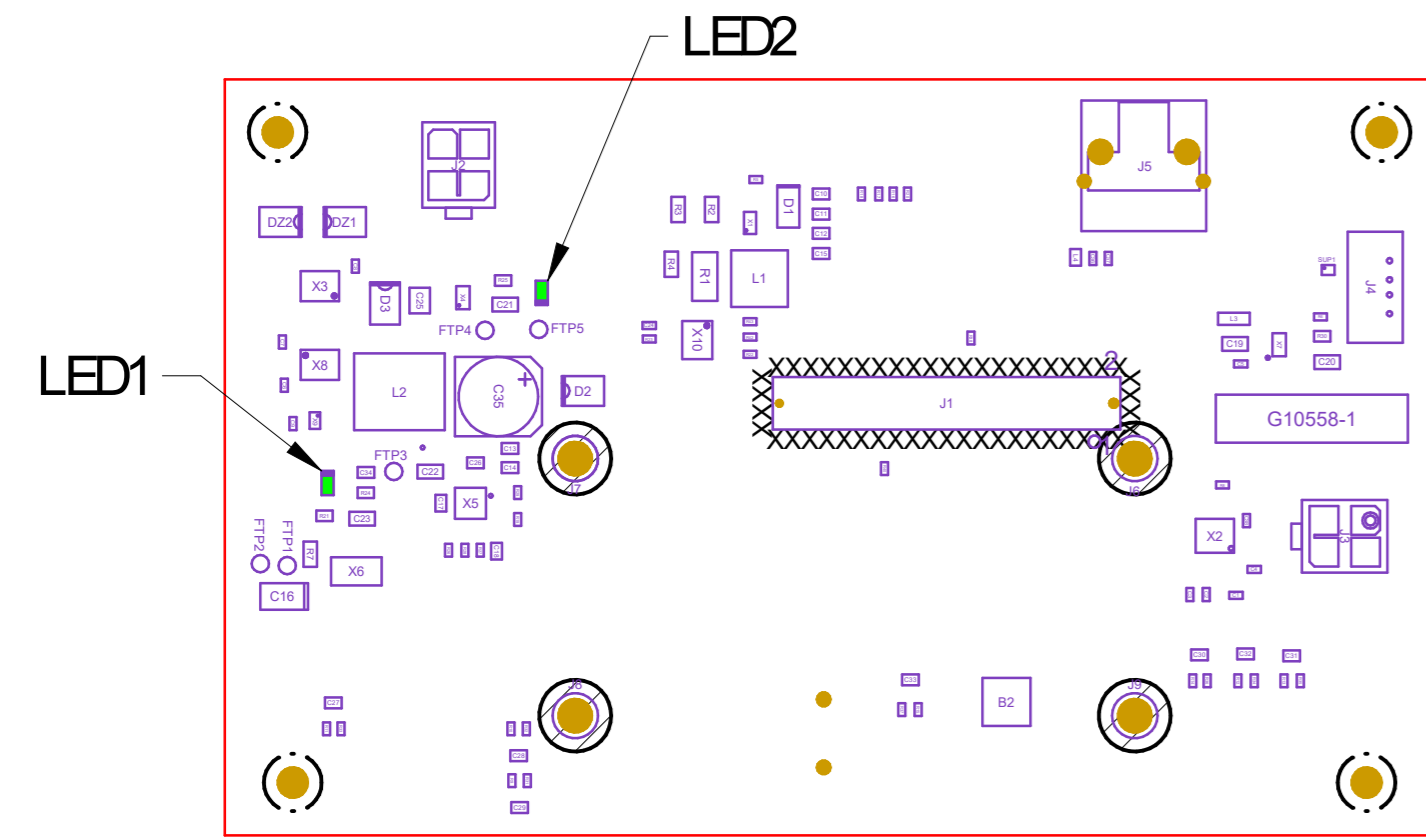


300A CHOPPER BOARD
 SCHEMATIC - G11464
 PCB ASSEMBLY - G11465
 FINAL ASSEMBLY - L11497
 Located on Bottom of Machine, Left Rear
 Creates machine welding output

CONTROL BOARD
 SCHEMATIC - G10549
 ASSEMBLY - G10550
 Located on Center Divider Panel, Left side of Machine
 Controls functionality of the machine

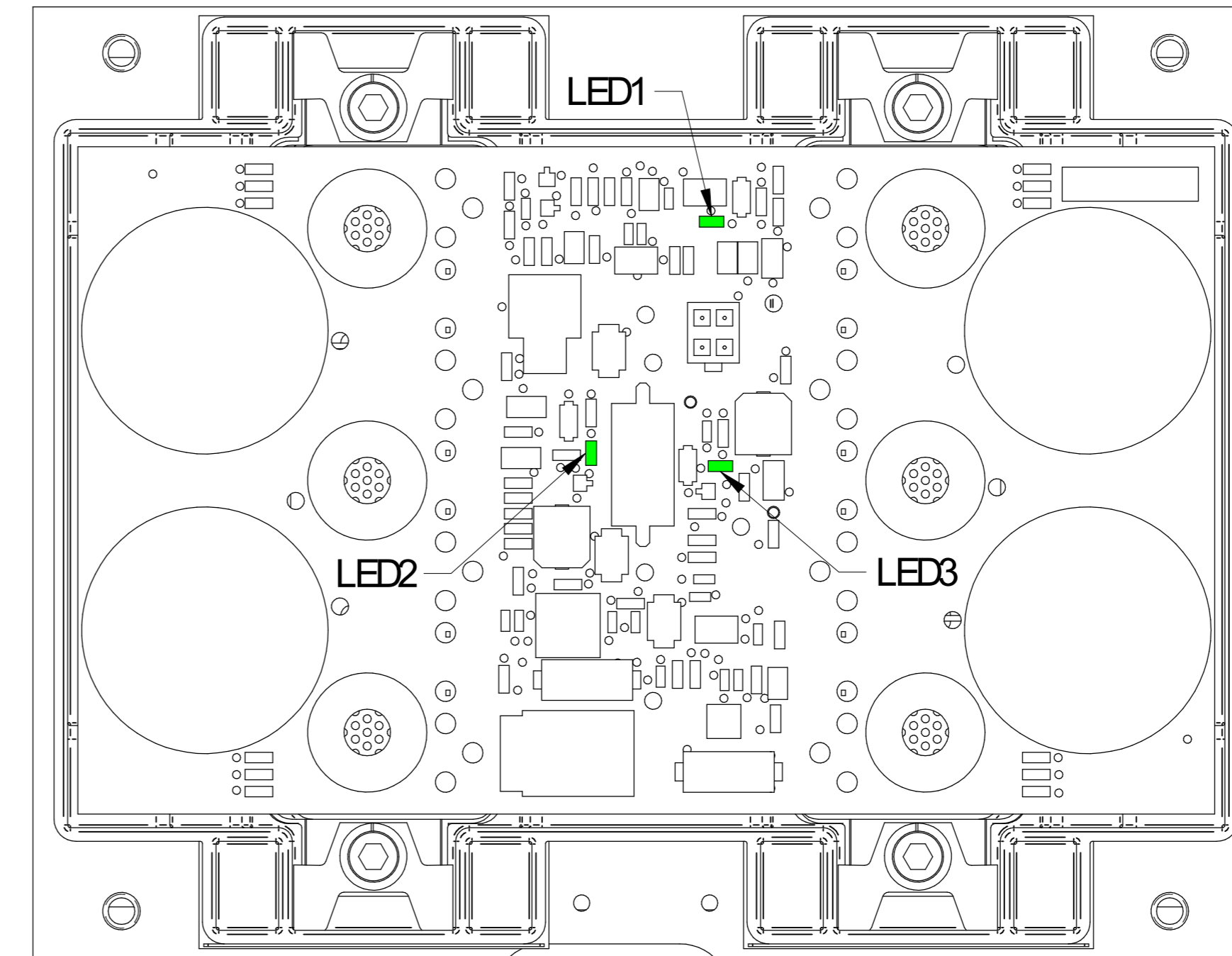
UI BOARD ASSEMBLY
 CARRIER BOARD:
 SCHEMATIC - G10557
 ASSEMBLY - G10558
 UI SOM BOARD:
 SCHEMATIC - G10606
 ASSEMBLY - G10607
 DISPLAY:
 L17308

LEAD COLOR CODE:		COMPONENT VALUE UNITS:	
B	BLACK OR GRAY	CAPACITOR:	MFD/VOLTS
G	GREEN	RESISTOR:	OHMS/WATTS
O	ORANGE	CONNECTOR PIN NUMBERS:	
R	RED	EX: 12 PIN CONNECTOR	
U	BLUE		
W	WHITE	VIEW OF CONNECTOR ON PC BOARD	
Y	YELLOW		
LABELS:			
⊕	COMMON		
⏏	FRAME GROUND		
⏏	EARTH GROUND		



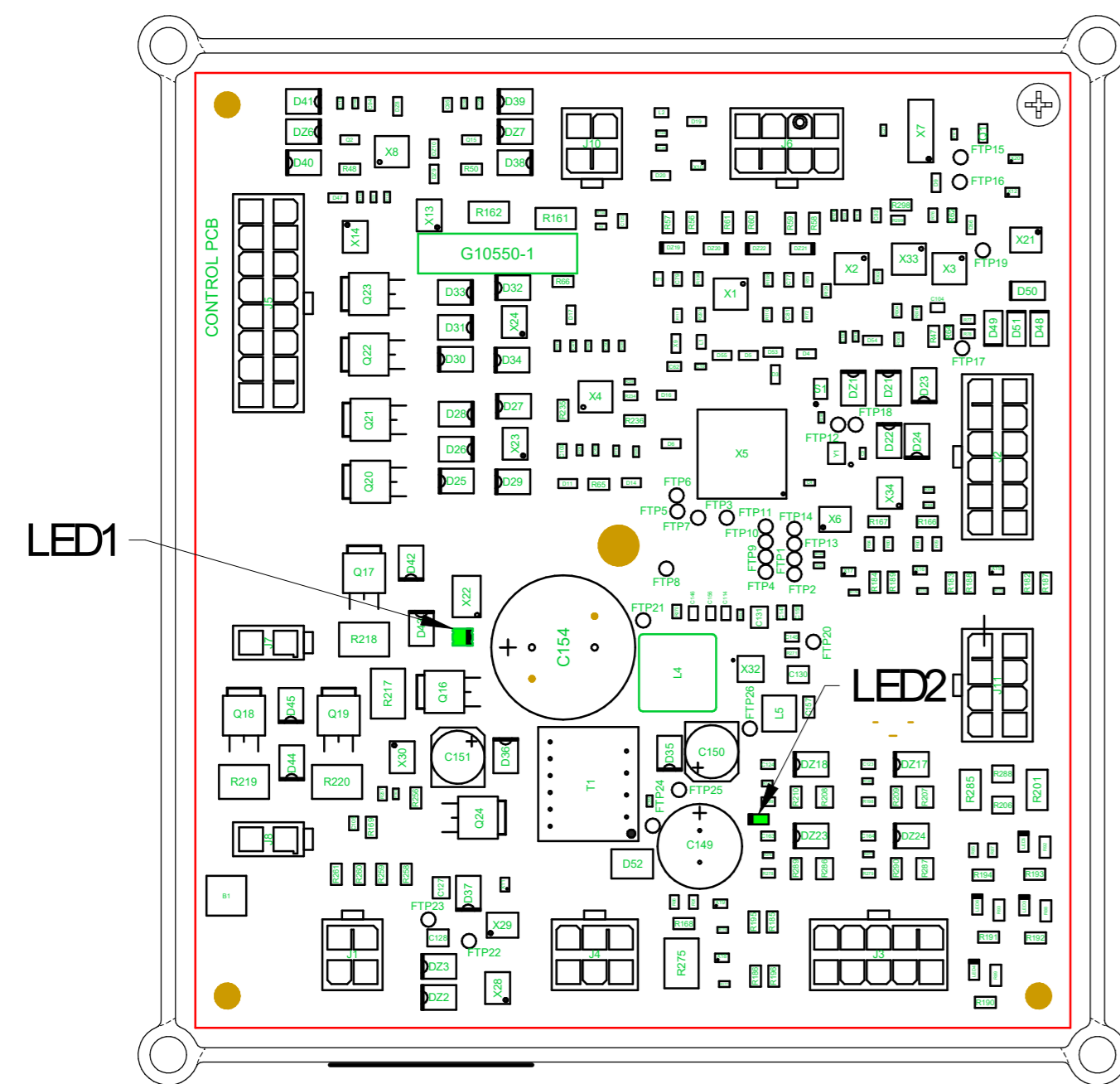
G10558 UI BOARD
BOTTOM VIEW

ON BOARD LEDS FOR THE UI BOARD			
LED	COLOR	FUNCTION	INDICATION
1	GREEN	+5V SOURCE	NORMAL CONDITION: STEADY GREEN
2	GREEN	+5V CAN SOURCE	NORMAL CONDITION: STEADY GREEN



L11497-3 CHOPPER BOARD
TOP VIEW

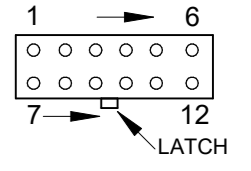
ON BOARD LEDS FOR THE CHOPPER BOARD			
LED	COLOR	FUNCTION	INDICATION
1	GREEN	PWM INPUT	NORMAL CONDITION: OUTPUT OFF - LED OFF OUTPUT ON - RAPID BLINKING OR STEADY GREEN
2	GREEN	BUS VOLTAGE	NORMAL CONDITION: STEADY GREEN
3	GREEN	CHOPPER SWITCHING	NORMAL CONDITION: OUTPUT OFF - LED OFF OUTPUT ON - RAPID BLINKING OR STEADY GREEN



G10550 CONTROL BOARD
TOP VIEW

ON BOARD LEDS FOR THE CONTROL BOARD			
LED	COLOR	FUNCTION	INDICATION
1	GREEN	STATUS	NORMAL CONDITION: STEADY GREEN FAULT CONDITION: OFF OR BLINKS FAULT CODE - RED
2	GREEN	+15V SOURCE	NORMAL CONDITION: STEADY GREEN

FAN OPERATION	
STARTUP	FAN TURNS ON FOR 5 SECONDS THEN CYCLES OFF
OUTPUT	FAN TURNS ON WHEN OUTPUT OR OCV IS TRIGGERED. FAN RUNS FOR 7 MINUTES AFTER OUTPUT/OCV IS OFF.
THERMAL	FAN TURNS ON WHEN TRANSFORMER THERMISTOR REACHES THE "IDLE THERMAL THRESHOLD". FAN TURNS OFF WHEN TRANSFORMER THERMISTOR REACHES THE "CLEAR THERMAL TRIP" SET POINT.

<p>LEAD COLOR CODE: B-BLACK or GRAY G-GREEN O-ORANGE R-RED U-BLUE W-WHITE Y-YELLOW</p> <p>LABELS: ▽ COMMON ≡ FRAME GROUND ⊥ EARTH GROUND</p>	<p>COMPONENT VALUE UNITS: CAPACITOR: MFD/VOLTS RESISTOR: OHMS/WATTS</p> <p>CONNECTOR PIN NUMBERS: EX. 12 PIN CONNECTOR</p>  <p>VIEW OF CONNECTOR ON PC BOARD</p>
--	--