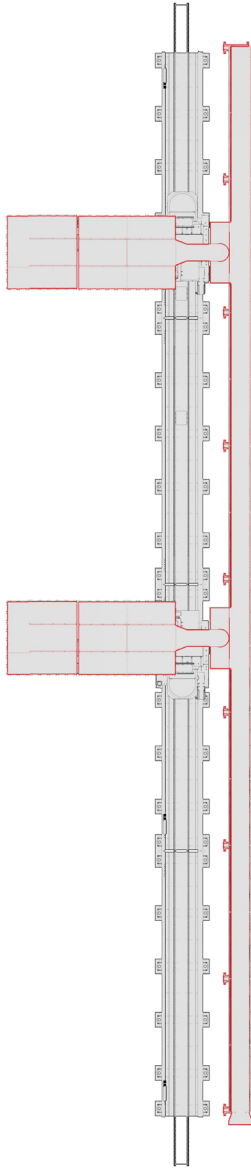


STANDARD LAYOUT



Drawing is for reference only

ADD-ON DETAILS

EXTRACTION HOODS

The extraction hoods include baffle plates to optimize suction performance. Each hood has an extraction capacity of 5600 m³/h, with a total capacity of up to 12,350 m³/h depending on frequency.

Max. Extraction hood dimensions: 3760 mm x 1650 mm x 2500 mm.

AIRFLOW REGULATION

The system uses galvanized pipes with smooth interiors to maintain high airflow speeds and reduce pressure losses. The system includes regulation dampers to adjust suction power, which are set during commissioning.

Transport speed: min. 12 m/s

SUCTION CAPACITY

The system enables significant dilution of captured pollutants, thanks to a constant total airflow, regardless of how many suction units are in operation.

At the duct connection: 11,200 m³/h

Depending on frequency: up to 12,350 m³/h

Per hood: 5,600 m³/h

FUME CONTROL AT LINCOLN ELECTRIC

At Lincoln Electric®, we recognize that effective fume control is essential to maintaining a safe and healthy welding environment. That's why we design, manufacture, and install our own advanced fume extraction systems—delivering high-performance solutions tailored to your welding and cutting operations.

If you're already using ambient fume extraction, we'll ensure our system integrates seamlessly with your setup. We're also happy to support you in designing a customized welding fume extraction solution based on your facility layout.

PRODUCT SPECIFICATIONS

Product Name	System Dimensions LxWxH in. (mm) / (inch)
Extraction Hood	1658 x 3721 x 6350 mm [5.44" x 12.20" x 20.83"]

The operation of welding fume control equipment is affected by various factors including proper use and positioning of the equipment, maintenance of the equipment and the specific welding procedure and application involved. Worker exposure level should be checked upon installation and periodically thereafter to be certain it is within the OSHA PEL, ACGIH TLV, or other applicable limits.

CUSTOMER ASSISTANCE POLICY

The business of Lincoln Electric is manufacturing and selling high quality welding equipment, automated welding systems, consumables, and cutting equipment. Our challenge is to meet the needs of our customers, who are experts in their fields, and to exceed their expectations. On occasion, purchasers may ask Lincoln Electric for information or technical information about their use of our products. Our employees respond to inquiries to the best of their ability based on information and specifications provided to them by the customers and the knowledge they may have concerning the application. Our employees, however, are not in a position to verify the information provided or to evaluate the engineering requirements for the particular weldment, or to provide engineering advice in relation to a specific situation or application. Accordingly, Lincoln Electric does not warrant or guarantee or assume any liability with respect to such information or communications. Moreover, the provision of such information or technical information does not create, expand, or alter any warranty on our products. Any express or implied warranty that might arise from the information or technical information, including any implied warranty of merchantability or any warranty of fitness for any customers' particular purpose or any other equivalent or similar warranty is specifically disclaimed.

Lincoln Electric is a responsive manufacturer, but the definition of specifications, and the selection and use of specific products sold by Lincoln Electric is solely within the control of, and remains the sole responsibility of the customer. Many variables beyond the control of Lincoln Electric affect the results obtained in applying these types of fabrication methods and service requirements.