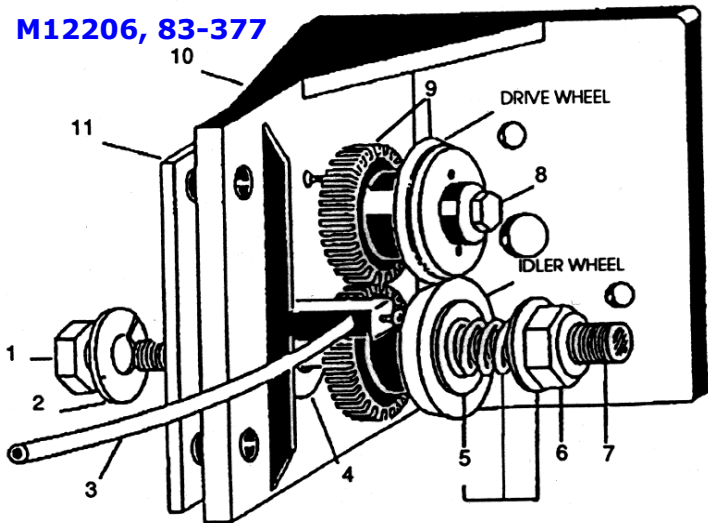


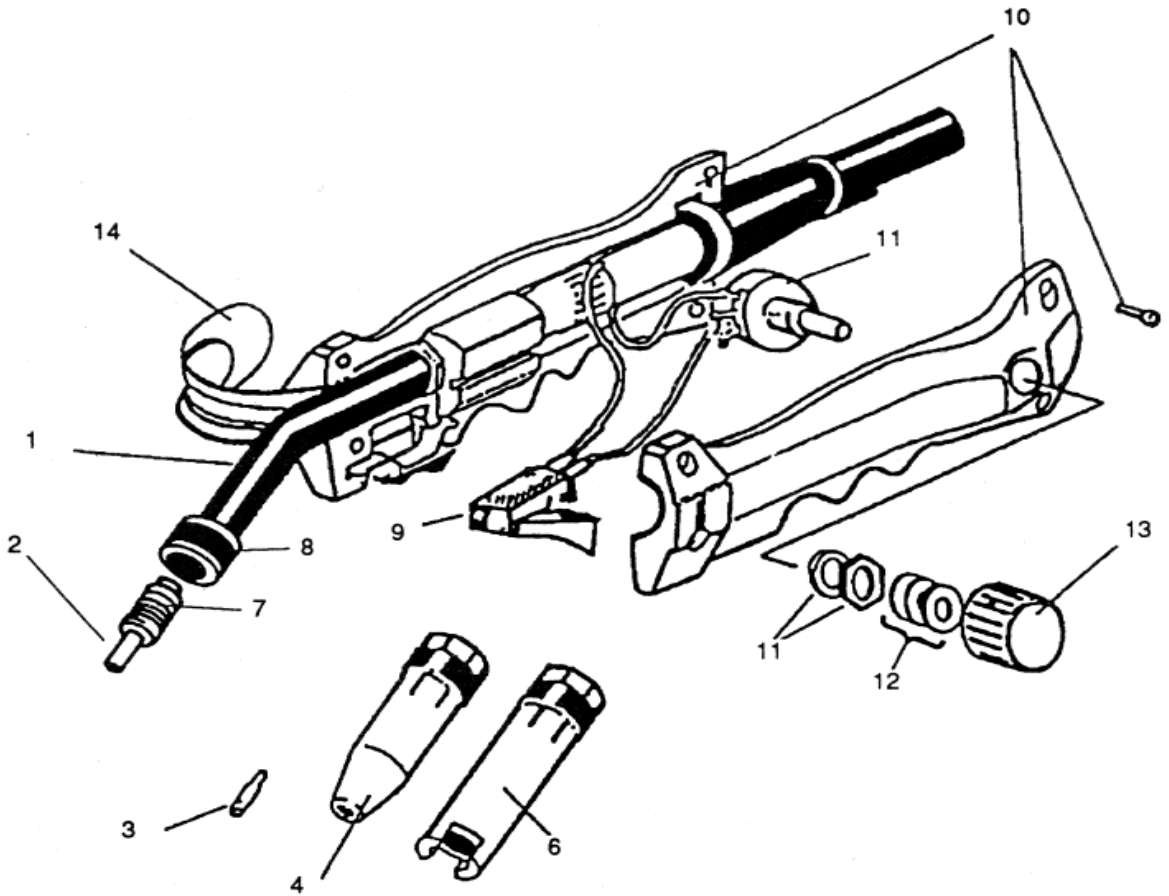
# M12206, 83-377



Item	Catalog #	Description
1	B7134370	3/8" Hex Nut
2	B7135370	3/8" Lockwasher
3	B7136370	Guide Cable, 10"
4	B7199370	5/16" Flatwasher
5	B7137370	Nylon Washer (2) w Tension Spring
6	B7140370	Jam Nut
7	B7138370	Shaft
8	B7141370	M12 Fillester Head Screw
9	B7142370	Drive & Idle Wheel Assy.
10	B7143370	Plastic Motor Bracket
11	B7144370	Reinforcing Plate

11/30/2006

# M15459 (10') Synergic Mig Gun



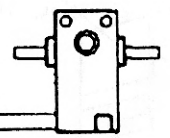
Item #	Lincoln #	Old Numbers	Description
1	334-628-000	B7123370	Swan Neck
2	334-632-000	246311	Gas Diffuser
3	KP2052-1	M15522	Contact tip, 0.025
	KP2052-2	M15523	Contact tip, 0.030
	KP2052-3	M15524	Contact tip, 0.035
4	KH721	M15520, 334-164-400	Steel Welding Nozzle
6	KH731	M15521, 334-162-300	Spot Welding Nozzle
7	334-172-000	B7124370	Nozzle Spring
8		B7218370	Head Insulator
9		B7219370	Orange Trigger Switch Assembly
10		B7221370	Blue Handle Parts w/ Screws
11		B7194370	Potentiometer w/ Nut & Lockwasher
12		B7195370	Springwashers
13		B7196370	Control Knob
14		B7188370	Gun Hook
16	411-121-666	M15192	Steel Liner (Not Shown)
	411-123-666	M15194	Teflon Liner (Not Shown)

**Used on M12206 & M12207**

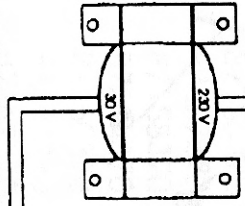
**M12206, 83-377**

M12206, 83-377

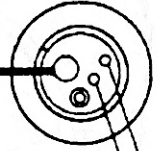
GAS SOLENOID



CONTROL TRANSFORMER



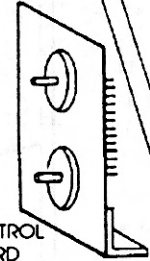
TORCH CONNECTION



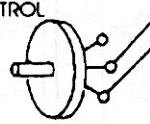
WORK CLAMP (-)



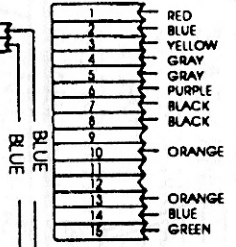
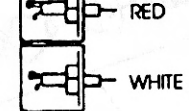
CONTROL BOARD



POWER CONTROL



8 AMP SLO-BLO FUSE



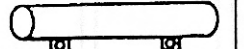
WHITE



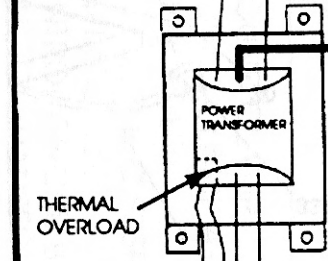
CAPACITOR



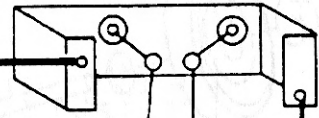
BLEEDER RESISTOR



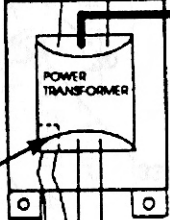
THERMAL OVERLOAD



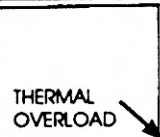
RECTIFIER ASSEMBLY



POWER TRANSFORMER



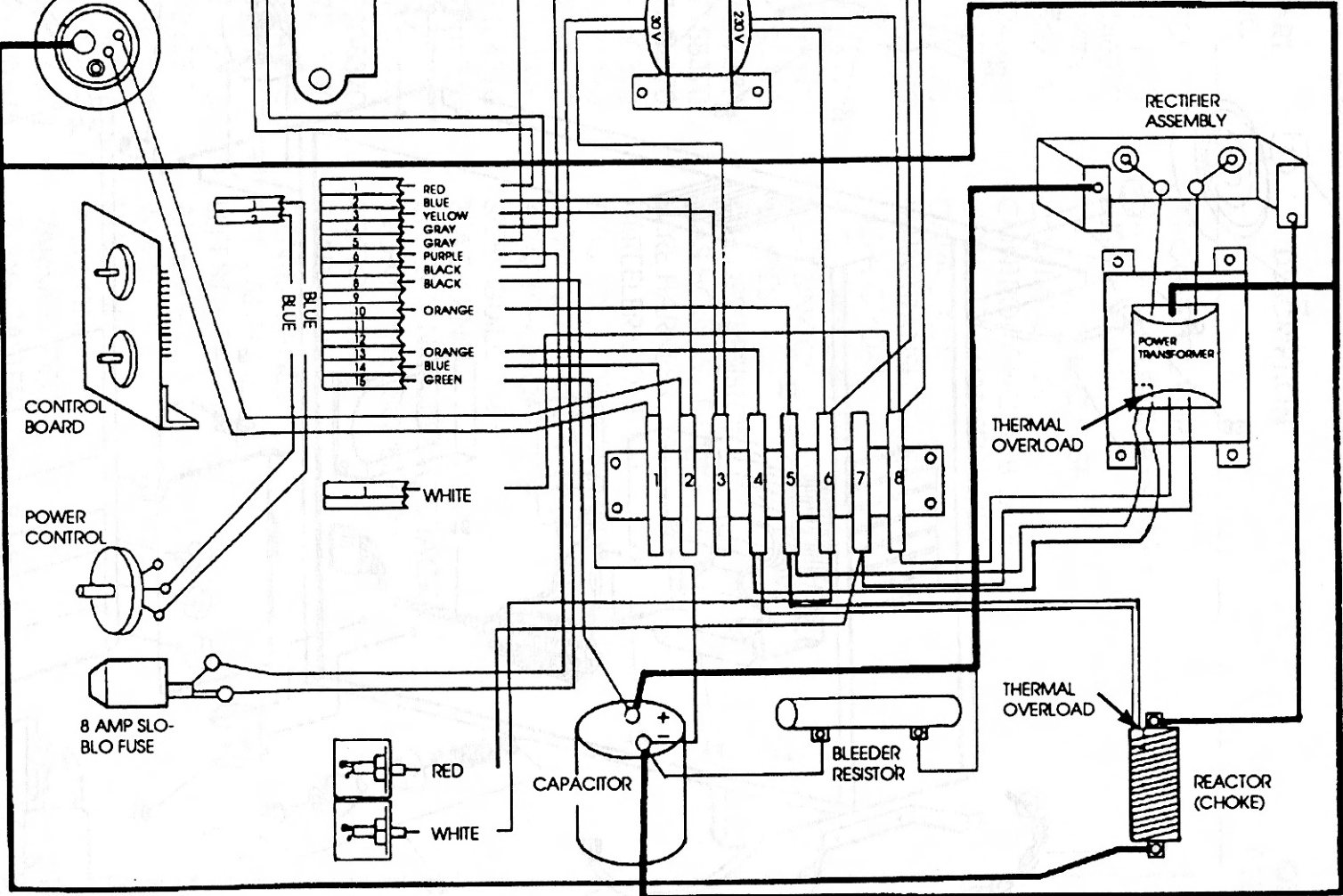
THERMAL OVERLOAD



REACTOR (CHOKE)



# SYNERGIC WIRING DIAGRAM





# M12206, 83-377

Item	Lincoln Stock #	Customer #	Description
1	239-010-301	M15305	Ground Clamp
2		B7145370	Ground Cable Assembly
3		B7146370	Fuse Holder
4		B7147370	8 Amp Slo-Blo Fuse
5		B7202370	Power Potentiometer
6		B7240370	Control Circuit Board
7		B7150370	Control Transformer (30V)
8		B7151370	Capacitor
9		B7152370	Main Transformer
10		B7153370	Reactor Coil
11		B7154370	Power Cord
12		B7155370	Heat Sink w/ Diodes
13		B7156370	Diode
14		B7157370	Bleeder Resistor
15		B7158370	Gas Hose w/ fitting
16		B7204370	Wire Harness
17		B7160370	Dereeler Cone Set
18		B7161370	Gas Solenoid
19		B7162370	Drive Motor Assembly
20		B7163370	Adaptor Block
21		B7164370	Steel Guide Tube
22		B7205370	Black Knob

Item	Lincoln Stock #	Customer #	Description
23		B7177370	Upper Tank Support Bracket
24		B7207370	Front Panel
25		B7208370	Base
26		B7209370	Back Panel
27		B7210370	Center Panel
28		B7211370	Top Panel
29		B7212370	Left Side Panel
30		B7213370	Axle
31		62964321	Wheel
32		69940980	Hub Cap
33	239-038-400	M15541	Power Plug, 6-50P
34		B7128619	Warning Decal
35		B7170370	Front Caster
36		B7176370	Chain & Eye Bolt Assembly
37		B7227370	Right Side Panel
38		B7166370	Plastic Adapter
39		B7226370	Top Handle

## Not Shown

40		M15459	10' Mig Gun
41	411-121-666	M15192	Steel Liner
	411-123-666	M15194	Teflon Liner
42	334-303-001	334-286-666	Gas Regulator

12/12/2006

Model	Primary Input	Input Plug	Duty Cycle
M12206	208/230, 20 amp	50A, 6-50P	40% @ 180 amps

Rated Output	Voltage Settings	Agency Listing	Max Output
180	Infinite	CSA	180 amps, 3/8"