

Operator's Manual

Infinity-Pak[®] Station



For use with machines having K Numbers:

K3926-1, K3927-1, K4106-1



Register your machine:

www.lincolnelectric.com/register

Authorized Service and Distributor Locator:

www.lincolnelectric.com/locator

Save for future reference

Date Purchased

Code: (ex: 10859)

Serial: (ex: U1060512345)

THANK YOU FOR SELECTING A QUALITY PRODUCT BY LINCOLN ELECTRIC.

PLEASE EXAMINE CARTON AND EQUIPMENT FOR DAMAGE IMMEDIATELY

When this equipment is shipped, title passes to the purchaser upon receipt by the carrier. Consequently, claims for material damaged in shipment must be made by the purchaser against the transportation company at the time the shipment is received.

SAFETY DEPENDS ON YOU

Lincoln arc welding and cutting equipment is designed and built with safety in mind. However, your overall safety can be increased by proper installation ... and thoughtful operation on your part. **DO NOT INSTALL, OPERATE OR REPAIR THIS EQUIPMENT WITHOUT READING THIS MANUAL AND THE SAFETY PRECAUTIONS CONTAINED THROUGHOUT.** And, most importantly, think before you act and be careful.

WARNING

This statement appears where the information must be followed exactly to avoid serious personal injury or loss of life.

CAUTION

This statement appears where the information must be followed to avoid minor personal injury or damage to this equipment.



KEEP YOUR HEAD OUT OF THE FUMES.

DON'T get too close to the arc. Use corrective lenses if necessary to stay a reasonable distance away from the arc.

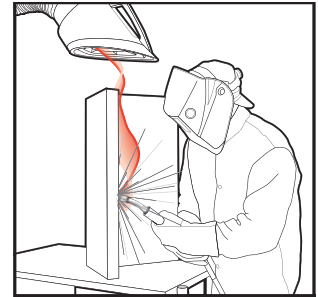
READ and obey the Safety Data Sheet (SDS) and the warning label that appears on all containers of welding materials.

USE ENOUGH VENTILATION or exhaust at the arc, or both, to keep the fumes and gases from your breathing zone and the general area.

IN A LARGE ROOM OR OUTDOORS, natural ventilation may be adequate if you keep your head out of the fumes (See below).

USE NATURAL DRAFTS or fans to keep the fumes away from your face.

If you develop unusual symptoms, see your supervisor. Perhaps the welding atmosphere and ventilation system should be checked.



WEAR CORRECT EYE, EAR & BODY PROTECTION

PROTECT your eyes and face with welding helmet properly fitted and with proper grade of filter plate (See ANSI Z49.1).

PROTECT your body from welding spatter and arc flash with protective clothing including woolen clothing, flame-proof apron and gloves, leather leggings, and high boots.

PROTECT others from splatter, flash, and glare with protective screens or barriers.

IN SOME AREAS, protection from noise may be appropriate.

BE SURE protective equipment is in good condition.

Also, wear safety glasses in work area **AT ALL TIMES.**



SPECIAL SITUATIONS

DO NOT WELD OR CUT containers or materials which previously had been in contact with hazardous substances unless they are properly cleaned. This is extremely dangerous.

DO NOT WELD OR CUT painted or plated parts unless special precautions with ventilation have been taken. They can release highly toxic fumes or gases.

Additional precautionary measures

PROTECT compressed gas cylinders from excessive heat, mechanical shocks, and arcs; fasten cylinders so they cannot fall.

BE SURE cylinders are never grounded or part of an electrical circuit.

REMOVE all potential fire hazards from welding area.

ALWAYS HAVE FIRE FIGHTING EQUIPMENT READY FOR IMMEDIATE USE AND KNOW HOW TO USE IT.



SECTION A: WARNINGS



CALIFORNIA PROPOSITION 65 WARNINGS



WARNING: Breathing diesel engine exhaust exposes you to chemicals known to the State of California to cause cancer and birth defects, or other reproductive harm.

- Always start and operate the engine in a well-ventilated area.
- If in an exposed area, vent the exhaust to the outside.
- Do not modify or tamper with the exhaust system.
- Do not idle the engine except as necessary.

For more information go to
www.P65warnings.ca.gov/diesel

WARNING: This product, when used for welding or cutting, produces fumes or gases which contain chemicals known to the State of California to cause birth defects and, in some cases, cancer. (California Health & Safety Code § 25249.5 *et seq.*)



WARNING: Cancer and Reproductive Harm
www.P65warnings.ca.gov

ARC WELDING CAN BE HAZARDOUS. PROTECT YOURSELF AND OTHERS FROM POSSIBLE SERIOUS INJURY OR DEATH. KEEP CHILDREN AWAY. PACEMAKER WEARERS SHOULD CONSULT WITH THEIR DOCTOR BEFORE OPERATING.

Read and understand the following safety highlights. For additional safety information, it is strongly recommended that you purchase a copy of "Safety in Welding & Cutting - ANSI Standard Z49.1" from the American Welding Society, P.O. Box 351040, Miami, Florida 33135 or CSA Standard W117.2-1974. A Free copy of "Arc Welding Safety" booklet E205 is available from the Lincoln Electric Company, 22801 St. Clair Avenue, Cleveland, Ohio 44117-1199.

BE SURE THAT ALL INSTALLATION, OPERATION, MAINTENANCE AND REPAIR PROCEDURES ARE PERFORMED ONLY BY QUALIFIED INDIVIDUALS.



FOR ENGINE POWERED EQUIPMENT.

- 1.a. Turn the engine off before troubleshooting and maintenance work unless the maintenance work requires it to be running.
- 1.b. Operate engines in open, well-ventilated areas or vent the engine exhaust fumes outdoors.
- 1.c. Do not add the fuel near an open flame welding arc or when the engine is running. Stop the engine and allow it to cool before refueling to prevent spilled fuel from vaporizing on contact



with hot engine parts and igniting. Do not spill fuel when filling tank. If fuel is spilled, wipe it up and do not start engine until fumes have been eliminated.

- 1.d. Keep all equipment safety guards, covers and devices in position and in good repair. Keep hands, hair, clothing and tools away from V-belts, gears, fans and all other moving parts when starting, operating or repairing equipment.
- 1.e. In some cases it may be necessary to remove safety guards to perform required maintenance. Remove guards only when necessary and replace them when the maintenance requiring their removal is complete. Always use the greatest care when working near moving parts.
- 1.f. Do not put your hands near the engine fan. Do not attempt to override the governor or idler by pushing on the throttle control rods while the engine is running.
- 1.g. To prevent accidentally starting gasoline engines while turning the engine or welding generator during maintenance work, disconnect the spark plug wires, distributor cap or magneto wire as appropriate.
- 1.h. To avoid scalding, do not remove the radiator pressure cap when the engine is hot.



ELECTRIC AND MAGNETIC FIELDS MAY BE DANGEROUS



- 2.a. Electric current flowing through any conductor causes localized Electric and Magnetic Fields (EMF). Welding current creates EMF fields around welding cables and welding machines
- 2.b. EMF fields may interfere with some pacemakers, and welders having a pacemaker should consult their physician before welding.
- 2.c. Exposure to EMF fields in welding may have other health effects which are now not known.
- 2.d. All welders should use the following procedures in order to minimize exposure to EMF fields from the welding circuit:
 - 2.d.1. Route the electrode and work cables together - Secure them with tape when possible.
 - 2.d.2. Never coil the electrode lead around your body.
 - 2.d.3. Do not place your body between the electrode and work cables. If the electrode cable is on your right side, the work cable should also be on your right side.
 - 2.d.4. Connect the work cable to the workpiece as close as possible to the area being welded.
 - 2.d.5. Do not work next to welding power source.



ELECTRIC SHOCK CAN KILL.



- 3.a. The electrode and work (or ground) circuits are electrically “hot” when the welder is on. Do not touch these “hot” parts with your bare skin or wet clothing. Wear dry, hole-free gloves to insulate hands.
- 3.b. Insulate yourself from work and ground using dry insulation. Make certain the insulation is large enough to cover your full area of physical contact with work and ground.

In addition to the normal safety precautions, if welding must be performed under electrically hazardous conditions (in damp locations or while wearing wet clothing; on metal structures such as floors, gratings or scaffolds; when in cramped positions such as sitting, kneeling or lying, if there is a high risk of unavoidable or accidental contact with the workpiece or ground) use the following equipment:

- Semiautomatic DC Constant Voltage (Wire) Welder.
 - DC Manual (Stick) Welder.
 - AC Welder with Reduced Voltage Control.
- 3.c. In semiautomatic or automatic wire welding, the electrode, electrode reel, welding head, nozzle or semiautomatic welding gun are also electrically “hot”.
 - 3.d. Always be sure the work cable makes a good electrical connection with the metal being welded. The connection should be as close as possible to the area being welded.
 - 3.e. Ground the work or metal to be welded to a good electrical (earth) ground.
 - 3.f. Maintain the electrode holder, work clamp, welding cable and welding machine in good, safe operating condition. Replace damaged insulation.
 - 3.g. Never dip the electrode in water for cooling.
 - 3.h. Never simultaneously touch electrically “hot” parts of electrode holders connected to two welders because voltage between the two can be the total of the open circuit voltage of both welders.
 - 3.i. When working above floor level, use a safety belt to protect yourself from a fall should you get a shock.
 - 3.j. Also see Items 6.c. and 8.



ARC RAYS CAN BURN.



- 4.a. Use a shield with the proper filter and cover plates to protect your eyes from sparks and the rays of the arc when welding or observing open arc welding. Headshield and filter lens should conform to ANSI Z87.1 standards.
- 4.b. Use suitable clothing made from durable flame-resistant material to protect your skin and that of your helpers from the arc rays.
- 4.c. Protect other nearby personnel with suitable, non-flammable screening and/or warn them not to watch the arc nor expose themselves to the arc rays or to hot spatter or metal.



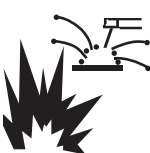
FUMES AND GASES CAN BE DANGEROUS.



- 5.a. Welding may produce fumes and gases hazardous to health. Avoid breathing these fumes and gases. When welding, keep your head out of the fume. Use enough ventilation and/or exhaust at the arc to keep fumes and gases away from the breathing zone. **When welding hardfacing (see instructions on container or SDS) or on lead or cadmium plated steel and other metals or coatings which produce highly toxic fumes, keep exposure as low as possible and within applicable OSHA PEL and ACGIH TLV limits using local exhaust or mechanical ventilation unless exposure assessments indicate otherwise. In confined spaces or in some circumstances, outdoors, a respirator may also be required. Additional precautions are also required when welding on galvanized steel.**
- 5.b. The operation of welding fume control equipment is affected by various factors including proper use and positioning of the equipment, maintenance of the equipment and the specific welding procedure and application involved. Worker exposure level should be checked upon installation and periodically thereafter to be certain it is within applicable OSHA PEL and ACGIH TLV limits.
- 5.c. Do not weld in locations near chlorinated hydrocarbon vapors coming from degreasing, cleaning or spraying operations. The heat and rays of the arc can react with solvent vapors to form phosgene, a highly toxic gas, and other irritating products.
- 5.d. Shielding gases used for arc welding can displace air and cause injury or death. Always use enough ventilation, especially in confined areas, to insure breathing air is safe.
- 5.e. Read and understand the manufacturer's instructions for this equipment and the consumables to be used, including the Safety Data Sheet (SDS) and follow your employer's safety practices. SDS forms are available from your welding distributor or from the manufacturer.
- 5.f. Also see item 1.b.



WELDING AND CUTTING SPARKS CAN CAUSE FIRE OR EXPLOSION.



- 6.a. Remove fire hazards from the welding area. If this is not possible, cover them to prevent the welding sparks from starting a fire. Remember that welding sparks and hot materials from welding can easily go through small cracks and openings to adjacent areas. Avoid welding near hydraulic lines. Have a fire extinguisher readily available.
- 6.b. Where compressed gases are to be used at the job site, special precautions should be used to prevent hazardous situations. Refer to "Safety in Welding and Cutting" (ANSI Standard Z49.1) and the operating information for the equipment being used.
- 6.c. When not welding, make certain no part of the electrode circuit is touching the work or ground. Accidental contact can cause overheating and create a fire hazard.
- 6.d. Do not heat, cut or weld tanks, drums or containers until the proper steps have been taken to insure that such procedures will not cause flammable or toxic vapors from substances inside. They can cause an explosion even though they have been "cleaned". For information, purchase "Recommended Safe Practices for the Preparation for Welding and Cutting of Containers and Piping That Have Held Hazardous Substances", AWS F4.1 from the American Welding Society (see address above).
- 6.e. Vent hollow castings or containers before heating, cutting or welding. They may explode.
- 6.f. Sparks and spatter are thrown from the welding arc. Wear oil free protective garments such as leather gloves, heavy shirt, cuffless trousers, high shoes and a cap over your hair. Wear ear plugs when welding out of position or in confined places. Always wear safety glasses with side shields when in a welding area.
- 6.g. Connect the work cable to the work as close to the welding area as practical. Work cables connected to the building framework or other locations away from the welding area increase the possibility of the welding current passing through lifting chains, crane cables or other alternate circuits. This can create fire hazards or overheat lifting chains or cables until they fail.
- 6.h. Also see item 1.c.
- 6.i. Read and follow NFPA 51B "Standard for Fire Prevention During Welding, Cutting and Other Hot Work", available from NFPA, 1 Batterymarch Park, PO box 9101, Quincy, MA 022690-9101.
- 6.j. Do not use a welding power source for pipe thawing.



CYLINDER MAY EXPLODE IF DAMAGED.



- 7.a. Use only compressed gas cylinders containing the correct shielding gas for the process used and properly operating regulators designed for the gas and pressure used. All hoses, fittings, etc. should be suitable for the application and maintained in good condition.
- 7.b. Always keep cylinders in an upright position securely chained to an undercarriage or fixed support.
- 7.c. Cylinders should be located:
 - Away from areas where they may be struck or subjected to physical damage.
 - A safe distance from arc welding or cutting operations and any other source of heat, sparks, or flame.
- 7.d. Never allow the electrode, electrode holder or any other electrically "hot" parts to touch a cylinder.
- 7.e. Keep your head and face away from the cylinder valve outlet when opening the cylinder valve.
- 7.f. Valve protection caps should always be in place and hand tight except when the cylinder is in use or connected for use.
- 7.g. Read and follow the instructions on compressed gas cylinders, associated equipment, and CGA publication P-1, "Precautions for Safe Handling of Compressed Gases in Cylinders," available from the Compressed Gas Association, 14501 George Carter Way Chantilly, VA 20151.



FOR ELECTRICALLY POWERED EQUIPMENT.



- 8.a. Turn off input power using the disconnect switch at the fuse box before working on the equipment.
- 8.b. Install equipment in accordance with the U.S. National Electrical Code, all local codes and the manufacturer's recommendations.
- 8.c. Ground the equipment in accordance with the U.S. National Electrical Code and the manufacturer's recommendations.

Refer to
<http://www.lincolnelectric.com/safety>
for additional safety information.

	Page
General Description	8
Safety Precautions.....	8
Installation.....	Section A
Assembly Instructions	A-1
Single Torch Unit.....	A-2
Two Torch Unit	A-2
Operation.....	Section B
Box Setup	B-1
Empty Wire Alert Flag	B-1
Butt Welding Instructions.....	B-2
Controls and Settings	B-2
Burr Removal from Wire Joint using the Wire Sizer	B-2
Accessories	Section C
Available Accessories	C-1
Parts Pages.....	P-757

GENERAL DESCRIPTION

This guide is designed to assist the user whose primary responsibility is to operate and maintain the Infinity-Pak® Wire Dispensing System. This manual provides specific information on installation, safety, basic operation, and maintenance. Please read, understand and follow all safety procedures. The Infinity-Pak® Wire Dispensing System utilizes a unique process that joins the end wire from an empty box with the start wire of the next full box, eliminating costly downtime for wire changeover and optimizing production time. A smooth operating wire guide arm handles the wire transfer during the automatic change, with no manual operator action required. With our easy-to-use Butt Welder, both butt-welding and flash removal operations take only seconds. We recommend that the customer shuts off the arc welding process while butt welding the two boxes. If they touch electrically live wire, they risk getting shocked. The Infinity-Pak® Wire Dispensing System works with either one or two station robotic cells (2 or 4 boxes). A convenient Docking Station that holds the Butt Welder and a deburring tool is also available for this package. Made in the U.S.A.

SAFETY PRECAUTIONS:

The Infinity-Pak® Wire Dispensing System is designed to be safe to operate, provided the user reads, understands and adheres to the safety precautions listed below. Failure to adhere to these precautions may result in personal injury and/or damage to the equipment.



WARNING



WEAR EYE PROTECTION

- When butt welding the wire ends together or deburring the wire after butt welding, always wear eye protection.



WEAR PROTECTIVE GLOVES

- When butt welding the wire ends together or deburring the wire after butt welding, always wear protective gloves.



ELECTRIC SHOCK CAN KILL

- Turn off arc welding power source before performing butt welder operation.
- Do not touch wire when butt welding. The wire is not safe to touch until after the weld is finished. Keep hands and arms away from charged wire.
- Do not touch electrically live parts or electrode with skin or wet clothing.
- Insulate your self from work and ground.
- Always wear dry insulating gloves.
- **CAUTION:** Parts may be at welding voltage during butt welding operation.

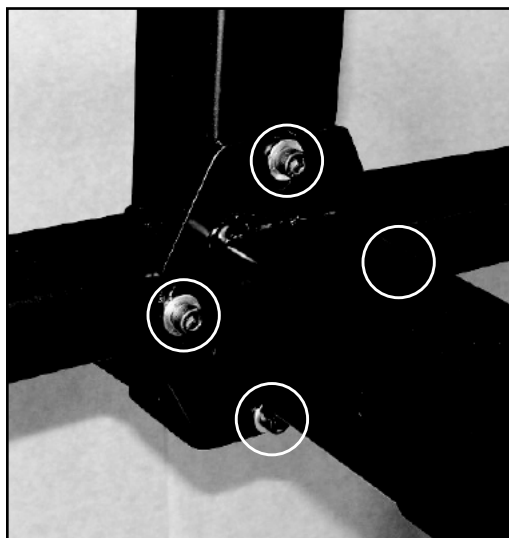
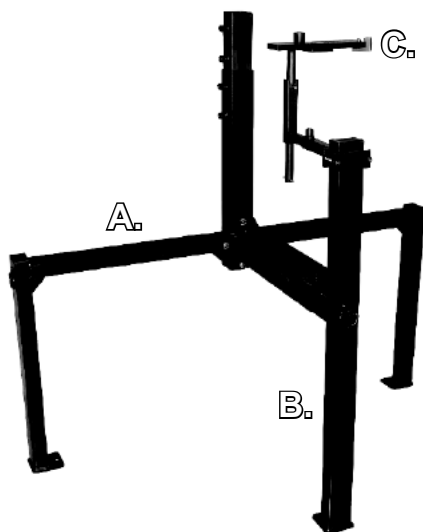


ALWAYS SECURE WIRE BOXES

- Ensure all wire boxes are firmly secured to the Infinity-Pak® Wire System with the provided wratchet straps to avoid roll away hazards.

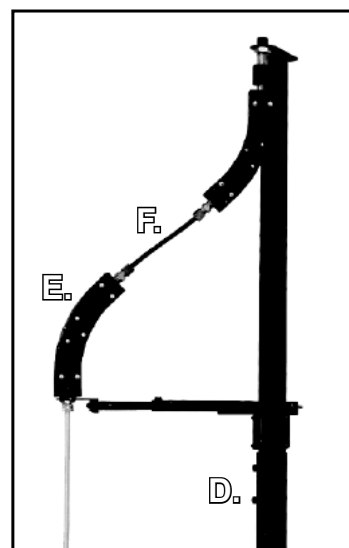
INSTALLATION

2.0 ASSEMBLY INSTRUCTIONS



1. Parts as shown:
 - A. Base
 - B. Front Leg
(adjustable length)
 - C. Wire Bridge
 - D. Center Post
 - E. Wire Guide Module
Transfer Arm
 - F. Conduit Bridge

Some models may feature additional Guide Modules on top of transfer arm.



2. Use the four nuts and bolts to attach the front leg (B) to the base (A). If the unit is for use with four boxes or drums, install the back leg on the opposite side. Note: This may already be assembled upon shipment of some units.
3. Attach the Wire Guide Module Arm Assembly (E) to the top of the center post (D). Once the post on the base is inserted into the post on the arm assembly, firmly tighten the nut to secure. Note: This may already be assembled upon shipment of some units. The arm assembly is shipped pre-adjusted for 24" (610mm) square box packaging. Do not tighten the conduit into the connectors on the Guide Modules until properly adjusted.
4. Attach the Wire Bridge (C) to the front leg using the two nuts & bolts provided. This will be adjusted later in step 7 after the wire packages are installed.



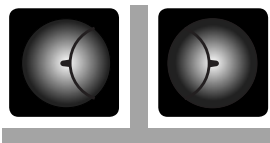
2.0 ASSEMBLY INSTRUCTIONS (Continued)

5. Insert the two wire packages into place on the left and right side of the front leg. Adjust the height of the top arm assembly by loosening the two set screws on the base. Raise arm assembly to the desired height and tighten bolts. The height should be adjusted so that the transfer arm swings freely between the two boxes, with the liner going into each slot in the box covers. The covers should face each other as shown:

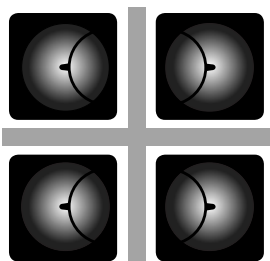
6. Secure the two wire packages in place by attaching the cam straps to each side and tightening them to prevent the boxes from rolling away. If necessary, adjust front leg so it is even with the front of the wire boxes.



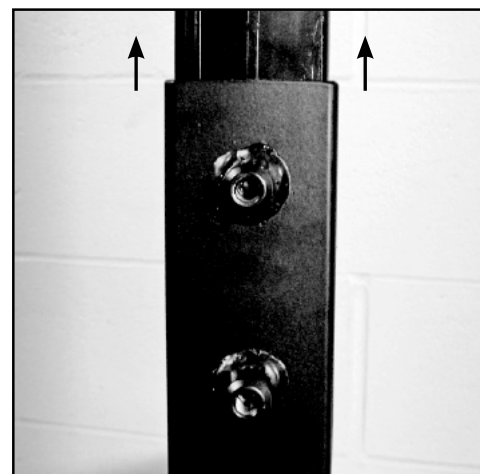
Finished Assembly



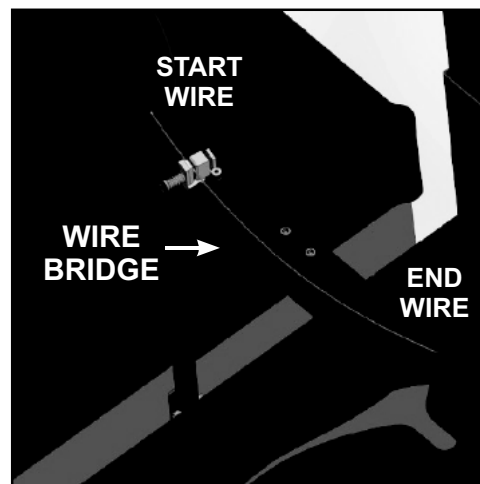
Single Torch Unit



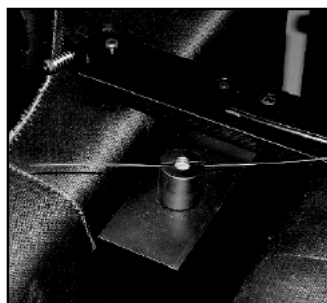
2-Torch Unit



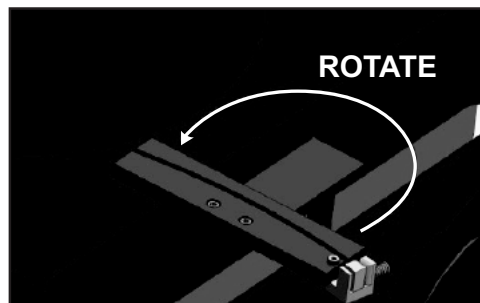
7. Adjust the wire bridge between the two packages so the top of the bridge is level with the bottom of the opening on each of the hoods. Use the two bolts on the front of the unit (requires 1/4" allen wrench) to adjust the height and the set screw at the bottom to move back and forth (using a 5mm allen wrench). **When properly adjusted, the transfer arm should swing from one box to the other staying within the slots on the box covers.**



8. Follow the instructions for welding the two wire ends together on page 6. Insert wire into the wire bridge and hold into place using the wire clamp as shown (magnets in the pathway will also assist in securing wire). **When changing wire packages, lift and rotate the wire pathway so the start wire of the new box is on the side with the wire clamp.** An end wire staging magnet is included for holding the end wire of the first box if the second box is not yet installed.



End wire staging magnet

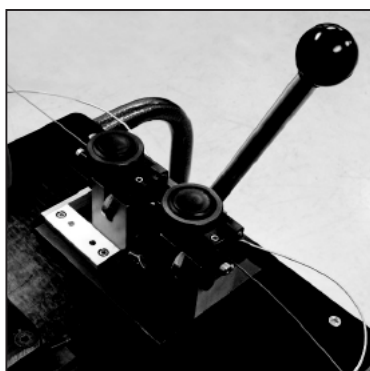


Rotate bridge when changing wire

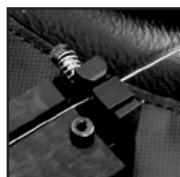
OPERATION



Join the end wire from box 1 with the start wire from box 2 using the Butt Welder (recommended accessory). Follow butt welding instructions on page B-2.



Remove the burr in the wire joint using the Wire Sizer* (recommended accessory for the docking station).

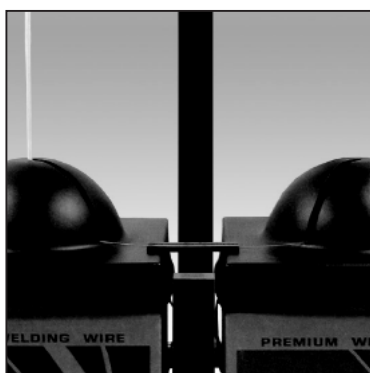
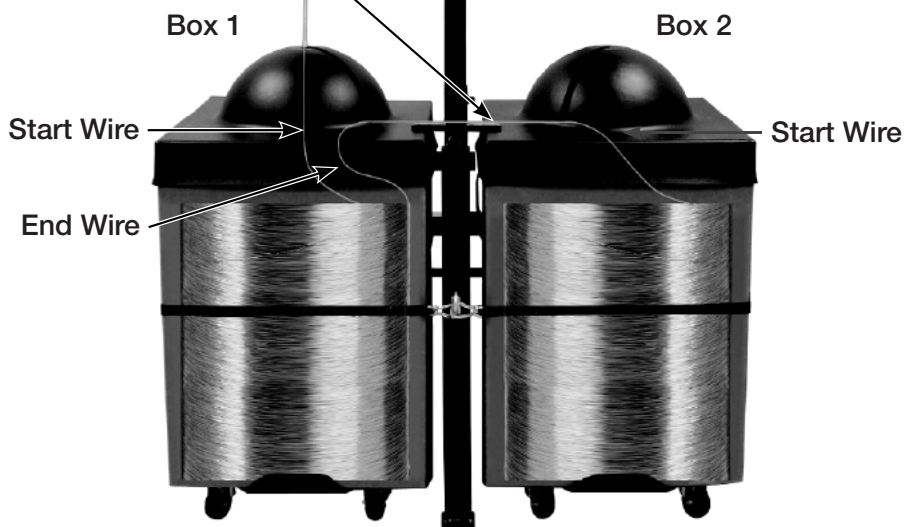


Wire Clamp If using with wire over .052 (1.3mm), disassemble and flip the clamping block around to the textured side for better gripping.

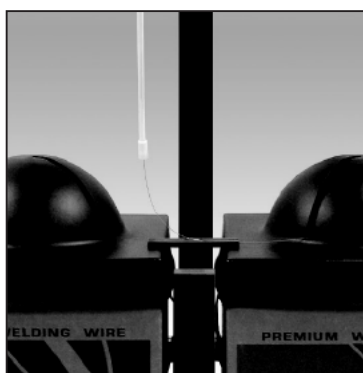
BOX SETUP



Empty Wire Alert Flag The empty wire flag installs just above the transfer arm on the center post. It should be set in the downward position toward the current active box of wire. When the box is finished, the arm will transfer and flip the flag upward.



Adjust wire bridge so it is in the proper position (see page A-2). Push in spring clamp on the wire bridge and insert wire along the groove between the two boxes. Release spring clamp to hold wire in place.

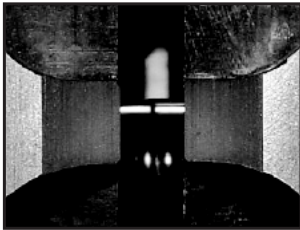


When wire from box 1 runs out, the transfer arm will switch over to box 2. Simply replace empty box and repeat steps 1-3. Flip the wire bridge when changing boxes so the spring clamp side is always opposite the side of the active box.

* Alternatively, you may remove the burr in the wire using a rotary tool with a stone bit.

3.0 BUTT WELDING INSTRUCTIONS

1. Ensure the Wire Size Select switch is in the OFF position. (center). Connect Butt Welder to power supply.
2. Pull down both locking knobs to open wire clamps.
3. Pull and turn the Weld/Open switch to the "Open" position.
4. Snip off each end of the wire using a pair of Wire Parters (included). Insert each wire end in groove until centered in the space between the 2 jaws. Lock wire into place one side at a time by pulling the locking knobs back into place. Ensure the wire butts are flat and evenly spaced.



IMPORTANT!
Ensure wire ends are evenly aligned prior to butt welding.

5. Turn the Weld/Open switch to the "Weld" position.
6. Turn switch on base unit to appropriate setting for wire size.
7. Press and hold green Cycle Start button on the front panel to weld the wire ends together (there will be a slight delay). If the Reset is popped out, push back in to weld.



CAUTION

Keep hands clear of butt welder components and wire when welding.

8. Open wire clamps by pulling down both locking knobs. Remove wire.



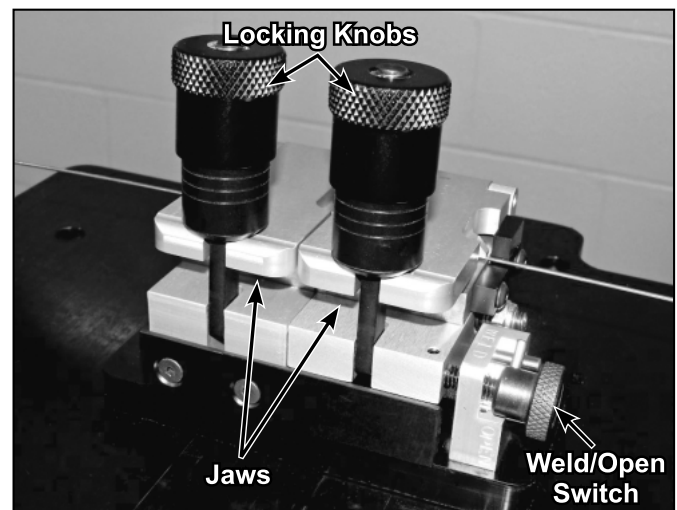
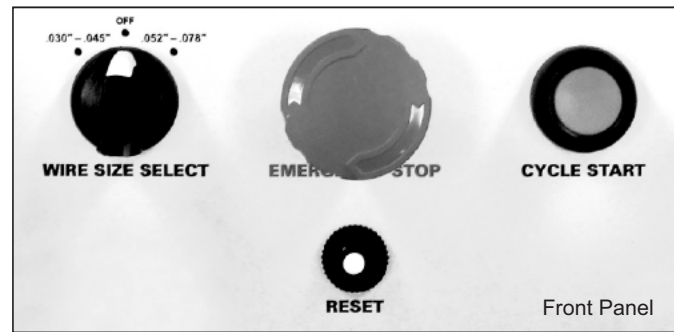
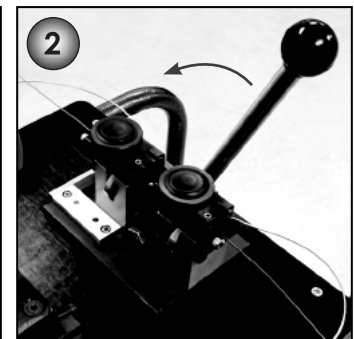
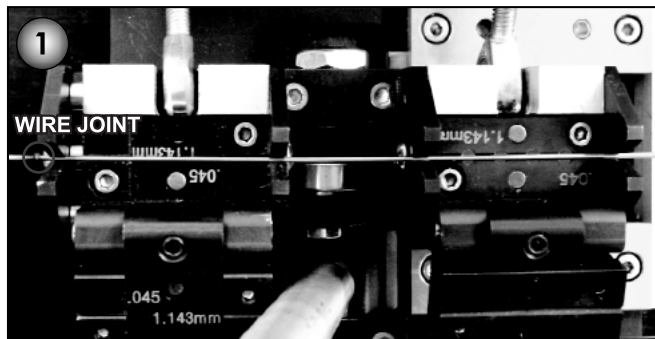
CAUTION

Wire may be hot!

9. Remove the burr in the wire joint using the optional Wire Sizer (see below) or other method of creating a smooth joint. Check the joint using the Wire Gage Block to ensure smooth wire feeding.
10. Insert wire onto pathway between the two wire packages. Repeat process when replacing empty boxes.

Burr Removal from Wire Joint using the Wire Sizer

To remove the burr in the wire joint, open clamps on the wire sizer and position wire as shown in step 1. The joint should be in the gap on the left side (circled). Close and tighten clamps. Pull the handle firmly to the right to remove the burr. Unlock the clamps and remove wire.



Butt Welder

ACCESSORIES

K3921-1 Docking Station Butt Welder

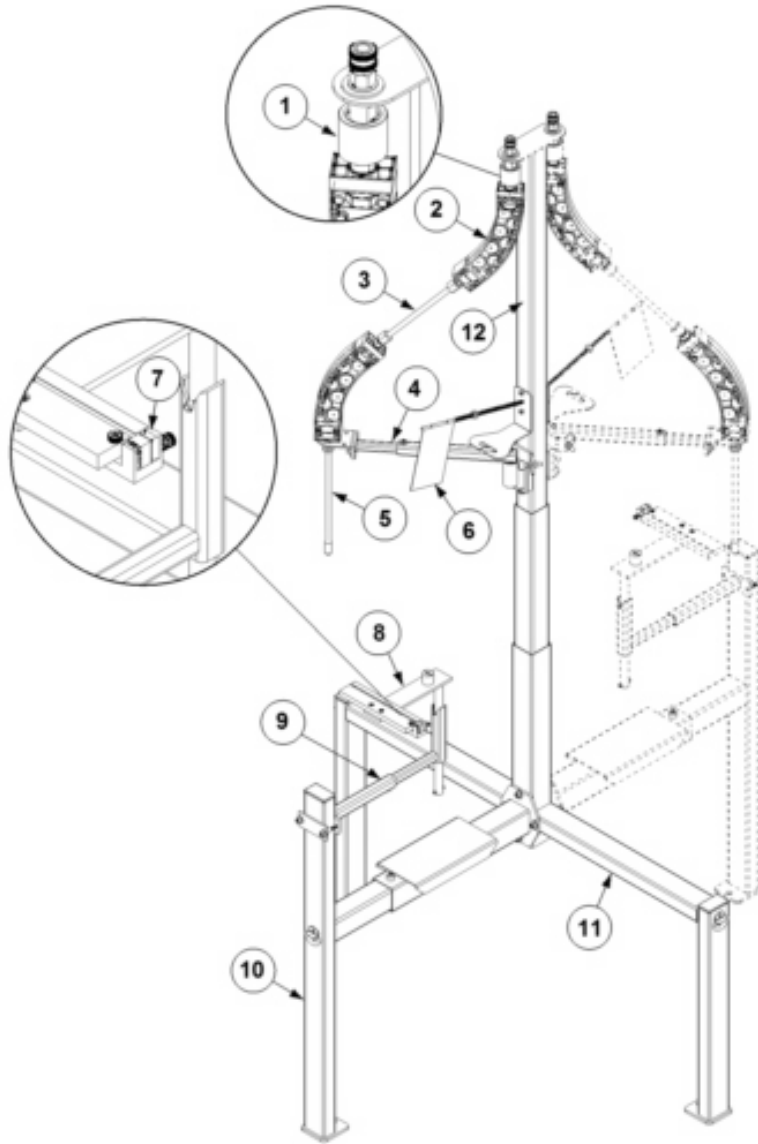
K3924-1 Portable Butt Welder

Infinity-Pak 2 Station - K3926-1

General Assembly

KEY	PART NUMBER	DESCRIPTION	QTY
	K3926-1	INFINITY-PAK 2 STATION	1
1	9SS30605-1	ROTARY HOUSING ASSEMBLY	2
2	9SS30605-2	45° WIRE GUIDE MODULE	1
3	9SS30605-3	EC-4 CONDUIT & CONNECTOR	1
4	9SS30605-4	SWING ARM ASSEMBLY	1
5	9SS30605-5	CONDUIT W/ INLET	1
6	9SS30605-6	FLAG ASSEMBLY	1
7	9SS30605-7	WIRE HOLD DOWN	1
8	9SS30605-8	BRIDGE ASSEMBLY	1
9	9SS30605-9	BRIDGE RECEIVER ASSEMBLY	1
10	9SS30605-10	FRONT LEG W/ SLEEVE	1
11	9SS30605-11	CENTER BASE FRAME	1
12	9SS30605-12	UPPER/CENTER TUBE WELDMENT	1
	9SS30605-13	6' TIE STRAPS	2

General Assembly



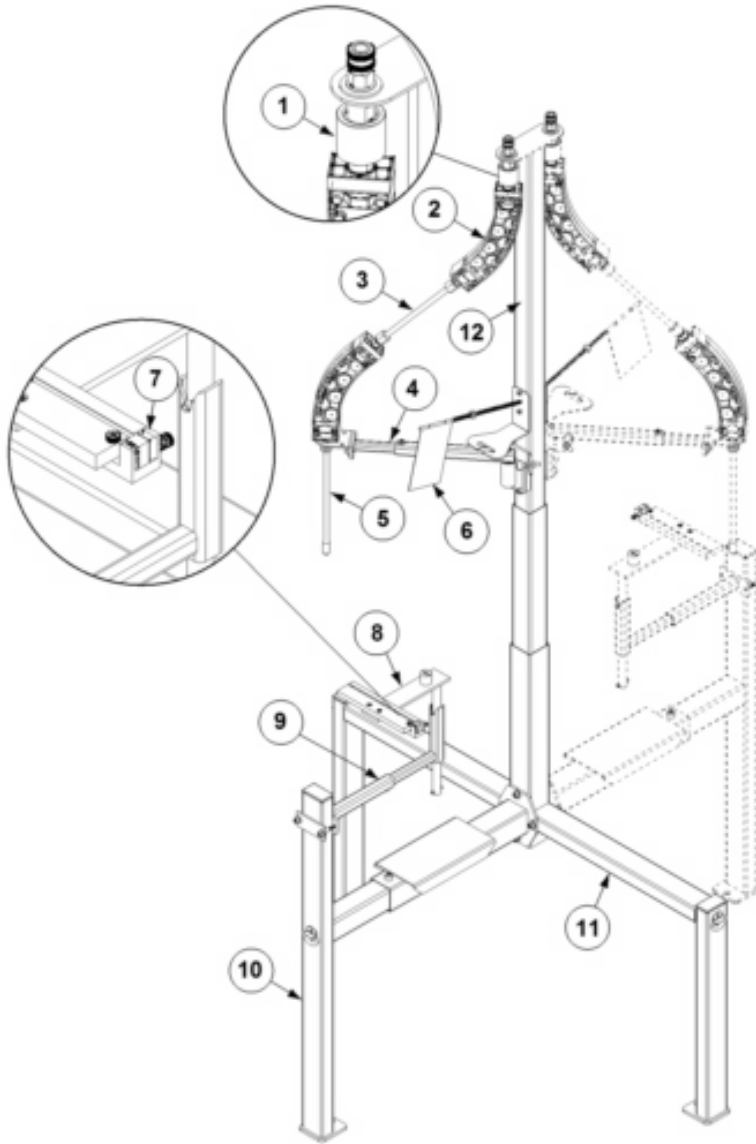
P-757-C.jpg

Infinity-Pak 4 Station - K3927-1

General Assembly

KEY	PART NUMBER	DESCRIPTION	QTY
	K3927-1	INFINITY-PAK 4 STATION	2
1	9SS30605-1	ROTARY HOUSING ASSEMBLY	4
2	9SS30605-2	45° WIRE GUIDE MODULE	2
3	9SS30605-3	EC-4 CONDUIT & CONNECTOR	2
4	9SS30605-4	SWING ARM ASSEMBLY	2
5	9SS30605-5	CONDUIT W/ INLET	2
6	9SS30605-6	FLAG ASSEMBLY	2
7	9SS30605-7	WIRE HOLD DOWN	2
8	9SS30605-8	BRIDGE ASSEMBLY	2
9	9SS30605-9	BRIDGE RECEIVER ASSEMBLY	2
10	9SS30605-10	FRONT LEG W/ SLEEVE	2
11	9SS30605-11	CENTER BASE FRAME	1
12	9SS30605-12	UPPER/CENTER TUBE WELDMENT	1
	9SS30605-13	6' TIE STRAPS	4

General Assembly



P-757-C.jpg



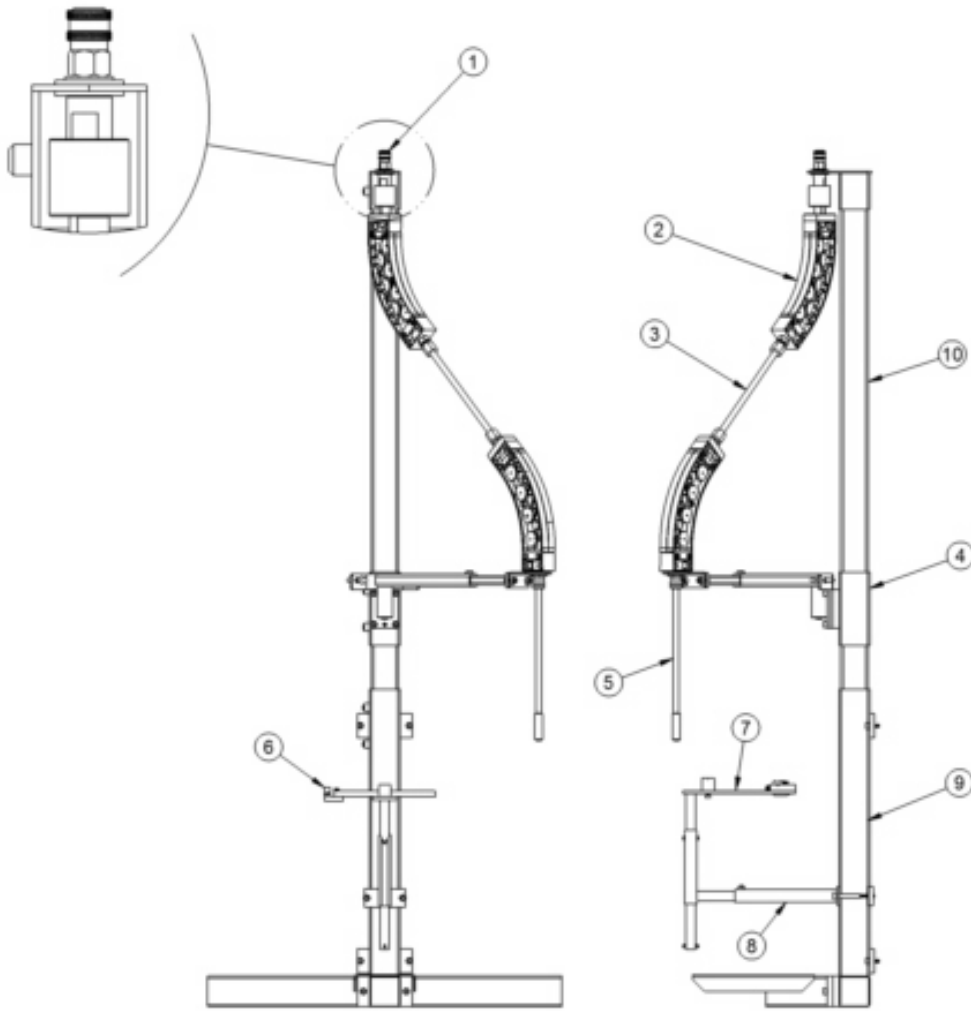
Service Navigator 2.0

Infinity-Pak Wall Mount - K4106-1

General Assembly

KEY	PART NUMBER	DESCRIPTION	QTY
	K4106-1	INFINITY-PAK WALL MOUNT	1
1	9SS30605-1	ROTARY HOUSING ASSEMBLY	1
2	9SS30605-2	45° WIRE GUIDE MODULE	2
3	9SS30605-3	EC-4 CONDUIT & CONNECTOR	1
4	9SS30605-15	SWING ARM ASSEMBLY	1
5	9SS30605-5	CONDUIT W/ INLET	1
6	9SS30605-7	WIRE HOLD DOWN	1
7	9SS30605-8	BRIDGE ASSEMBLY	1
8	9SS30605-9	BRIDGE RECEIVER ASSEMBLY	1
9	9SS30605-16	BASE	1
10	9SS30605-17	CENTER TUBE	1

General Assembly



P-757-D.jpg

WARNING	<ul style="list-style-type: none"> Do not touch electrically live parts or electrode with skin or wet clothing. Insulate yourself from work and ground. 	<ul style="list-style-type: none"> Keep flammable materials away. 	<ul style="list-style-type: none"> Wear eye, ear and body protection.
Spanish AVISO DE PRECAUCION	<ul style="list-style-type: none"> No toque las partes o los electrodos bajo carga con la piel o ropa mojada. Aíslese del trabajo y de la tierra. 	<ul style="list-style-type: none"> Mantenga el material combustible fuera del área de trabajo. 	<ul style="list-style-type: none"> Protéjase los ojos, los oídos y el cuerpo.
French ATTENTION	<ul style="list-style-type: none"> Ne laissez ni la peau ni des vêtements mouillés entrer en contact avec des pièces sous tension. Isolez-vous du travail et de la terre. 	<ul style="list-style-type: none"> Gardez à l'écart de tout matériel inflammable. 	<ul style="list-style-type: none"> Protégez vos yeux, vos oreilles et votre corps.
German WARNUNG	<ul style="list-style-type: none"> Berühren Sie keine stromführenden Teile oder Elektroden mit Ihrem Körper oder feuchter Kleidung! Isolieren Sie sich von den Elektroden und dem Erdboden! 	<ul style="list-style-type: none"> Entfernen Sie brennbares Material! 	<ul style="list-style-type: none"> Tragen Sie Augen-, Ohren- und Körperschutz!
Portuguese ATENÇÃO	<ul style="list-style-type: none"> Não toque partes elétricas e electrodos com a pele ou roupa molhada. Isole-se da peça e terra. 	<ul style="list-style-type: none"> Mantenha inflamáveis bem guardados. 	<ul style="list-style-type: none"> Use proteção para a vista, ouvido e corpo.
Japanese 注意事項	<ul style="list-style-type: none"> 通電中の電気部品、又は溶材にヒフやぬれた布で触れないこと。 施工物やアースから身体が絶縁されている様にして下さい。 	<ul style="list-style-type: none"> 燃えやすいものの側での溶接作業は絶対にしてはなりません。 	<ul style="list-style-type: none"> 目、耳及び身体に保護具をして下さい。
Chinese 警告	<ul style="list-style-type: none"> 皮肤或湿衣物切勿接触带电部件及焊条。 使你自己与地面和工件绝缘。 	<ul style="list-style-type: none"> 把一切易燃物品移离工作场所。 	<ul style="list-style-type: none"> 佩戴眼、耳及身体劳动保护用具。
Korean 위험	<ul style="list-style-type: none"> 전도체나 용접봉을 젖은 형갑 또는 피부로 절대 접촉치 마십시오. 모재와 접지를 접촉치 마십시오. 	<ul style="list-style-type: none"> 인화성 물질을 접근시키지 마십시오. 	<ul style="list-style-type: none"> 눈, 귀와 몸에 보호장구를 착용하십시오.
Arabic تحذير	<ul style="list-style-type: none"> لا تلمس الاجزاء التي يسري فيها التيار الكهربائي أو الألكترود بجسد الجسم أو بالملابس المبللة بالماء. ضع عازلا على جسمك خلال العمل. 	<ul style="list-style-type: none"> ضع المواد القابلة للاشتعال في مكان بعيد. 	<ul style="list-style-type: none"> ضع أدوات وملابس واقية على عينيك وأذنيك وجسمك.

READ AND UNDERSTAND THE MANUFACTURER'S INSTRUCTION FOR THIS EQUIPMENT AND THE CONSUMABLES TO BE USED AND FOLLOW YOUR EMPLOYER'S SAFETY PRACTICES.

SE RECOMIENDA LEER Y ENTENDER LAS INSTRUCCIONES DEL FABRICANTE PARA EL USO DE ESTE EQUIPO Y LOS CONSUMIBLES QUE VA A UTILIZAR, SIGA LAS MEDIDAS DE SEGURIDAD DE SU SUPERVISOR.

LISEZ ET COMPRENEZ LES INSTRUCTIONS DU FABRICANT EN CE QUI REGARDE CET EQUIPMENT ET LES PRODUITS A ETRE EMPLOYES ET SUIVEZ LES PROCEDURES DE SECURITE DE VOTRE EMPLOYEUR.

LESEN SIE UND BEFOLGEN SIE DIE BETRIEBSANLEITUNG DER ANLAGE UND DEN ELEKTRODENEINSATZ DES HERSTELLERS. DIE UNFALLVERHÜTUNGSVORSCHRIFTEN DES ARBEITGEBERS SIND EBENFALLS ZU BEACHTEN.

			
<ul style="list-style-type: none"> ● Keep your head out of fumes. ● Use ventilation or exhaust to remove fumes from breathing zone. 	<ul style="list-style-type: none"> ● Turn power off before servicing. 	<ul style="list-style-type: none"> ● Do not operate with panel open or guards off. 	WARNING
<ul style="list-style-type: none"> ● Los humos fuera de la zona de respiración. ● Mantenga la cabeza fuera de los humos. Utilice ventilación o aspiración para gases. 	<ul style="list-style-type: none"> ● Desconectar el cable de alimentación de poder de la máquina antes de iniciar cualquier servicio. 	<ul style="list-style-type: none"> ● No operar con panel abierto o guardas quitadas. 	Spanish AVISO DE PRECAUCION
<ul style="list-style-type: none"> ● Gardez la tête à l'écart des fumées. ● Utilisez un ventilateur ou un aspirateur pour ôter les fumées des zones de travail. 	<ul style="list-style-type: none"> ● Débranchez le courant avant l'entretien. 	<ul style="list-style-type: none"> ● N'opérez pas avec les panneaux ouverts ou avec les dispositifs de protection enlevés. 	French ATTENTION
<ul style="list-style-type: none"> ● Vermeiden Sie das Einatmen von Schweißrauch! ● Sorgen Sie für gute Be- und Entlüftung des Arbeitsplatzes! 	<ul style="list-style-type: none"> ● Strom vor Wartungsarbeiten abschalten! (Netzstrom völlig öffnen; Maschine anhalten!) 	<ul style="list-style-type: none"> ● Anlage nie ohne Schutzgehäuse oder Innenschutzverkleidung in Betrieb setzen! 	German WARNUNG
<ul style="list-style-type: none"> ● Mantenha seu rosto da fumaça. ● Use ventilação e exaustão para remover fumo da zona respiratória. 	<ul style="list-style-type: none"> ● Não opere com as tampas removidas. ● Desligue a corrente antes de fazer serviço. ● Não toque as partes elétricas nuas. 	<ul style="list-style-type: none"> ● Mantenha-se afastado das partes moventes. ● Não opere com os painéis abertos ou guardas removidas. 	Portuguese ATENÇÃO
<ul style="list-style-type: none"> ● ヒュームから頭を離すようにして下さい。 ● 換気や排煙に十分留意して下さい。 	<ul style="list-style-type: none"> ● メンテナンス・サービスに取りかかる際には、まず電源スイッチを必ず切して下さい。 	<ul style="list-style-type: none"> ● パネルやカバーを取り外したままで機械操作をしないで下さい。 	Japanese 注意事項
<ul style="list-style-type: none"> ● 頭部遠離煙霧。 ● 在呼吸區使用通風或排風器除煙。 	<ul style="list-style-type: none"> ● 維修前切斷電源。 	<ul style="list-style-type: none"> ● 儀表板打開或沒有安全罩時不準作業。 	Chinese 警告
<ul style="list-style-type: none"> ● 얼굴로부터 용접가스를 멀리하십시오. ● 호흡지역으로부터 용접가스를 제거하기 위해 가스제거기나 통풍기를 사용하십시오. 	<ul style="list-style-type: none"> ● 보수전에 전원을 차단하십시오. 	<ul style="list-style-type: none"> ● 판넬이 열린 상태로 작동치 마십시오. 	Korean 위험
<ul style="list-style-type: none"> ● ابعد رأسك بعيداً عن الدخان. ● استعمل التهوية أو جهاز ضغط الدخان للخارج لكي تبعد الدخان عن المنطقة التي تتنفس فيها. 	<ul style="list-style-type: none"> ● اقطع التيار الكهربائي قبل القيام بأية صيانة. 	<ul style="list-style-type: none"> ● لا تشغيل هذا الجهاز اذا كانت الاغطية الحديدية الواقية ليست عليه. 	Arabic تحذير

LEIA E COMPREENDA AS INSTRUÇÕES DO FABRICANTE PARA ESTE EQUIPAMENTO E AS PARTES DE USO, E SIGA AS PRÁTICAS DE SEGURANÇA DO EMPREGADOR.

使う機械や溶材のメーカーの指示書をよく読み、まず理解して下さい。そして貴社の安全規定に従って下さい。

請詳細閱讀並理解製造廠提供的說明以及應該使用的銀焊材料，並請遵守貴方的有關勞動保護規定。

이 제품에 동봉된 작업지침서를 숙지하시고 귀사의 작업자 안전수칙을 준수하시기 바랍니다.

اقرأ بتمعن وافهم تعليمات المصنع المنتج لهذه المعدات والمواد قبل استعمالها واتبع تعليمات الوقاية لصاحب العمل.

CUSTOMER ASSISTANCE POLICY

The business of The Lincoln Electric Company is manufacturing and selling high quality welding equipment, consumables, and cutting equipment. Our challenge is to meet the needs of our customers and to exceed their expectations. On occasion, purchasers may ask Lincoln Electric for advice or information about their use of our products. We respond to our customers based on the best information in our possession at that time. Lincoln Electric is not in a position to warrant or guarantee such advice, and assumes no liability, with respect to such information or advice. We expressly disclaim any warranty of any kind, including any warranty of fitness for any customer's particular purpose, with respect to such information or advice. As a matter of practical consideration, we also cannot assume any responsibility for updating or correcting any such information or advice once it has been given, nor does the provision of information or advice create, expand or alter any warranty with respect to the sale of our products.

Lincoln Electric is a responsive manufacturer, but the selection and use of specific products sold by Lincoln Electric is solely within the control of, and remains the sole responsibility of the customer. Many variables beyond the control of Lincoln Electric affect the results obtained in applying these types of fabrication methods and service requirements.

Subject to Change – This information is accurate to the best of our knowledge at the time of printing. Please refer to www.lincolnelectric.com for any updated information.



THE LINCOLN ELECTRIC COMPANY

22801 St. Clair Avenue • Cleveland, OH • 44117-1199 • U.S.A.
Phone: +1.216.481.8100 • www.lincolnelectric.com