

REPLACEMENT PARTS LIST  
MIG WELDER

**117-076,2145,83125,83126,20511, 125 GL/GS**

# 117-076,2145, 83125, 83126, 20511, 125 GL/GS

Item	Lincoln Stock #	Customer #	Description
1		<b>246-422-000</b>	Heat control switch
2	S18977-4	216-100-000	Fan motor
3	NLA	410-900-XXX	Front panel
4		541-057-000	Strain relief
5		238-223-666	Cable assy.
6	246-041-666	<b>246-107-000</b>	Knob
<b>7</b>	<b>238-592-000</b>	<b>238-592-000</b>	<b>6' mig gun (used on units built after 1-1-01, RED trigger)</b>
	NLA	238-567-666	6' mig gun (used on units built from 5-2-99 to 12-31-00, <b>BLACK</b> trigger)
	238-507-000	238-507-000	6' mig gun (used on units built before 5-2-99, <b>RED</b> trigger, gas diffuser has left-hand threads)
8	NLA	410-868-XXX	Control panel
9	880-460-666	880-418-666	Wire speed control
10	NLA	880-410-000	Transformer
11	NLA	410-865-XXX	Left side panel
12	NLA	312-295-666	Slide latch w/clip
13		<b>246-414-000</b>	Terminal block
14	880-406-001	880-406-666	Drive motor / gear box
		<b>310-187-000</b>	Steel drive roller, (0.024/0.030/0.035)
	880-427-666	880-427-666	Neoprene drive roller for aluminum
	S24355-6		Idle roller (C609Z)
	S24355-9		Wire feed tension knob (smaller)
	S24355-10		Wire feed tension spring
	334-627-000		Inlet Guide tube (cut to length (2.75"))
15	131-419-000	131-350-002	Tension kit

Item	Lincoln Stock #	Customer #	Description
16	312-076-666	312-076-666	Spindle
17	NLA	410-867-XXX	Center panel
18	880-402-666	880-402-666	Rectifier (includes 2 plates)
19	253-333-000	253-333-666	Push in union fitting (5/32")
20		248-327-000	Power cord
21		239-074-000	Strain relief
22		<b>312-296-666</b>	Handle
23	NLA	410-864-000	Right side panel
24	NLA	880-431-000	Base
25		<b>246-428-000,</b> 880-415-000	Thermo breaker

## Not Shown

26	334-468-666	334-468-666	Liner for mig gun with <b>RED</b> trigger
27	KP1937-3	334-476-666	Liner for mig gun with <b>BLACK</b> trigger
28	NLA	412-635-010	Tank bracket
29	<b>334-438-000</b>	<b>334-438-000</b>	<b>Preset Regulator w/o gauges</b>
30	334-460-001	334-460-001	Adjustable Regulator with gauges
31	S26399-28	059-217-040	84", 5/32" OD gas hose
32	KP11-25	43090, KP2039-1B1	0.025 contact tips
33	KP11-30	43100, KP2039-2B1	0.030 contact tips
34	334-203-000	43480	Steel welding nozzle
35	312-110-666	312-110-666	Wire spool adapter
36	239-292-666	239-010-102	Ground clamp
37	KH600	332-239-666	Helmet

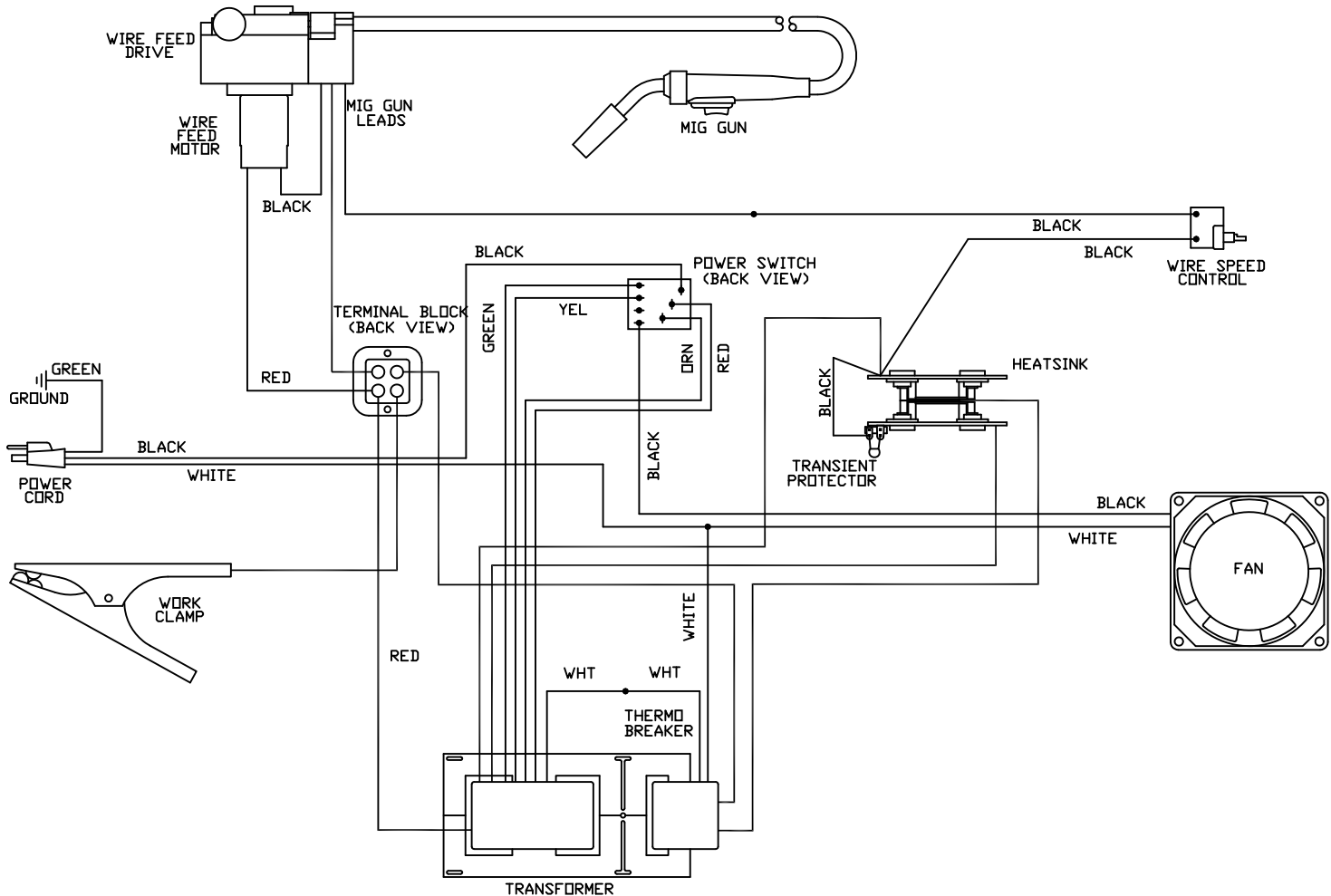
7/23/2009

Model	Primary Input	Input Plug	Duty Cycle at Rated Output
117-076	120V, 15a	15A	20%

Rated Output	Voltage Settings	Agency Listing	Output
90 amps	4	CSA	30-125 amps

# 117-076,2145,83125,83126,20511, 125 GL/GS

## WIRING DIAGRAM



117-076,2145,83125,83126,20511, 125 GL/GS

Note: Voltages are approximate

