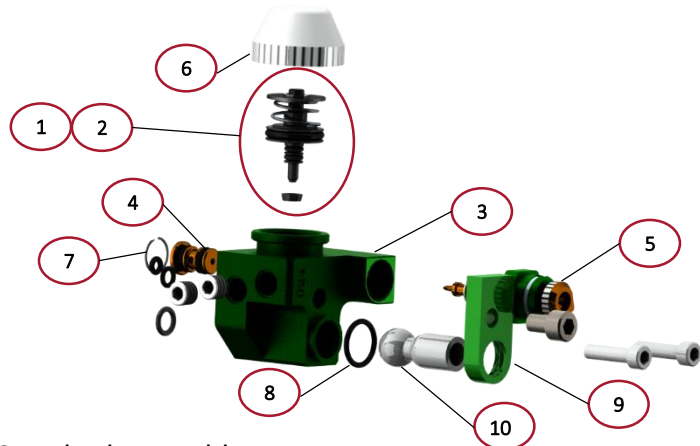


024 Spray Atomizer

Configurable Low Intensity Spray



Standard Assembly

REF #	DESCRIPTION	LEGACY P/N	A SERIES P/N
1	024 POPPET ASSEMBLY	06955-09	A4006808
2	024 REBUILD KIT	06955-07	
3	024 BODY	06955-01	A3031803
4	1.0 GPM MAX FLOW ORIFICE	06954-102A	A4005667
5	0-1.0 GPM ADJUSTABLE METER	06955-08	A4005681
6	024 POPPET CAP	06955-03	A3032177
7	MAX ORIFICE E CLIP RETAINER	45284	A2020940
8	2-014 VITON ORING	02733	A2023024-2-014
9	024 SPRAY TIP LOCKING CAP	06955-208	A3031804
10	MED SOLID CONE TIP	15810-03	A3031991

Specification

Application

- Die Matched Manifold

Body Material

- AL (Anodized)

Flow Rates (at 60 PSI)

- Air: Up to 11 CFM
- Liquid: 0-1.0 GPM

Filtration & Viscosity

- Liquid: 80 Mesh (200 Micron)
1000 cP (call for custom req.)

Order Configuration*

024 - 0 1
 A B C D E

A – BODY MATERIAL
 0 – Aluminum

B – MAXIMUM FLOW ORIFICE
 1 – 1.0 GPM MAX

C – ADJUSTABLE METER SCREW
 1 – 0-1.0 GPM MAX
 1A – .020 FIXED ORIFICE
 ...More Available

D – SPRAY TIPS (Diameter, SCFM Rating)
 0 – No Spray Tip (0, 0)
 1 – Hollow Cone (5", 8)
 2 – Solid Cone (8", 9)
 3 – Med Solid Cone (6", 6)
 4 – Large Solid Cone (6", 11)
 5 – Widening Cone (6", 4)
 6 – Tight Cone (4", 3)
 7 – Widening Fan (9", 2)
 8 – Narrow Fan (12", 3)
 9 – Wide Fan (27", 9)
 10 – Med Fan (16", 7)
 ...More Available

To Submit Orders
Email: sales@rimrockcorp.com
Phone: +1.614.471.5926



Lincoln Electric Automation Columbus
 1700 Jetway Blvd
 Columbus, OH, 43219