

BEVERAGE REGULATORS

PRIMARY AND SECONDARY PRODUCTS



Shown: CB2 3005225



Shown: CB1 3005216

KEY FEATURES

HARRIS® beverage gas regulators are designed to provide a constant gas delivery pressure of carbon dioxide and nitrogen to a variety of commercial and home beverage dispensing applications including but not limited to beer, soda, coffee and wine. HARRIS® is the oldest manufacturer of pressure regulation equipment in the USA.

The beverage regulators are ideally used for:

- » Home Hobbyist
- » Restaurants
- » Bar Service
- » Commercial Beverage Regulation

Processes »

Beer, Wine, Soda, Coffee

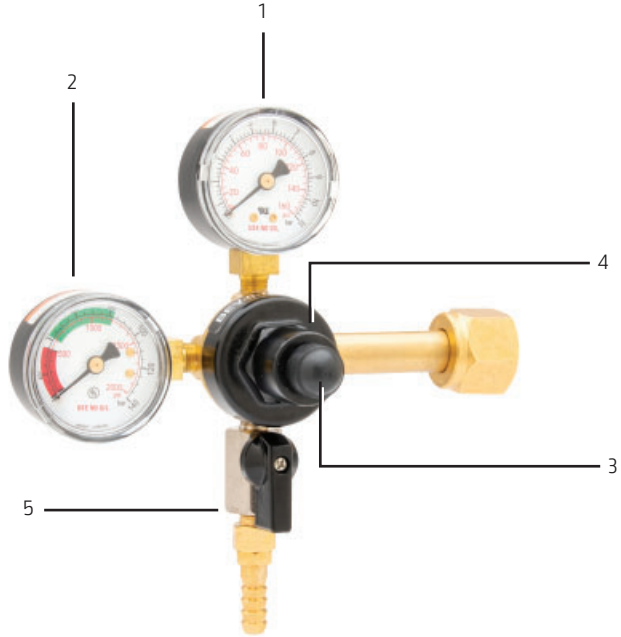


KEY FEATURES Continued

- » **7-Year manufacturer's warranty:**
Best in the beverage industry
- » **Meets and exceeds CGA E-4 standard for pressure regulators.**
- » **Encapsulated seat with 10 micron filter:**
Need explanation why
- » **Nylon reinforced neoprene diaphragm:** This needs and explanation.
- » **High flow rate for a wide variety of applications**
- » **Reverse flow check valve outlets on all models:** Prevents reverse flow of liquid
- » **Rear mounting capability:** easily install to walls and brackets
- » **100% Leak tested**

ALL PRIMARY AND SECONDARY REGULATORS FEATURE

1. Dual scale (kPa and PSI) gas delivery gauge.
2. Color-coded gas contents gauge for easy gas supply checks.
3. Tamper resistant screw with cap allows for presetting and securing gas delivery pressure.
4. Forged zinc bonnet and forged brass body to resist corrosion.
5. Barb fitting outlet with on/off valve for low pressure hose connections. 1/4" flare fittings are also available for rigid line installations.



CB2 models include 360° positionable stainless steel mounting brackets.

CB1 PRIMARY REGULATOR PRODUCT SPECIFICATIONS

Part Number	Gas Service	Delivery Pressure Range PSIG	Delivery Pressure Gauge PSIG	Supply Pressure Gauge PSIG	Inlet Fitting	Number of Regulators	Number of Outlets	Shut-Off Valve	Outlet Fitting	Typical Application
3005228	CO ₂	0-50	60	2000	CGA 320	1	1		1/4" Flare	Soda/Beer
3005216	CO ₂	0-120	160	2000	CGA 320	1	1		1/4" Flare	Soda
3005229	CO ₂	0-120	160	2000	CGA 320	2	2		1/4" Flare	Soda
3005230	CO ₂	0-50	60	Capped	CGA 320	1	1	X	5/16" Barb	Beer
3005231	CO ₂	0-50	60	2000	CGA 320	1	1	X	5/16" Barb	Beer
3005232	CO ₂	0-50	60	2000	CGA 320	2	2	X	5/16" Barb	Beer
3005233	CO ₂	0-50	60	2000	CGA 320	1	2	X		Beer
3005234	CO ₂	0-50	60	2000	CGA 320	1	1	X	3/8" Barb	Beer
3005217	CO ₂	0-120	160	2000	CGA 320	1	1	X	5/16" Barb	Beer
3005235	CO ₂	0-120	160	2000	CGA 320	1	1	X	3/8" Barb	Beer
3005236	CO ₂	0-120	160	2000	CGA 320	1	1	X	1/4" Barb	Beverage
3005237	N ₂ Mix	0-50	60	4000	CGA 580	1	1	X	5/16" Barb	Beer/Wine/Coffee
3005238	N ₂ Mix	0-50	60	4000	CGA 580	1	1	X	3/8" Barb	Beer/Wine/Coffee
3005239	N ₂ Mix	0-120	160	4000	CGA 580	1	1	X	5/16" Barb	Beer/Wine/Coffee
3005240	N ₂ Mix	0-120	160	4000	CGA 580	1	1	X	3/8" Barb	Beer/Wine/Coffee

CB2 PRIMARY REGULATOR PRODUCT SPECIFICATIONS

Part Number	Gas Service	Delivery Pressure Range PSIG	Delivery Pressure Gauge PSIG	Extension Port	Inlet Fitting	Number of Regulators	Number of Outlets	Shut-Off Valve	Outlet Fitting	Number of Brackets	Typical Application
3005220	CO ₂ & N ₂	0-50	60	1/4" Flare/Cap	1/4" Flare	1	1		1/4" Flare	1	Soda
3005221	CO ₂ & N ₂	0-120	160	1/4" Flare/Cap	1/4" Flare	1	1		1/4" Flare	1	Soda
3005222	CO ₂ & N ₂	0-120	160	1/4" Flare/Cap	1/4" Flare	2	2		1/4" Flare	2	Soda
3005223	CO ₂ & N ₂	0-50	60	Capped	5/16" Flare	1	1	X	5/16" Barb	1	Beer/Wine/Coffee
3005224	CO ₂ & N ₂	0-50	60	3/8" Barb	3/8" Barb	1	1	X	5/16" Barb	1	Beer/Wine/Coffee
3005241	CO ₂ & N ₂	0-50	60	Capped	5/16" Barb	2	2	X	5/16" Barb	2	Beer/Wine/Coffee
3005225	CO ₂ & N ₂	0-50	60	Capped	5/16" Barb	3	3	X	5/16" Barb	2	Beer/Wine/Coffee
3005242	CO ₂ & N ₂	0-50	60	Capped	5/16" Barb	4	4	X	5/16" Barb	2	Beer/Wine/Coffee

RECOMMENDED PARTS & ACCESSORIES



CONTENTS GAUGE 2000 PSI
Red/Green 1/8" NPT M
P/N.: 9017821

CONTENTS GAUGE 4000 PSI
Red/Green
1/8" NPT M
P/N.: 9017822



DELIVERY GAUGE
60 PSI Gauge
1/8" NPT M
P/N.: 9017818



DELIVERY GAUGE
160 PSI Gauge
1/8" NPT M
P/N.: 9017819



GAUGE GUARD
Fits 2" Contents and delivery gauges
P/N.: 9009931



MOUNTING KIT
For use with CB2 style regulators
P/N.: 9105055



CGA 320 CO2 KIT
Includes CGA 320 stem, nut and gasket
P/N.: 9105056

CGA 580 KIT
Includes CGA 580 stem and nut
P/N.: 9105057

ACCESSORIES

Product Name	Product Number	CB1	CB2
Replacement Parts			
Contents gauge - 2000 PSI Red/Green, 1/8 NPT M	9017821	•	•
Contents gauge - 4000 PSI Red/Green, 1/8 NPT M	9017822	•	•
Delivery gauge - 4000 PSI Red/Green, 1/8 NPT M	K2752-2	•	•
Delivery gauge - 4000 PSI Red/Green, 1/8 NPT M	K2752-6	•	•
Gauge guard - Fits 2 delivery and contents gauges	9009931	•	•
Mounting kit - For use with CB2 style regulators	9105055		•
Inlet stem CGA 320, Co2 kit	9105056	•	•
Inlet stem CGA 580, N2 kit	9105057	•	•

The operation of welding fume control equipment is affected by various factors including proper use and positioning of the equipment, maintenance of the equipment and the specific welding procedure and application involved. Worker exposure level should be checked upon installation and periodically thereafter to be certain it is within applicable OSHA PEL and ACGIH TLV limits.

Lincoln Electric Product Claim - Weld fume control products manufactured by The Lincoln Electric Company are designed to be utilized as an engineering safety control to aid in achieving adequate ventilation while conducting welding or it's allied processes. The operation of welding fume control equipment is affected by various factors including proper use and positioning of the equipment, and the specific welding procedure and application involved. When the equipment is used as designed - and when properly installed, operated and maintained - it can be a valuable and effective tool to help employers maintain adequate ventilation in the workplace. Lincoln Electric defines adequate ventilation as that which is required to maintain occupational exposure levels below the applicable exposure limits when sound work practices are utilized. Worker exposure level should be checked upon installation and periodically thereafter to be certain it is within applicable OSHA PEL and ACGIH TLV limits.

CUSTOMER ASSISTANCE POLICY

The business of The Lincoln Electric Company® is manufacturing and selling high quality welding equipment, consumables, and cutting equipment. Our challenge is to meet the needs of our customers and to exceed their expectations. On occasion, purchasers may ask Lincoln Electric for information or advice about their use of our products. Our employees respond to inquiries to the best of their ability based on information provided to them by the customers and the knowledge they may have concerning the application. Our employees, however, are not in a position to verify the information provided or to evaluate the engineering requirements for the particular weldment. Accordingly, Lincoln Electric does not warrant or guarantee or assume any liability with respect to such information or advice. Moreover, the provision of such information or advice does not create, expand, or alter any warranty on our products. Any express or implied warranty that might arise from the information or advice, including any implied warranty of merchantability or any warranty of fitness for any customers' particular purpose is specifically disclaimed.

Lincoln Electric is a responsive manufacturer, but the selection and use of specific products sold by Lincoln Electric is solely within the control of, and remains the sole responsibility of the customer. Many variables beyond the control of Lincoln Electric affect the results obtained in applying these types of fabrication methods and service requirements.

Subject to Change – This information is accurate to the best of our knowledge at the time of printing. Please refer to www.lincolnelectric.com for any updated information.