



SAF-FRO

Digitize your welding activities
INDUSTRY 4.0



SUPERVISING
WELDING
ADMINISTRATOR
NETWORK

SWAN

SUPERVISING WELDING ADMINISTRATOR NETWORK

SWAN is a range of software designed to **improve your profitability** and **control your welding activities** by ensuring proper design, production control, and weld traceability of your installations.



Before welding

- Prepare WPQR/WPS
- Welding list
- Define welding catalogue
- Edit welding book
- Define part sketch
- Ensure equipment calibration

During welding

- Follow-up production
- Assign qualified welders
- Automatic configuration of machine settings for each weld bead

After welding

- Weld record status
- Analyze operation for improvement
- Build your verification dashboard
- Manufacturer's folder for weld data and part assemblies

Questions you will never ask yourself anymore:

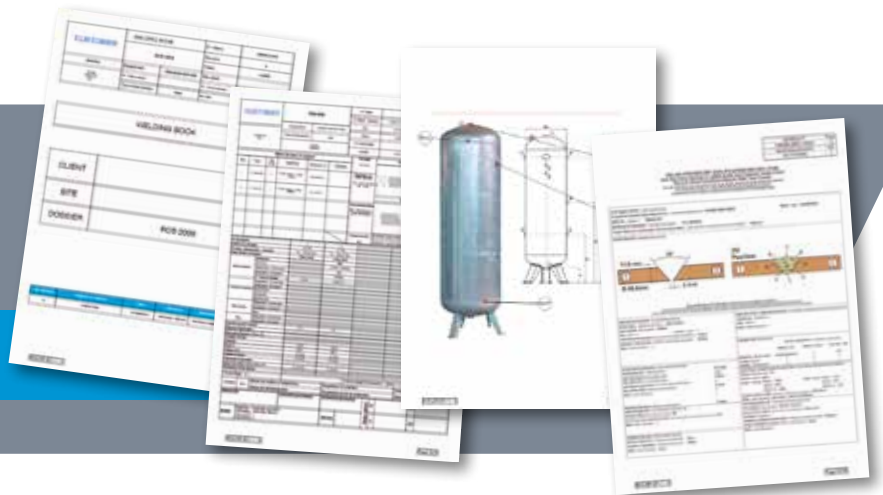
- Are the welder's qualifications still valid?
- What was the last consumables batch used?
- How can I quickly issue the welding book the customer requires?
- Are the WPS well respected during production?
- Did we miss some welds?

Key benefits

- Manage WPS/WPQR records, ensure compliance to latest norms and standards (ASME & EN)
- Manage welder qualifications, machine calibrations, and service records
- Reduce your manual documentation work by up to 40%
- Create Weld Books for production and quality, identify weld bead placement in assemblies
- Automatically configure the welding machine for each weld and record verification data in weld records
- Manage weld controls (Visual, Xray, spectro, Ultrasound, etc...)

Your Welding Book ready in a few clicks

To order: Consult us



Main features



	SWAN CLOUD	SWAN CLOUD PREMIUM
Operating mode	Cloud	Cloud + power source
Data transmission	LAN, WIFI	LAN, WIFI
License mode	Yearly	Yearly
Weld subscription		
<ul style="list-style-type: none"> Automatic sending of welding parameters to the power source 		✓
<ul style="list-style-type: none"> Identification of weld beads from pictures 	✓	✓
<ul style="list-style-type: none"> Follow the weld bead status At any moment, thanks to the interactive dashboard, you get the weld bead status. You can know if it has been carried out or if you are late in the production plan. 	Manual	Automatic
<ul style="list-style-type: none"> Welders qualifications management You have the possibility to use filters in order to find the qualified welders. In the same time, you can have a look at the welder qualification date in order to plan training if needed. 	✓	✓
Production follow-up		
<ul style="list-style-type: none"> Consumables & material certification 	✓	✓
<ul style="list-style-type: none"> Management of calibration, preventive maintenance, etc... 		✓
<ul style="list-style-type: none"> User rights permissions 	✓	✓
<ul style="list-style-type: none"> Non conformity follow-up Alarms are configurable to alert you to non-conforming welds. 	✓	✓
<ul style="list-style-type: none"> Controls management Thanks to the integrated dashboard, you get the controls status (to do, done, compliant, etc.). Each collaborator can directly manage the actions they have to lead: weld bead to do for the welders, non compliant weld beads for the production responsible... 	Manual	Automatic
Traceability		
<ul style="list-style-type: none"> Welding curves 		✓
<ul style="list-style-type: none"> Fault tracking 		✓
<ul style="list-style-type: none"> Fault history 		✓
Documentation		
<ul style="list-style-type: none"> Smart WPQR / WPS management SWAN CLOUD allows you to find quickly the WPS & WPQR related to the parts you need to produce. 	✓	✓
<ul style="list-style-type: none"> Automatic generation of quality documentation Compiled and automatically generated quality documentation: welding book, customer folder, certifications... These documents make the customer validation easier. 	✓	✓
<ul style="list-style-type: none"> Centralized documentation Thanks to the dynamic summary, you can add any attachment to get all the information in the same place. 	✓	✓
<ul style="list-style-type: none"> Quick answer to tender In some clicks, carry out your welding book including all relevant files (WQ, WPQR, WPS, traceability controls, etc.) according to the customization you want in accordance with the code or customer request. 	✓	✓
Connected to your power sources		
SWAN CLOUD can be connected to the power source (DIGIWAVE III) and use all welding data. From the interface, you can send your work order including the weld bead to do list and receive from the power source a precise follow-up. You can also add a traceability control to be sure that all weld beads have correctly been carried out.		✓
Options (consult us)		
<ul style="list-style-type: none"> Mobile applications 	✓	✓
<ul style="list-style-type: none"> Documentation customization 	✓	✓
<ul style="list-style-type: none"> Database migration 	✓	✓
<ul style="list-style-type: none"> Connection with internal ERP 	✓	✓
<ul style="list-style-type: none"> On-premise options 	✓	Consult us

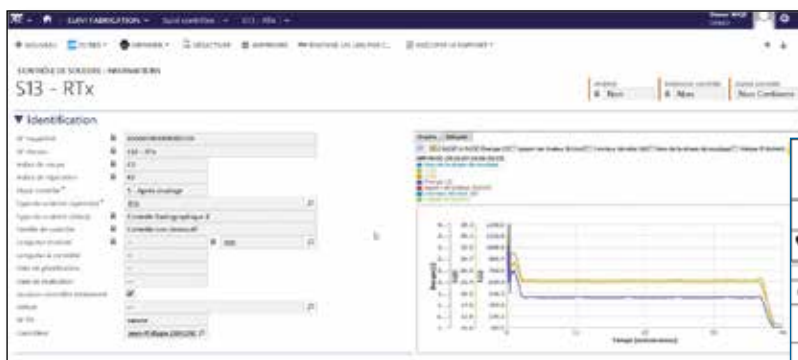
Whatever your function **SWAN** is your solution

Discover what you can manage with **SWAN solutions**

You are...

...SWAN offers you

...WELDING ENGINEER



- WQPR & WPS management
- Graphical view of welding activities
- Automatic identification of defective weld beads

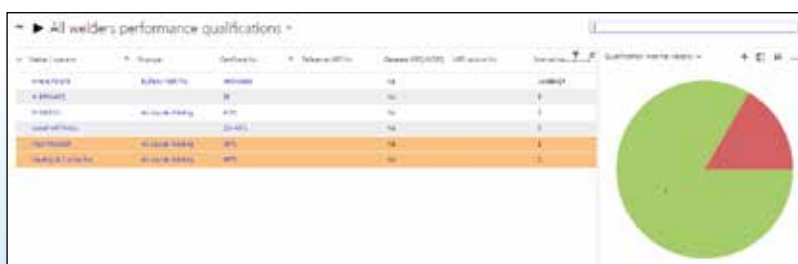
SAF-FRO		Platforme (Schweiss)		WELDING PROCEDURE SPECIFICATIONS (EN ISO 15609 - 1 : 2005)	
DMOS N° :		1000001 - Rev.1		QMOS N° :	
Métal de base et support			Process		Préparation de l'assemblage
Rep.	Type	Gr. B-Cp	Matériau	Epaisseur (E)	Diamètre
1	2-Flux. 016	1.1	NF EN 10225 - 2 2005 - P235GH	De 1 à 20 mm	
2	2-Flux. 016	0.1	EN 10025 - 2 2004 - S235JR	De 1 à 20 mm	
			Type d'assemblage		Répartition des passes
			F01 - Soudeur, engins et poste de soudage		
			Support acier		Diamètre assemblage
			Non		De 1 à 20 mm
					Epaisseur assemblage
					De 1 à 20 mm

...PRODUCTION MANAGER



- Dashboard for easy production tracking
- Welder qualification management
- Easy view on the remaining work
- Reduction of manual work

...QUALITY MANAGER



- Customized quality reports
- Failure rate data
- Automatic generation of quality documentation

SOLUTIONS INTERACTIVE DOCUMENTATION CONNECTIVITY

SWAN

INDUSTRY 4.0 TRACEABILITY COMPLIANCE MONITORING DIGITALIZATION PREMIUM DIGITAL SOLUTIONS

CLOUD

You are...

...SWAN offers you

...MAINTENANCE MANAGER



- Fleet management
- Calibration
- Online error detection
- Maintenance plans based on use rates and historical performance

...WELDER

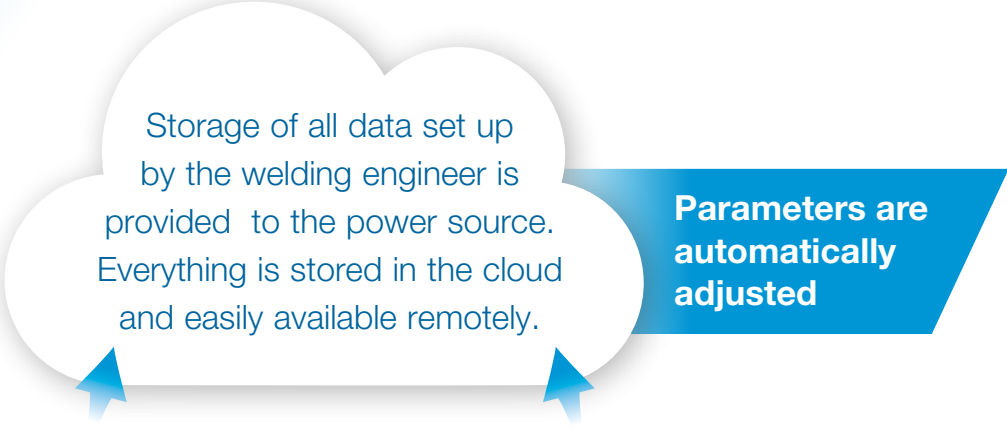


- Automatic parameters setup
- Ensure Right welding parameters
- Ensure no missing welds
- High Reduction of documentation tasks

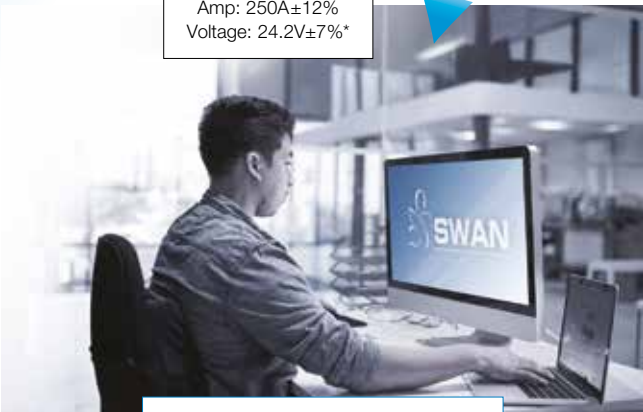
Tablet Viewer
 For an easy & comfortable supervision. You can have an access of your database through the SWAN or SWAN Cloud viewer.



Wherever you are, manage your welding activities and receive real-time production data.



WPS >> Part 1
Amp: 250A±12%
Voltage: 24.2V±7%*



Welding engineer

Login at SWAN Cloud

PASSWORD

The welding engineer can manage and analyze welding processes from the computer:

- WPS & WPQR
- Data Monitoring
- Setup welder restrictions

CONFIDENTIALITY?

Because we know that your welding expertise and knowledge are confidential...

SWAN CLOUD is including a highly secure encrypted system based on open SSL device.

Are you or your customers are working for military, nuclear, or automotive segments?

All data managed by SWAN CLOUD are completely secure.

You can also decide if the servers location in order to keep and ensure your data migration under your local compliancy and law.

Be confident: everything is under control with SWAN CLOUD.

WPS >> Part 1
Amp: 250A±12%
Voltage: 24.2V±7%*



Welder

Login at power source

PASSWORD

or



The welder can work with authorized welding parameters which are linked to the WPS only.

After welding the power source will automatically send the results to Swan Cloud.





Solution Design Process

...Before deciding we analyze your needs and arrange a trial period

DISCOVER

Get a demonstration to discover the endless possibilities:

- Web demo
- Demo on site
- Demo at Lincoln Electric

IDENTIFY

We analyze your needs, with you and a team of specialists, taking into account:

- We analyse your process and fill blank is needs
- Your way to work
- Your needs

TRIAL *(Optional)*

Go with a trial in order to be sure the system answer to all your needs.

LICENSE

With your yearly license purchase we provide:

- Solution setup
- Management of access rights
- Platform access
- Software updates
- Permanent support

TRAINING *(Optional)*

Be trained on the system:

- E-learning
- At our facilities
- Personalized

Ordering Part Number

	Reference
SWAN CLOUD license pack (1-3)	W000254356
SWAN CLOUD license pack (4-8)	W000404392
SWAN CLOUD license pack (9 and more)	W000404393
SWAN CLOUD PREMIUM license pack (1-3)	W000404394
SWAN CLOUD PREMIUM license pack (4-8)	W000404396
SWAN CLOUD PREMIUM license pack (9 and more)	W000404395

	Reference
Training SWAN CLOUD	W000404388
Training DIGIWAVE III	W000404384
Wifi Option DIGIWAVE III	W000404389



www.saf-fro.com

CUSTOMER ASSISTANCE POLICY

The business of Lincoln Electric is manufacturing and selling high quality welding equipment, consumables, and cutting equipment. Our challenge is to meet the needs of our customers and to exceed their expectations. On occasion, purchasers may ask Lincoln Electric for information or advice about their use of our products. Our employees respond to inquiries to the best of their ability based on information provided to them by the customers and the knowledge they may have concerning the application. Our employees, however, are not in a position to verify the information provided or to evaluate the engineering requirements for the particular weldment. Accordingly, Lincoln Electric does not warrant or guarantee or assume any liability with respect to such information or advice. Moreover, the provision of such information or advice does not create, expand, or alter any warranty on our products. Any express or implied warranty that might arise from the information or advice, including any implied warranty of merchantability or any warranty of fitness for any customers' particular purpose is specifically disclaimed.

Lincoln Electric is a responsive manufacturer, but the selection and use of specific products sold by Lincoln Electric is solely within the control of, and remains the sole responsibility of the customer. Many variables beyond the control of Lincoln Electric affect the results obtained in applying these types of fabrication methods and service requirements.

Subject to Change – This information is accurate to the best of our knowledge at the time of printing. Please refer to www.lincolnelectriceurope.com for any updated information.