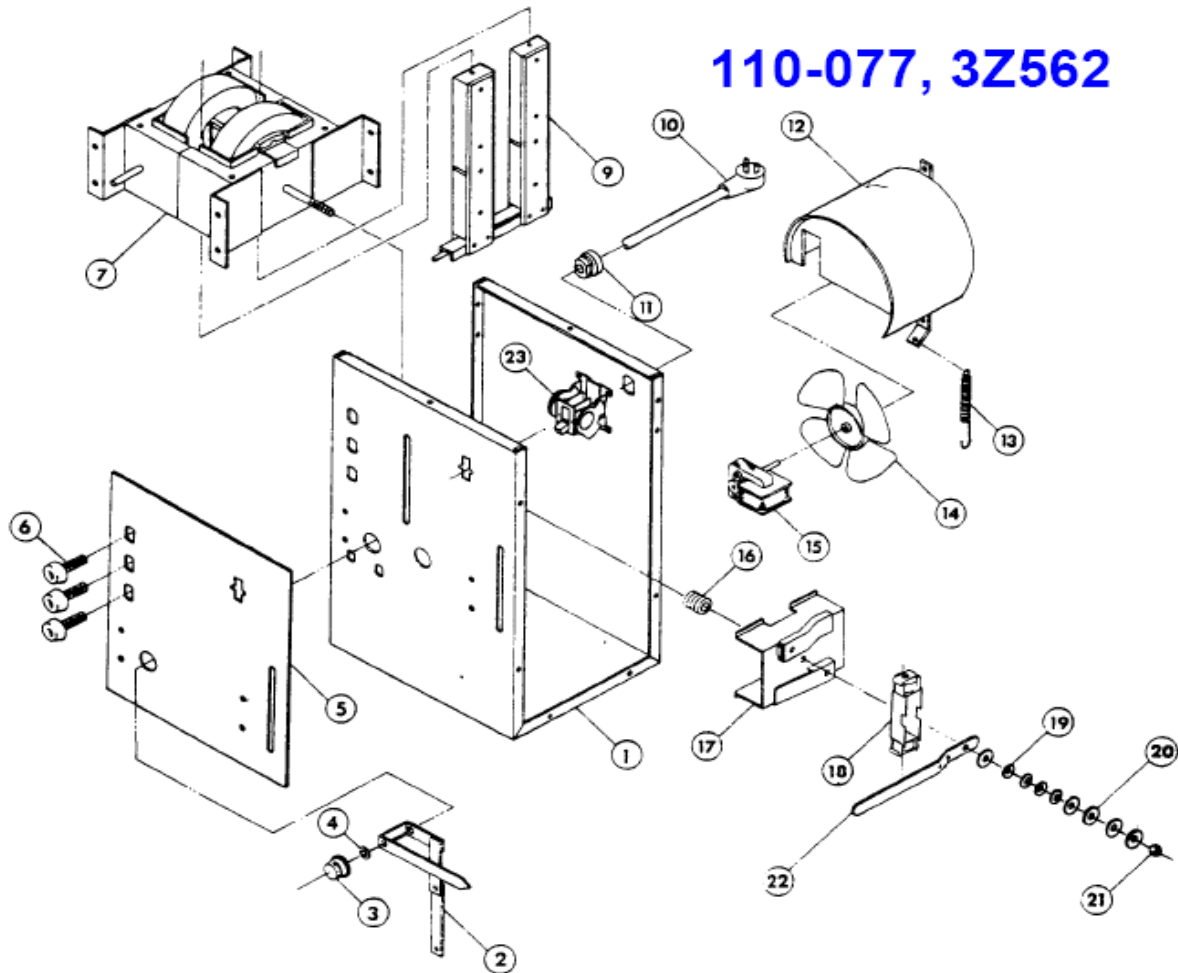


110-077, 3Z562



Item	Lincoln Stock #	Customer #	Description
1		410-165-100	Base
2		860-124-000	Linkage assy.
3		541-048-000	Hub
4		068-011-000	Push nut
5		711-100-110	Dial plate
6	312-045-666	312-028-100	Receptacle assy.
7		860-129-888	Transformer
9		860-121-000	Shunt
10		218-089-000	Power cord
11		541-019-000	Strain relief
12		860-117-000	Fan baffle assy.
13		330-016-000	Spring
14	316-007-300	316-007-000	Fan blade
15	216-086-666	216-034-100	Fan motor
16		310-060-000	Counter spring
17		860-118-100	Shunt clamp assy.
18		860-119-000	Clamp roller assy.
19		330-017-000	Spring washer
20		311-085-000	Thrust washer
21		069-010-000	Locking hex nut, 3/8-16
22		310-084-000	Clamp handle
23	216-010-666	216-010-000	Power switch

Not Shown

24		410-164-100	Case wrapper
25		238-009-500	Ground cable (#3, 12') with clamp & plug
		238-085-500	Electrode cable (#3, 18') with holder & plug

812-045-000 3/76

6/26/2008

Model	Primary Input	AC Plug	Output
110-077	230V, 50 amp	Nema 6-50P	295 amps ac