

# BEVERAGE GAS REGULATORS

## PRIMARY AND SECONDARY



Shown: Primary Regulator 3005216



Shown: Secondary Regulator 3005225

## KEY FEATURES

HARRIS® beverage gas regulators are designed to provide a constant gas delivery pressure of carbon dioxide and nitrogen to a variety of commercial and home beverage dispensing applications including, but not limited to beer, soda, coffee and wine. HARRIS® is the oldest manufacturer of pressure regulation equipment in the USA.

The beverage regulators are ideally used for:

- » Restaurants
- » Bar Service
- » Commercial Beverage
- » Home Hobbyist

### Processes »

Beer, Wine, Soda, Coffee



## KEY FEATURES Continued

- » **7-Year manufacturer's warranty:**  
Best in the beverage industry
- » **CGA E-4:** Meets and exceeds industry standard
- » **Encapsulated seat with 10 micron filter:**  
Prevents unwanted debris from entering regulator and contaminating downstream processes
- » **Neoprene diaphragm:** Ideal material to hold and calibrate precise delivery pressure
- » **High flow rate for a wide variety of applications**
- » **Reverse flow check valve outlets on all models:** Prevents reverse flow of liquid
- » **Rear mounting capability:** Easily install to walls and brackets
- » **100% Leak tested**

## PRIMARY VS. SECONDARY REGULATORS

### PRIMARY REGULATORS

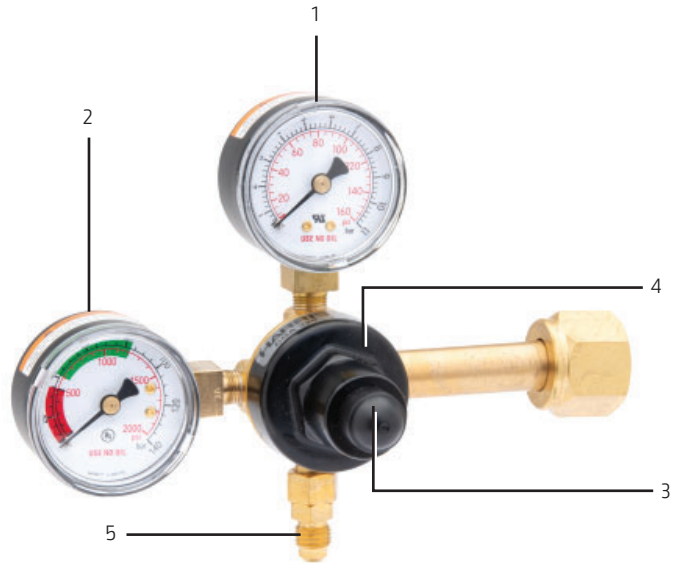
Include a cylinder connection fitting [CGA] with 1 or 2 regulator bodies with independent pressure control.

### SECONDARY REGULATORS

A manifold of up to 4 final line regulators installed closest to the beverage dispensing equipment for precise delivery pressure.

## REGULATORS FEATURE

1. Dual scale (kPa and PSI) gas delivery gauge.
2. Color-coded gas contents gauge for easy gas supply checks.
3. Tamper resistant screw with cap allows for presetting and securing gas delivery pressure.
4. Forged zinc bonnet and forged brass body to resist corrosion.
5. Available with barbed outlet fitting, on/off valve for low pressure hose connections. A 1/4" flare fittings (as shown) is also available for rigid line installations.



*Secondary models include 360° positionable stainless steel mounting brackets.*

**PRIMARY REGULATOR PRODUCT SPECIFICATIONS**

Part Number	Gas Service	Delivery Pressure Range PSIG	Delivery Pressure Gauge PSIG	Supply Pressure Gauge PSIG	Inlet Fitting	Number of Regulators	Number of Outlets	Shut-Off Valve	Outlet Fitting	Typical Application
3005228	CO <sub>2</sub>	0-50	60	2000	CGA 320	1	1		1/4" Flare	Beer
3005216	CO <sub>2</sub>	0-120	160	2000	CGA 320	1	1		1/4" Flare	Soda
3005229	CO <sub>2</sub>	0-120	160	2000	CGA 320	2	2		1/4" Flare	Soda
3005230	CO <sub>2</sub>	0-50	60	2000	CGA 320	1	1	X	5/16" Barb	Beer
3005231	CO <sub>2</sub>	0-50	60	Capped	CGA 320	1	1	X	5/16" Barb	Beer
3005234	CO <sub>2</sub>	0-50	60	2000	CGA 320	1	1	X	3/8" Barb	Beer
3005217	CO <sub>2</sub>	0-120	160	2000	CGA 320	1	1	X	5/16" Barb	Beer
3005235	CO <sub>2</sub>	0-120	160	2000	CGA 320	1	1	X	3/8" Barb	Beer
3005236	CO <sub>2</sub>	0-120	160	2000	CGA 320	1	1	X	1/4" Barb	Beverage
3005237	N <sub>2</sub> Mix	0-50	60	4000	CGA 580	1	1	X	5/16" Barb	Beer/Wine/Coffee
3005238	N <sub>2</sub> Mix	0-50	60	4000	CGA 580	1	1	X	3/8" Barb	Beer/Wine/Coffee
3005239	N <sub>2</sub> Mix	0-120	160	4000	CGA 580	1	1	X	5/16" Barb	Beer/Wine/Coffee
3005240	N <sub>2</sub> Mix	0-120	160	4000	CGA 580	1	1	X	3/8" Barb	Beer/Wine/Coffee

**SECONDARY REGULATOR PRODUCT SPECIFICATIONS**

Part Number	Gas Service	Delivery Pressure Range PSIG	Delivery Pressure Gauge PSIG	Extension Port	Inlet Fitting	Number of Regulators	Number of Outlets	Shut-Off Valve	Outlet Fitting	Number of Brackets	Typical Application
3005220	CO <sub>2</sub> & N <sub>2</sub>	0-50	60	1/4" Flare/Cap	1/4" Flare	1	1		1/4" Flare	1	Soda
3005221	CO <sub>2</sub> & N <sub>2</sub>	0-120	160	1/4" Flare/Cap	1/4" Flare	1	1		1/4" Flare	1	Soda
3005242	CO <sub>2</sub> & N <sub>2</sub>	0-50	60	Capped	5/16" Barb	4	4	X	5/16" Barb	2	Beer/Wine/Coffee

## ACCESSORIES & REPLACEMENT PARTS



**CONTENTS GAUGE 2000 PSI**  
Red/Green 1/8" NPT M  
P/N.: 9017821



**GAUGE GUARD**  
Fits 2" Contents and delivery gauges  
P/N.: 9009931



**CONTENTS GAUGE 4000 PSI**  
Red/Green  
1/8" NPT M  
P/N.: 9017822



**MOUNTING KIT**  
For replacement on primary and secondary style regulators  
P/N.: 9105055



**DELIVERY GAUGE**  
60 PSI Gauge  
1/8" NPT M  
P/N.: 9017818



**CGA 320 CO2 KIT**  
Includes CGA 320 stem, nut and gasket  
P/N.: 9105056



**DELIVERY GAUGE**  
160 PSI Gauge  
1/8" NPT M  
P/N.: 9017819



**CGA 580 KIT**  
Includes CGA 580 stem and nut  
P/N.: 9105057

## REPLACEMENT PARTS

Product Name	Product Number	Primary	Secondary
Contents gauge - 2000 PSI Red/Green, 1/8" NPT M	9017821	•	
Contents gauge - 4000 PSI Red/Green, 1/8" NPT M	9017822	•	
Delivery gauge - 60 PSI Red/Green, 1/8" NPT M	9001718	•	•
Delivery gauge - 160 PSI Red/Green, 1/8" NPT M	9001719	•	•
Mounting kit	9105055	•	•
Inlet stem CGA 320, Co2 kit	9105056	•	
Inlet stem CGA 580, N2 kit	9105057	•	

## ACCESSORIES

Gauge guard - Fits 2 delivery and contents gauges	9009931	•	•
---	---------	---	---

## CUSTOMER ASSISTANCE POLICY

The business of The Lincoln Electric Company® is manufacturing and selling high quality welding equipment, consumables, and cutting equipment. Our challenge is to meet the needs of our customers and to exceed their expectations. On occasion, purchasers may ask Lincoln Electric for information or advice about their use of our products. Our employees respond to inquiries to the best of their ability based on information provided to them by the customers and the knowledge they may have concerning the application. Our employees, however, are not in a position to verify the information provided or to evaluate the engineering requirements for the particular weldment. Accordingly, Lincoln Electric does not warrant or guarantee or assume any liability with respect to such information or advice. Moreover, the provision of such information or advice does not create, expand, or alter any warranty on our products. Any express or implied warranty that might arise from the information or advice, including any implied warranty of merchantability or any warranty of fitness for any customers' particular purpose is specifically disclaimed.

Lincoln Electric is a responsive manufacturer, but the selection and use of specific products sold by Lincoln Electric is solely within the control of, and remains the sole responsibility of the customer. Many variables beyond the control of Lincoln Electric affect the results obtained in applying these types of fabrication methods and service requirements.

Subject to Change – This information is accurate to the best of our knowledge at the time of printing. Please refer to [www.lincolnelectric.com](http://www.lincolnelectric.com) for any updated information.

**Harris Products Group**  
4501 Quality Place, OH 45040 · U.S.A.

Customer Service: 1-800-733-4043  
[hpgcustserv@lincolnelectric.com](mailto:hpgcustserv@lincolnelectric.com)  
[www.harrisproductsgroup.com](http://www.harrisproductsgroup.com)