

FUME DOESN'T STAND A CHANCE

Prism® Wall Mount Extraction Units



Shown: Prism Wall Mount with Mechanized Cleaning dual arm, Prism Wall Mount 5-8 foot Telescopic Counter-Weight Extraction Arms and Prism 2400 Fans (also available: Prism Wall Mount Single and Dual Arms)

Prism Wall Mount Welding Fume Extractor

The Prism Wall Mount and Prism Wall Mount with Mechanized Cleaning units are stationary, wall-mounted extraction systems intended for light to medium duty, and heavy duty extraction and filtration. These fume extractors are designed for facilities with fixed work stations and limited floor space.

Prism Wall Mount:

- ▶ Generously Sized Disposable Filter
- ▶ Single and Dual Arm Capability with Optional Extended Reach up to 27 ft.
- ▶ Generous Airflow: 735 CFM with Prism Flexible 10 ft. or 13 ft. Extraction Arms and Prism 2400 Fan; 1,200 CFM with two Prism 2400 Fans in a Dual Arm Configuration
- ▶ Integrated Spark Arrestor

Prism Wall Mount with Mechanized Cleaning:

- ▶ Automatic Filter Cleaning Cuts Down on Filter Replacement Costs and System Maintenance
- ▶ Single and Dual Arm Capability with Optional Extended Reach up to 27 ft.
- ▶ Generous Airflow: 735 CFM with Prism Wall Mount Flexible 10 ft. or 13 ft. Extraction Arms and Prism 2400 Fan; 1,200 CFM with two Prism 2400 Fans in a Dual Arm Configuration
- ▶ Front Loading Filters Along with Integrated Spark Arrestor

Processes »

Stick (Prism Wall Mount for Light Duty Only), TIG, MIG, Flux-Cored (Prism Wall Mount for Light Duty Only)

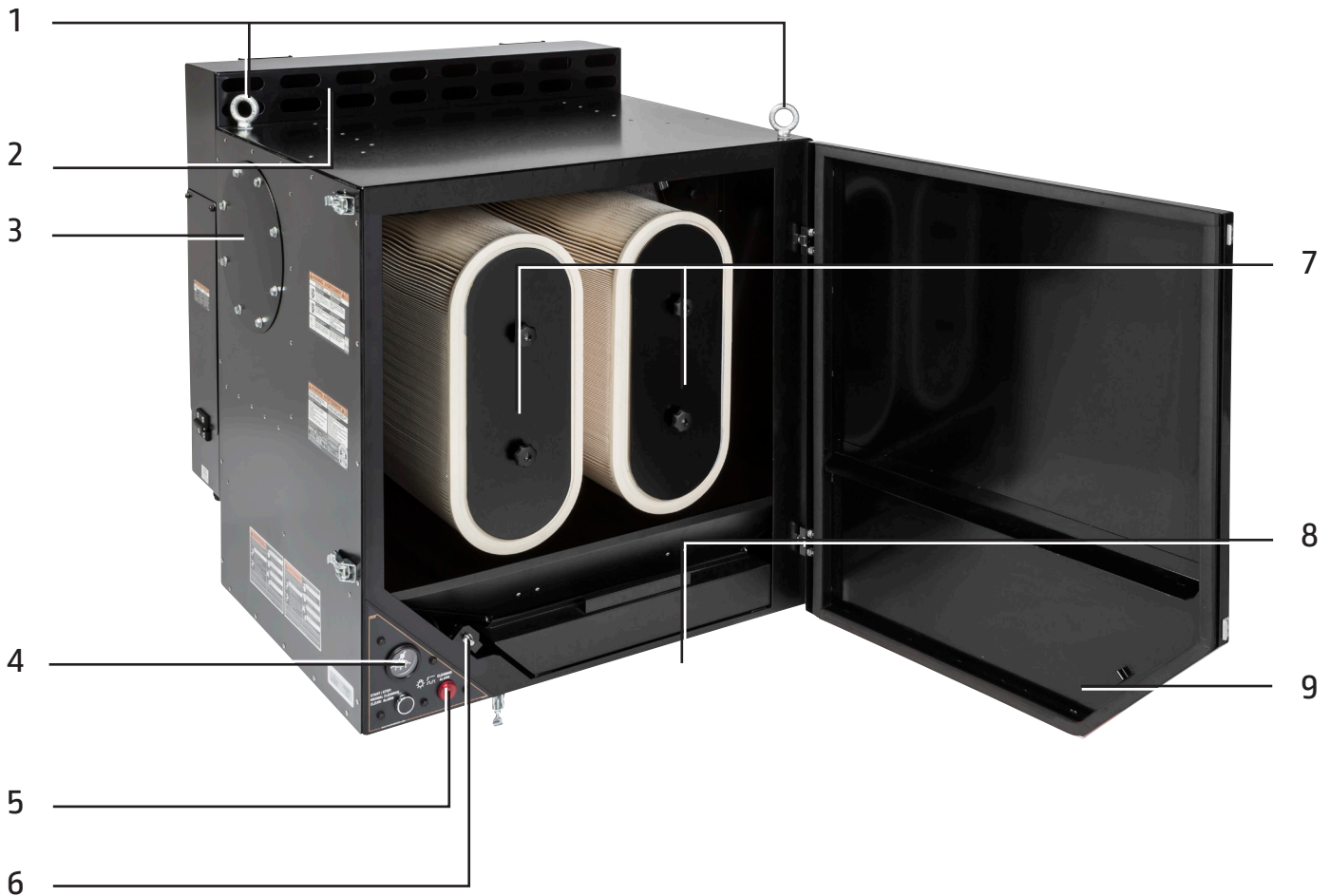
Product Number »

K1654-4 Prism Wall Mount w/ MERV 14 Filter Single Arm Base Unit
K1654-5 Prism Wall Mount w/ MERV 14 Filter Dual Arm Base Unit
K1654-6 Prism Wall Mount w/ MERV 16 Filter Single Arm Base Unit
K1654-9 Prism Wall Mount w/ MERV 16 Filter Dual Arm Base Unit
K3681-1 Prism Wall Mount with Mechanized Cleaning w/ MERV 16 Filter Single Arm Base Unit
K3681-2 Prism Wall Mount with Mechanized Cleaning w/ MERV 16 Filter Dual Arm Base Unit



PRISM WALL MOUNT WITH MECHANIZED CLEANING MODEL

1. Lifting Lugs
2. Built-in Exhaust Silencer
3. Integrated Pre-Filter Spark Arrestor
4. Differential Pressure Gauge — Alerts user when filter(s) need cleaned/replaced
5. Cleaning Cycle Indicator
6. Door Safety Switch — Disables cleaning cycle when door is opened
7. MERV 16 Self-cleaning, Front-loading Filters
8. Easily Removable Dust Tray
9. Tool-less / Key-less Filter Access Door



FILTER SELECTION

Filters are an integral part of a welding fume control system. The purpose of the filter is to capture and remove airborne particulates from the workplace environment. Welding fumes are comprised of complex metallic oxides, often along with silicates and fluoride compounds, forming particles that are typically less than 5 microns (μm) in diameter. Whether it is a single extraction unit like the X-Tractor® Mini, a large multi-arm central system, or a plant-wide general filtration system, filters play an important role.

Here are some key facts to remember:

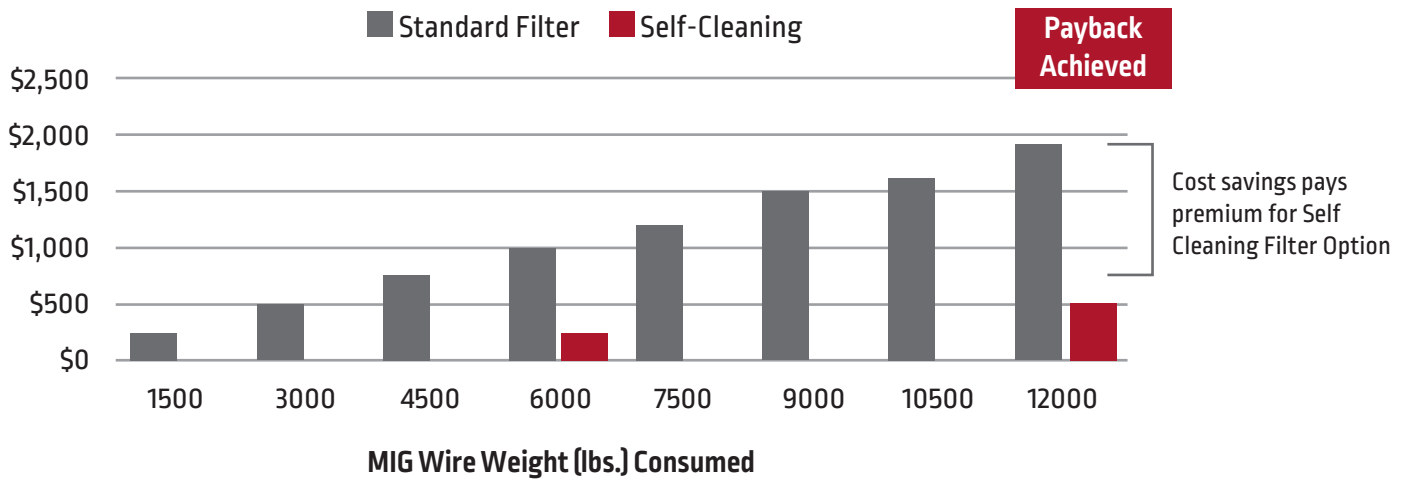
- The ability of a filter to remove particulate from the extracted welding or plasma cutting fume is expressed as its Minimum Efficiency Report Value or MERV.
- The MERV scale is 1 to 16.
- MERV is determined by testing the filter using ANSI/ASHRAE Standard 52.2-2017 "Method of Testing General Ventilation Air-Cleaning Devices for Removal Efficiency by Particle Size."
- Each MERV specifies an efficiency level for three particle size ranges.
- Filters with a HEPA designation (High Efficiency Particulate Air) have efficiency levels above MERV 16.
- Example MERV parameters (Composite Average Particle Size Efficiency, % in Size Range):

MERV	Range 1 (0.3 - 1.0 μm)	Range 2 (1.0 - 3.0 μm)	Range 3 (3.0 - 10.0 μm)
14	75 \leq E1	90 \leq E2	95 \leq E3
15	85 \leq E1	90 \leq E2	95 \leq E3
16	95 \leq E1	95 \leq E2	95 \leq E3

When the fume extraction system indicates it's time to replace the filter(s), do so in a timely manner to avoid degradation in extraction capacity. Make note of the spent filters' MERV when ordering replacements and use Lincoln Electric genuine filters for optimal system performance.

Filter Life & Cost Comparison

Standard Filter VS. Self-Cleaning



Based on MERV-14 Rating and prices effective July 2023

HOW TO BUILD YOUR COMPLETE PRISM WALL MOUNT SYSTEM

To order your customized Prism Wall Mount or Prism Wall Mount with Mechanized Cleaning unit, select at least one item from each of the **5 steps** below, or choose one of our One-Pak® packages [see pages 7-9] that include everything you need to get up and running.

STEP 1:

CHOOSE THE DESIRED BASE UNIT

Choose the desired base unit product number based on three of the features listed below. The base unit comes standard with a complete filter unit, connection hose(s), hose clamps, and mounting bracket.

FEATURES AVAILABLE:

- 1) Disposable or Mechanized Cleaning
- 2) Single or Dual Arms
- 3) Filter MERV Rating - 14 or 16



	Prism Wall Mount Base Unit - Disposable Filter (available in single arm and dual arm configurations)	Prism Wall Mount Base Unit - Mechanized Cleaning (available in single arm and dual arm configurations)
Filter	Disposable	Automatic Filter Cleaning
Single Arm	MERV 14 (K1654-4) MERV 16 (K1654-6)	MERV 16 (K3681-1)
Dual Arm	MERV 14 (K1654-5) MERV 16 (K1654-9)	MERV 16 (K3681-2)

STEP 2:

CHOOSE THE DESIRED EXTRACTION ARM(S)

Choose the desired extraction arm(s) product number based on the arm types listed below. One (Qty. 1) arm is required for a single arm base unit. Two (Qty. 2) arms are required for dual arm base unit - Arms can be mixed and matched if desired.

AVAILABLE ARM TYPES:

TELESCOPIC ARM – Has the ability to move in and out of the normal position

FLEXIBLE ARM – The arm is set at a set length

See Figure 1 and Figure 2 below for arm reach distances



	Telescopic 4-6 ft Counter-Weight Extraction Arm	Telescopic 5-8 ft Counter-Weight Extraction Arm	Flexible 10 ft Extraction Arm	Flexible 13 ft Extraction Arm
Length ft (m)	4.1 - 6 (1.25 - 1.8)	5.0-8.2 (1.5-2.5)	10 (3.0)	13 (4.0)
Net Wt. lb (kg)	57 (25.8)	59.2 (27)	33 (15)	37.5 (17)
Product Number	K1655-15	K1655-14	K1655-8	K1655-9

FIG 1. Wall Mount Telescopic Arm Reach

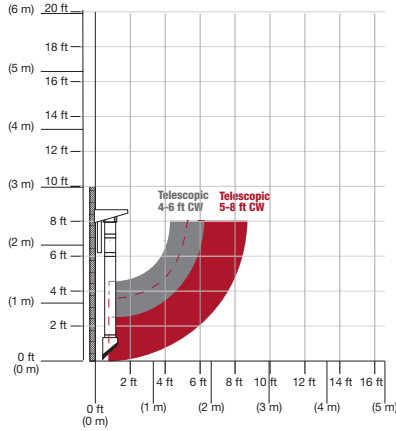
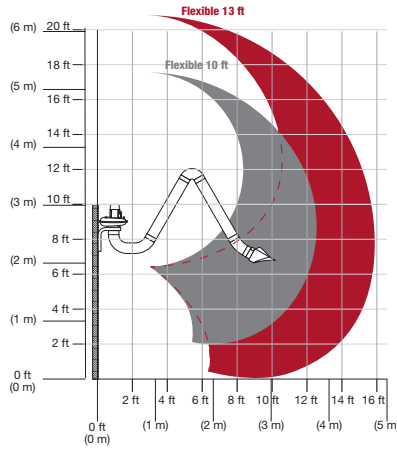


FIG 2. Wall Mount Flexible Arm Reach



STEP 3:

CHOOSE AN EXTRACTION ARM EXTENSION CRANE (IF EXTRA REACH IS REQUIRED.)

If a flexible arm is desired, an optional extension crane is available, which can add an additional 7 ft. or 14 ft to the flexible arm length. One (Qty. 1) extension crane is require for each arm.

EXTENSION CRANE (for large work areas that require an extended reach of 7 ft. or 14 ft.) »

Once you select an Extension Crane, you will automatically need to select the Prism 4200 Fan [K1656-4].



	Extension Crane Length: ft (m)	
	7.0 (2.0)	14.0 (4.0)
Extension Crane Product Number	K1671-1	K1671-2

STEP 4:

CHOOSE THE APPROPRIATE FAN

Choose the appropriate fan product number based on the input voltage, or if you choose an extension crane is step 3 (which requires a Prism 2400 fan)



Prism 2400 Stationary Fan

K1656-9 [115V, 1 Phase, 60Hz]
K2497-13 [230V, 1 Phase, 50Hz]

1HP, fan has self-cleaning concave blades and provides an unrestricted air flow of 1200 CFM.



Prism 4200 Stationary Fan

K1656-4 [230V, 3 Phase, 60Hz]

2HP, fan has self-cleaning concave blades and provides an unrestricted air flow of 1750 CFM

Dual arm Prism 4200 Application for Prism Wall Mount with Mechanized Cleaning only

**Required when adding an Extension Crane*

STEP 5:

CHOOSE THE CORRECT STARTING CONTROL(S)*

Choose the Arc Sensor / Lamp Kit Controls if you would like Arc Sensing, if not chose the Starter/Overload Switch. One (Qty. 1) control option required for single arm base unit. Two (Qty. 2) control options required for dual arm base unit.

**Starting Control Options: Select Arc Sensor/Lamp Kit - OR - Starter/Overload Switch.*

ARC SENSOR/LAMP KIT »

Turns the fan on when the arc flash is sensed. Hood mounted lamp/fan switch allows for easy manual light/fan operation.



Arc Sensor/Lamp Kit		
Volts	Prism 2400 Fan (1 HP)	Prism 4200 Fan (2 HP)
115V	K1669-4	NA
230V	K1669-4 / K1750-1	K1669-10*

OR

STARTER/OVERLOAD SWITCH »

Provides simple on/off operation when an Arc Sensor/Lamp Kit is NOT used.



Starter/Overload Switch		
Volts	Prism 2400 Fan (1 HP)	Prism 4200 Fan (2 HP)
115V	K1494-2	NA
230V	K1494-3**	K1494-10*
460V	NA	K1494-13*

* K1494-10 and K1494-13 for 3 phase only

** K1494-3 for Prism 2400 Stationary Fan 230V, 50Hz

OUR ONE-PAK PACKAGES HELP SIMPLIFY THE SELECTION PROCESS.

Choose from a range of options where the components have been carefully selected and bundled together. Simply order one product number for a complete system.

Prism Wall Mount

Description	Product Number	Prism Wall Mount with MERV 14 filter Base Unit		Arm Size/Type				Arc Sensor/Lamp Kit [K1669-4]	Starter Overload Switch [K1494-2]	Prism 2400 Stationary Fan [K1656-9]
		Single Arm [K1654-4]	Dual Arm [K1654-5]	Flexible 10 ft [K1655-8]	Flexible 13 ft [K1655-9]	Telescopic 4-6 ft Counter-Weight [K1655-15]	Telescopic 5-8 ft Counter-Weight [K1655-14]			
Single-Arm Prism Wall Mount with MERV 14 Filter										
w/ Flexible, 10 ft Single Arm One-Pak®	K4261-2
w/ Flexible, 10 ft Single Arm and Arc Sensor/Lamp Kit One-Pak	K4261-6
w/ Flexible, 13 ft Single Arm One-Pak	K4261-3
w/ Flexible, 13 ft Single Arm and Arc Sensor/ Lamp Kit One-Pak	K4261-14
w/ Telescopic 4 - 6 ft Counter-Weight Single Arm One-Pak	K4261-15
w/ Telescopic 4 - 6 ft Counter-Weight Single Arm and Arc Sensor/Lamp Kit One-Pak	K4261-16
w/ Telescopic 5-8 ft Single Arm One Pak	K4261-5
w/ Telescopic 5-8 ft Counter-Weight Single Arm and Arc Sensor/ Lamp Kit One-Pak	K4261-17
Dual-Arm Prism Wall Mount with MERV 14 Filter										
w/ Flexible, 10 ft Dual Arm One-Pak	K4261-8	
w/ Flexible, 10 ft Dual Arm and Arc Sensor/Lamp Kit One-Pak	K4261-12	
w/ Flexible, 13 ft Dual Arm One-Pak	K4261-9	
w/ Flexible, 13 ft Dual Arm and Arc Sensor/ Lamp Kit One-Pak	K4261-18	
w/ Telescopic 4 - 6 ft Counter-Weight Dual Arm One-Pak	K4261-19	
w/ Telescopic 4 - 6 ft Counter-Weight Dual Arm and Arc Sensor/ Lamp Kit One-Pak	K4261-20	
w/ Telescopic 5 - 8 ft Counter-Weight Dual Arm One-Pak	K4261-11	
w/ Telescopic 5-8 ft Counter-Weight Dual Arm and Arc Sensor/Lamp Kit One-Pak	K4261-21	

Prism Wall Mount with Mechanized Cleaning

Description	Product Number	Prism Wall Mount with Mechanized Cleaning with MERV 16 Filter Base Unit		Arm Size/Type			Arc Sensor/ Lamp Kit Prism 2400 115V [K1669-4]	Starter Overload Switch Prism 2400 115V [K1494-2]	Prism 2400 Stationary Fan [K1656-9]
		Single Arm [K3681-1]	Dual Arm [K3681-2]	Flexible 10 ft [K1655-8]	Flexible 13 ft [K1655-9]	Telescopic 5-8 ft [K1655-14]			

Single-Arm Prism Wall Mount with Mechanized Cleaning with MERV 16 Filter

w/ Flexible, 10 ft Single Arm One-Pak	K4468-1	•		•				•	•
w/ Flexible, 10 ft Single Arm and Arc Sensor / Lamp Kit One-Pak	K4468-5	•		•			•		•
w/ Flexible, 13 ft Single Arm One-Pak	K4468-8	•			•			•	•
w/ Flexible, 13 ft Single Arm and Arc Sensor/ Lamp Kit One-Pak	K4468-18	•			•		•		•
w/ Telescopic 5 - 8 ft Counter-Weight Single Arm One-Pak	K4468-13	•				•		•	•
w/ Telescopic 5 - 8 ft Counter-Weight Single Arm and Arc Sensor / Lamp Kit One-Pak	K4468-15	•				•	•		•

Dual-Arm Prism Wall Mount with Mechanized Cleaning with MERV 16 Filter

w/ Flexible, 10 ft Dual Arm One-Pak	K4468-17		•	••				••	••
w/ Flexible, 10 ft Dual Arm and Arc Sensor / Lamp Kit One-Pak	K4468-7		•	••			••		••
w/ Flexible, 13 ft Dual Arm One-Pak	K4468-11		•		••			••	••
w/ Flexible, 13 ft Dual Arm and Arc Sensor/ Lamp Kit One-Pak	K4468-19		•		••		••		••
w/ Telescopic 5 - 8 ft Counter-Weight Dual Arm One-Pak	K4468-14		•			••		••	••
w/ Telescopic 5 - 8 ft Counter-Weight Dual Arm and Arc Sensor / Lamp Kit One-Pak	K4468-16		•			••	••		••

• Included •• 2 included



Shown: K4468-1 One-Pak Package



Shown: K4468-8 One-Pak Package

Prism Wall Mount with Mechanized Cleaning

Description	Product Number	Prism Wall Mount with Mechanized Cleaning with MERV 16 Filter Base Unit		Arm Size/Type		Extension Crane, 7 ft [K1671-1]	Extension Crane, 14 ft [K1671-2]	Arc Sensor/Lamp Kit Prism 4200 230V/3PH [K1669-10]	Starter Overload Switch Prism 4200 230V/3PH [K1494-10]	Prism 4200 Fan 230V/3PH [K1656-4]
		Single Arm [K3681-1]	Dual Arm [K3681-2]	Flexible 10 ft [K1655-8]	Flexible 13 ft [K1655-9]					

Single-Arm Prism Wall Mount with Mechanized Cleaning with MERV 16 Filter

w/ Flexible, 10 ft, EC, 7 ft	K4468-2	•		•		•			•	•
w/ Flexible, 10 ft, EC, 14 ft	K4468-3	•		•			•		•	•
w/ Flexible, 10 ft, EC, 7 ft and Arc Sensor/Lamp Kit	K4468-6	•		•		•		•		•
w/ Flexible, 13 ft, EC, 7 ft	K4468-9	•			•	•			•	•
w/ Flexible, 13 ft, EC, 14 ft	K4468-10	•			•		•		•	•

Dual-Arm Prism Wall Mount with Mechanized Cleaning with MERV 16 Filter

w/ Flexible, 10 ft, EC, 7 ft Dual Arm One-Pak	K4468-4		•	••		••			••	••
w/ Flexible, 13 ft, EC, 14 ft Dual Arm One-Pak	K4468-12		•		••		••		••	••

• Included •• 2 included



Shown: K4468-3 One-Pak Package



Shown: K4468-9 One-Pak Package

PRODUCT SPECIFICATIONS

Product Name	Product Number	Filter Type	Filter Size ft ² (m ²)	Base Unit H x W x D, in (mm)	Base Unit Net Wt., lb (kg)
Prism Wall Mount (MERV 14 Filter) Single Arm					
Base Unit Single Arm	K1654-4	MERV 14 Cellulose	538 (50)	36 x 32 x 28 (900 x 810 x 730)	90 (41)
w/ Flexible, 10 ft Single Arm One-Pak	K4261-2				—
w/ Flexible, 10 ft Single Arm and Arc Sensor/Lamp Kit One-Pak	K4261-6				—
w/ Flexible, 13 ft Single Arm One-Pak	K4261-3				—
w/ Flexible, 13 ft Single Arm and Arc Sensor/Lamp Kit One-Pak	K4261-14				—
w/ Telescopic 4-6 ft Counter-Weight Single Arm One-Pak	K4261-15				—
w/ Telescopic 4-6 ft Counter-Weight Single Arm and Arc Sensor/Lamp Kit One-Pak	K4261-16				—
w/ Telescopic 5-8 ft Counter-Weight Single Arm One-Pak	K4261-5				—
w/ Telescopic 5-8 ft Counter-Weight Single Arm and Arc Sensor/Lamp Kit One-Pak	K4261-17				—
Prism Wall Mount (MERV 14 Filter) Dual Arm					
Base Unit Dual Arm	K1654-5	MERV 14 Cellulose	538 (50)	36 x 32 x 28 (900 x 810 x 730)	102 (46)
w/ Flexible, 10 ft Dual Arm One-Pak	K4261-8				—
w/ Flexible, 10 ft Dual Arm and Arc Sensor/Lamp Kit One-Pak	K4261-12				—
w/ Flexible, 13 ft Dual Arm One-Pak	K4261-9				—
w/ Flexible, 13 ft Dual Arm and Arc Sensor/Lamp Kit One-Pak	K4261-18				—
w/ Telescopic 4-6 ft Counter-Weight Dual Arm One-Pak	K4261-19				—
w/ Telescopic 4-6 ft Counter-Weight Dual Arm and Arc Sensor/Lamp Kit One-Pak	K4261-20				—
w/ Telescopic 5-8 ft Counter-Weight Dual Arm One-Pak	K4261-11				—
w/ Telescopic 5-8 ft Counter-Weight Single Arm and Arc Sensor/Lamp Kit One-Pak	K4261-21				—
Prism Wall Mount (MERV 16 Filter) Single Arm					
Base Unit Single Arm	K1654-6	MERV 16 NANO Coated Cellulose	538 (50)	36 x 32 x 28 (900 x 810 x 730)	90 (41)
Prism Wall Mount (MERV 16 Filter) Dual Arm					
Base Unit Single Arm	K1654-9	MERV 16 NANO Coated Cellulose	538 (50)	36 x 32 x 28 (900 x 810 x 730)	102 (46)
Prism Wall Mount with Mechanized Cleaning (MERV 16 Filter) Single Arm					
Base Unit Single Arm	K3681-1	MERV 16 NANO Coated Cellulose	568 (52)	38 x 34 x 36 (970 x 860 x 910)	270 (122)
w/ Flexible, 10 ft Single Arm & Prism 2400 Fan One-Pak	K4468-1				—
w/ Flexible, 10 ft Single Arm w/ 7 ft. Ext Crane & Prism 4200 Fan One-Pak	K4468-2				—
w/ Flexible, 10 ft Single Arm w/ 14 ft. Ext Crane & Prism 4200 Fan One-Pak	K4468-3				—
w/ Flexible, 10 ft Single Arm w/ Arc Sensor & Prism 2400 Fan One-Pak	K4468-5				—
w/ Flexible, 10 ft Single Arm w/ Arc Sensor, 7 ft Ext Crane & Prism 4200 Fan One-Pak	K4468-6				—
w/ Flexible, 13 ft Single Arm & SF2400 Fan One-Pak	K4468-8				—
w/ Flexible, 13 ft Single Arm w/ 7 ft Ext Crane & Prism 4200 Fan One-Pak	K4468-9				—
w/ Flexible, 13 ft Single Arm w/ 14 ft Ext Crane & Prism 4200 Fan One-Pak	K4468-10				—
w/ Telescopic 5-8 ft Counter-Weight Single Arm & Prism 2400 Fan One-Pak	K4468-13				—
w/ Telescopic 5-8 ft Counter-Weight Single Arm w/Arc Sensor & Prism 2400 Fan One-Pak	K4468-15				—
Prism Wall Mount with Mechanized Cleaning (MERV 16 Filter) Dual Arm					
Base Unit Dual Arm	K3681-2	MERV 16 NANO Coated Cellulose	568 (52)	38 x 34 x 36 (970 x 860 x 910)	290 (131)
w/ Flexible, 10 ft Dual Arm w Arc Sensor & Prism 2400 Fan One-Pak	K4468-7				—
w/ Flexible, 10 ft Dual Arm One-Pak	K4468-17				—
w/ Flexible, 13 ft Dual Arm & Prism 2400 Fan One-Pak	K4468-11				—
w/ Telescopic 5-8 ft Counter-Weight Dual Arm & Prism 2400 Fan One-Pak	K4468-14				—
w/ Telescopic 5-8 ft Counter-Weight Dual Arm w/Arc Sensor & Prism 2400 Fan One-Pak	K4468-16				—
w/ Flexible, 10 ft Dual Arm w/ 7 ft Ext Crane & Prism 4200 Fan One-Pak	K4468-4				—
w/ Flexible, 13 ft Dual Arm w/ 14 ft Ext Crane & Prism 4200 Fan One-Pak	K4468-12				—

RECOMMENDED ACCESSORIES

GENERAL OPTIONS

Prism Wall Mount Telescopic Fume Extraction Arms

Order
K1655-14 for Telescopic 5-8 ft. Counter-Weight
K1655-15 for Telescopic 4-6 ft. Counter-Weight



Prism Wall Mount Flexible Fume Extraction Arms

Order
K1655-8 for Flexible 10 ft.
K1655-9 for Flexible 13 ft.



Prism 2400 Stationary Fan

Order
K1656-9 for 115V, 1 Phase, 60 Hz
K2497-13 for 230V, 1 Phase, 50 Hz



Prism 4200 Stationary Fan

For use with an extension crane.
 Input Power: 230V, 3 Phase, 60 Hz
Order
K1656-4



Prism 2400 Starter Overload Switch

Order
K1494-2 for 115V, 1 Phase, 60 Hz
K1494-3 for 230V, 1 Phase, 50 Hz



Prism 4200 Starter Overload Switch

Order
K1494-10 for 230V, 3 phase 60 Hz
K1494-13 for 460V, 3 phase 60 Hz



Arc Sensor/Lamp Kit

Order
K1669-4 for Prism 2400 Fan
K1669-10 for Prism 4200 Fan



230V Conversion Kit

Provides 230V operation of the Prism 2400 fan when using the Arc Sensor/Lamp Kit (K1669-4)
Order
K1750-1



Air Exhaust Silencer

Prism Wall Mount only
Order
K1534-2



Conversion Kit

For use to convert a Prism Wall Mount single arm system with an Prism 2400 Fan to a dual arm configuration. Two kits are required for conversion. Additional equipment required for conversion: Prism 2400 Fan and Fume Extraction Arm.

NOTE: Conversion kit for use with a Prism Wall Mount single arm system with a Prism 2400 Fan only. Single arm units using a Prism 4200 Fan connection cannot be converted to a dual arm system.

Order
K1743-3



Prism Wall Mount MERV 14 Cellulose Filter

Order
KP1673-1



Prism Wall Mount MERV 16 NANO Fiber Coated Cellulose Filter

Order
KP1673-9



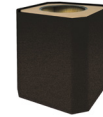
Prism Wall Mount HEPA Filter

Order
KP1673-11



Prism Wall Mount Pre-Filter

Order
KP1673-5



Prism Wall Mount Carbon Filter

Fits over KP1673-1 or KP1673-9
Order
KP1852-1



Prism Wall Mount with Mechanized Cleaning MERV 16 (HE) NANO Fiber Coated Cellulose Filter

Order
KP2752-16



Prism Wall Mount with Mechanized Cleaning Pre-Filter

Order
KP1673-6

The operation of welding fume control equipment is affected by various factors including proper use and positioning of the equipment, maintenance of the equipment and the specific welding procedure and application involved. Worker exposure level should be checked upon installation and periodically thereafter to be certain it is within applicable OSHA PEL and ACGIH TLV limits.

Lincoln Electric Product Claim - Weld fume control products manufactured by The Lincoln Electric Company are designed to be utilized as an engineering safety control to aide in achieving adequate ventilation while conducting welding or it's allied processes. The operation of welding fume control equipment is affected by various factors including proper use and positioning of the equipment, and the specific welding procedure and application involved. When the equipment is used as designed - and when properly installed, operated and maintained - it can be a valuable and effective tool to help employers maintain adequate ventilation in the workplace. Lincoln Electric defines adequate ventilation as that which is required to maintain occupational exposure levels below the applicable exposure limits when sound work practices are utilized. Worker exposure level should be checked upon installation and periodically thereafter to be certain it is within applicable OSHA PEL and ACGIH TLV limits.

Lincoln Electric weld fume control products are highly effective at decreasing the occurrence level of thermal events, however, thermal events can still happen even if the system is operating as designed.

CUSTOMER ASSISTANCE POLICY

The business of The Lincoln Electric Company® is manufacturing and selling high quality welding equipment, consumables, and cutting equipment. Our challenge is to meet the needs of our customers and to exceed their expectations. On occasion, purchasers may ask Lincoln Electric for information or advice about their use of our products. Our employees respond to inquiries to the best of their ability based on information provided to them by the customers and the knowledge they may have concerning the application. Our employees, however, are not in a position to verify the information provided or to evaluate the engineering requirements for the particular weldment. Accordingly, Lincoln Electric does not warrant or guarantee or assume any liability with respect to such information or advice. Moreover, the provision of such information or advice does not create, expand, or alter any warranty on our products. Any express or implied warranty that might arise from the information or advice, including any implied warranty of merchantability or any warranty of fitness for any customers' particular purpose is specifically disclaimed.

Lincoln Electric is a responsive manufacturer, but the selection and use of specific products sold by Lincoln Electric is solely within the control of, and remains the sole responsibility of the customer. Many variables beyond the control of Lincoln Electric affect the results obtained in applying these types of fabrication methods and service requirements.

Subject to Change – This information is accurate to the best of our knowledge at the time of printing. Please refer to www.lincolnelectric.com for any updated information.

The Lincoln Electric Company
 22801 St. Clair Avenue · Cleveland, OH · 44117-1199 · U.S.A.

www.lincolnelectric.com