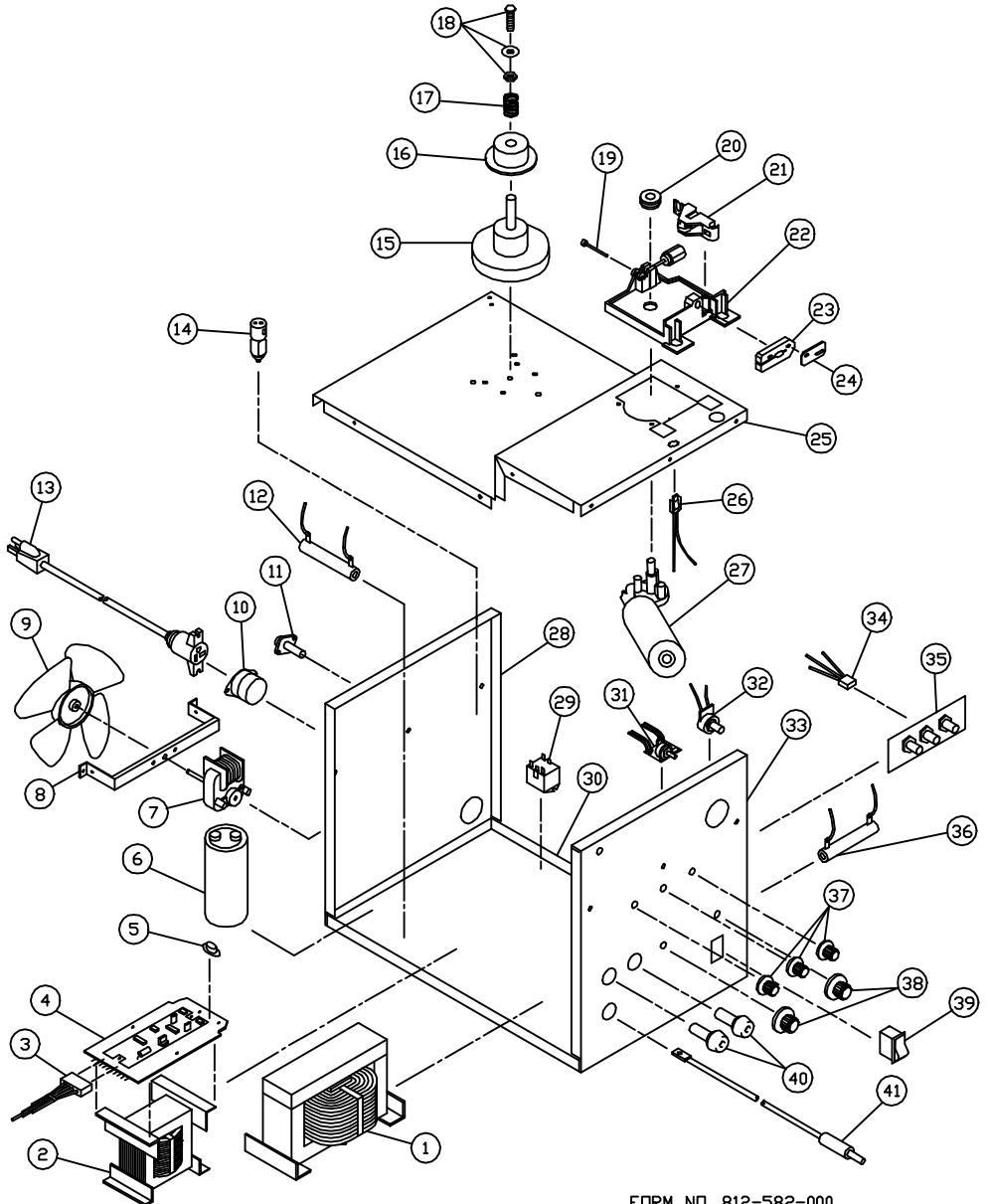


117-051, 2150, 3Z913E, 3Z913F, 83110, 83111, WFWMDP



117-051, 2150, 3Z913E, 3Z913F, 83110, 83111, WFWMDP 110 Amp Mig

Item	Lincoln Stock #	Customer #	Description
1	Repair	880-188-888	Main Transformer
2	NLA	880-215-888	Reactor coil
3		880-225-666	Wire harness
4	880-217-666	880-217-666	Main circuit board
5	216-053-666	216-053-666	Thermal protector
6	S13490-109	213-035-666	Capacitor
7	216-087-666	216-087-666	Fan motor
8	NLA	411-072-666	Fan bracket
9		316-009-666	Fan blade
10	S18414-1	239-159-666	AC receptacle
11		246-116-666	Fuse holder
		245-060-000	Fuse only, BAN30 or BLN30
12		860-523-666	Bleeder resistor
13	S18475	248-226-666	Power cord
		4040, 248-227-100	Power cord for 20A setting
14	216-086-666	246-212-666	Gas Solenoid
15	312-066-666	312-066-666	Bolt, spindle, spring, washer & wing nut
16	312-110-666	312-110-666	Spool adapter
17	Included in # 15	330-029-666	Spring
18	Included in # 15	081-055-666	Bolt w washer & nut
19		239-123-000, 239-208-000	Inlet guide tube
20	310-122-500	4323	0.024/0.030/0.035 drive roller
		4347, 310-154-000	0.045 serrated drive roller
21	Included in # 22	312-107-000	Tension arm only
22	880-130-666	880-130-666	Drive base assy. with arm
23	412-465-666	412-465-666	Gun connector block

Item	Lincoln Stock #	Customer #	Description
24		412-464-666	Copper jumper
25	NLA	410-651-010	Drive deck
26		880-227-666	Gun wire harness
27	216-079-666	216-079-666	Drive Motor w/gearbox
28	NLA	410-650-010	Back panel
29	246-258-666	246-258-666	Relay
30	NLA	410-648-666	Base
31	880-219-666	880-219-666	Wire speed control w/pcb
32		246-260-000 (245-108-666)	Potentiometer, 10K, 1/4 watt
33	NLA	410-649-030	Front panel
34		880-187-666	Spot stitch wire harness
35		880-214-666	Spot stitch PCB
36		880-218-666	Brake resistor
37		246-139-666	Knob, 1 3/16"
38		246-140-666	Knob, 1 1/2"
39	246-259-666	246-259-666	Rocker switch, 90/off/110
40	312-045-666	312-046-666	Receptacle assy.
41		248-320-666	Polarity jumper cable

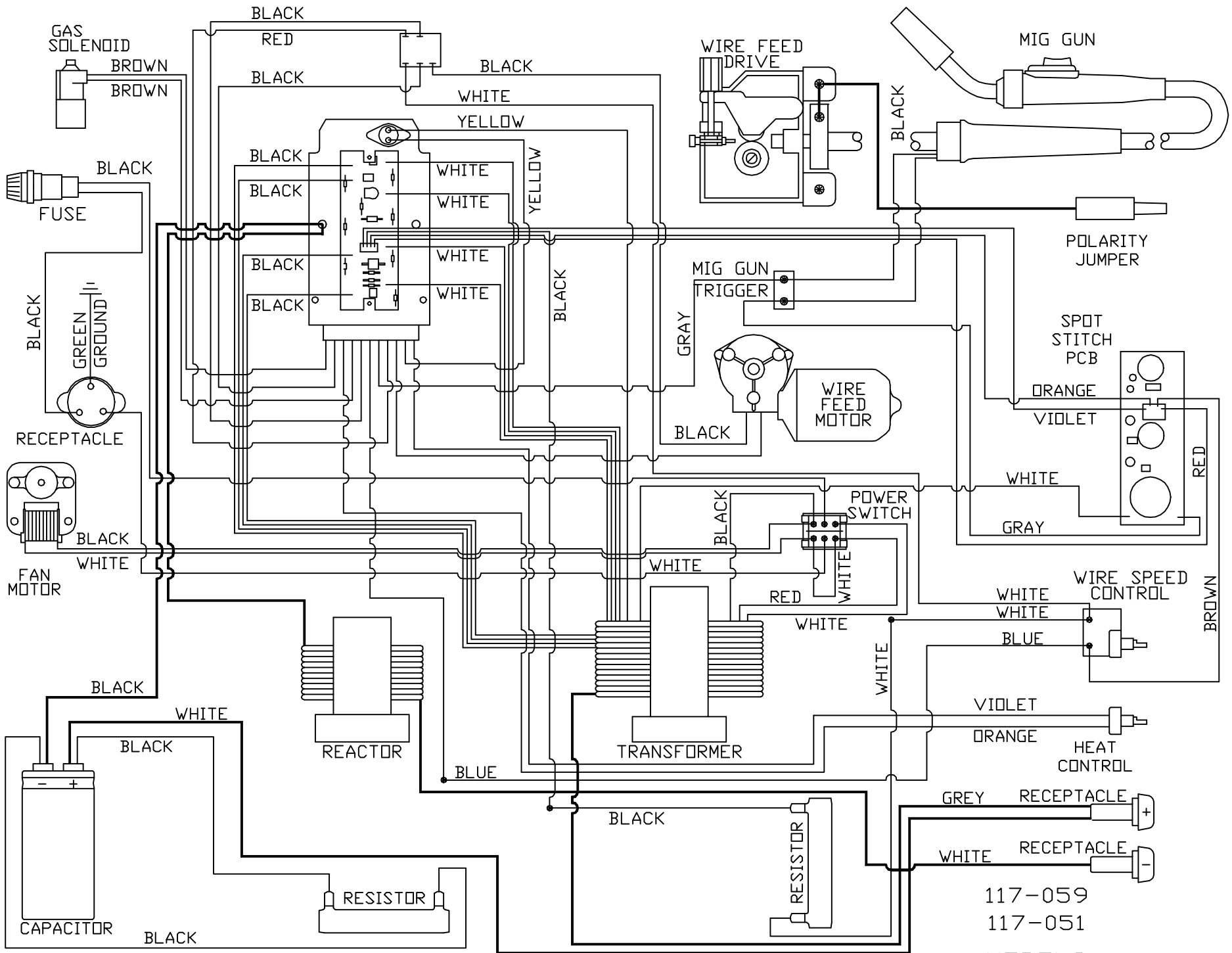
Not Shown

42		238-009-500	Ground cable w/plug & clamp, 12'
43	239-292-666	41001, 239-010-301	Ground clamp
44		246-103-666	Hood handle
45	238-155-000	4320	10' mig gun less tip & nozzle
46	334-303-001	334-286-666	Gas regulator
47	059-245-666		Gas hose

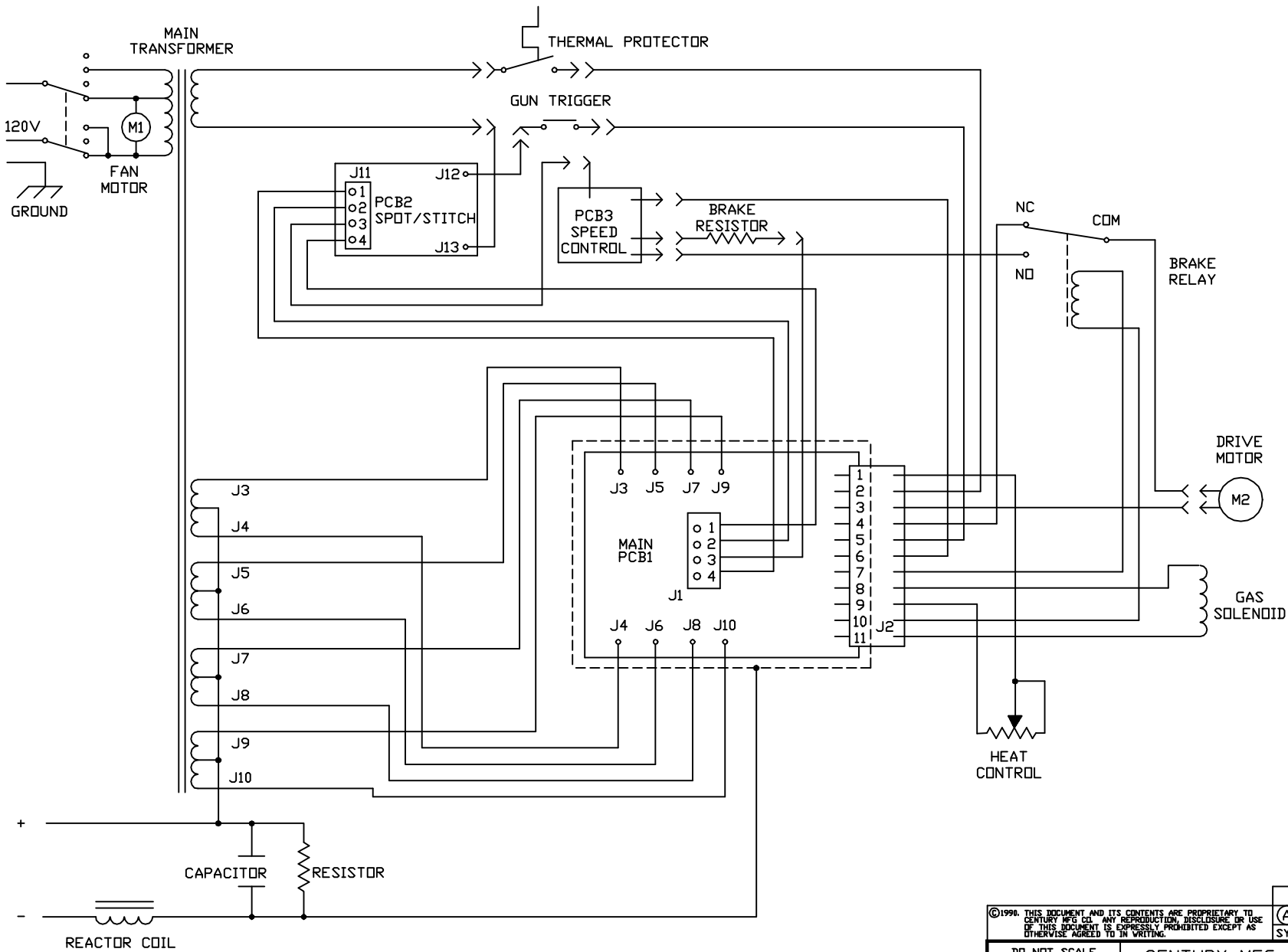
11/23/2009

Model	Primary Input	Input Plug	Duty Cycle at Rated Output
117-051	230V, 20a	50A	30%

Rated Output	Voltage Settings	Agency Listing	Max Output
90/110 a	Infinite	CSA	140 amps



117-059
 117-051
 MODELS

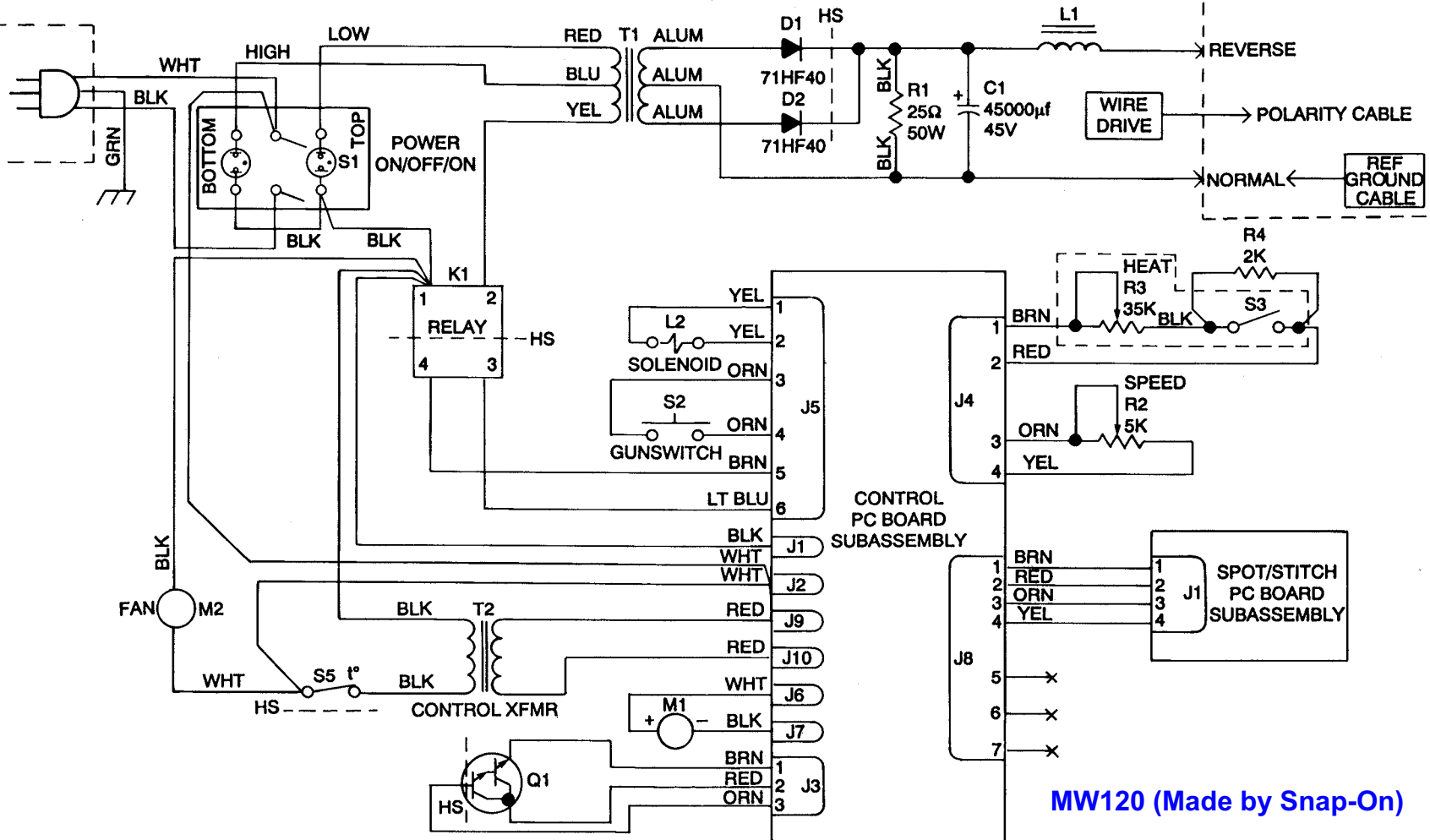


610-119-000

<small>©1990. THIS DOCUMENT AND ITS CONTENTS ARE PROPRIETARY TO CENTURY MFG CO. ANY REPRODUCTION, DISCLOSURE OR USE OF THIS DOCUMENT IS EXPRESSLY PROHIBITED EXCEPT AS OTHERWISE AGREED TO IN WRITING.</small>				(A)	EN 11093	8-23-90	KIM
		SYM	REVISION	DATE	BY		
DO NOT SCALE UNLESS SPECIFIED DIMENSIONS ARE IN INCHES		CENTURY MFG CO		9231 PENN AVE SD MPLS, MN 55431			
TOLERANCES UNLESS SPECIFIED		DWN BY	LRB	DATE	4-3-90	MAT'L	
DECIMALS: ±0.015		ENG CHK					
FRACTIONS: ±1/64		ENG APPV		JCW	4-10-90		
ANGLES: ±0.5°		PREVIOUSLY RELEASED AS		APPV	MAT'L NO		
P	REV	SCALE	1:1	RELEASE NO	10847	DATE ISSUED	DEPT CODE A
TITLE				SCHEMATIC		DWG NO 610-119-000	

117-059	(A)
117-051	
MODELS	

117-051, 2150, 3Z913E, 3Z913F, 83110, 83111, WFWMDP



MW120 (Made by Snap-On)

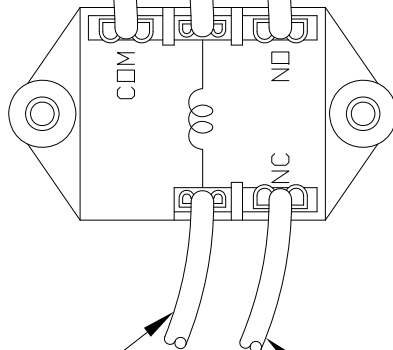
Black Lead to drive motor

Black lead from PCB

White lead from speed control

To bypass the wire feed relay, remove the NO and COM wires and connect them to each other away from the relay.

When the trigger is pulled, there should be 24Vdc between the two center wires (smaller terminals).



Black lead from PCB

Red lead from PCB