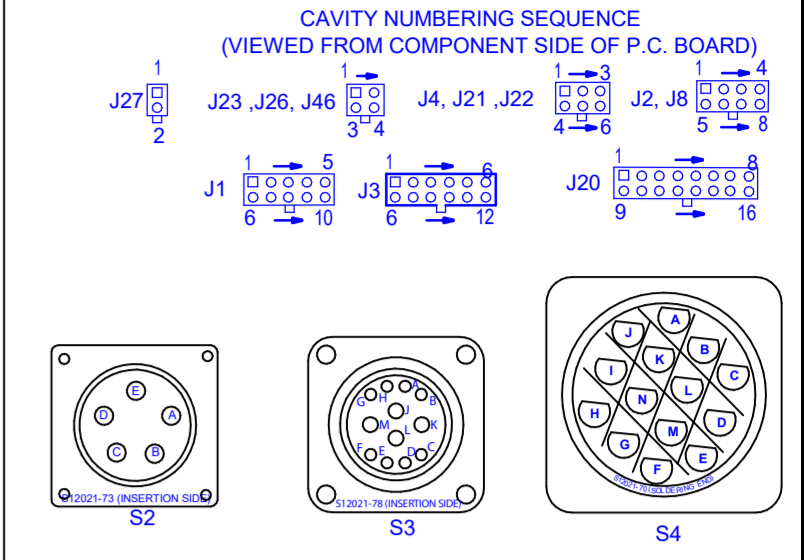
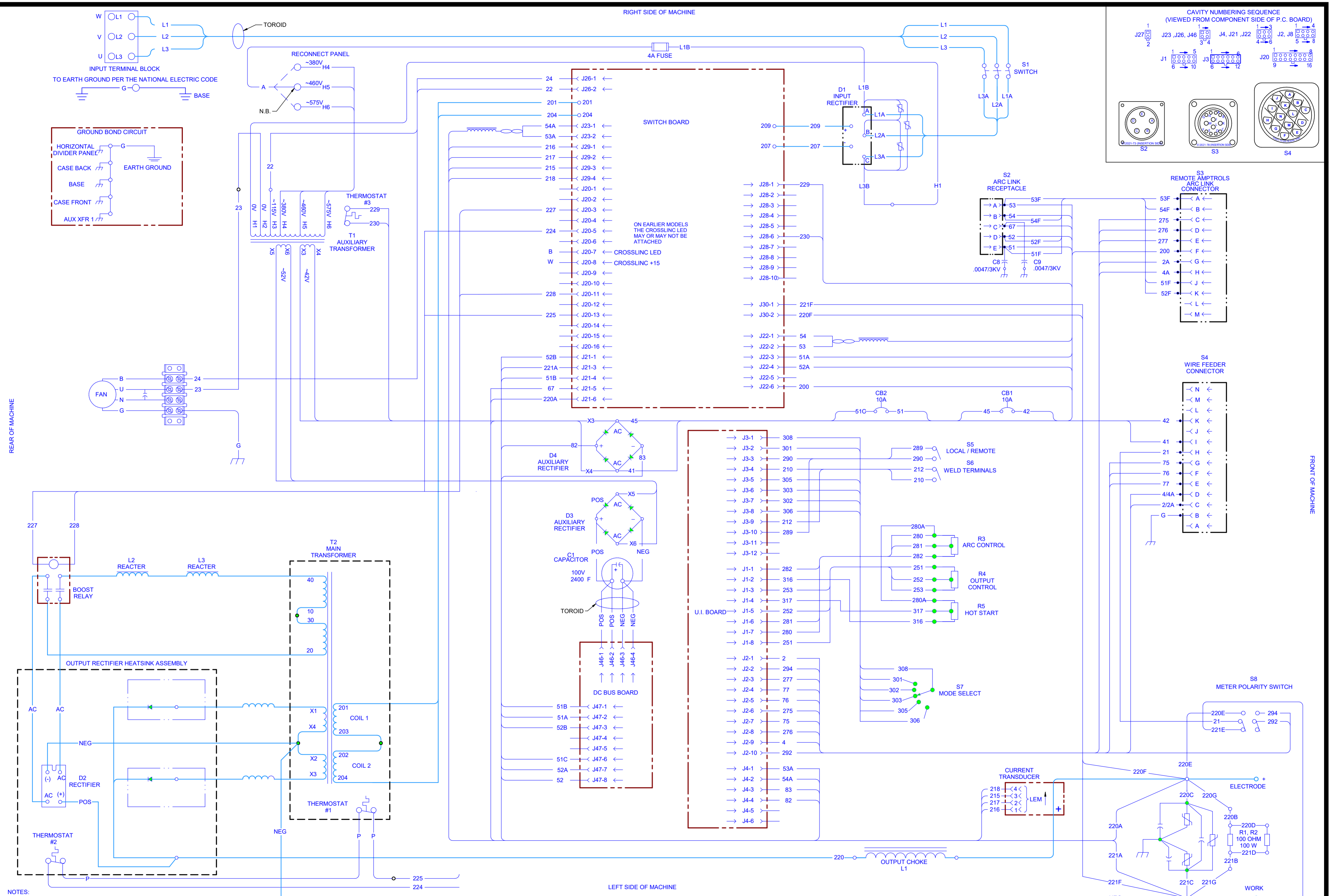


FLEXTEC 500 WIRING DIAGRAM G8035 REV: E



NOTES:
 N.A. PIN NEAREST THE FLAT EDGE OF LED LENS
 ALIGNS WITH WHITE LEAD OF LED SOCKET.
 N.B. PLACE "A" LEAD ON APPROPRIATE CONNECTION FOR INPUT
 VOLTAGE. CONNECTION SHOWN IS FOR 460 V OPERATION.
 N.C. LEDs ARE ONLY ACTIVE IF VRD IS TURNED ON. TURN ON VRD
 BY PLACING DIP SWITCH 5 ON CONTROL BOARD IN THE "ON" POSITION.

