

Service Notice N°: ESN0076 Rev.0

Date: 10 AUG 20

Flow sensor setup-rework instruction

Product	K Number	Code Number	Serial Numbers
Coolarc 26	K14182-1	50444	all serial numbers



WARNING

Be sure that only qualified individuals perform all installation, operation, maintenance and repair procedures. Lincoln Electric is not responsible for damages caused by improper installation, improper care or abnormal operation.

Before opening or disassembling any parts of the product, the power must be turned OFF and the product must be disconnected from the input power source. Only Lincoln trained service technicians are authorized to perform these modifications.

Explanation of the Problem

Error 0092 occurs during filling procedure on Coolarc 26 product. Issue may occur in following setup: Source + 30m interconnection cable + feeder + torch.

Verification of the Problem

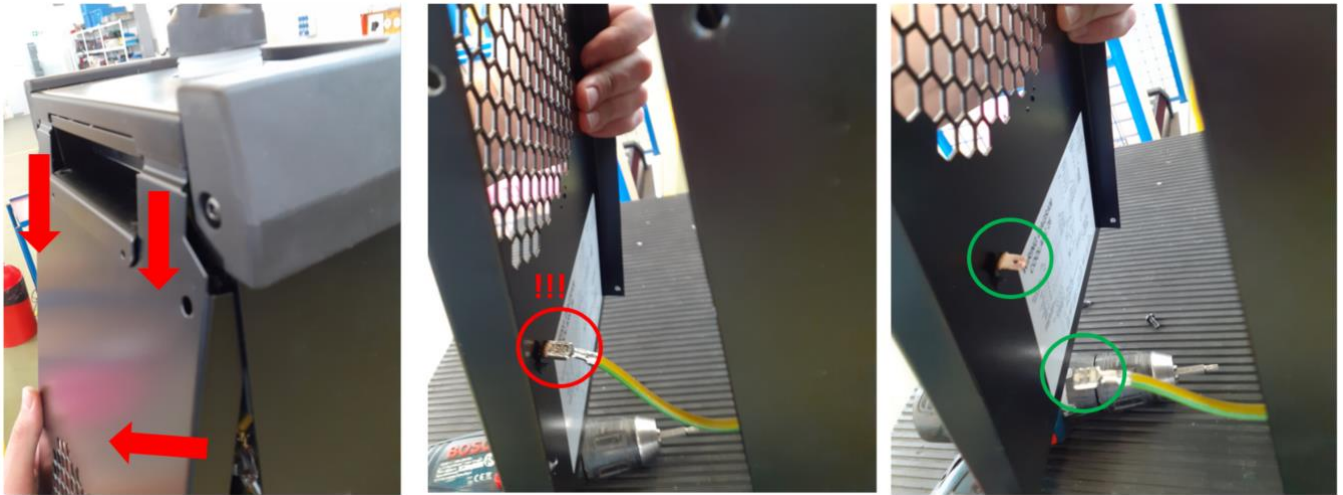
Problem can be solved by changing setup of flow sensor.

Correction of the Problem

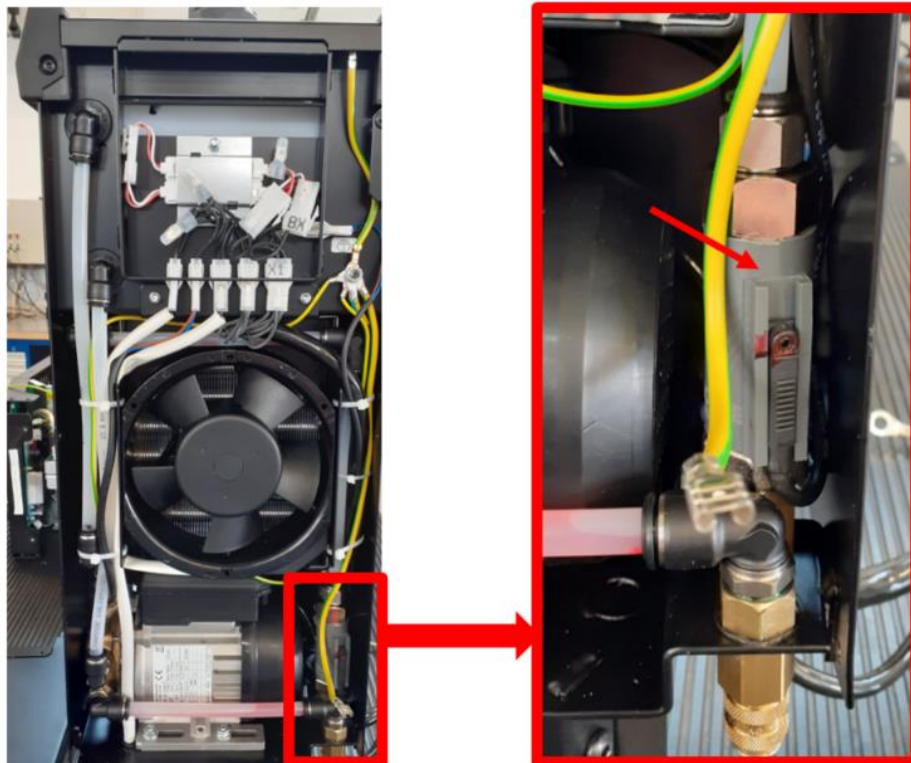
1. Unpack the product.
2. Unscrew 4 screws on left and right side of the cooler marked on below photos:



3. Slowly move back panel as it is shown in below photo and disconnect PE wire from the panel



4. Disassembled back panel with marked position of flow sensor:



5. Unscrew hex screw from flow sensor body



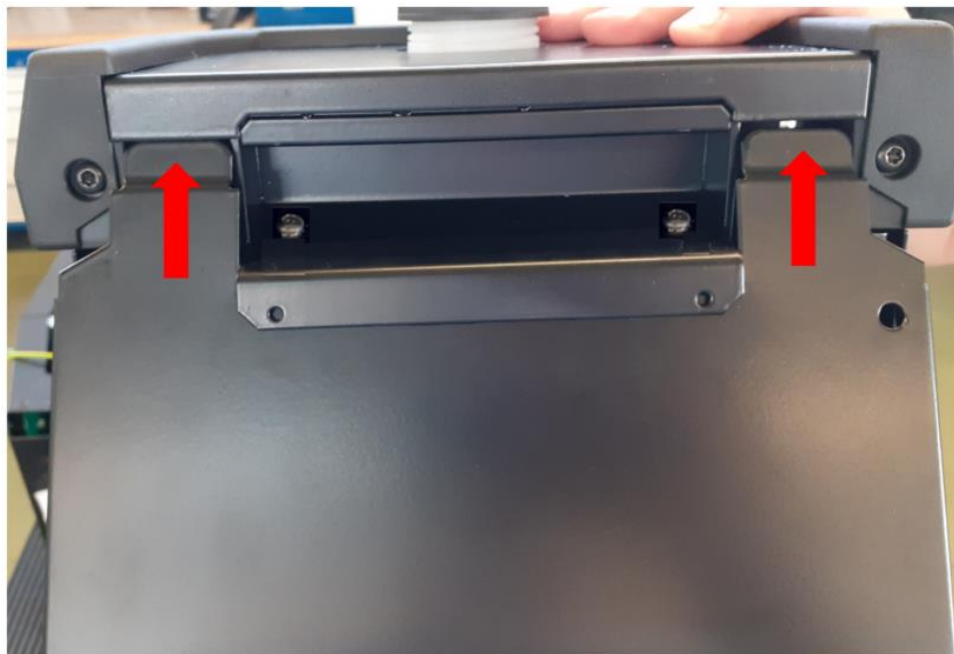
6. Setup flow sensor marker at the 26mm measured from bottom edge of flow sensor plastic body



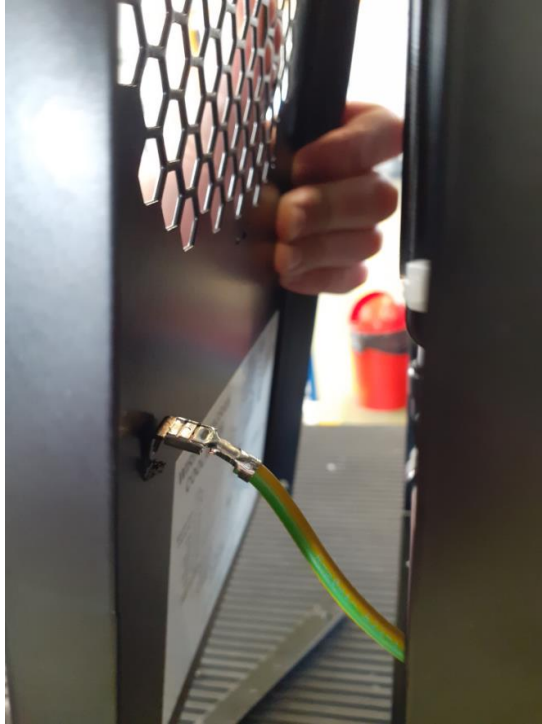
7. Tighten the hex screw of flow sensor and check that is not moving.



8. Assembly back panel:



9. Connect the PE wire to back panel



10. Assembly back panel by 4 screws which were shown in point 2.

11. Repeat filling procedure.